



# HHS Public Access

Author manuscript

*Behav Genet.* Author manuscript; available in PMC 2017 March 01.

Published in final edited form as:

*Behav Genet.* 2016 March ; 46(2): 151–169. doi:10.1007/s10519-015-9737-3.

## Association of the *OPRM1* variant rs1799971 (A118G) with non-specific liability to substance dependence in a collaborative *de novo* meta-analysis of European-ancestry cohorts

A full list of authors and affiliations appears at the end of the article.

### Abstract

The mu1 opioid receptor gene, *OPRM1*, has long been a high-priority candidate for human genetic studies of addiction. Because of its potential functional significance, the non-synonymous variant rs1799971 (A118G, Asn40Asp) in *OPRM1* has been extensively studied, yet its role in addiction has remained unclear, with conflicting association findings. To resolve the question of what effect, if any, rs1799971 has on substance dependence risk, we conducted collaborative meta-analyses of 25 datasets with over 28,000 European-ancestry subjects. We investigated non-specific risk for “general” substance dependence, comparing cases dependent on any substance to controls who were non-dependent on all assessed substances. We also examined five specific substance dependence diagnoses: DSM-IV alcohol, opioid, cannabis, and cocaine dependence, and nicotine dependence defined by the proxy of heavy/light smoking (cigarettes-per-day > 20 versus ≤ 10). The G allele showed a modest protective effect on general substance dependence (OR = 0.90, 95% C.I. [0.83–0.97], p-value = 0.0095, N = 16,908). We observed similar effects for each individual substance, although these were not statistically significant, likely because of reduced sample sizes. We conclude that rs1799971 contributes to mechanisms of addiction liability that are shared across different addictive substances. This project highlights the benefits of examining addictive behaviors collectively and the power of collaborative data sharing and meta-analyses.

---

\*Corresponding Author. Correspondence: Nancy L. Saccone, Ph.D., Department of Genetics, 4566 Scott Avenue, Campus Box 8232, Washington University School of Medicine, St. Louis, MO 63110 U.S.A., Phone: 314-747-3263, Fax: 314-747-2489, nlms@genetics.wustl.edu.

**Conflict of Interest Disclosures:** Dr. Bierut is listed as an inventor on Issued U.S. Patent 8,080,371, “Markers for Addiction” covering the used of certain SNPs in determining the diagnosis, prognosis, and treatment of addiction, and served as a consultant for Pfizer in 2008. Dr. NL Saccone is the spouse of Dr. SF Saccone, who is also listed as an inventor on the above patent. Dr. Cinciripini served on the scientific advisory board of Pfizer, conducted educational talks sponsored by Pfizer on smoking cessation (2006–2008), and has received grant support from Pfizer. Dr. Degenhardt has no relevant disclosures for this specific project; however, for general pharmaceutical company disclosures, Dr. Degenhardt has received untied educational grants from Reckitt Benckiser to conduct post-marketing surveillance of the diversion and injection of opioid substitution therapy medications in Australia. Although these activities are unrelated to the current study, Dr. Kranzler has been a consultant or advisory board member for Alkermes, Lilly, Lundbeck, Otsuka and Pfizer; he is also a member of the American Society of Clinical Psychopharmacology’s Alcohol Clinical Trials Initiative, which is supported by Ethypharm, Lilly, Lundbeck, AbbVie, and Pfizer. Dr. Ridinger is member of the advisory board of Lundbeck referring to Nalmefene. Prof. Dr. N. Scherbaum received honoraria for several activities (advisory boards, lectures, manuscripts and educational material) by the factories Sanofi-Aventis, Reckitt-Benckiser, Lundbeck, and Janssen-Cilag. During the last three years he participated in clinical trials financed by the pharmaceutical industry. The remaining authors declare no conflict of interest.

**Informed Consent.** The procedures followed were in accordance with the ethical standards of the responsible committee on human experimentation (institutional and national) and with the Helsinki Declaration of 1975, as revised in 2000 and 2008. All participants provided informed consent.

## Keywords

Addiction; substance dependence; *OPRM1*; opioid receptor; single nucleotide polymorphism (SNP); genetic association

---

## 1. INTRODUCTION

The mu opioid receptors are part of a family of G protein-coupled receptors that are expressed in the brain and bind endogenous and exogenous opioids. The mu1 opioid receptor gene (*OPRM1*) has been one of the most studied genes in psychoactive substance research. It is a receptor for opioid analgesic agents and is involved in reward and analgesic pathways (Kreek and Koob 1998). The non-synonymous single nucleotide polymorphism (SNP) rs1799971 (A118G) in exon 1 of *OPRM1* causes an asparagine to aspartic acid substitution at the fortieth amino acid residue (Asn40Asp). The G (Asp) allele is the minor allele across multiple human populations, with frequencies ranging from 4% in African-American samples to ~16% in European-ancestry samples to over 40% in some Asian samples ([http://www.ncbi.nlm.nih.gov/projects/SNP/snp\\_ref.cgi?rs=1799971](http://www.ncbi.nlm.nih.gov/projects/SNP/snp_ref.cgi?rs=1799971)). Multiple studies have examined the functional effects of this amino acid change on expression levels and receptor properties such as binding affinity and signaling (Befort et al. 2001; Beyer et al. 2004; Bond et al. 1998; Deb et al. 2010; Mague and Blendy 2010; Mague et al. 2009; Ray et al. 2012; Wang et al. 2014; Wang et al. 2012; Zhang et al. 2005).

Because of its potential functional significance, many human genetic studies of substance dependence have targeted rs1799971. However, the role, if any, of rs1799971 in substance dependence remains unclear (Crist and Berrettini 2013; Levran et al. 2012; Mague and Blendy 2010). In studies of opioid dependence, results have been mixed, with the minor (G) allele reported to have no effect in some studies (Crowley et al. 2003; Levran et al. 2008; Nelson et al. 2014; Nikolov et al. 2011) and to decrease risk in others (Bond et al. 1998; Tan et al. 2003). Similarly, analyses of alcohol dependence have reported increased risk (Bart et al. 2005; Kim et al. 2004), no effect (Bergen et al. 1997; Rouvinen-Lagerstrom et al. 2013; Sander et al. 1998; Xuei et al. 2007), and decreased risk (Schinka et al. 2002; Town et al. 1999) for this allele. Analyses of rs1799971 with other addictive substances also show no consensus (Clarke et al. 2013; Crist and Berrettini 2013; Franke et al. 2001; Gelernter et al. 1999; Hardin et al. 2009; Munafo et al. 2013).

Literature-based meta-analyses have evaluated the association of rs1799971 with substance dependence (Arias et al. 2006), opioid dependence (Coller et al. 2009; Glatt et al. 2007; Haerian and Haerian 2013), and alcohol dependence (Chen et al. 2012a). Three of these meta-analyses reported no association (Arias et al. 2006; Coller et al. 2009; Glatt et al. 2007), while among Asian samples the G allele was reported to increase risk for alcohol (Chen et al. 2012a) and opioid dependence (Haerian and Haerian 2013). Although these meta-analyses attained large samples by combining published information, they were subject to heterogeneity from multiple sources, including differing phenotypes, ascertainment schemes, and statistical analysis models across the meta-analyzed publications.

To clarify the effect of rs1799971 on substance dependence risk, we conducted collaborative meta-analyses based on new analyses of multiple datasets. Our data-driven approach moves beyond the limitations of literature-based meta-analyses by (1) defining consistent phenotypes across studies, (2) performing new, uniform analyses across datasets as in our previous meta-analyses (Chen et al. 2012b; Hartz et al. 2012; Saccone et al. 2010), and (3) inviting investigators to contribute analyses from established studies with relevant phenotype and genotype data, irrespective of prior publication on rs1799971.

## 2. METHODS

### 2.1. Samples and Study design

Twenty-five datasets contributed a starting sample of 28,689 study participants of European ancestry. Invitations to participate were sent to all studies in the NIDA Genetics Consortium, which NIDA formed to facilitate collaboration among investigators in addiction genetics, as documented by the NIDA Center for Genetic Studies (<https://nidagenetics.org/studies>). We extended invitations to additional studies suggested by consortium members as likely to have relevant data, and to collaborators on a previous meta-analysis of smoking quantity and lung disease (Saccone et al. 2010). NIDA further advertised the opportunity to participate in this meta-analysis project with a web announcement at <http://www.drugabuse.gov/researchers/research-resources/genetics-research-resources/collaborative-opportunities-genetics-research>. Dataset inclusion criteria were: (1) rs1799971 must have been genotyped, and (2) at least one of these five phenotypes must have been assessed: DSM-IV defined alcohol, cannabis, cocaine, or opioid dependence, or categorized cigarettes per day (CPD) (0–10, 11–20, 21–30, and 31+ CPD).

Study participants with a history of abstinence from alcohol (never drank) were excluded prior to all analyses, so that included participants satisfied a minimum exposure to alcohol. For the main analyses, we filtered out study participants if they had no known substance dependence and were also under the age of 25. Thus, we included non-dependent (control) participants only if they were old enough to have passed through the period of highest risk, so as to reduce phenotypic misclassification. For each dataset, Table 1 gives demographic characteristics, the allele frequency of rs1799971, and key publications. Supplementary text S1 provides additional details for each dataset, including study recruitment, genotyping methods, and data quality control.

### 2.2. Phenotypes

We analyzed six primary dichotomous phenotypes: a “general” substance dependence diagnosis (lifetime dependence on any of five substances: alcohol, nicotine, cannabis, cocaine, and opioids), plus the corresponding five individual substance-specific lifetime dependence diagnoses. General substance dependence controls were required to be non-dependent on all substances assessed in that dataset; not all studies assessed all five substances. For each substance, individuals who did not meet dependence criteria were classified as non-dependent; abuse criteria were not considered. These phenotypes allowed us to examine the general (nonspecific) liability to substance dependence and compare non-specific and substance-specific associations.

DSM-IV criteria were used to define dependent cases for alcohol, cannabis, cocaine, and opioids. For nicotine dependence, we defined the proxy of heavy smoking cases (CPD > 20) and light smoking controls (CPD = 10) for current and former smokers, based on CPD when they were smoking; if multiple measurements were available the maximum value was used. Heavy versus light CPD is more commonly measured than nicotine dependence and has been an informative proxy for nicotine dependence in large meta-analyses (Chen et al. 2012b; Hartz et al. 2012; Saccone et al. 2010); smokers meeting this threshold strongly overlap with nicotine dependent smokers. Because CPD does not account for dependence items such as withdrawal (Lessov et al. 2004), secondary analyses examined the effect of redefining general dependence using standard definitions of nicotine dependence (Fagerström Test for Nicotine Dependence (Heatherton et al. 1991) and DSM-IV), in the subset of studies for which these were available.

In addition to filtering out subjects who did not meet minimum exposure to alcohol, we also defined analysis variables for exposure to each of the other four substances. For cannabis, cocaine, and opioids, the exposure threshold was “at least one lifetime use.” For nicotine, we used “at least 100 cigarettes smoked lifetime,” a commonly used threshold to define smoking exposure in epidemiological studies.

Table 2 shows dataset-specific counts for cases, controls, and exposed controls. Individuals dependent on multiple substances are counted and analyzed in the corresponding multiple categories.

### 2.3. SNP for analysis

We required rs1799971 to be genotyped in each dataset. For analyses, we coded rs1799971 as the number of copies of the G (minor) allele.

### 2.4. Statistical analyses and meta-analysis

We conducted six correlated discovery tests corresponding to the six primary phenotypes: the general substance dependence diagnosis and the five specific substance dependence diagnoses. To limit the number of tests, we focused on testing for a main effect of rs1799971 on these outcomes. All discovery analyses filtered out study participants under the age of 25 with no known substance dependence to ensure that controls had passed the typical age of dependence onset; cases are dependent and thus have had sufficient exposure regardless of age. Additional interpretive tests examined the robustness and consistency of discovery test results, and included analyses without age filtering for comparison.

To ensure uniform analyses across datasets, the coordinating site at Washington University developed analysis scripts in SAS® and R. Scripts were distributed to collaborating sites, which then analyzed their datasets locally. Results were returned to the coordinating site for meta-analyses. We used standard inverse-variance-weighted meta-analysis as implemented in the *rmeta* package in R (Lumley; R Development Core Team 2012). Additionally, to be included in the meta-analysis of a given model, each dataset was required to have at least five cases and five controls available. This requirement was intended to reduce noise when some subgroups became very small after phenotypic filtering. All samples included for

general dependence in fact met a higher threshold of at least 20 cases and 20 controls. We report fixed effect estimates together with Cochran's  $Q$  and  $I^2$  to evaluate heterogeneity for each meta-analyzed model. No significant heterogeneity was observed among the studies analyzed ( $p$ -value for  $Q > 0.05$ , Table S1 and Tables 3 and 4). Correspondingly,  $Q$  values were close to the respective degrees of freedom (number of studies) and  $I^2$  values were small with no values greater than 26% (Supplementary Table S1).

## 2.5. General substance dependence analyses

Logistic regression was used to estimate the effect of rs1799971 on general substance dependence with covariates for sex and age. Of the 25 available datasets, 20 had at least five cases (dependent at least one of the five substances) and five controls (no known substance dependence diagnoses and exposed to alcohol) for analysis of general substance dependence.

Our interpretive tests examined the robustness of the general substance dependence results and compared them to substance-specific effects. Specifically, to assess the influence of each individual dataset, each of the 20 contributing datasets was, in turn, left out of the meta-analysis. In this leave-one-out test, observing consistency of summary odds ratios would suggest that it is unlikely that the overall meta-analysis result is primarily due to a single study. Also, we meta-analyzed only studies that had assessed all five substances to examine consistency of results; the general dependence controls in these studies were assessed for all five substances and thus more homogenous. Finally, to compare the effect of rs1799971 on general substance dependence liability with its effect on the constituent substance-specific diagnoses, we tested for association using individuals dependent on each specific substance as cases compared to the same controls used in the general dependence analysis (non-dependent on all assessed substances).

## 2.6. Specific substance dependence analyses

To test the association of rs1799971 with each specific dependence diagnoses while accounting for the remaining diagnoses, our primary analysis used ordinal logistic regression with additively coded rs1799971 as the dependent variable and the five dependence diagnoses, four exposures, sex, and age as explanatory variables. This model simultaneously estimates association of rs1799971 with each substance while accounting for co-morbidity (Gruca et al. 2008). This analysis used only the datasets that had all five substance dependence diagnoses and all four exposure variables because the model required that there be no missing variables.

To interpret and examine the robustness of these results, we evaluated traditional logistic regression models on the same datasets, also accounting for co-morbidity: each specific substance dependence was tested as the outcome, with log-additively coded rs1799971, age, sex, and the remaining specific substance dependence diagnoses as explanatory variables. Here, cases were dependent on a given substance, and controls were exposed but not dependent on that substance regardless of diagnoses for the remaining four substances. Additionally, to test equivalence of regression coefficients from ordinal regression analyses of individual substances, we conducted a two sample  $t$ -test assuming unequal variance.

To examine whether substance-specific results remained consistent with a larger number of datasets, we used all datasets that had assessed each substance for additional interpretive tests, with the dependence diagnosis as outcome and additively coded rs1799971, sex, and age as explanatory variables.

## 2.7. Multiple test correction

To estimate the effective number of independent tests corresponding to the six correlated discovery tests, we used matSpD [<http://gump.qimr.edu.au/general/daleN/matSpD/>], which accounts for correlations among phenotypes (Cheverud 2001; Li and Ji 2005; Nyholt 2004). Using Pearson correlations among the five dependence diagnoses from the studies with all five phenotypes assessed (see Table S3), plus one additional test for general substance dependence, we obtained a conservative estimate of 5.1218 independent tests, corresponding to a Bonferroni-corrected p-value threshold of  $\alpha' = 9.76 \times 10^{-3}$  for statistical significance.

## 3. RESULTS

### 3.1. The G (Asp) allele of rs1799971 shows a modest protective effect on general substance dependence

We observed a significant association between rs1799971 and general substance dependence (Figure 1). Based on 9064 cases and 7844 age-filtered controls from 20 datasets, the G allele showed a modest protective effect (OR = 0.90, 95% C.I. [0.83–0.97], p-value =  $9.52 \times 10^{-3}$ , N = 16,908); 15 of the 20 studies showed a protective direction of the G allele.

Heterogeneity variance was not statistically significant (Q=20.13, p-value = 0.39). A secondary analysis that did not require controls to be over 25 years old yielded a similar odds ratio (OR = 0.90, 95% C.I. (0.84–0.98), N = 17,918), but was not statistically significant after multiple correction in this larger sample (p-value =  $1.06 \times 10^{-2}$ ), consistent with our hypothesis that it is important for controls to be past the typical age of risk.

Leave-one-out test of robustness yielded odds ratio estimates ranging from 0.88 to 0.92, with none of the 20 iterations showing significant heterogeneity. This tight range of ORs centered on the overall odds ratio indicates that our finding was not driven by a single dataset. Only a few of the individual iterations showed significant association (e.g. 4 of 20 when using  $\alpha' = 9.76 \times 10^{-3}$  as the significance threshold), likely due to the reduced sample size.

To reduce potential heterogeneity among the general dependence controls, we meta-analyzed the 10 datasets that had all five substance-specific dependence diagnoses and at least 5 cases and 5 controls. For these 10 datasets (3947 cases and 2348 controls), the summary odds ratio was 0.87 (p-value = 0.01), very similar to the discovery result based on 20 studies.

Additionally, to aid interpretation, we compared the cases for each specific substance to the general dependence controls. We found that the G allele of rs1799971 was consistently protective (odds ratio of 0.83 to 0.93) across all five substances (Table 3), consistent with the interpretation that this allele is a non-substance-specific protective factor.

To further confirm robustness, we examined the effect of redefining general dependence using alternative definitions for nicotine dependence, namely the Fagerström Test for Nicotine Dependence (FTND) (case 4, control 1; 13 studies, N = 8,481) or DSM-IV nicotine dependence (14 studies, N = 11,711), in place of our CPD-based heavy/light phenotype (20 studies, N = 16,908). Analyses of these smaller samples gave similar protective odds ratios for general dependence, though results were not statistically significant: OR = 0.91, 95% C.I. (0.81–1.02) for FTND and OR = 0.94, 95% C.I. (0.85–1.03) for DSM-IV nicotine dependence.

### 3.2. For each substance-specific dependence, the G allele of rs1799971 is similarly protective but non-significant

In our primary test of rs1799971 genotype as the dependent variable on the 9 datasets that had assessed all five substance dependence diagnoses and exposures, we obtained odds ratios that ranged from 0.89 (nicotine dependence) to 0.92 (cocaine dependence). The odds ratio for each specific substance showed the same protective direction as that for general substance dependence, though none was statistically significant in these smaller samples (Table 4). Also, odds ratios for specific substances did not differ significantly from each other (Table S2), suggesting consistency across substances.

We also examined traditional logistic regression in these 9 datasets. Each substance dependence diagnosis was examined as the outcome (cases dependent on that substance and controls required to be non-dependent but exposed to that substance), with rs1799971 as the predictor and the remaining diagnoses as covariates. Results were similar to those from our ordinal logistic model (Table 4, bottom half). Finally, analyzing all available datasets for these same case/control outcomes (cases dependent on each specific substance, controls non-dependent and exposed to that substance) also showed protective, but non-significant, odds ratios consistent with those seen in the datasets that assessed all dependence diagnoses and exposures (Supplementary Figures S1–S5).

## 4. DISCUSSION

This project, the first collaborative genetic meta-analysis to investigate specific and general liability for these substance dependence diagnoses, has demonstrated that the G allele of rs1799971 has a modest protective effect on general substance dependence liability (OR = 0.90, 95% C.I. (0.83–0.97),  $p$ -value =  $9.52 \times 10^{-3}$ ) in samples of European ancestry. This is the first meta-analysis to show that this non-synonymous variant, which has been heavily studied for functional effects, is significantly associated in European ancestry samples with liability to substance dependence. The small but significant effect size of rs1799971 suggests that variability in previous association reports may be due in part to sampling variation. This collaborative meta-analysis benefited from the opportunity to define uniform phenotypes across studies, perform coordinated, *de novo* analyses to test our hypotheses, and include existing datasets that have not yet focused on the question of rs1799971 and addiction.

The protective effect of this allele on substance dependence liability appears to be non-specific: it is not driven primarily by dependence on any particular substance. For each

substance-specific subset of cases compared to the general dependence controls, we observed a protective effect of similar size to that observed for general dependence. Additional substance-specific analyses similarly showed consistent protective effects of the G allele. These substance-specific odds ratios were not statistically significant, but this may have been largely due to reduced sample size and power.

These findings indicate that rs1799971 in *OPRM1* may contribute to mechanisms of addiction liability that are shared across different addictive substances, consistent with the high genetic correlation between the traits, high co-morbidity, and with prior studies showing that both substance-specific and non-specific genetic effects on addiction liability can be expected (Bierut et al. 1998; Kendler et al. 2007; Merikangas et al. 1998; Swan et al. 1997; Tsuang et al. 1998; Vanyukov et al. 2012; Vanyukov et al. 2003). Rs1799971 is now one of the few examples of a genetic factor that demonstrates a similar, general effect across multiple substances, albeit of modest magnitude. In this sense, our study is similar to a genome-wide association study of multiple psychiatric disorders that identified variants having a common, cross-disorder genetic effect on five major psychiatric diseases (Cross-Disorder Group of the Psychiatric Genomics Consortium 2013). Both studies underscore the value of investigating the genetics of general liability underlying related diseases. Genetic studies of addiction would therefore benefit from including measures pertaining to multiple substances that can then be analyzed collectively. Indeed, a very recent genome-wide study of general substance dependence liability using four of the five substances studied here (alcohol, cannabis, cocaine, opioids) reported novel associations (Wetherill et al. 2015), further supporting the potential benefits.

Our results are compatible with negative results from prior genome-wide meta-analyses of cigarettes-per-day (Liu et al. 2010; The Tobacco and Genetics Consortium 2010; Thorgeirsson et al. 2010). Our hypothesis-driven analyses of a single SNP translate to a study-wide required significance threshold of  $9.76 \times 10^{-3}$ . This led to statistically significant evidence for a modest effect (OR=0.90) of rs1799971 on general substance dependence liability, in N=16,908 subjects (Table 3). The three genome-wide smoking consortia tested *OPRM1* only in each consortium separately (N=38,000, N=31,000, and N=16,000 smokers with cigarettes-per-day); estimated power to have detected the nicotine-specific odds ratio of 0.93 (Table 3) in at least one of the three consortia with genome-wide significance ( $\alpha=5 \times 10^{-8}$ ) is only 4%. Power details are in Supplementary Text S2. Hence it is not surprising that these smoking consortia did not report an *OPRM1* effect.

This study contributes valuable information to connect functional findings to the clinically important outcome of addiction in humans. Several neurobiological, functional, and physiological changes have been demonstrated for the rs1799971 (A118G) amino acid change and a corresponding mutation in a similar region of the receptor in mice (A112G) (Drakenberg et al. 2006; Huang et al. 2012; Mague and Blendy 2010; Palmer and de Wit 2012; Ray et al. 2012; Wang et al. 2014). *In vitro* studies of the G allele have reported increased binding to  $\beta$ -endorphin (Bond et al. 1998), altered downstream signaling (Deb et al. 2010), and decreased mu opioid receptor expression (Zhang et al. 2005). In human brain imaging, the G allele is associated with striatal dopamine response to alcohol (Ramchandani et al. 2011) and increased mu opioid receptor binding potential (Ray et al. 2011). In mouse



knock-in models (A112G), the G/G knock-in has shown reduced receptor protein levels overall and reduced reinforcing value of morphine in female mice (Mague et al. 2009), reduced G-protein signaling (Wang et al. 2014), and increased peak dopamine response to alcohol challenge (Ramchandani et al. 2011); changes are often brain-region specific.

It is important to note that some functional and neurobiological findings have been interpreted as indicating that the G allele of rs1799971 should increase risk for addiction, for example due to its association with greater alcohol-induced reinforcement and reward (Ramchandani et al. 2011; Ray and Hutchison 2004; Ray and Hutchison 2007; Ray et al. 2010). Our data-driven evidence of a modest *protective* effect of this allele on substance dependence liability is thus surprising and all the more important to integrate with functional findings to understand downstream contributions to human substance dependence. A protective effect of the G allele on addiction may be consistent with either increased or decreased reward/reinforcement, for example due to varying roles of positive versus negative reinforcement at different stages in the transition from use to dependence. Modeling these connections remains an open area to be worked out by neurobiological theories of addiction (Ray et al. 2012).

This project demonstrates the value of collaborative data sharing and meta-analysis, as the modest odds ratio of rs1799971 would be challenging to detect and consistently replicate in modestly sized candidate gene studies (Hall et al. 2013; Hart et al. 2013). Also important was our approach of defining consistent phenotypes across all datasets. In particular, careful definition of controls can help to detect associations (Nelson et al. 2013; Schinka et al. 2002). In our case, requiring controls to be at least 25 years of age led to stronger association results even with the reduced the number of controls.

This study has limitations. First, as in any meta-analysis, sample heterogeneity could not be completely avoided. Studies had diverse ascertainment schemes, with some designed to recruit dependent cases for one particular substance. Some studies recruited from the general population while others recruited potentially more extreme cases from treatment centers. Hence, over- and under-representation of phenotypes were present in contributing datasets, and the severity of dependence, degree of co-morbid dependence, and prevalence of substance exposure varied. Reduced proportions of exposed controls would reduce effective sample size and power for a study. But overall, uniform phenotype definitions were an important design feature to ameliorate effects of heterogeneity. Although some bias may have occurred, it seems unlikely to have been systematic in either direction. Similarly, it seems unlikely that systematic bias would have occurred due to differences between studies that contributed to this meta-analysis and those that declined to participate.

Second, this project interrogated only the non-synonymous variant rs1799971. As with any statistical association, our finding may reflect a proxy association for which the true functional variant(s) remain to be recognized. Other *OPRM1* variants have been associated with addiction and merit consideration for future study (Clarke et al. 2013; Hancock et al. 2015; Zhang et al. 2006a). Analyses of multiple SNPs and haplotypes will also be of future interest: recent evidence indicates an important role in heroin addiction for the haplotype structure of *OPRM1*, with the A allele of rs1799971 showing association only in the

presence of the C allele of rs3778150 (Hancock et al. 2015). Importantly, (Hancock et al. 2015) also found that the G allele of rs1799971 is protective (A allele confers risk) on that background, agreeing with the direction of effect observed in our meta-analysis of general substance dependence.

Third, further phenotypic refinement is possible. We did not consider substance abuse criteria, nor did we use the newer diagnostic system, DSM-5 (American Psychiatric Association 2013). Our threshold for exposure was a single use for all substances except nicotine; therefore, the genetic effect of rs1799971 detected by our analyses may involve a combination of effects on development of regular/repeated use and effects on dependence. We focused on dichotomous diagnoses for each substance. For nicotine, we examined heavy/light smoking as the most widely available nicotine trait in our datasets. Consistency of results was confirmed using DSM-IV and Fagerström Test of Nicotine Dependence criteria when available. Because we focused on dichotomous diagnoses that could then be combined into the general substance dependence diagnosis, we did not examine quantitative or categorical cigarettes-per-day.

Fourth, we focused on main effects of rs1799971 to limit multiple testing. Thus, we did not examine gene-environment interactions (e.g., sex-specific effects) or gene-gene interactions. We did adjust statistically for sex, which showed no evidence for a main effect on general substance dependence ( $p = 0.57$ ). Interactions likely have roles in a complex trait such as addiction, and could attenuate the genetic main effect when not accounted for (e.g. when the effect occurs only in a specific stratum). Thus, it is possible that the modest main effect that we detected could translate to a stronger effect if particular genetic or environmental backgrounds are considered. Future work could examine interactions nominated in the literature (Mague et al. 2009; Miranda et al. 2013; Ray et al. 2006).

Finally, a model that explicitly partitions the association between a general factor for any substance dependence and substance-specific components was not fitted to these data. Although such a model would allow a more refined distinction between general and specific associations (Medland and Neale 2010; Neale et al. 2006), we chose not to apply this because of the complexities of running and integrating such analyses across sites.

In closing, this data-driven, collaborative meta-analysis has demonstrated a modest protective effect of the G allele of rs1799971 on general liability to substance dependence. This work highlights the benefits of jointly studying related disorders: larger samples and insight into factors involved in underlying shared liability. An important strength of our approach is that the analyses of our datasets were designed and conducted in collaboration with the originating investigators. Thus, we benefited from collaborators' deep knowledge of their own data and our combined expertise on addiction. This effort underscores the value of collaboratively sharing data and expertise to accelerate discoveries.

## Supplementary Material

Refer to Web version on PubMed Central for supplementary material.

## Authors

Tae-Hwi Schwantes-An<sup>1,2</sup>, Juan Zhang<sup>1,70</sup>, Li-Shiun Chen<sup>3</sup>, Sarah M. Hartz<sup>3</sup>, Robert C. Culverhouse<sup>4</sup>, Xiangning Chen<sup>5</sup>, Hilary Coon<sup>6</sup>, Josef Frank<sup>7</sup>, Helen M. Kamens<sup>8,9,10</sup>, Bettina Konte<sup>11</sup>, Leena Kovanen<sup>12</sup>, Antti Latvala<sup>13</sup>, Lisa N. Legrand<sup>14</sup>, Brion S. Maher<sup>15</sup>, Whitney E. Melroy<sup>8,9</sup>, Elliot C. Nelson<sup>3</sup>, Mark W. Reid<sup>16</sup>, Jason D. Robinson<sup>17</sup>, Pei-Hong Shen<sup>18</sup>, Bao-Zhu Yang<sup>19</sup>, Judy A. Andrews<sup>16</sup>, Paul Aveyard<sup>20</sup>, Olga Beltcheva<sup>21</sup>, Sandra A. Brown<sup>22</sup>, Dale S. Cannon<sup>6</sup>, Sven Cichon<sup>23,24</sup>, Robin P. Corley<sup>8</sup>, Norbert Dahmen<sup>25</sup>, Louisa Degenhardt<sup>26,27</sup>, Tatiana Foroud<sup>28</sup>, Wolfgang Gaebel<sup>29</sup>, Ina Giegling<sup>11</sup>, Stephen J. Glatt<sup>30</sup>, Richard A. Grucza<sup>3</sup>, Jill Hardin<sup>31</sup>, Annette M. Hartmann<sup>11</sup>, Andrew C. Heath<sup>3</sup>, Stefan Herms<sup>23,24</sup>, Colin A. Hodgkinson<sup>18</sup>, Per Hoffmann<sup>23,24</sup>, Hyman Hops<sup>16</sup>, David Huizinga<sup>33</sup>, Marcus Ising<sup>34</sup>, Eric O. Johnson<sup>35</sup>, Elaine Johnstone<sup>36</sup>, Radka P. Kaneva<sup>21</sup>, Kenneth S. Kendler<sup>5</sup>, Falk Kiefer<sup>37</sup>, Henry R. Kranzler<sup>38</sup>, Ken S. Krauter<sup>8,39</sup>, Orna Levran<sup>40</sup>, Susanne Lucae<sup>34</sup>, Michael T. Lynskey<sup>41</sup>, Wolfgang Maier<sup>32</sup>, Karl Mann<sup>42</sup>, Nicholas G. Martin<sup>43</sup>, Manuel Mattheisen<sup>23,44,45</sup>, Grant W. Montgomery<sup>43</sup>, Bertram Müller-Myhsok<sup>34</sup>, Michael F. Murphy<sup>47</sup>, Michael C. Neale<sup>5</sup>, Momchil A. Nikolov<sup>3,21</sup>, Denise Nishita<sup>31</sup>, Markus M Nöthen<sup>23</sup>, John Nurnberger<sup>48</sup>, Timo Partonen<sup>12</sup>, Michele L. Pergadia<sup>3</sup>, Maureen Reynolds<sup>49</sup>, Monika Ridinger<sup>50,68</sup>, Richard J. Rose<sup>51</sup>, Noora Rouvinen-Lagerström<sup>12</sup>, Norbert Scherbaum<sup>52</sup>, Christine Schmääl<sup>42</sup>, Michael Soyka<sup>53,54</sup>, Michael C. Stallings<sup>8,55</sup>, Michael Steffens<sup>56</sup>, Jens Treutlein<sup>7</sup>, Ming Tsuang<sup>22</sup>, Tamara L. Wall<sup>22</sup>, Norbert Wodarz<sup>50</sup>, Vadim Yuferov<sup>40</sup>, Peter Zill<sup>57</sup>, Andrew W. Bergen<sup>31</sup>, Jingchun Chen<sup>5</sup>, Paul M. Cinciripini<sup>17</sup>, Howard J Edenberg<sup>58</sup>, Marissa A. Ehringer<sup>8,9</sup>, Robert E. Ferrell<sup>59</sup>, Joel Gelernter<sup>19,60,61</sup>, David Goldman<sup>18</sup>, John K. Hewitt<sup>8,55</sup>, Christian J. Hopfer<sup>62</sup>, William G. Iacono<sup>14</sup>, Jaakko Kaprio<sup>12,13,63</sup>, Mary Jeanne Kreek<sup>40</sup>, Ivo M. Kremensky<sup>21</sup>, Pamela A.F. Madden<sup>3</sup>, Matt McGue<sup>14</sup>, Marcus R. Munafò<sup>64</sup>, Robert A. Philibert<sup>65</sup>, Marcella Rietschel<sup>7</sup>, Alec Roy<sup>66</sup>, Dan Rujescu<sup>11</sup>, Sirkku T. Saarikoski<sup>12</sup>, Gary E. Swan<sup>69</sup>, Alexandre A. Todorov<sup>3</sup>, Michael M. Vanyukov<sup>49</sup>, Robert B. Weiss<sup>67</sup>, Laura J. Bierut<sup>3</sup>, and Nancy L. Saccone<sup>1,\*</sup>

## Affiliations

<sup>1</sup>Department of Genetics, Washington University School of Medicine, St. Louis, Missouri 63110 USA <sup>2</sup>Genometrics Section, Inherited Disease Research Branch, Division of Intramural Research, National Human Genome Research Institute, US National Institutes of Health (NIH), Baltimore, Maryland 21224 USA <sup>3</sup>Department of Psychiatry, Washington University School of Medicine, St. Louis, Missouri 63110 USA <sup>4</sup>Department of Internal Medicine, Washington University School of Medicine, St. Louis, Missouri 63110 USA <sup>5</sup>Virginia Institute for Psychiatric and Behavioral Genetics, Department of Psychiatry, Virginia Commonwealth University, Richmond, Virginia 23298 USA <sup>6</sup>Department of Psychiatry, University of Utah School of Medicine, Salt Lake City 84108 Utah, USA <sup>7</sup>Department of Genetic Epidemiology in Psychiatry, Central Institute of Mental Health, Medical Faculty Mannheim, Heidelberg University, Mannheim 68159 Germany <sup>8</sup>Institute for Behavioral Genetics, University of Colorado, Boulder, Colorado 80309 USA <sup>9</sup>Department of

Integrative Physiology, University of Colorado, Boulder, Colorado 80309 USA  
<sup>10</sup>Department of Biobehavioral Health, The Pennsylvania State University, University Park, Pennsylvania 16802 USA <sup>11</sup>Department of Psychiatry, Universitätsklinikum Halle (Saale), Halle (Saale) 06112 Germany <sup>12</sup>Department of Mental Health and Substance Abuse Services, National Institute for Health and Welfare, Helsinki FI-00271 Finland <sup>13</sup>Department of Public Health, University of Helsinki, Helsinki FI-00014 Finland <sup>14</sup>Department of Psychology, University of Minnesota, Minneapolis, Minnesota 55455 USA <sup>15</sup>Department of Mental Health, Bloomberg School of Public Health, Johns Hopkins University, Baltimore, Maryland 21205 USA <sup>16</sup>Oregon Research Institute, Eugene, Oregon 97403 USA  
<sup>17</sup>Department of Behavioral Science, The University of Texas MD Anderson Cancer Center, Houston, Texas 77030 USA <sup>18</sup>Section of Human Neurogenetics, National Institute on Alcohol Abuse and Alcoholism, Bethesda, Maryland 20892 USA  
<sup>19</sup>Department of Psychiatry, Yale University, New Haven, Connecticut 06516 USA  
<sup>20</sup>Department of Primary Care Health Sciences, University of Oxford, Oxford OX2 6GG United Kingdom <sup>21</sup>Molecular Medicine Center, Department of Medical Chemistry and Biochemistry, Medical University-Sofia, Sofia 1431 Bulgaria  
<sup>22</sup>Department of Psychiatry, University of California San Diego, La Jolla, California 92093 USA <sup>23</sup>Institute of Human Genetics, Dept. of Genomics, Life and Brain Center, University of Bonn, Bonn D-53127 Germany <sup>24</sup>Division of Medical Genetics, Department of Biomedicine, University Hospital Basel, University of Basel, Basel 4003 Switzerland <sup>25</sup>Department of Psychiatry, University of Mainz, Mainz 56368 Germany <sup>26</sup>National Drug and Alcohol Research Centre, University of New South Wales, Randwick, New South Wales NSW 2031 Australia <sup>27</sup>School of Population and Global Health, University of Melbourne, Melbourne 3010 Australia  
<sup>28</sup>Department of Medical and Molecular Genetics, Indiana University School of Medicine, Indianapolis, Indiana 46202 USA <sup>29</sup>University of Düsseldorf, Düsseldorf 40225 Germany <sup>30</sup>Department of Psychiatry and Behavioral Sciences, SUNY Upstate Medical University, Syracuse, NY 13210 USA <sup>31</sup>Center for Health Sciences, Biosciences Division, SRI International, Menlo Park, California 94025 USA  
<sup>32</sup>University of Bonn, Bonn 53113 Germany <sup>33</sup>Institute of Behavioral Science, University of Colorado, Boulder, Colorado 80309 USA <sup>34</sup>Max-Planck-Institute of Psychiatry, Munich 80804 Germany <sup>35</sup>Behavioral Health Research Division, Research Triangle Institute International, Durham, North Carolina 27709 USA  
<sup>36</sup>Department of Oncology, University of Oxford, Oxford OX3 7DQ United Kingdom  
<sup>37</sup>Department of Addictive Behavior and Addiction Medicine, Central Institute of Mental Health, Medical Faculty Mannheim, Heidelberg University, Mannheim 68159 Germany <sup>38</sup>Department of Psychiatry, Perelman School of Medicine, University of Pennsylvania, Philadelphia, Pennsylvania 19104 USA <sup>39</sup>Molecular, Cellular, and Developmental Biology, University of Colorado, Boulder, Colorado 80309 USA  
<sup>40</sup>Laboratory of the Biology of Addictive Diseases, The Rockefeller University, New York, New York 10065 USA <sup>41</sup>Addictions Department, Institute of Psychiatry, King's College London, London SE5 8BB United Kingdom <sup>42</sup>Central Institute of Mental Health, Medical Faculty Mannheim, Heidelberg University, Mannheim 68159

Germany <sup>43</sup>Department of Genetic Epidemiology, Queensland Institute of Medical Research, Brisbane, Queensland QLD 4029 Australia <sup>44</sup>Harvard School of Public Health, Boston, Massachusetts 02115 USA <sup>45</sup>Aarhus University, Aarhus DK-8000 Denmark <sup>47</sup>Childhood Cancer Research Group, University of Oxford, Oxford OX3 7LG United Kingdom <sup>48</sup>Department of Psychiatry, Indiana University School of Medicine, Indianapolis, Indiana 46202 USA <sup>49</sup>Department of Pharmaceutical Sciences, University of Pittsburgh, Pittsburgh, Pennsylvania 15213 USA <sup>50</sup>Department of Psychiatry, University Medical Center Regensburg, University of Regensburg, Regensburg 8548 Germany <sup>51</sup>Department of Psychological and Brain Sciences, Indiana University, Bloomington, Indiana 47405 USA <sup>52</sup>Addiction Research Group at the Department of Psychiatry and Psychotherapy, LVR Hospital Essen, University of Duisburg-Essen, Essen 45147 Germany <sup>53</sup>Department of Psychiatry, University of Munich, Munich 3860 Germany <sup>54</sup>Private Hospital Meiringen, Meiringen, Switzerland <sup>55</sup>Department of Psychology & Neuroscience, University of Colorado, Boulder, Colorado 80309 USA <sup>56</sup>Research Department, Federal Institute for Drugs and Medical Devices (BfArM), Kurt-Georg-Kiesinger-Allee 3, D-53175 Bonn, Germany <sup>57</sup>University of Munich, Munich, Germany <sup>58</sup>Department of Biochemistry and Molecular Biology, Indiana University School of Medicine, Indianapolis, Indiana 46202 USA <sup>59</sup>Department of Human Genetics, University of Pittsburgh, Pittsburgh, Pennsylvania 15261 USA <sup>60</sup>Department of Genetics, Yale University, New Haven, Connecticut 06516 USA <sup>61</sup>Department of Neurobiology, Yale University, New Haven, Connecticut 06516 USA <sup>62</sup>Department of Psychiatry, University of Colorado Anschutz Medical Campus, Aurora, Colorado 80045 USA <sup>63</sup>Institute for Molecular Medicine FIMM, University of Helsinki, Helsinki FI-00014 Finland <sup>64</sup>MRC Integrative Epidemiology Unit, UK Centre for Tobacco and Alcohol Studies, and School of Experimental Psychology, University of Bristol, Bristol BS8 1TU United Kingdom <sup>65</sup>Department of Psychiatry, University of Iowa, Iowa City, Iowa 52242 USA <sup>66</sup>Psychiatry Service, Department of Veteran Affairs, New Jersey VA Health Care System, East Orange, New Jersey 07018 USA <sup>67</sup>Department of Human Genetics, University of Utah School of Medicine, Salt Lake City, Utah 84112 USA <sup>68</sup>Psychiatric Hospital, Konigsfelden, Switzerland <sup>69</sup>Stanford Prevention Research Center, Department of Medicine, Stanford University School of Medicine, CA 94304, USA <sup>70</sup>Chinese Academy of Sciences, Key Laboratory of Brain Function and Disease, School of Life Sciences, University of Science and Technology of China, Hefei, Anhui, 230026, China

## ACKNOWLEDGEMENTS

For facilitating this collaboration to meta-analyze rs1799971, we thank Jonathan Pollock and the National Institute on Drug Abuse, which provided infrastructure support through conference calls and meetings. For this project we wish to acknowledge and thank the following people. For meta-analysis coordination at Washington University: Weimin Duan. For administrative support at Washington University: Sherri Fisher. We also thank Michael Bruchas, Washington University, for helpful discussions. **For CADD:** principal investigators John Hewitt, Institute for Behavioral Genetics, University of Colorado Boulder; Michael Stallings, Institute for Behavioral Genetics, University of Colorado Boulder; Christian Hopfer, University of Denver; Sandra Brown, University of California San Diego. **For COGA:** Principal Investigators B. Porjesz, V. Hesselbrock, H. Edenberg, L. Bierut; COGA includes ten different centers: University of Connecticut (V. Hesselbrock); Indiana University (H.J. Edenberg, J. Nurnberger

Jr., T. Foroud); University of Iowa (S. Kuperman, J. Kramer); SUNY Downstate (B. Porjesz); Washington University in St. Louis (L. Bierut, A. Goate, J. Rice, K. Bucholz); University of California at San Diego (M. Schuckit); Rutgers University (J. Tischfield); Texas Biomedical Research Institute (L. Almasy), Howard University (R. Taylor) and Virginia Commonwealth University (D. Dick). Other COGA collaborators include: L. Bauer (University of Connecticut); D. Koller, S. O'Connor, L. Wetherill, X. Xuei (Indiana University); Grace Chan (University of Iowa); S. Kang, N. Manz, M. Rangaswamy (SUNY Downstate); J. Rohrbach, J-C Wang (Washington University in St. Louis); A. Brooks (Rutgers University); and F. Aliev (Virginia Commonwealth University). A. Parsian and M. Reilly are the NIAAA Staff Collaborators. We continue to be inspired by our memories of Henri Begleiter and Theodore Reich, founding PI and Co-PI of COGA, and also owe a debt of gratitude to other past organizers of COGA, including Ting-Kai Li, currently a consultant with COGA, P. Michael Conneally, Raymond Crowe, and Wendy Reich, for their critical contributions. The authors thank Kim Doheny and Elizabeth Pugh from CIDR and Justin Paschall from the NCBI dbGaP staff for valuable assistance with genotyping and quality control in developing the dataset available at dbGaP. For COGEND: COGEND is a collaborative research group and a part of the NIDA Genetics Consortium. Michael Brent, Alison Goate, Dorothy Hatsukami, Anthony Hinrichs, Heidi Kromrei, Tracey Richmond, Joe Henry Steinbach, Jerry Stitzel, Scott Saccone, Sharon Murphy; in memory of Theodore Reich, founding Principal Investigator of COGEND, we are indebted to his leadership in the establishment and nurturing of COGEND and acknowledge with great admiration his seminal scientific contributions to the field. For GADD: John Hewitt, Institute for Behavioral Genetics, University of Colorado Boulder; Michael Stallings, Institute for Behavioral Genetics, University of Colorado Boulder; Christian Hopfer, University of Denver; Sandra Brown, University of California San Diego. For Kreek: Matthew Randesi. For NAG: Yi-Ling Chou. For Yale-Penn: Genotyping services for a part of Yale-Penn were provided by the Center for Inherited Disease Research (CIDR) and Yale University (Center for Genome Analysis).

**Funding Acknowledgments:** R01 DA026911 from The National Institute on Drug Abuse (NIDA) supported this project and the coordinating team at Washington University. BG/ROMA are supported by R01 DA018823 from NIDA. CADD/GADD/NYS are supported by R01 DA021905, R01 AA017889, P60 DA011015, R01 DA012845, T32 DA017637, R01 DA021913, K24DA032555 and K01 AA019447 from NIDA and NIAAA. CATS is supported by R01 DA017305 from NIDA. Dr. Degenhardt is supported by an Australian National Health and Medical Research Council Principal Research Fellowship. The National Drug and Alcohol Research Centre at the University of NSW is supported by funding from the Australian Government under the Substance Misuse Prevention and Service Improvements Grants Fund. CEDAR-SADS is supported by R01 DA019157, P50 DA005605 (CEDAR) and R01 DA011922 (SADS) from NIDA. Cinciripini was supported by R01 DA1182 (CASSI), K07 CA92209 (PEERS EMA), R21 CA81649 (PEERS NS), P50 CA070907 (PEERS WS) and P50 CA70907 (SCOPE) from NIDA and NCI. COGA is supported by U10 AA008401 from NIAAA and genotyping was supported by U01 HG004438 from The Genes and Environment Initiative (GEI) and HHSN268200782096C from the National Institutes of Health (NIH). COGEND is supported by R01 DA019963, R01 DA013423, P01 CA089392, R01 DA026911, and R01DA036583 from NIDA and the National Cancer Institute (NCI). Finnish Health 2000 is supported by Finnish National Institute for Health and Welfare institutional funding. Funding for COGEND genotyping was provided by 1 X01 HG005274-01 and performed at Center for Inherited Disease Research (CIDR) which is funded through a federal contract from NIH to JHU (HHSN268200782096C). Gene Environment Association Studies (GENEVA) Coordinating Center assisted with genotype cleaning as well as general study coordination. GENEVA is supported by U01 HG004446. FSCD is supported by R01 DA013423 from NIDA. FTC/FT12 is supported by K02 AA018755, AA-09203 and AA-12502 from the National Institute on Alcohol Abuse and Alcoholism (NIAAA), 141054 and 263278 from Academy of Finland. FTC/NAG-FIN is funded by GRAND from Pfizer Inc., 213506 and 129680 from Academy of Finland, Health-F4-2007-201413 from European Union Seventh Framework Programme, ENGAGE-project, DA12854 from NIDA, Wellcome Trust Sanger Institute, Sigrid Juselius Foundation and Jenny & Antti Wihuri Foundation. GESGA is supported by 01EB0410 from the German Federal Ministry of Education and Research, FZK 01GS08152 from National Genome Research Network (NGFN Plus), BMBF 01ZX1311A (e:Med program), and Alfried Krupp von Bohlen und Halbach-Stiftung. IAS is supported by R01 DA015789 from NIDA. Kreek is supported by P50 DA05130 from NIDA and The Adelson Medical Research Foundation. MCTFR is supported by R01 DA005147, R01 DA013240, U01 DA024417 from NIDA, R01 AA009367 and R01 AA0011886 from NIAAA and R01 MH066140 from the National Institute of Mental Health (NIMH). MGHF is supported by R01 DA012846 from NIDA/NIH, and grants from the National Institutes of Health, the National Science Foundation, NARSAD: The Brain and Behavior Research Foundation, the Sidney R. Baer, Jr. Foundation, and the Gerber Foundation. OYSUP is supported by RC2 DA028793 from NIDA. OZALC-NAG is supported by R01 AA075356, R01 AA07728, R01 AA13220, R01 AA13321, R01 AA13322, R01 AA11998 and R01 AA17688 from NIAAA, R01 DA12854 and K08 DA019951 from NIDA and grants from the Australian National Health and Medical Research Council. Patch II/PiP are supported by C53/A6281 from Cancer Research UK. Marcus Munafò and Paul Aveyard are members of the United Kingdom Centre for Tobacco and Alcohol Studies, a UKCRC Public Health Research: Centre of Excellence. Funding from British Heart Foundation, Cancer Research UK, Economic and Social Research Council, Medical Research Council, and the National Institute for Health Research, under the auspices of the UK Clinical Research Collaboration, is gratefully acknowledged. SMOFAM is supported by R01 DA003706, U01 DA020830 from NIDA and 7PT2000-2004 from University of California Tobacco-Related Disease Research Program. Utah is supported by P01 HL72903 from NIDA and NHLBI. VA-Twin is supported by DA019498 from NIDA. Yale-Penn is supported by RC2 DA028909, R01 DA12690, R01 DA12849, R01 DA18432 and K01 DA24758 from NIDA, R01

AA017535 and R01 AA11330 from NIAAA and Young Investigator Award from NARSAD: the Brain and Behavior Research Fund. This project was also supported in part by the Division of Intramural Research Program of the National Human Genome Research Institute, National Institutes of Health. Funding sources had no further role in the study design; in the collection, analysis and interpretation of data; in the writing; or in the decision to submit the paper for publication.

## REFERENCES

- American Psychiatric Association. Diagnostic and Statistical Manual of Mental Disorders. 5th Edition. Washington, DC: 2013.
- Andrews JA, Tildesley E, Hops H, Duncan SC, Severson HH. Elementary school age children's future intentions and use of substances. *J Clin Child Adolesc Psychol*. 2003; 32(4):556–567. [PubMed: 14710464]
- Arias A, Feinn R, Kranzler HR. Association of an Asn40Asp (A118G) polymorphism in the mu-opioid receptor gene with substance dependence: a meta-analysis. *Drug Alcohol Depend*. 2006; 83(3):262–268. [PubMed: 16387451]
- Aromaa, A.; Koskinen, S. Health and functional capacity in Finland: Baseline Results of the Health 2000 Health Examination Survey. Helsinki, Finland: National Public Health Institute; 2004.
- Bart G, Kreek MJ, Ott J, LaForge KS, Proudnikov D, Pollak L, Heilig M. Increased attributable risk related to a functional mu-opioid receptor gene polymorphism in association with alcohol dependence in central Sweden. *Neuropsychopharmacology*. 2005; 30(2):417–422. [PubMed: 15525999]
- Beaufort K, Filliol D, Decaillet FM, Gaveriaux-Ruff C, Hoehe MR, Kieffer BL. A single nucleotide polymorphic mutation in the human mu-opioid receptor severely impairs receptor signaling. *The Journal of biological chemistry*. 2001; 276(5):3130–3137. [PubMed: 11067846]
- Bergen AW, Kokoszka J, Peterson R, Long JC, Virkkunen M, Linnoila M, Goldman D. Mu opioid receptor gene variants: lack of association with alcohol dependence. *Mol Psychiatry*. 1997; 2(6):490–494. [PubMed: 9399694]
- Beyer A, Koch T, Schroder H, Schulz S, Hollt V. Effect of the A118G polymorphism on binding affinity, potency and agonist-mediated endocytosis, desensitization, and resensitization of the human mu-opioid receptor. *J Neurochem*. 2004; 89(3):553–560. [PubMed: 15086512]
- Bierut LJ, Agrawal A, Bucholz KK, Doheny KF, Laurie C, Pugh E, Fisher S, Fox L, Howells W, Bertelsen S, Hinrichs AL, Almasy L, Breslau N, Culverhouse RC, Dick DM, Edenberg HJ, Foroud T, Gruza RA, Hatsukami D, Hesselbrock V, Johnson EO, Kramer J, Krueger RF, Kuperman S, Lynskey M, Mann K, Neuman RJ, Nothen MM, Nurnberger JI Jr, Porjesz B, Ridinger M, Saccone NL, Saccone SF, Schuckit MA, Tischfield JA, Wang JC, Rietschel M, Goate AM, Rice JP. A genome-wide association study of alcohol dependence. *Proceedings of the National Academy of Sciences of the United States of America*. 2010; 107(11):5082–5087. [PubMed: 20202923]
- Bierut LJ, Dinwiddie SH, Begleiter H, Crowe RR, Hesselbrock V, Nurnberger JI Jr, Porjesz B, Schuckit MA, Reich T. Familial transmission of substance dependence: alcohol, marijuana, cocaine, and habitual smoking: a report from the Collaborative Study on the Genetics of Alcoholism. *Arch Gen Psychiatry*. 1998; 55(11):982–988. [PubMed: 9819066]
- Bierut LJ, Strickland JR, Thompson JR, Afful SE, Cottler LB. Drug use and dependence in cocaine dependent subjects, community-based individuals, and their siblings. *Drug Alcohol Depend*. 2008; 95(1–2):14–22. [PubMed: 18243582]
- Bond C, LaForge KS, Tian M, Melia D, Zhang S, Borg L, Gong J, Schluger J, Strong JA, Leal SM, Tischfield JA, Kreek MJ, Yu L. Single-nucleotide polymorphism in the human mu opioid receptor gene alters beta-endorphin binding and activity: possible implications for opiate addiction. *Proceedings of the National Academy of Sciences of the United States of America*. 1998; 95(16):9608–9613. [PubMed: 9689128]
- Broms U, Wedenoja J, Largeau MR, Korhonen T, Pitkaniemi J, Keskitalo-Vuokko K, Happola A, Heikkila KH, Heikkila K, Ripatti S, Sarin AP, Salminen O, Paunio T, Pergadia ML, Madden PA, Kaprio J, Loukola A. Analysis of detailed phenotype profiles reveals CHRNA5-CHRNA3-CHRNA4 gene cluster association with several nicotine dependence traits. *Nicotine Tob Res*. 2012; 14(6):720–733. [PubMed: 22241830]

- Carter BL, Lam CY, Robinson JD, Paris MM, Waters AJ, Wetter DW, Cinciripini PM. Real-time craving and mood assessments before and after smoking. *Nicotine Tob Res.* 2008; 10(7):1165–1169. [PubMed: 18629726]
- Chen D, Liu L, Xiao Y, Peng Y, Yang C, Wang Z. Ethnic-specific meta-analyses of association between the OPRM1 A118G polymorphism and alcohol dependence among Asians and Caucasians. *Drug Alcohol Depend.* 2012a; 123(1–3):1–6. [PubMed: 22071118]
- Chen LS, Saccone NL, Culverhouse RC, Bracci PM, Chen CH, Dueker N, Han Y, Huang H, Jin G, Kohno T, Ma JZ, Przybeck TR, Sanders AR, Smith JA, Sung YJ, Wenzlaff AS, Wu C, Yoon D, Chen YT, Cheng YC, Cho YS, David SP, Duan J, Eaton CB, Furberg H, Goate AM, Gu D, Hansen HM, Hartz S, Hu Z, Kim YJ, Kittner SJ, Levinson DF, Mosley TH, Payne TJ, Rao DC, Rice JP, Rice TK, Schwantes-An TH, Shete SS, Shi J, Spitz MR, Sun YV, Tsai FJ, Wang JC, Wensch MR, Xian H, Gejman PV, He J, Hunt SC, Kardia SL, Li MD, Lin D, Mitchell BD, Park T, Schwartz AG, Shen H, Wiencke JK, Wu JY, Yokota J, Amos CI, Bierut LJ. Smoking and genetic risk variation across populations of European, Asian, and African American ancestry—a meta-analysis of chromosome 15q25. *Genet Epidemiol.* 2012b; 36(4):340–351. [PubMed: 22539395]
- Chen X, Chen J, Williamson VS, An SS, Hetta JM, Aggen SH, Neale MC, Kendler KS. Variants in nicotinic acetylcholine receptors alpha5 and alpha3 increase risks to nicotine dependence. *Am J Med Genet B Neuropsychiatr Genet.* 2009
- Cheverud JM. A simple correction for multiple comparisons in interval mapping genome scans. *Heredity.* 2001; 87(Pt 1):52–58. [PubMed: 11678987]
- Cinciripini PM, Robinson JD, Carter BL, Lam C, Wu X, de Moor CA, Baile WF, Wetter DW. The effects of smoking deprivation and nicotine administration on emotional reactivity. *Nicotine Tob Res.* 2006; 8(3):379–392. [PubMed: 16801296]
- Cinciripini PM, Tsoh JY, Wetter DW, Lam C, de Moor C, Cinciripini L, Baile W, Anderson C, Minna JD. Combined effects of venlafaxine, nicotine replacement, and brief counseling on smoking cessation. *Exp Clin Psychopharmacol.* 2005; 13(4):282–292. [PubMed: 16366758]
- Clarke TK, Crist RC, Kampman KM, Dackis CA, Pettinati HM, O'Brien CP, Oslin DW, Ferraro TN, Lohoff FW, Berrettini WH. Low frequency genetic variants in the mu-opioid receptor (OPRM1) affect risk for addiction to heroin and cocaine. *Neurosci Lett.* 2013; 542:71–75. [PubMed: 23454283]
- Coller JK, Beardsley J, Bignold J, Li Y, Merg F, Sullivan T, Cox TC, Somogyi AA. Lack of association between the A118G polymorphism of the mu opioid receptor gene (OPRM1) and opioid dependence: A meta-analysis. *Pharmacogenomics Pers Med.* 2009:29–19.
- Crist RC, Berrettini WH. Pharmacogenetics of OPRM1. *Pharmacol Biochem Behav.* 2013
- Cross-Disorder Group of the Psychiatric Genomics Consortium. Identification of risk loci with shared effects on five major psychiatric disorders: a genome-wide analysis. *Lancet.* 2013; 381(9875):1371–1379. [PubMed: 23453885]
- Crowley JJ, Oslin DW, Patkar AA, Gottheil E, DeMaria PA Jr, O'Brien CP, Berrettini WH, Grice DE. A genetic association study of the mu opioid receptor and severe opioid dependence. *Psychiatr Genet.* 2003; 13(3):169–173. [PubMed: 12960749]
- David SP, Johnstone EC, Churchman M, Aveyard P, Murphy MF, Munafo MR. Pharmacogenetics of smoking cessation in general practice: results from the Patch II and Patch in Practice trials. *Nicotine Tob Res.* 2011; 13(3):157–167. [PubMed: 21330274]
- Deb I, Chakraborty J, Gangopadhyay PK, Choudhury SR, Das S. Single-nucleotide polymorphism (A118G) in exon 1 of OPRM1 gene causes alteration in downstream signaling by mu-opioid receptor and may contribute to the genetic risk for addiction. *J Neurochem.* 2010; 112(2):486–496. [PubMed: 19891732]
- Drakenberg K, Nikoshkov A, Horvath MC, Fagergren P, Gharibyan A, Saarelainen K, Rahman S, Nylander I, Bakalkin G, Rajs J, Keller E, Hurd YL. Mu opioid receptor A118G polymorphism in association with striatal opioid neuropeptide gene expression in heroin abusers. *Proceedings of the National Academy of Sciences of the United States of America.* 2006; 103(20):7883–7888. [PubMed: 16682632]
- Edenberg HJ. The collaborative study on the genetics of alcoholism: an update. *Alcohol Res Health.* 2002; 26(3):214–218. [PubMed: 12875050]



- Edenberg HJ, Koller DL, Xuei X, Wetherill L, McClintick JN, Almasy L, Bierut LJ, Bucholz KK, Goate A, Aliev F, Dick D, Hesselbrock V, Hinrichs A, Kramer J, Kuperman S, Nurnberger JI Jr, Rice JP, Schuckit MA, Taylor R, Todd Webb B, Tischfield JA, Porjesz B, Foroud T. Genome-wide association study of alcohol dependence implicates a region on chromosome 11. *Alcohol Clin Exp Res.* 2010; 34(5):840–852. [PubMed: 20201924]
- Elliott, DS.; Huizinga, D.; Ageton, SS. *Explaining delinquency and drug use.* Beverly Hills, CA: Sage Publications; 1985.
- Elliott, DS.; Huizinga, D.; Menard, S. *Multiple Problem Youth: Delinquency, Drugs and Mental Health Problems.* New York, NY: Springer; 1989.
- Frank J, Cichon S, Treutlein J, Ridinger M, Mattheisen M, Hoffmann P, Herms S, Wodarz N, Soyka M, Zill P, Maier W, Mossner R, Gaebel W, Dahmen N, Scherbaum N, Schmal C, Steffens M, Lucae S, Ising M, Muller-Myhsok B, Nothen MM, Mann K, Kiefer F, Rietschel M. Genome-wide significant association between alcohol dependence and a variant in the ADH gene cluster. *Addict Biol.* 2012; 17(1):171–180. [PubMed: 22004471]
- Franke P, Wang T, Nothen MM, Knapp M, Neidt H, Albrecht S, Jahnes E, Propping P, Maier W. Nonreplication of association between mu-opioid-receptor gene (OPRM1) A118G polymorphism and substance dependence. *American journal of medical genetics.* 2001; 105(1):114–119. [PubMed: 11424981]
- Gelernter J, Kranzler H, Cubells J. Genetics of two mu opioid receptor gene (OPRM1) exon I polymorphisms: population studies, and allele frequencies in alcohol- and drug-dependent subjects. *Mol Psychiatry.* 1999; 4(5):476–483. [PubMed: 10523821]
- Gelernter J, Kranzler HR, Sherva R, Almasy L, Koesterer R, Smith AH, Anton R, Preuss UW, Ridinger M, Rujescu D, Wodarz N, Zill P, Zhao H, Farrer LA. Genome-wide association study of alcohol dependence: significant findings in African- and European-Americans including novel risk loci. *Mol Psychiatry.* 2014; 19(1):41–49. [PubMed: 24166409]
- Gelernter J, Kranzler HR, Sherva R, Koesterer R, Almasy L, Zhao H, Farrer LA. Genome-Wide association study of opioid dependence: multiple associations mapped to calcium and potassium pathways. *Biol Psychiatry.* 2013a
- Gelernter J, Sherva R, Koesterer R, Almasy L, Zhao H, Kranzler HR, Farrer L. Genome-wide association study of cocaine dependence and related traits: FAM53B identified as a risk gene. *Mol Psychiatry.* 2013b
- Glatt SJ, Bousman C, Wang RS, Murthy KK, Rana BK, Lasky-Su JA, Zhu SC, Zhang R, Li J, Zhang B, Lyons MJ, Faraone SV, Tsuang MT. Evaluation of OPRM1 variants in heroin dependence by family-based association testing and meta-analysis. *Drug Alcohol Depend.* 2007; 90(2–3):159–165. [PubMed: 17416470]
- Gruzca RA, Wang JC, Stitzel JA, Hinrichs AL, Saccone SF, Saccone NL, Bucholz KK, Cloninger CR, Neuman RJ, Budde JP, Fox L, Bertelsen S, Kramer J, Hesselbrock V, Tischfield J, Nurnberger JI Jr, Almasy L, Porjesz B, Kuperman S, Schuckit MA, Edenberg HJ, Rice JP, Goate AM, Bierut LJ. A risk allele for nicotine dependence in CHRNA5 is a protective allele for cocaine dependence. *Biol Psychiatry.* 2008; 64(11):922–929. [PubMed: 18519132]
- Haerian BS, Haerian MS. OPRM1 rs1799971 polymorphism and opioid dependence: evidence from a meta-analysis. *Pharmacogenomics.* 2013; 14(7):813–824. [PubMed: 23651028]
- Hall FS, Drgonova J, Jain S, Uhl GR. Implications of genome wide association studies for addiction: are our a priori assumptions all wrong? *Pharmacol Ther.* 2013; 140(3):267–279. [PubMed: 23872493]
- Hancock DB, Levy JL, Gaddis NC, Glasheen C, Saccone NL, Page GP, Hulse GK, Wildenauer D, Keltly EA, Schwab SG, Degenhardt L, Martin NG, Montgomery GW, Attia J, Holliday EG, McEvoy M, Scott RJ, Bierut LJ, Nelson EC, Kral AH, Johnson EO. Cis-Expression Quantitative Trait Loci Mapping Reveals Replicable Associations with Heroin Addiction in OPRM1. *Biol Psychiatry.* 2015
- Hardin J, He Y, Javitz HS, Wessel J, Krasnow RE, Tildesley E, Hops H, Swan GE, Bergen AW. Nicotine withdrawal sensitivity, linkage to chr6q26, and association of OPRM1 SNPs in the SMOKing in FAMilies (SMOFAM) sample. *Cancer Epidemiol Biomarkers Prev.* 2009; 18(12): 3399–3406. [PubMed: 19959688]

- Hart AB, de Wit H, Palmer AA. Candidate gene studies of a promising intermediate phenotype: failure to replicate. *Neuropsychopharmacology*. 2013; 38(5):802–816. [PubMed: 23303064]
- Hartz SM, Short SE, Saccone NL, Culverhouse R, Chen L, Schwantes-An TH, Coon H, Han Y, Stephens SH, Sun J, Chen X, Ducci F, Dueker N, Franceschini N, Frank J, Geller F, Gubjartsson D, Hansel NN, Jiang C, Keskitalo-Vuokko K, Liu Z, Lyytikainen LP, Michel M, Rawal R, Rosenberger A, Scheet P, Shaffer JR, Teumer A, Thompson JR, Vink JM, Vogelzangs N, Wenzlaff AS, Wheeler W, Xiao X, Yang BZ, Aggen SH, Balmforth AJ, Baumeister SE, Beaty T, Bennett S, Bergen AW, Boyd HA, Broms U, Campbell H, Chatterjee N, Chen J, Cheng YC, Cichon S, Couper D, Cucca F, Dick DM, Foroud T, Furberg H, Giegling I, Gu F, Hall AS, Hallfors J, Han S, Hartmann AM, Hayward C, Heikkila K, Hewitt JK, Hottenga JJ, Jensen MK, Jousilahti P, Kaakinen M, Kittner SJ, Konte B, Korhonen T, Landi MT, Laatikainen T, Leppert M, Levy SM, Mathias RA, McNeil DW, Medland SE, Montgomery GW, Muley T, Murray T, Nauck M, North K, Pergadia M, Polasek O, Ramos EM, Ripatti S, Risch A, Ruczinski I, Rudan I, Salomaa V, Schlessinger D, Styrkarsdottir U, Terracciano A, Uda M, Willemsen G, Wu X, Abecasis G, Barnes K, Bickeboller H, Boerwinkle E, Boomsma DI, Caporaso N, Duan J, Edenberg HJ, Francks C, Gejman PV, Gelernter J, Grabe HJ, Hops H, Jarvelin MR, Viikari J, Kahonen M, Kendler KS, Lehtimaki T, Levinson DF, Marazita ML, Marchini J, Melbye M, Mitchell BD, Murray JC, Nothen MM, Penninx BW, Raitakari O, Rietschel M, Rujescu D, Samani NJ, Sanders AR, Schwartz AG, Shete S, Shi J, Spitz M, Stefansson K, Swan GE, Thorgeirsson T, Volzke H, Wei Q, Wichmann HE, Amos CI, Breslau N, Cannon DS, Ehringer M, Gruzza R, Hatsukami D, Heath A, Johnson EO, Kaprio J, Madden P, Martin NG, Stevens VL, Stitzel JA, Weiss RB, Kraft P, Bierut LJ. Increased Genetic Vulnerability to Smoking at CHRNA5 in Early-Onset Smokers. *Arch Gen Psychiatry*. 2012; 69(8):854–860. [PubMed: 22868939]
- Heatherton TF, Kozlowski LT, Frecker RC, Fagerstrom KO. The Fagerstrom Test for Nicotine Dependence: a revision of the Fagerstrom Tolerance Questionnaire. *Br J Addict*. 1991; 86(9): 1119–1127. [PubMed: 1932883]
- Hoft NR, Corley RP, McQueen MB, Schlaepfer IR, Huizinga D, Ehringer MA. Genetic association of the CHRNA6 and CHRNA3 genes with tobacco dependence in a nationally representative sample. *Neuropsychopharmacology*. 2009; 34(3):698–706. [PubMed: 18704094]
- Hops, H.; Andrews, JA.; Duncan, SC.; Duncan, TE.; Tildesley, E. Adolescent drug use development: a social interactional and contextual perspective. In: Sameroff, AJ.; Lewis, M., editors. *Handbook of Developmental Psychopathology*. New York: Cluwer Academic/Plenum; 2000. p. 589-605.
- Huang P, Chen C, Mague SD, Blendy JA, Liu-Chen LY. A common single nucleotide polymorphism A118G of the mu opioid receptor alters its N-glycosylation and protein stability. *Biochem J*. 2012; 441(1):379–386. [PubMed: 21864297]
- Iacono WG, Carlson SR, Taylor J, Elkins IJ, McGue M. Behavioral disinhibition and the development of substance-use disorders: findings from the Minnesota Twin Family Study. *Dev Psychopathol*. 1999; 11(4):869–900. [PubMed: 10624730]
- Kamens HM, Corley RP, McQueen MB, Stallings MC, Hopfer CJ, Crowley TJ, Brown SA, Hewitt JK, Ehringer MA. Nominal association with CHRNA4 variants and nicotine dependence. *Genes Brain Behav*. 2013; 12(3):297–304. [PubMed: 23350800]
- Kaprio J, Pulkkinen L, Rose RJ. Genetic and environmental factors in health-related behaviors: studies on Finnish twins and twin families. *Twin Res*. 2002; 5(5):366–371. [PubMed: 12537860]
- Kendler KS, Myers J, Prescott CA. Specificity of genetic and environmental risk factors for symptoms of cannabis, cocaine, alcohol, caffeine, and nicotine dependence. *Arch Gen Psychiatry*. 2007; 64(11):1313–1320. [PubMed: 17984400]
- Keys MA, Malone SM, Elkins IJ, Legerand LN, McGue M, Iacono WG. The enrichment study of the Minnesota twin family study: increasing the yield of twin families at high risk for externalizing psychopathology. *Twin Res Hum Genet*. 2009; 12(5):489–501. [PubMed: 19803776]
- Kim SG, Kim CM, Kang DH, Kim YJ, Byun WT, Kim SY, Park JM, Kim MJ, Oslin DW. Association of functional opioid receptor genotypes with alcohol dependence in Koreans. *Alcohol Clin Exp Res*. 2004; 28(7):986–990. [PubMed: 15252283]
- Kreek MJ, Koob GF. Drug dependence: stress and dysregulation of brain reward pathways. *Drug Alcohol Depend*. 1998; 51(1–2):23–47. [PubMed: 9716928]

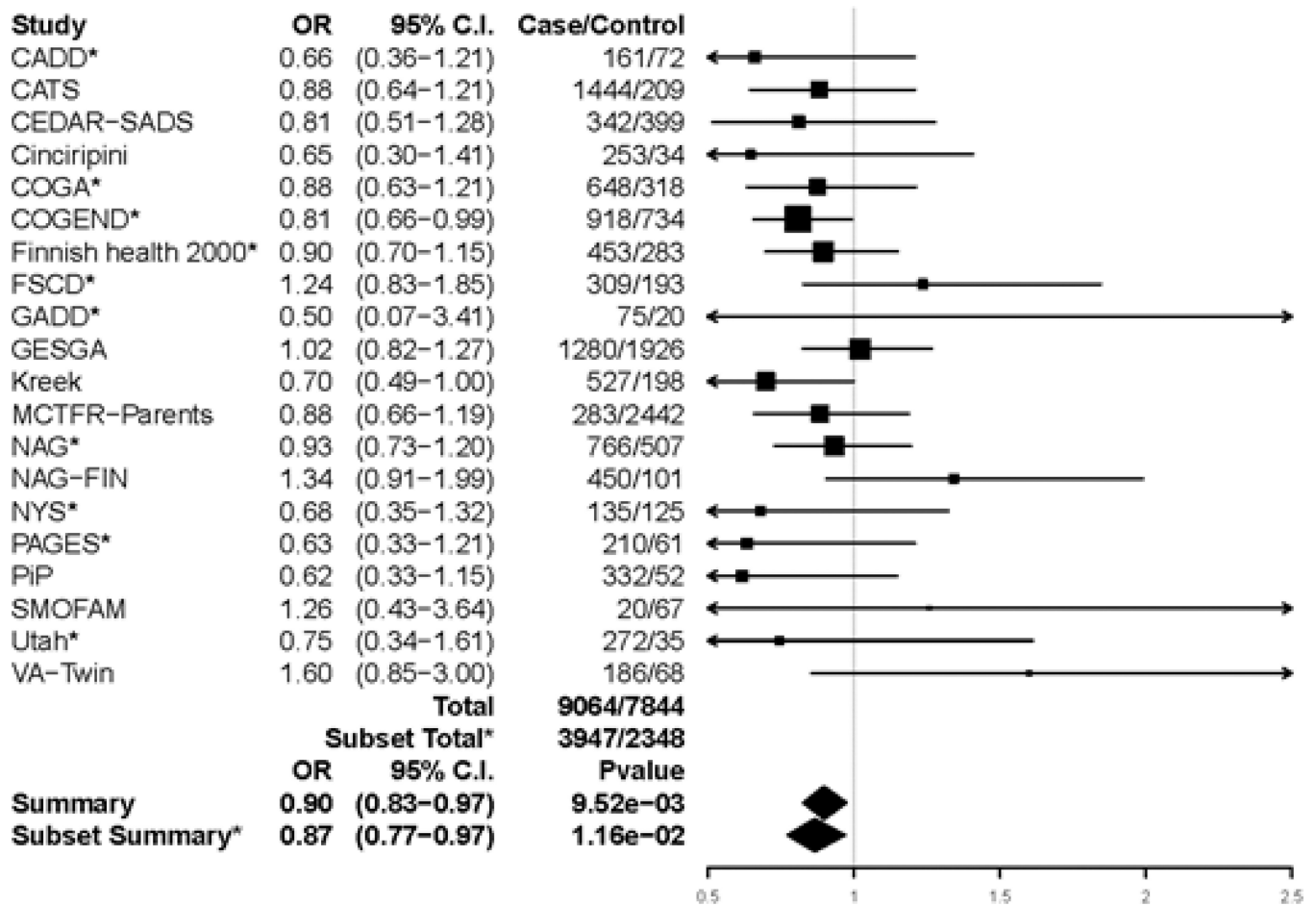
- Lam CY, Robinson JD, Versace F, Minnix JA, Cui Y, Carter BL, Wetter DW, Cinciripini PM. Affective reactivity during smoking cessation of never-quitters as compared with that of abstainers, relapsers, and continuing smokers. *Exp Clin Psychopharmacol.* 2012; 20(2):139–150. [PubMed: 22039752]
- Lessov CN, Martin NG, Statham DJ, Todorov AA, Slutske WS, Bucholz KK, Heath AC, Madden PA. Defining nicotine dependence for genetic research: evidence from Australian twins. *Psychological medicine.* 2004; 34(5):865–879. [PubMed: 15500307]
- Levrano O, Londono D, O'Hara K, Nielsen DA, Peles E, Rotrosen J, Casadonte P, Linzy S, Randesi M, Ott J, Adelson M, Kreek MJ. Genetic susceptibility to heroin addiction: a candidate gene association study. *Genes Brain Behav.* 2008; 7(7):720–729. [PubMed: 18518925]
- Levrano O, Yuferov V, Kreek MJ. The genetics of the opioid system and specific drug addictions. *Hum Genet.* 2012; 131(6):823–842. [PubMed: 22547174]
- Li J, Ji L. Adjusting multiple testing in multilocus analyses using the eigenvalues of a correlation matrix. *Heredity.* 2005; 95(3):221–227. [PubMed: 16077740]
- Liu JZ, Tozzi F, Waterworth DM, Pillai SG, Muglia P, Middleton L, Berrettini W, Knouff CW, Yuan X, Waeber G, Vollenweider P, Preisig M, Wareham NJ, Zhao JH, Loos RJ, Barroso I, Khaw KT, Grundy S, Barter P, Mahley R, Kesaniemi A, McPherson R, Vincent JB, Strauss J, Kennedy JL, Farmer A, McGuffin P, Day R, Matthews K, Bakke P, Gulsvik A, Lucae S, Ising M, Brueckl T, Horstmann S, Wichmann HE, Rawal R, Dahmen N, Lamina C, Polasek O, Zgaga L, Huffman J, Campbell S, Kooner J, Chambers JC, Burnett MS, Devaney JM, Pichard AD, Kent KM, Sattler L, Lindsay JM, Waksman R, Epstein S, Wilson JF, Wild SH, Campbell H, Vitart V, Reilly MP, Li M, Qu L, Wilensky R, Matthaï W, Hakonarson HH, Rader DJ, Franke A, Wittig M, Schafer A, Uda M, Terracciano A, Xiao X, Busonero F, Scheet P, Schlessinger D, St Clair D, Rujescu D, Abecasis GR, Grabe HJ, Teumer A, Volzke H, Petersmann A, John U, Rudan I, Hayward C, Wright AF, Kolcic I, Wright BJ, Thompson JR, Balmforth AJ, Hall AS, Samani NJ, Anderson CA, Ahmad T, Mathew CG, Parkes M, Satsangi J, Caulfield M, Munroe PB, Farrall M, Dominiczak A, Worthington J, Thomson W, Eyre S, Barton A, Mooser V, Francks C, Marchini J. Meta-analysis and imputation refines the association of 15q25 with smoking quantity. *Nat Genet.* 2010; 42(5):436–440. [PubMed: 20418889]
- Loukola A, Broms U, Maunu H, Widen E, Heikkilä K, Siivola M, Salo A, Pergadia ML, Nyman E, Sammalisto S, Perola M, Agrawal A, Heath AC, Martin NG, Madden PA, Peltonen L, Kaprio J. Linkage of nicotine dependence and smoking behavior on 10q, 7q and 11p in twins with homogeneous genetic background. *Pharmacogenomics J.* 2008; 8(3):209–219. [PubMed: 17549066]
- Lumley, T. *rmeta: Meta-analysis, R package version 2.15.* In, pp
- Mague SD, Blendy JA. OPRM1 SNP (A118G): involvement in disease development, treatment response, and animal models. *Drug Alcohol Depend.* 2010; 108(3):172–182. [PubMed: 20074870]
- Mague SD, Isiegas C, Huang P, Liu-Chen LY, Lerman C, Blendy JA. Mouse model of OPRM1 (A118G) polymorphism has sex-specific effects on drug-mediated behavior. *Proceedings of the National Academy of Sciences of the United States of America.* 2009; 106(26):10847–10852. [PubMed: 19528658]
- Maher BS, Vladimirov VI, Latendresse SJ, Thiselton DL, McNamee R, Kang M, Bigdeli TB, Chen X, Riley BP, Hettima JM, Chilcoat H, Heidbreder C, Muglia P, Murrelle EL, Dick DM, Aliev F, Agrawal A, Edenberg HJ, Kramer J, Nurnberger J, Tischfield JA, Devlin B, Ferrell RE, Kirillova GP, Tarter RE, Kendler KS, Vanyukov MM. The AVPR1A gene and substance use disorders: association, replication, and functional evidence. *Biol Psychiatry.* 2011; 70(6):519–527. [PubMed: 21514569]
- McGue M, Keyes M, Sharma A, Elkins I, Legrand L, Johnson W, Iacono WG. The environments of adopted and non-adopted youth: evidence on range restriction from the Sibling Interaction and Behavior Study (SIBS). *Behav Genet.* 2007; 37(3):449–462. [PubMed: 17279339]
- Medland SE, Neale MC. An integrated phenomic approach to multivariate allelic association. *Eur J Hum Genet.* 2010; 18(2):233–239. [PubMed: 19707246]
- Merikangas KR, Stolar M, Stevens DE, Goulet J, Preisig MA, Fenton B, Zhang H, O'Malley SS, Rounsaville BJ. Familial transmission of substance use disorders. *Arch Gen Psychiatry.* 1998; 55(11):973–979. [PubMed: 9819065]

- Miller MB, Basu S, Cunningham J, Eskin E, Malone SM, Oetting WS, Schork N, Sul JH, Iacono WG, McGue M. The Minnesota Center for Twin and Family Research genome-wide association study. *Twin Res Hum Genet.* 2012; 15(6):767–774. [PubMed: 23363460]
- Minnix JA, Robinson JD, Lam CY, Carter BL, Foreman JE, Vandenberg DJ, Tomlinson GE, Wetter DW, Cinciripini PM. The serotonin transporter gene and startle response during nicotine deprivation. *Biol Psychol.* 2011; 86(1):1–8. [PubMed: 20888887]
- Miranda R Jr, Reynolds E, Ray L, Justus A, Knopik VS, McGeary J, Meyerson LA. Preliminary evidence for a gene-environment interaction in predicting alcohol use disorders in adolescents. *Alcohol Clin Exp Res.* 2013; 37(2):325–331. [PubMed: 23136901]
- Munafò MR, Johnstone EC, Aveyard P, Marteau T. Lack of association of OPRM1 genotype and smoking cessation. *Nicotine Tob Res.* 2013; 15(3):739–744. [PubMed: 22990223]
- Neale MC, Harvey E, Maes HH, Sullivan PF, Kendler KS. Extensions to the modeling of initiation and progression: applications to substance use and abuse. *Behav Genet.* 2006; 36(4):507–524. [PubMed: 16770695]
- Nelson EC, Lynskey MT, Heath AC, Wray N, Agrawal A, Shand FL, Henders AK, Wallace L, Todorov AA, Schrage AJ, Madden PA, Degenhardt L, Martin NG, Montgomery GW. Association of OPRD1 polymorphisms with heroin dependence in a large case-control series. *Addict Biol.* 2014; 19(1):111–121. [PubMed: 22500942]
- Nelson EC, Lynskey MT, Heath AC, Wray N, Agrawal A, Shand FL, Henders AK, Wallace L, Todorov AA, Schrage AJ, Saccone NL, Madden PA, Degenhardt L, Martin NG, Montgomery GW, ANKK1, TTC12, and NCAM1 polymorphisms and heroin dependence: importance of considering drug exposure. *JAMA Psychiatry.* 2013; 70(3):325–333. [PubMed: 23303482]
- Nikolov MA, Beltcheva O, Galabova A, Ljubenova A, Jankova E, Gergov G, Russev AA, Lynskey MT, Nelson EC, Nesheva E, Krasteva D, Lazarov P, Mitev VI, Kremensky IM, Kaneva RP, Todorov AA. No evidence of association between 118A>G OPRM1 polymorphism and heroin dependence in a large Bulgarian case-control sample. *Drug Alcohol Depend.* 2011; 117(1):62–65. [PubMed: 21277709]
- Nyholt DR. A simple correction for multiple testing for single-nucleotide polymorphisms in linkage disequilibrium with each other. *Am J Hum Genet.* 2004; 74(4):765–769. [PubMed: 14997420]
- Palmer AA, de Wit H. Translational genetic approaches to substance use disorders: bridging the gap between mice and humans. *Hum Genet.* 2012; 131:931–939. [PubMed: 22170288]
- R Development Core Team. R: A language and environment for statistical computing. Vienna, Austria: R Foundation for Statistical Computing; 2012.
- Ramchandani VA, Umhau J, Pavon FJ, Ruiz-Velasco V, Margas W, Sun H, Damadzic R, Eskay R, Schoor M, Thorsell A, Schwandt ML, Sommer WH, George DT, Parsons LH, Herscovitch P, Hommer D, Heilig M. A genetic determinant of the striatal dopamine response to alcohol in men. *Mol Psychiatry.* 2011; 16(8):809–817. [PubMed: 20479755]
- Ray LA, Barr CS, Blendy JA, Oslin D, Goldman D, Anton RF. The role of the Asn40Asp polymorphism of the mu opioid receptor gene (OPRM1) on alcoholism etiology and treatment: a critical review. *Alcohol Clin Exp Res.* 2012; 36(3):385–394. [PubMed: 21895723]
- Ray LA, Hutchison KE. A polymorphism of the mu-opioid receptor gene (OPRM1) and sensitivity to the effects of alcohol in humans. *Alcohol Clin Exp Res.* 2004; 28(12):1789–1795. [PubMed: 15608594]
- Ray LA, Hutchison KE. Effects of naltrexone on alcohol sensitivity and genetic moderators of medication response: a double-blind placebo-controlled study. *Arch Gen Psychiatry.* 2007; 64(9):1069–1077. [PubMed: 17768272]
- Ray LA, Miranda R Jr, Tidey JW, McGeary JE, MacKillop J, Gwaltney CJ, Rohsenow DJ, Swift RM, Monti PM. Polymorphisms of the mu-opioid receptor and dopamine D4 receptor genes and subjective responses to alcohol in the natural environment. *J Abnorm Psychol.* 2010; 119(1):115–125. [PubMed: 20141248]
- Ray R, Jepson C, Patterson F, Strasser A, Rukstalis M, Perkins K, Lynch KG, O'Malley S, Berrettini WH, Lerman C. Association of OPRM1 A118G variant with the relative reinforcing value of nicotine. *Psychopharmacology (Berl).* 2006; 188(3):355–363. [PubMed: 16960700]

- Ray R, Ruparel K, Newberg A, Wileyto EP, Loughhead JW, Divgi C, Blendy JA, Logan J, Zubieta JK, Lerman C. Human Mu Opioid Receptor (OPRM1 A118G) polymorphism is associated with brain mu-opioid receptor binding potential in smokers. *Proceedings of the National Academy of Sciences of the United States of America*. 2011; 108(22):9268–9273. [PubMed: 21576462]
- Robinson JD, Cinciripini PM, Carter BL, Lam CY, Wetter DW. Facial EMG as an index of affective response to nicotine. *Exp Clin Psychopharmacol*. 2007; 15(4):390–399. [PubMed: 17696686]
- Robinson JD, Lam CY, Carter BL, Minnix JA, Cui Y, Versace F, Wetter DW, Cinciripini PM. A multimodal approach to assessing the impact of nicotine dependence, nicotine abstinence, and craving on negative affect in smokers. *Exp Clin Psychopharmacol*. 2011; 19(1):40–52. [PubMed: 21341922]
- Rouvinen-Lagerstrom N, Lahti J, Alho H, Kovanen L, Aalto M, Partonen T, Silander K, Sinclair D, Raikonen K, Eriksson JG, Palotie A, Koskinen S, Saarikoski ST. mu-Opioid receptor gene (OPRM1) polymorphism A118G: lack of association in Finnish populations with alcohol dependence or alcohol consumption. *Alcohol Alcohol*. 2013; 48(5):519–525. [PubMed: 23729673]
- Saccone NL, Culverhouse RC, Schwantes-An TH, Cannon DS, Chen X, Cichon S, Giegling I, Han S, Han Y, Keskitalo-Vuokko K, Kong X, Landi MT, Ma JZ, Short SE, Stephens SH, Stevens VL, Sun L, Wang Y, Wenzlaff AS, Aggen SH, Breslau N, Broderick P, Chatterjee N, Chen J, Heath AC, Heliövaara M, Hoft NR, Hunter DJ, Jensen MK, Martin NG, Montgomery GW, Niu T, Payne TJ, Peltonen L, Pergadia ML, Rice JP, Sherva R, Spitz MR, Sun J, Wang JC, Weiss RB, Wheeler W, Witt SH, Yang BZ, Caporaso NE, Ehringer MA, Eisen T, Gapstur SM, Gelernter J, Houlston R, Kaprio J, Kendler KS, Kraft P, Leppert MF, Li MD, Madden PA, Nothen MM, Pillai S, Rietschel M, Rujescu D, Schwartz A, Amos CI, Bierut LJ. Multiple Independent Loci at Chromosome 15q25.1 Affect Smoking Quantity: a Meta-Analysis and Comparison with Lung Cancer and COPD. *PLoS Genet*. 2010; 6(8):1001053.
- Saccone NL, Saccone SF, Hinrichs AL, Stitzel JA, Duan W, Pergadia ML, Agrawal A, Breslau N, Gruzca RA, Hatsukami D, Johnson EO, Madden PA, Swan GE, Wang JC, Goate AM, Rice JP, Bierut LJ. Multiple distinct risk loci for nicotine dependence identified by dense coverage of the complete family of nicotinic receptor subunit (CHRN) genes. *Am J Med Genet B Neuropsychiatr Genet*. 2009a; 150B(4):453–466. [PubMed: 19259974]
- Saccone NL, Wang JC, Breslau N, Johnson EO, Hatsukami D, Saccone SF, Gruzca RA, Sun L, Duan W, Budde J, Culverhouse RC, Fox L, Hinrichs AL, Steinbach JH, Wu M, Rice JP, Goate AM, Bierut LJ. The CHRNA5-CHRNA3-CHRNA4 nicotinic receptor subunit gene cluster affects risk for nicotine dependence in African-Americans and in European-Americans. *Cancer Res*. 2009b; 69(17):6848–6856. [PubMed: 19706762]
- Saccone SF, Pergadia ML, Loukola A, Broms U, Montgomery GW, Wang JC, Agrawal A, Dick DM, Heath AC, Todorov AA, Maunu H, Heikkilä K, Morley KI, Rice JP, Todd RD, Kaprio J, Peltonen L, Martin NG, Goate AM, Madden PA. Genetic linkage to chromosome 22q12 for a heavy-smoking quantitative trait in two independent samples. *Am J Hum Genet*. 2007; 80(5):856–866. [PubMed: 17436240]
- Sander T, Gscheidel N, Wendel B, Samochowiec J, Smolka M, Rommelspacher H, Schmidt LG, Hoehe MR. Human mu-opioid receptor variation and alcohol dependence. *Alcohol Clin Exp Res*. 1998; 22(9):2108–2110. [PubMed: 9884158]
- Schinka JA, Town T, Abdullah L, Crawford FC, Ordorica PI, Francis E, Hughes P, Graves AB, Mortimer JA, Mullan M. A functional polymorphism within the mu-opioid receptor gene and risk for abuse of alcohol and other substances. *Mol Psychiatry*. 2002; 7(2):224–228. [PubMed: 11840318]
- Stallings MC, Corley RP, Dennehey B, Hewitt JK, Krauter KS, Lessem JM, Mikulich-Gilbertson SK, Rhee SH, Smolen A, Young SE, Crowley TJ. A genome-wide search for quantitative trait loci that influence antisocial drug dependence in adolescence. *Arch Gen Psychiatry*. 2005; 62(9):1042–1051. [PubMed: 16143736]
- Stallings MC, Corley RP, Hewitt JK, Krauter KS, Lessem JM, Mikulich SK, Rhee SH, Smolen A, Young SE, Crowley TJ. A genome-wide search for quantitative trait loci influencing substance dependence vulnerability in adolescence. *Drug Alcohol Depend*. 2003; 70(3):295–307. [PubMed: 12757967]

- Swan GE, Carmelli D, Cardon LR. Heavy consumption of cigarettes, alcohol and coffee in male twins. *J Stud Alcohol*. 1997; 58(2):182–190. [PubMed: 9065896]
- Tan EC, Tan CH, Karupathivan U, Yap EP. Mu opioid receptor gene polymorphisms and heroin dependence in Asian populations. *Neuroreport*. 2003; 14(4):569–572. [PubMed: 12657887]
- The Tobacco Genetics Consortium. Genome-wide meta-analyses identify multiple loci associated with smoking behavior. *Nat Genet*. 2010; 42(5):441–447. [PubMed: 20418890]
- Thorgeirsson TE, Gudbjartsson DF, Surakka I, Vink JM, Amin N, Geller F, Sulem P, Rafnar T, Esko T, Walter S, Gieger C, Rawal R, Mangino M, Prokopenko I, Magi R, Keskitalo K, Gudjonsdottir IH, Gretarsdottir S, Stefansson H, Thompson JR, Aulchenko YS, Nelis M, Aben KK, den Heijer M, Dirksen A, Ashraf H, Soranzo N, Valdes AM, Steves C, Uitterlinden AG, Hofman A, Tonjes A, Kovacs P, Hottenga JJ, Willemsen G, Vogelzangs N, Doring A, Dahmen N, Nitz B, Pergadia ML, Saez B, De Diego V, Lezcano V, Garcia-Prats MD, Ripatti S, Perola M, Kettunen J, Hartikainen AL, Pouta A, Laitinen J, Isohanni M, Huei-Yi S, Allen M, Krestyaninova M, Hall AS, Jones GT, van Rij AM, Mueller T, Dieplinger B, Haltmayer M, Jonsson S, Matthiasson SE, Oskarsson H, Tyrfinngsson T, Kiemeny LA, Mayordomo JI, Lindholt JS, Pedersen JH, Franklin WA, Wolf H, Montgomery GW, Heath AC, Martin NG, Madden PA, Giegling I, Rujescu D, Jarvelin MR, Salomaa V, Stumvoll M, Spector TD, Wichmann HE, Metspalu A, Samani NJ, Penninx BW, Oostra BA, Boomsma DI, Tiemeier H, van Duijn CM, Kaprio J, Gulcher JR, McCarthy MI, Peltonen L, Thorsteinsdottir U, Stefansson K. Sequence variants at *CHRNA3-CHRNA6* and *CYP2A6* affect smoking behavior. *Nat Genet*. 2010; 42(5):448–453. [PubMed: 20418888]
- Town T, Abdullah L, Crawford F, Schinka J, Ordorica PI, Francis E, Hughes P, Duara R, Mullan M. Association of a functional mu-opioid receptor allele (+118A) with alcohol dependency. *American journal of medical genetics*. 1999; 88(5):458–461. [PubMed: 10490697]
- Treutlein J, Cichon S, Ridinger M, Wodarz N, Soyka M, Zill P, Maier W, Moessner R, Gaebel W, Dahmen N, Fehr C, Scherbaum N, Steffens M, Ludwig KU, Frank J, Wichmann HE, Schreiber S, Dragano N, Sommer WH, Leonardi-Essmann F, Lourdasamy A, Gebicke-Haerter P, Wienker TF, Sullivan PF, Nothen MM, Kiefer F, Spanagel R, Mann K, Rietschel M. Genome-wide association study of alcohol dependence. *Arch Gen Psychiatry*. 2009; 66(7):773–784. [PubMed: 19581569]
- Tsuang MT, Lyons MJ, Meyer JM, Doyle T, Eisen SA, Goldberg J, True W, Lin N, Toomey R, Eaves L. Co-occurrence of abuse of different drugs in men: the role of drug-specific and shared vulnerabilities. *Arch Gen Psychiatry*. 1998; 55(11):967–972. [PubMed: 9819064]
- Van den Oord EJ, Rujescu D, Robles JR, Giegling I, Birrell C, Bukszar J, Murrelle L, Moller HJ, Middleton L, Muglia P. Factor structure and external validity of the PANSS revisited. *Schizophr Res*. 2006; 82(2–3):213–223. [PubMed: 16229988]
- Vanyukov MM, Tarter RE, Kirillova GP, Kirisci L, Reynolds MD, Kreek MJ, Conway KP, Maher BS, Iacono WG, Bierut L, Neale MC, Clark DB, Ridenour TA. Common liability to addiction and "gateway hypothesis": theoretical, empirical and evolutionary perspective. *Drug Alcohol Depend*. 2012; 123(Suppl 1):3–17.
- Vanyukov MM, Tarter RE, Kirisci L, Kirillova GP, Maher BS, Clark DB. Liability to substance use disorders: 1. Common mechanisms and manifestations. *Neurosci Biobehav Rev*. 2003; 27(6): 507–515. [PubMed: 14599432]
- Wang YJ, Huang P, Blendy JA, Liu-Chen LY. Brain region- and sex-specific alterations in DAMGO-stimulated [(35) S]GTPgammaS binding in mice with *Oprm1* A112G. *Addict Biol*. 2014; 19(3): 354–361. [PubMed: 22862850]
- Wang YJ, Huang P, Ung A, Blendy JA, Liu-Chen LY. Reduced expression of the mu opioid receptor in some, but not all, brain regions in mice with *OPRM1* A112G. *Neuroscience*. 2012; 205:178–184. [PubMed: 22240251]
- Weiss RB, Baker TB, Cannon DS, von Niederhausern A, Dunn DM, Matsunami N, Singh NA, Baird L, Coon H, McMahon WM, Piper ME, Fiore MC, Scholand MB, Connett JE, Kanner RE, Gahring LC, Rogers SW, Hoidal JR, Leppert MF. A candidate gene approach identifies the *CHRNA5-A3-B4* region as a risk factor for age-dependent nicotine addiction. *PLoS Genet*. 2008; 4(7):1000125.

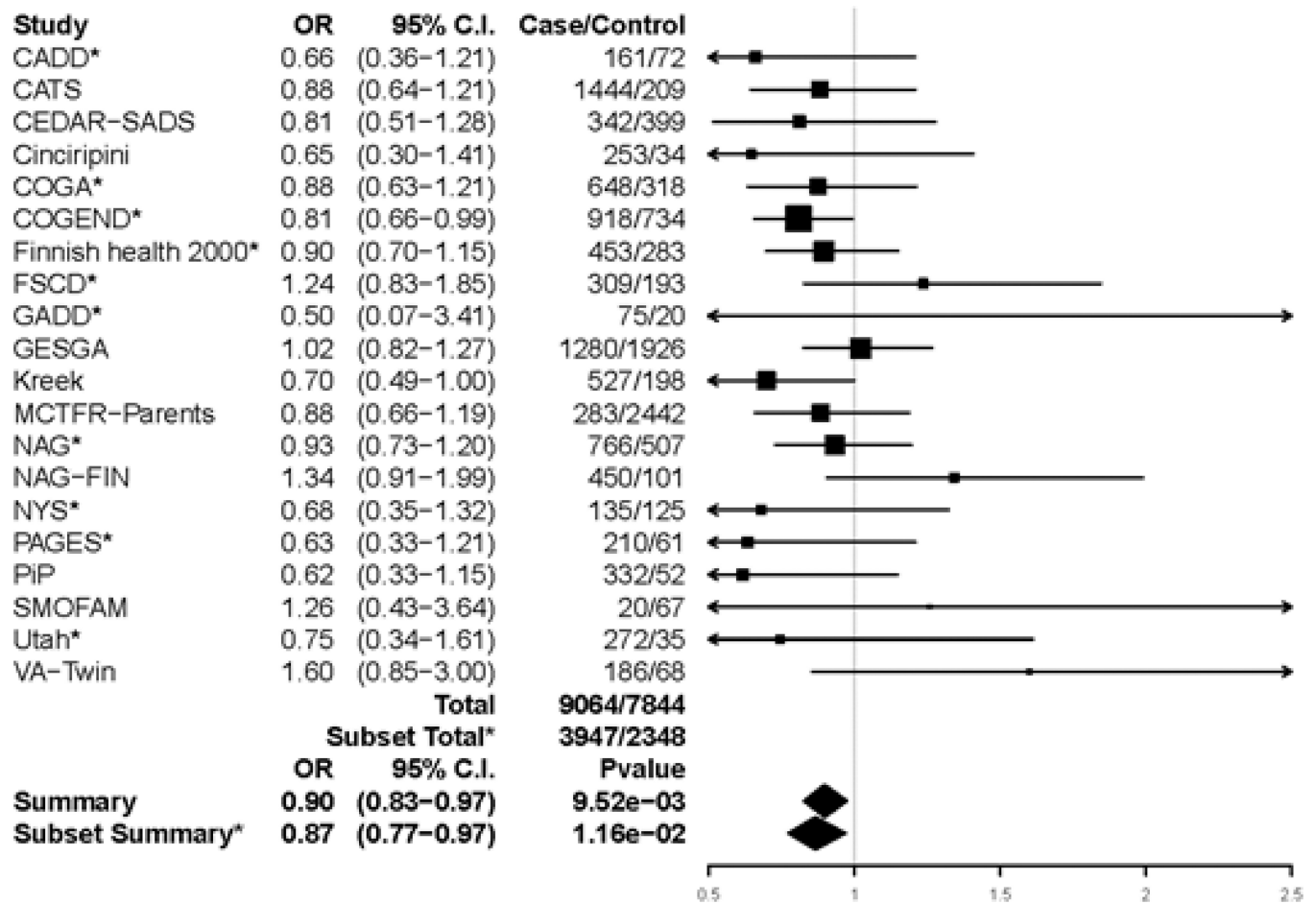
- Wetherill L, Agrawal A, Kapoor M, Bertelsen S, Bierut LJ, Brooks A, Dick D, Hesselbrock M, Hesselbrock V, Koller DL, Le N, Nurnberger JI Jr, Salvatore JE, Schuckit M, Tischfield JA, Wang JC, Xuei X, Edenberg HJ, Porjesz B, Bucholz K, Goate AM, Foroud T. Association of substance dependence phenotypes in the COGA sample. *Addict Biol.* 2015; 20(3):617–627. [PubMed: 24832863]
- Xuei X, Flury-Wetherill L, Bierut L, Dick D, Nurnberger J Jr, Foroud T, Edenberg HJ. The opioid system in alcohol and drug dependence: family-based association study. *Am J Med Genet B Neuropsychiatr Genet.* 2007; 144B(7):877–884. [PubMed: 17503481]
- Zhang H, Luo X, Kranzler HR, Lappalainen J, Yang BZ, Krupitsky E, Zvartau E, Gelernter J. Association between two mu-opioid receptor gene (OPRM1) haplotype blocks and drug or alcohol dependence. *Hum Mol Genet.* 2006a; 15(6):807–819. [PubMed: 16476706]
- Zhang L, Kendler KS, Chen X. The mu-opioid receptor gene and smoking initiation and nicotine dependence. *Behav Brain Funct.* 2006b:228.
- Zhang Y, Wang D, Johnson AD, Papp AC, Sadee W. Allelic expression imbalance of human mu opioid receptor (OPRM1) caused by variant A118G. *The Journal of biological chemistry.* 2005; 280(38):32618–32624. [PubMed: 16046395]



**Figure 1.**

Forest plot of general substance dependence and rs1799971 across studies that had at least 5 cases and 5 controls. Summary odds ratio, 95% Confidence Interval, and p-values are based on fixed effect meta-analysis. \*indicates the subset of 10 studies that had all five specific substance dependence diagnoses, examined in secondary analyses to confirm consistency of results. Estimated heterogeneity variance was  $Q = 20.13$  with a p-value of 0.387 among all 20 studies and  $Q = 6.49$  with a p-value of 0.69 among the subset of 10 studies.





**Figure 2.**

Forest plot of general substance dependence and rs1799971 across studies that had at least 5 cases and 5 controls. Summary odds ratio, 95% Confidence Interval, and p-values are based on fixed effect meta-analysis. \*indicates the subset of 10 studies that had all five specific substance dependence diagnoses, examined in secondary analyses to confirm consistency of results. Estimated heterogeneity variance was  $Q = 20.13$  with a p-value of 0.387 among all 20 studies and  $Q = 6.49$  with a p-value of 0.69 among the subset of 10 studies.

Study descriptions: sample sizes, G (minor) allele frequencies (overall, in general dependence cases, in general dependence controls), proportions of male participants, and age distribution (minimum, first quartile, median, third quartile, and maximum) of each study.

Table 1

Study	Total N	G-allele-freq	Case G-allele-freq	Control G-allele-freq	proport-male	age min	age q1	age_med	age_q3	age_max
BG <sup>a</sup>	3999	0.14	0.13	0.17	0.83	18	25	28	30	58
CADD <sup>b</sup>	409	0.13	0.12	0.18	0.56	12	21	28	47	72
CATS <sup>c</sup>	1748	0.12	0.12	0.13	0.57	18	29	36	43	65
CEDAR-SADS <sup>d</sup>	747	0.12	0.12	0.12	0.35	14	18	37	42	65
Cinciripini <sup>e</sup>	627	0.11	0.09	0.15	0.48	18	33	42	50	74
COGA <sup>f</sup>	1024	0.12	0.11	0.13	0.46	18	36	43	51	77
COGEN <sup>g</sup>	2024	0.13	0.13	0.15	0.61	25	32	37	41	65
Finnish Health 2000 <sup>h</sup>	1025	0.21	0.20	0.22	0.8	30	37	46	54	87
FSCD <sup>i</sup>	558	0.13	0.13	0.10	0.5	18	25	34	40	54
FT12 <sup>j</sup>	617	0.22	0.22	0.13	0.48	20	22	22	23	27
GADD <sup>k</sup>	281	0.12	0.13	0.15	0.57	12	15	16	19	61
GESGA <sup>l</sup>	3501	0.12	0.11	0.11	0.65	18	39	47	56	84
Kreek <sup>m</sup>	750	0.11	0.10	0.13	0.59	17	31	43	52	82
MCTPR-Parents <sup>n</sup>	3842	0.11	0.10	0.11	0.46	30	43	46	50	72
NAG-AUS <sup>o</sup>	1281	0.12	0.12	0.12	0.59	18	36	43	50	82
NAG-FIN <sup>p</sup>	879	0.21	0.21	0.11	0.7	42	52	55	58	77
NYS <sup>q</sup>	552	0.1	0.07	0.10	0.49	35	37	39	41	44
OYSUP <sup>r</sup>	357	0.13	0.13	0.13	0.5	20	21	21	21	23
PAGES <sup>s</sup>	409	0.11	0.11	0.11	0.68	17	27	37	45	68
PIP <sup>t</sup>	809	0.11	0.11	0.15	0.48	18	35	43	53	79
ROMA <sup>u</sup>	732	0.21	0.16	0.38	0.83	18	25	28	32	53

Study	Total N	G-allele- freq	Case G- allele- freq	Control G- allele- freq	proport- male	age min	age_q1	age_med	age_q3	age_max
SMOFAM <sup>y</sup>	166	0.12	0.18	0.12	0.63	26	27	29	30	62
Utah <sup>w</sup>	463	0.13	0.12	0.14	0.59	25	54	61	67	86
VA-Twin <sup>x</sup>	672	0.12	0.15	0.10	0.32	21	30	38	46	58
Yale-Penn. <sup>y</sup>	1217	0.12			0.41	16	30	39	46	72
<b>Total</b>	<b>28689</b>	<b>(0.10-0.22)</b>			<b>(0.32-0.83)</b>	<b>(12-42)</b>	<b>(15-54)</b>	<b>(16-61)</b>	<b>(19-67)</b>	<b>(23-87)</b>

**References:**

- <sup>a</sup> (Nikolov et al. 2011);
- <sup>b</sup> (Stallings et al. 2005; Stallings et al. 2003);
- <sup>c</sup> (Nelson et al. 2014; Nelson et al. 2013);
- <sup>d</sup> (Maher et al. 2011);
- <sup>e</sup> (Carter et al. 2008; Cinciripini et al. 2006; Cinciripini et al. 2005; Lam et al. 2012; Minnix et al. 2011; Robinson et al. 2007; Robinson et al. 2011);
- <sup>f</sup> (Edenberg 2002; Edenberg et al. 2010);
- <sup>g</sup> (Saccone et al. 2009a; Saccone et al. 2009b);
- <sup>h</sup> (Aromaa and Koskinen 2004; Rouvinen-Lagerstrom et al. 2013);
- <sup>i</sup> (Bierut et al. 2010; Bierut et al. 2008);
- <sup>j</sup> (Broms et al. 2012; Kaprio et al. 2002);
- <sup>k</sup> (Kamens et al. 2013);
- <sup>l</sup> (Frank et al. 2012; Treutlein et al. 2009);
- <sup>m</sup> (Levrán et al. 2008);
- <sup>n</sup> (Iacono et al. 1999; Keyes et al. 2009; McGue et al. 2007; Miller et al. 2012);
- <sup>o</sup> (Loukola et al. 2008; Saccone et al. 2007);
- <sup>p</sup> (Loukola et al. 2008);
- <sup>q</sup> (Elliott et al. 1985; Elliott et al. 1989; Hofst et al. 2009);

Author Manuscript

Author Manuscript

Author Manuscript

Author Manuscript

- <sup>r</sup>(Andrews et al. 2003);
- <sup>s</sup>(Van den Oord et al. 2006);
- <sup>t</sup>(David et al. 2011);
- <sup>u</sup>(Nikolov et al. 2011);
- <sup>v</sup>(Hops et al. 2000);
- <sup>w</sup>(Weiss et al. 2008);
- <sup>x</sup>(Chen et al. 2009; Kendler et al. 2007; Zhang et al. 2006b);
- <sup>y</sup>(Gelernter et al. 2014; Gelernter et al. 2013a; Gelernter et al. 2013b)

Table 2

Numbers of cases, total controls, and controls with exposure to each substance. These numbers were based on a filtered sample that removed participants not exposed to alcohol, and participants who are less than 25 years of age and have with no dependence to any assessed substances. NA indicates that the substance was not assessed in the study.

Datasets	Alcohol			Cigarettes Per Day (CPD)			Cannabis			Cocaine			Opioid			General Substance Dependence			
	Cases	Total Controls	Heavy Smokers	Total Controls	Exposed Controls	Cases	Total Controls	Exposed Controls	Cases	Total Controls	Exposed Controls	Cases	Total Controls	Exposed Controls	Cases	Total Controls	Exposed Controls	Cases	Total Controls
<b>BG</b>	277	1278	1449	4	4	NA	NA	NA	NA	NA	NA	NA	NA	NA	NA	NA	NA	948	3
<b>CADD</b>	93	264	54	109	57	72	285	218	35	306	141	6	351	106	161	72	72	161	72
<b>CATS</b>	651	1032	NA	NA	NA	857	831	765	416	1272	875	1259	429	102	1444	209	209	1444	209
<b>CEDAR-SADS</b>	179	562	NA	NA	NA	255	486	338	86	655	263	114	627	418	342	399	399	342	399
<b>Cinciripini</b>	NA	NA	253	34	NA	NA	NA	NA	NA	NA	NA	NA	NA	NA	253	34	34	253	34
<b>COGA</b>	612	410	242	483	140	196	823	475	224	795	204	86	933	193	648	318	318	648	318
<b>COGEND</b>	463	1529	584	935	923	192	1808	1543	132	1871	560	34	1970	191	918	734	734	918	734
<b>Finnish Health 2000</b>	417	512	89	463	180	3	1011	0	0	1014	0	2	1012	0	453	283	283	453	283
<b>FSCD</b>	280	230	124	276	58	170	340	213	237	273	55	81	429	100	309	193	193	309	193
<b>FT12</b>	93	470	198	15	15	NA	NA	NA	NA	NA	NA	NA	NA	NA	251	0	0	251	0
<b>GADD</b>	43	110	11	57	NA	45	108	78	9	144	29	NA	153	35	75	20	20	75	20
<b>GESGA</b>	1333	1933	NA	NA	NA	NA	NA	NA	NA	NA	NA	NA	NA	NA	1280	1926	1926	1280	1926
<b>Kreek</b>	42	684	NA	NA	NA	NA	NA	NA	82	644	41	528	198	NA	527	198	198	527	198
<b>MCTFR-Parents</b>	226	2504	NA	NA	NA	93	2637	1637	37	2695	452	12	2722	125	283	2442	2442	283	2442
<b>NAG-AUS</b>	359	972	737	594	102	79	1249	694	5	1322	74	17	1310	137	766	507	507	766	507
<b>NAG-FIN</b>	221	513	354	115	115	NA	NA	NA	NA	NA	NA	NA	NA	NA	450	101	101	450	101
<b>NYS</b>	65	466	71	135	63	25	508	368	26	507	157	1	532	86	135	125	125	135	125
<b>OYSUP</b>	All participants were under 25 years of age																		
<b>PAGES</b>	64	335	132	83	40	77	320	160	7	391	67	8	390	30	210	61	61	210	61
<b>PIP</b>	NA	NA	347	54	NA	NA	NA	NA	NA	NA	NA	NA	NA	NA	332	52	52	332	52
<b>ROMA</b>	18	240	209	7	6	NA	NA	NA	NA	NA	NA	NA	NA	NA	177	4	4	177	4
<b>SMOFAM</b>	NA	NA	20	67	34	NA	NA	NA	NA	NA	NA	NA	NA	NA	20	67	67	20	67

Datasets	Alcohol		Cigarettes Per Day (CPD)			Cannabis			Cocaine			Opioid			General Substance Dependence	
	Cases	Total Controls	Heavy Smokers	Total Controls	Exposed Controls	Cases	Total Controls	Exposed Controls	Cases	Total Controls	Exposed Controls	Cases	Total Controls	Exposed Controls	Cases	Controls
Utah	112	283	235	60	60	36	359	88	16	379	34	9	386	9	272	35
VA-Twin	NA	NA	193	70	NA	NA	NA	NA	NA	NA	NA	NA	NA	NA	186	68
Yale-Penn	799	208	1094	113	NA	397	566	500	911	259	167	703	478	214	1208	3
<b>Total</b>	<b>6347</b>	<b>14535</b>	<b>6396</b>	<b>3674</b>	<b>1797</b>	<b>2497</b>	<b>11331</b>	<b>7077</b>	<b>2223</b>	<b>12527</b>	<b>3119</b>	<b>2860</b>	<b>11920</b>	<b>1746</b>	<b>11648</b>	<b>7834</b>

**Table 3**

Summary of the effect of rs1799971 on general substance dependence.

Model	Cases	Controls	Cochrane's Q	Q-Pvalue	Odds Ratio	L95%-U95%
<b>Gen-Dep = age sex rs1799971</b>	9064	7844	20.13	0.387	0.90	0.83–0.97
<b>Alcohol = age sex rs1799971</b>	5086	7623	12.08	0.672	0.92	0.83–1.01
<b>Nicotine = age sex rs1799971</b>	3358	2670	16.84	0.265	0.93	0.83–1.05
<b>Cannabis = age sex rs1799971</b>	2077	5115	7.63	0.746	0.83	0.71–0.98
<b>Cocaine = age sex rs1799971</b>	1307	5313	7.68	0.809	0.87	0.73–1.04
<b>Opioid = age sex rs1799971</b>	2139	5168	7.87	0.641	0.84	0.70–1.00

Model column shows what outcome phenotype was tested for each model. Gen-Dep denotes general substance dependence. Each substance denotes the subsets of general substance dependence that were tested in interpretative phase of the analysis. All effects shows are fixed effect estimates. Controls were filtered for age and exposure to alcohol.

Summary of the effect of rs1799971 on specific substance dependence diagnoses in 9 studies that assessed all five substance dependence diagnoses and exposures.

**Table 4**

Ordinal Logistic Regression Results							
Substance	Cases	Controls	Cochrane's Q	Q-Pvalue	Odds Ratio	L.95%-U.95%	OR-Pvalue
Alcohol	2031	3361	8.90	0.351	0.90	0.76–1.06	0.218
Nicotine	2718	2674	7.78	0.455	0.89	0.74–1.07	0.216
Cannabis	839	4553	10.76	0.216	0.91	0.73–1.14	0.420
Cocaine	992	4085	0.86	0.990	0.92	0.69–1.24	0.593
Opioid	607	4274	3.12	0.682	0.91	0.65–1.27	0.577
Traditional Logistic Regression Results (Dependence as outcome variable)							
Alcohol	2051	3430	10.66	0.222	0.88	0.76–1.02	0.974
Nicotine	2066	1412	8.69	0.276	0.91	0.76–1.08	0.267
Cannabis	861	3036	9.08	0.336	0.90	0.74–1.09	0.283
Cocaine	1011	899	0.85	0.997	0.91	0.70–1.19	0.492
Opioid	600	577	2.31	0.679	0.91	0.67–1.24	0.547

Substance column shows the tested outcome phenotype. All effects shows are fixed effect estimates. In the traditional logistic regression results, controls were required to be exposed each tested substance, in addition to meeting the previously applied filters for age and exposure to alcohol.