

Published in final edited form as:

*Diabetologia*. 2014 October ; 57(10): 2066–2075. doi:10.1007/s00125-014-3311-z.

## ***Mig6* haploinsufficiency protects mice against streptozotocin-induced diabetes**

Yi-Chun Chen<sup>1</sup>, E. Scott Colvin<sup>2,3</sup>, Katherine E. Griffin<sup>2,3</sup>, Bernhard F. Maier<sup>2,3</sup>, and Patrick T. Fueger<sup>1,2,3</sup>

<sup>1</sup>Department of Cellular & Integrative Physiology, Indiana University School of Medicine, Indianapolis, IN 46202, USA

<sup>2</sup>Herman B. Wells Center for Pediatric Research, Indiana University School of Medicine, 635 Barnhill Drive, MS 2031, Indianapolis, IN 46202, USA

<sup>3</sup>Department of Pediatrics, Indiana University School of Medicine, Indianapolis, IN, 46202, USA

### **Abstract**

**Aims/hypothesis**—EGF and gastrin co-administration reverses type 1 diabetes in rodent models. However, the failure of this to translate into a clinical treatment suggests that EGF-mediated tissue repair is a complicated process and warrants further investigation. Thus, we aimed to determine whether EGF receptor (EGFR) feedback inhibition by mitogen-inducible gene 6 protein (MIG6) limits the effectiveness of EGF therapy and promotes type 1 diabetes development.

**Methods**—We treated *Mig6* (also known as *Errfi1*) haploinsufficient mice (*Mig6*<sup>+/-</sup>) and their wild-type littermates (*Mig6*<sup>+/+</sup>) with multiple low doses of streptozotocin (STZ), and monitored diabetes development via glucose homeostasis tests and histological analyses. We also investigated MIG6-mediated cytokine-induced desensitisation of EGFR signalling and the DNA damage repair response in 832/13 INS-1 beta cells.

**Results**—Whereas STZ-treated *Mig6*<sup>+/+</sup> mice became diabetic, STZ-treated *Mig6*<sup>+/-</sup> mice remained glucose tolerant. In addition, STZ-treated *Mig6*<sup>+/-</sup> mice exhibited preserved circulating insulin levels following a glucose challenge. As insulin sensitivity was similar between *Mig6*<sup>+/-</sup> and *Mig6*<sup>+/+</sup> mice, the preserved glucose tolerance in STZ-treated *Mig6*<sup>+/-</sup> mice probably results from preserved beta cell function. This is supported by elevated *Pdx1* and *Irs2* mRNA levels in islets isolated from STZ-treated *Mig6*<sup>+/-</sup> mice. Conversely, MIG6 overexpression in isolated islets compromises glucose-stimulated insulin secretion. Studies in 832/13 cells suggested that cytokine-

---

Corresponding author: Patrick T. Fueger, pfueger@iu.edu, Herman B. Wells Center for Pediatric Research, Indiana University School of Medicine, 635 Barnhill Drive, MS 2031, Indianapolis, IN 46202, USA.

#### **Duality of interest**

The authors declare that there is no duality of interest associated with this manuscript.

#### **Contribution statement**

YCC conceived the experimental design, acquired, analysed, and interpreted the data, and wrote the manuscript. ESC acquired, analysed and interpreted the data. KEG acquired and analysed the data. BFM conceived the experimental design and interpreted the data. PTF conceived the experimental design, analysed and interpreted the data, wrote the manuscript, and is the guarantor of the work. All authors reviewed the manuscript and gave final approval of the version to be published.

induced MIG6 hinders EGFR activation and inhibits EGF-mediated DNA damage repair. STZ-treated *Mig6*<sup>+/-</sup> mice also have increased beta cell mass recovery.

**Conclusions/interpretation**—Reducing *Mig6* expression promotes beta cell repair and abates the development of experimental diabetes, suggesting that MIG6 may be a novel therapeutic target for preserving beta cells.

### Keywords

Cytokines; EGFR; *ERRF1*; Islets; *Mig6*; Type 1 diabetes

## Introduction

Type 1 diabetes is a progressive disease characterised by the autoimmune-mediated destruction of insulin-secreting pancreatic beta cells [1]. To prevent or cure type 1 diabetes, research efforts, particularly clinical trials, have largely focused on understanding and modulating immunological responses. Unfortunately, immunomodulatory therapies have not proven to have long-term efficacy [2]. Therefore, cellular therapies promoting the recovery and survival of beta cells could provide efficacious alternative treatments for type 1 diabetes [3, 4]. The clinical phenomenon of the ‘honeymoon phase’ (i.e. the remission period that often occurs in newly diagnosed type 1 diabetes patients after initiation of insulin therapy) suggests that human beta cells have a finite potential to recover from assaults [5, 6]. This notion is supported by several rodent model studies [7–9]. In addition, beta cell recovery and survival capacity may be enhanced in vivo by introducing trophic factors. For example, EGF and gastrin cotreatment has been shown to prevent or reverse diabetes development in various rodent models. However, translating this therapy to human diabetes is limited because of our inadequate understanding of the molecular mechanism of EGF’s glucose-lowering function. In the current study, we aimed to investigate whether EGF receptor (EGFR) signalling in beta cells is compromised by endogenous EGFR feedback inhibition, and whether such inhibition modulates functional beta cell mass recovery in a model of beta cell destruction.

As an initiator of diverse intracellular programmes, the EGFR signalling cascade is fine-tuned by multiple feedback regulators, including mitogen-inducible gene 6 protein (MIG6). Following EGFR activation by ligand binding and dimerisation, MIG6 is rapidly induced to: (1) suppress EGFR kinase activity; and (2) facilitate EGFR endocytosis and degradation [10–13]. Interestingly, MIG6 expression is also induced by (patho)physiological stress stimuli, suggesting that MIG6 possibly integrates stress responses and growth factor signalling to maintain tissue homeostasis [14–16]. In response to chronic stress, however, sustained MIG6 upregulation could have pathological consequences. In fact, we have shown that glucocorticoids and endoplasmic reticulum stress upregulate MIG6 in pancreatic beta cells, leading to cell cycle arrest and apoptosis, respectively [17, 18]. Thus, MIG6 may promote a reduction in beta cell mass by antagonising EGFR signalling.

As beta cell fate dictates progression to diabetes, it is essential to determine whether stress-inducible MIG6 promotes beta cell dysfunction and destruction by attenuating EGFR signalling. In the present study, we investigated the extent to which *Mig6*

haploinsufficiency, and hence heightened EGFR signalling protects mice against diabetes development. To this end, we treated wild-type and *Mig6* heterozygous knockout mice with multiple low-dose streptozotocin (MLD-STZ) to induce beta cell death and an immune response that mimics human type 1 diabetes. We then performed metabolic assessments and morphological analyses. We also used rat islets and 832/13 INS-1-derived beta cells to investigate the MIG6-mediated molecular signalling events associated with beta cell dysfunction and destruction in the type 1 diabetes milieu.

## Methods

### Animals and treatments

All animals were maintained and used according to protocols approved by the Indiana University School of Medicine Institutional Animal Care and Use Committee. C57Bl/6J mice lacking one *Mig6* allele (*Mig6*<sup>+/-</sup>) were obtained from G. Vande Woude (Van Andel Research Institute, Grand Rapids, MI, USA), bred with wild-type C57Bl/6J mice (*Mig6*<sup>+/+</sup>), and genotyped as previously described [19]. An Extract-N-Amp Tissue PCR kit (Sigma-Aldrich, St Louis, MO, USA) was used for genotyping. Mice were maintained in a standard light-dark cycle and provided with free access to water and a standard rodent chow diet.

Ten-week-old male mice of both genotypes were intraperitoneally injected with STZ (35 mg/kg body weight; Sigma-Aldrich) for 5 consecutive days. A group of control animals was injected in the same manner with vehicle (saline).

### Metabolic tests

For glucose tolerance testing (GTT), 1.5 g/kg body weight D-glucose (Sigma-Aldrich) was intraperitoneally injected into 5 h-fasted control or STZ-treated mice. Blood was sampled from a tail vein at the indicated time points, and blood glucose was measured using an AlphaTRAK glucometer (Abbott Laboratories, Abbott Park, IL, USA). Serum insulin was assayed using an ultrasensitive mouse insulin ELISA kit (Crystal Chem, Downers Grove, IL, USA). For insulin tolerance testing (ITT), 0.75 U/kg body weight recombinant insulin (Eli Lilly, Indianapolis, IN) was intraperitoneally injected into 5 h-fasted untreated and STZ-treated mice. Blood glucose was determined at the indicated time points.

### Histological studies

Immunostaining of pancreatic sections was performed as previously described [18]. Insulinitis scoring was performed by grading islets as follows: 0, no infiltration; 1, mild peri-insular mononuclear infiltration; 2, moderate (25–50%) infiltration; and 3, massive (>50%) infiltration [20]. Antibodies are listed in electronic supplementary material (ESM) Table 1.

### Islet experiments

Cadaveric human islets were obtained from Beta-Pro LLC (Charlottesville, VA, USA), the National Disease Research Interchange (Philadelphia, PA, USA), or the Integrated Islet Distribution Program (Duarte, CA, USA). Islets from four healthy donors were treated with a proinflammatory cytokine cocktail (50 U/ml IL-1 $\beta$ , 1000 U/ml TNF- $\alpha$ , and 1000 U/ml IFN- $\gamma$  (Prospec, East Brunswick, NJ) for 24 h in DMEM containing 5.5 mmol/l glucose.

Mouse and rat pancreatic islets were isolated and cultured as previously described [17]. Immediately after isolation, rat islets were transduced with adenoviral vectors expressing MIG6 or green fluorescent protein (GFP) under the control of the cytomegalovirus (CMV) promoter. Glucose-stimulated insulin secretion (GSIS) assays were performed 48 h post-transduction, as previously described [21]. Insulin content of the buffer was determined using an insulin RIA (Coat-A-Count Insulin RIA, Siemens Medical Solutions, Malvern, PA, USA), and data were normalised to total islet protein concentration.

Groups of 50 islets from *Mig6*<sup>+/+</sup> or *Mig6*<sup>+/-</sup> mice were cultured for 24 h in 100  $\mu$ l RPMI with or without the cytokine cocktail. Nitrate and nitrite concentrations in cell supernatants were then assayed as an index of nitric oxide (NO) using the Griess assay (Promega, Madison, WI, USA) according to the manufacturer's protocol [22].

### Cell experiments

INS-1-derived 832/13 rat insulinoma cells were cultured as previously described [23]. A starvation medium (RPMI 1640 containing 2.5 mmol/l glucose and 0.1% BSA) was used for EGF stimulation experiments. Gene overexpression and knockdown were performed as previously described [18].

For cytokine plus EGF stimulation experiments, 832/13 cells were pretreated with cytokines for 6 h, starved for 2 h and treated with 10 ng/ml rat recombinant EGF (R&D Systems, Minneapolis, MN, USA) for 5 min. For apoptosis experiments, 832/13 cells were treated with 1  $\mu$ mol/l doxorubicin (Adriamycin) or camptothecin (CA; BioVision, Mountain View, CA, USA) for 6 h.

### Immunoblot analysis

Immunoblot analysis was performed as previously described [18]. Phosphorylated protein levels were normalised to total protein levels, and total (i.e. nonphosphorylated) protein levels were normalised to tubulin or GAPDH protein levels. Antibodies are listed in ESM Table 2.

### Quantitative RT-PCR analysis

RNA from 832/13 cells, and mouse, rat, and human islets was isolated using RNeasy Mini or Micro kits (Qiagen, Valencia, CA, USA). Reverse transcription was performed using a High Capacity cDNA Reverse Transcription kit (Applied Biosystems, Foster City, CA, USA). Threshold cycle methodology was used to calculate the relative quantities of *Mig6*, *Pdx-1*, *Ins1/2*, *Irs2* (TaqMan assays, Applied Biosystems), and proinsulin (*Ins2*; SYBR Green methodology, Life Technologies, Grand Island, NY, USA) mRNA. Primer sequences were described previously [24]. PCR reactions were performed in triplicate for each sample from at least three independent experiments and normalised to *Gapdh* or *Actb* mRNA levels.

### Statistical analysis

All data are presented as means  $\pm$  SEM. Protein and mRNA data were normalized to control conditions and presented as relative expression. The Student's *t* test, Pearson correlation or ANOVA (with Bonferroni post hoc tests) were performed using GraphPad

Prism software (La Jolla, CA, USA) to detect statistical differences.  $p < 0.05$  was considered statistically significant.

## Results

### Mig6 is induced by proinflammatory cytokines

Originally characterised as an immediate-early response gene [25], *Mig6* is induced by various growth factors and cellular stress stimuli to regulate tissue homeostasis [26]. We sought to determine whether *Mig6* is also induced by type 1 diabetes-associated pathological stimuli, hence mediating diabetes progression. As proinflammatory cytokines are major contributors to beta cell dysfunction and death in type 1 diabetes, we treated isolated human islets and rat 832/13 INS-1-derived beta cells with a cytokine cocktail containing IL-1 $\beta$ , TNF- $\alpha$  and IFN- $\gamma$ . We observed *Mig6* mRNA induction in both human islets and 832/13 cells (Fig. 1). Interestingly, *Mig6* and *Ins* mRNA expression are inversely correlated in human islets, suggesting that MIG6 might control beta cell homeostasis and function.

To identify the cellular and molecular mechanisms controlled by MIG6 during diabetes development, we exposed 832/13 cells to proinflammatory cytokines to induce a condition that mimics the islet inflammation present in developing type 1 diabetes. As shown in Fig. 2, we discovered that chronic cytokine treatment inhibits EGFR phosphorylation and activation. As MIG6 is a bona fide EGFR inhibitor and *Mig6* expression is induced by proinflammatory cytokines, we speculated that the cytokine-induced MIG6 is responsible for EGFR inactivation. Indeed, siRNA-mediated MIG6 knockdown overcomes the cytokine-induced attenuation of EGFR and extracellular signal-regulated kinase 1 and 2 (ERK1/2) activation.

### Mig6 haploinsufficiency protects against STZ-induced metabolic dysfunction

To investigate the pathophysiological roles of MIG6 during type 1 diabetes development, we challenged *Mig6*<sup>+/-</sup> and *Mig6*<sup>+/+</sup> mice with MLD-STZ. MLD-STZ administration is known to induce hyperglycaemia by: (1) direct DNA-damaging effects in beta cells; and (2) an indirect inflammatory effect that promotes islet dysfunction and death [27]. Hence, we employed MLD-STZ treatment as an experimental model to mimic beta cell destruction in human type 1 diabetes. Heterozygous rather than homozygous *Mig6* knockout mice were used because: (1) homozygous knockouts are reported to have a higher embryonic lethality rate [19], and are not viable in our facility; and (2) under normal conditions, heterozygous mice exhibit physiological and metabolic features similar to those of wild-type mice and exhibit comparable islet architecture [18]. In the current study, we treated 10-week-old *Mig6*<sup>+/-</sup> and *Mig6*<sup>+/+</sup> mice with MLD-STZ, and performed metabolic and histological analyses on various days after STZ treatments (Fig. 3). Whereas STZ-treated *Mig6*<sup>+/+</sup> (hereafter referred to as STZ-*Mig6*<sup>+/+</sup>) mice developed profound glucose intolerance, STZ-*Mig6*<sup>+/-</sup> mice remained glucose tolerant compared with saline-treated control mice at the same time point (Fig. 4). Additionally, STZ-*Mig6*<sup>+/+</sup> exhibited fasting hyperglycaemia, in contrast to STZ-*Mig6*<sup>+/-</sup> mice ( $12.40 \pm 0.86$  mmol/l vs  $10.21 \pm 0.57$  mmol/l;  $p < 0.05$ ). Concurrently, STZ-*Mig6*<sup>+/-</sup> mice had higher serum insulin concentrations following a glucose injection (Fig. 5). As both untreated and STZ-treated *Mig6*<sup>+/-</sup> and *Mig6*<sup>+/+</sup> mice

have comparable insulin tolerance, the preserved glucose tolerance in STZ-*Mig6*<sup>+/-</sup> mice probably results from preserved beta cell function. In fact, pancreatic islets from STZ-*Mig6*<sup>+/-</sup> mice have higher *Pdx1* and *IRS2* mRNA expression levels compared to islets from STZ-*Mig6*<sup>+/+</sup> mice. Taken together, these data suggest that MIG6 is required for the destructive events leading to glucose intolerance and loss of islet beta cell integrity following STZ treatment.

### **Mig6 regulates beta cell integrity and function**

Our findings suggest that MIG6 participates in beta cell destruction and/or dysfunction in this rodent diabetes model. To further examine the role of MIG6 in beta cell (dys)function, we treated rat islets with an adenoviral *Mig6* expression vector and demonstrated that elevated MIG6 significantly reduces GSIS (Fig. 6). Additionally, because ERK signalling has been implicated in beta cell integrity and function, and MIG6 suppressed EGFR signalling (including ERK phosphorylation), we investigated whether MIG6 suppresses the downstream effectors of ERK. Elevated MIG6 expression indeed reduced ERK target gene (i.e. *Pdx1* and *Ins1*) expression in 832/13 cells. Collectively, our findings suggest that cytokine-induced MIG6 abrogates EGFR and ERK signalling cascades in beta cells, and that elevated MIG6 compromises beta cell function.

### **Mig6 haploinsufficiency does not affect STZ- and cytokine-induced islet inflammation**

As mentioned previously, MLD-STZ treatment promotes both glucose intolerance and hyperglycaemia and mimics human type 1 diabetes through promoting islet inflammation. To determine whether MIG6 regulates islet inflammation, we examined the degree of immune cell infiltration in STZ-*Mig6*<sup>+/-</sup> and *Mig6*<sup>+/+</sup> mice. *Mig6*<sup>+/-</sup> and *Mig6*<sup>+/+</sup> mice showed comparable, low insulinitis scores (Fig. 7). Furthermore, islets from *Mig6*<sup>+/-</sup> and *Mig6*<sup>+/+</sup> mice exhibited similar cytokine responsiveness, with both producing similar amounts of NO. Taken together, these data suggest that although MIG6 probably does not modulate immunity in this model, it is crucial for controlling beta cell function and integrity during a diabetogenic assault.

### **Mig6<sup>+/-</sup> mice have improved beta cell mass recovery following STZ treatment**

To determine whether MIG6 regulates beta cell regeneration following MLD-STZ treatment, we examined the histomorphology of isolated *Mig6*<sup>+/-</sup> and *Mig6*<sup>+/+</sup> mouse pancreases. Whereas *Mig6*<sup>+/+</sup> exhibited a sustained reduction in insulin-positive cross-sectional area, beta cell mass recovered by 21 days post-STZ in *Mig6*<sup>+/-</sup> mice to a level comparable with saline-treated mice (Fig. 8). To identify whether the observed regeneration occurred through beta cell replication, we performed pH3 staining to evaluate the mitotic rate. Interestingly, STZ-*Mig6*<sup>+/-</sup> and STZ-*Mig6*<sup>+/+</sup> mice had almost identical beta cell replication rates, suggesting that another factor(s) contributes to *Mig6* haploinsufficiency-enhanced beta cell mass recovery.

### **Mig6 mediates DNA damage-induced beta cell apoptosis**

We speculated that the enhanced recovery of beta cells observed in STZ-*Mig6*<sup>+/-</sup> mice results from elevated beta cell survival through enhanced repair and recovery mechanisms.

We therefore analysed these events in 832/13 cells. First, we observed that diabetogenic factors such as proinflammatory cytokines (Fig. 9) and reactive oxygen species (data not shown) induce beta cell DNA damage and repair, as indicated by the p53 Ser-15 phosphorylation and accumulation. Next, we examined whether a reduction in MIG6 would increase EGFR signalling and promote beta cell survival. Importantly, siRNA-mediated MIG6 suppression in 832/13 cells elevated CA-induced p53 protein expression and partially protected beta cells from DNA damage-induced apoptosis, as measured by caspase 3 cleavage.

## Discussion

There is currently much interest in the antidiabetogenic effects of EGFR signalling [28], and we are specifically interested in MIG6 inhibition of stress-inducible EGFR feedback. In the current study, we employed *Mig6* haploinsufficient mice to examine the role of MIG6 in experimental diabetes progression. We treated *Mig6*<sup>+/-</sup> and *Mig6*<sup>+/+</sup> mice with MLD-STZ to induce diabetes. We observed that *Mig6*<sup>+/-</sup> mice are resistant to developing STZ-induced diabetes: postprandial glycaemia, glucose tolerance and serum insulin levels following a glucose load are preserved. Insulin sensitivity (both before and after STZ treatment) is comparable between *Mig6*<sup>+/-</sup> and *Mig6*<sup>+/+</sup> mice, suggesting that improved glucose homeostasis in STZ-*Mig6*<sup>+/-</sup> mice results from preserved beta cell function. Nevertheless, we recognise that systemic *Mig6* haploinsufficiency might alter immunity, angiogenesis or nutrient utilisation in other tissues. However, we established that MIG6 modulates beta cell function and integrity in vivo and in vitro. Whereas half of the beta cells in *Mig6*<sup>+/-</sup> and *Mig6*<sup>+/+</sup> mice were ablated by STZ treatment, the remaining islets from *Mig6*<sup>+/-</sup> mice had higher *Pdx1* and *IRS2* mRNA levels. In contrast, elevated MIG6 expression causes beta cell dysfunction in isolated rat islets. As MIG6 has been shown to inhibit ERK1/2 activation in beta cells [17], we examined whether other beta cell genes are transcriptionally regulated by ERK1/2 in the context of MIG6 overexpression. We found that *Pdx1* and *Ins1/2* mRNA levels are reduced in 832/13 INS-1 cells with elevated *Mig6* expression. Additionally, proinflammatory cytokine-induced *Mig6* mRNA expression inversely correlates with *Ins2* mRNA levels in isolated human islets. Therefore, MIG6 may compromise beta cell function in human type 1 diabetes patients.

We utilised 832/13 cells to study the effect of MIG6 overexpression on EGFR signalling in a type 1 diabetes proinflammatory cytokine milieu. We established, for the first time, that proinflammatory cytokines impair EGFR signalling. Excitingly, siRNA-mediated suppression of MIG6 partially restores the cytokine-mediated attenuation of EGFR activity. Because proinflammatory cytokines promote NO production and cause beta cell damage [29], it will be interesting to determine whether NO mediates beta cell EGFR inactivation, as reported in other cell types [30, 31]. In addition, it remains to be determined whether cytokine-induced NO participates in the induction of EGFR inhibitor such as MIG6. Nevertheless, our discovery brings a new level of complexity to the mechanism of traditional growth factor-based glucose-lowering therapies. We suggest that under pathological conditions, intracellular and extracellular stress directly inactivates mitogenic signalling pathways via stress-inducible negative regulators. Our data suggest that cellular stress might interfere with the glucose-lowering or regenerative effect of growth factor

therapies. Excitingly, Wang et al recently proposed a similar hypothesis [32]. They reported that combinatorial therapy comprising anti-CD3/CD8 immunotherapy (to eradicate inflammatory assaults) and gastrin plus EGF (to augment beta cell regeneration) reverses late-stage diabetes in NOD mice.

Previous reports suggested that EGF plus gastrin cotreatment increases beta cell mass by promoting beta cell proliferation [32], transdifferentiation [33–35] and neogenesis [32]. In the current study, we used *Mig6*<sup>+/-</sup> mice as an alternative model to examine the mechanism of EGF-regulated beta cell regeneration. We showed that STZ-*Mig6*<sup>+/-</sup> mice had improved beta cell mass recovery 20 days after STZ treatment. However, cell replication is probably not the mechanism responsible for increased beta cell mass because both genotypes exhibited similar STZ-stimulated beta cell proliferation rates. Given this, we infer that recovery of the insulin-positive area is attributed to other sources such as transdifferentiation or the restoration of insulin positivity (i.e. beta cell recovery) [8]. However, we do not consider duct-to-beta cell transdifferentiation to be the main contributor to the increased beta cell mass in STZ-*Mig6*<sup>+/-</sup> mice because CK19/Ins-positive cells are rare at the time points used for our histological studies (data not shown).

As an alternative to these mechanisms, we examined whether *Mig6* haploinsufficiency facilitates beta cell survival because: (1) newly generated beta cells are more susceptible to cell death [36]; (2) we and others have demonstrated that MIG6 promotes apoptosis [18, 37]; and (3) EGFR promotes DNA damage repair and facilitates survival in various cell types [38]. We revealed that proinflammatory cytokines induce DNA damage in 832/13 cells, as indicated by the elevated levels of phosphorylated and total p53 protein. In addition, we showed that siRNA-mediated MIG6 suppression partially protects beta cells from DNA damage-induced apoptosis mediated by p53. However, we cannot rule out the possibility that MIG6 promotes beta cell death through EGFR-independent mechanisms, as suggested by Hopkins et al [37]. Further, EGFR facilitates cell survival through various molecular actions, such as promoting phosphoinositide 3-kinase (PI3K)/Akt- and Ras/ERK-mediated transcription of DNA repair genes [39, 40], and activating nuclear proteins involved in damage repair [41, 42]. Thus, future investigations should aim to elucidate the signalling pathways through which MIG6 regulates EGFR activity and cell survival.

Taken together, we demonstrated that while MIG6 deficiency does not enhance STZ-stimulated beta cell proliferation, it probably allows beta cells to mount a more robust damagerepair response, leading to their improved recovery and insulin positivity. Our discovery highlights the largely overlooked beta cell repair mechanisms as potential therapeutic targets in diabetes [4]. Indeed, accumulated cadaveric studies reported that even long-term type 1 diabetes patients have minimal levels of C-peptide and preserved beta cells (albeit degranulated and scattered as small clusters) [43–45], and that human islets are capable of recovering from damage [6, 9, 46]. These findings suggest that beta cells in type 1 diabetes patients can be repaired if provided with the proper stimulation. We suggest that targeted MIG6 inhibition could be a good treatment option for type 1 diabetes because MIG6 compromises beta cell functional integrity and facilitates beta cell death. To explore this idea further, future studies will examine the role of MIG6 in diabetes development in the NOD mouse, which is a better model of human type 1 diabetes.



In summary, our data demonstrated that cytokine-induced MIG6 negatively controls EGFR signalling compromises beta cell function and identity, and inhibits beta cell recovery in a chemically-induced diabetes model. This study indicates that using growth factors alone as antidiabetogenic therapies could be ineffective because pathological stimuli can directly turn off mitogenic signalling pathways via negative regulators such as MIG6. Further, we propose that targeting the beta cell recovery machinery represents a promising therapeutic strategy to prevent or reverse type 1 diabetes progression.

## Supplementary Material

Refer to Web version on PubMed Central for supplementary material.

## Acknowledgments

We thank G. Vande Woude (Van Andel Research Institute, Grand Rapids, MI, USA) for the *Mig6*<sup>+/-</sup> mice, D. Xu and J. Kyriakis (Tufts Medical Center, Boston, MA, USA) for the CMV-MIG6 adenovirus, N. Stull and K. Benninger (Indiana University School of Medicine, Indianapolis, IN, USA) for assistance with islet isolation, A. Hernandez and A. Lutkewitte (Indiana University School of Medicine) for assistance with animal husbandry, T. Kono and C. Evans-Molina (Indiana University School of Medicine) for providing human islet samples, and R. Mirmira (Indiana University School of Medicine) for critical discussions.

### Funding

This work was supported by grants from the National Institutes of Health (DK078732 and DK099311), the Showalter Research Trust at Indiana University School of Medicine, and the Indiana Lions Diabetes Awareness program (all to PTF). YCC was the recipient of a DeVault Fellowship from Indiana University School of Medicine.

## Abbreviations

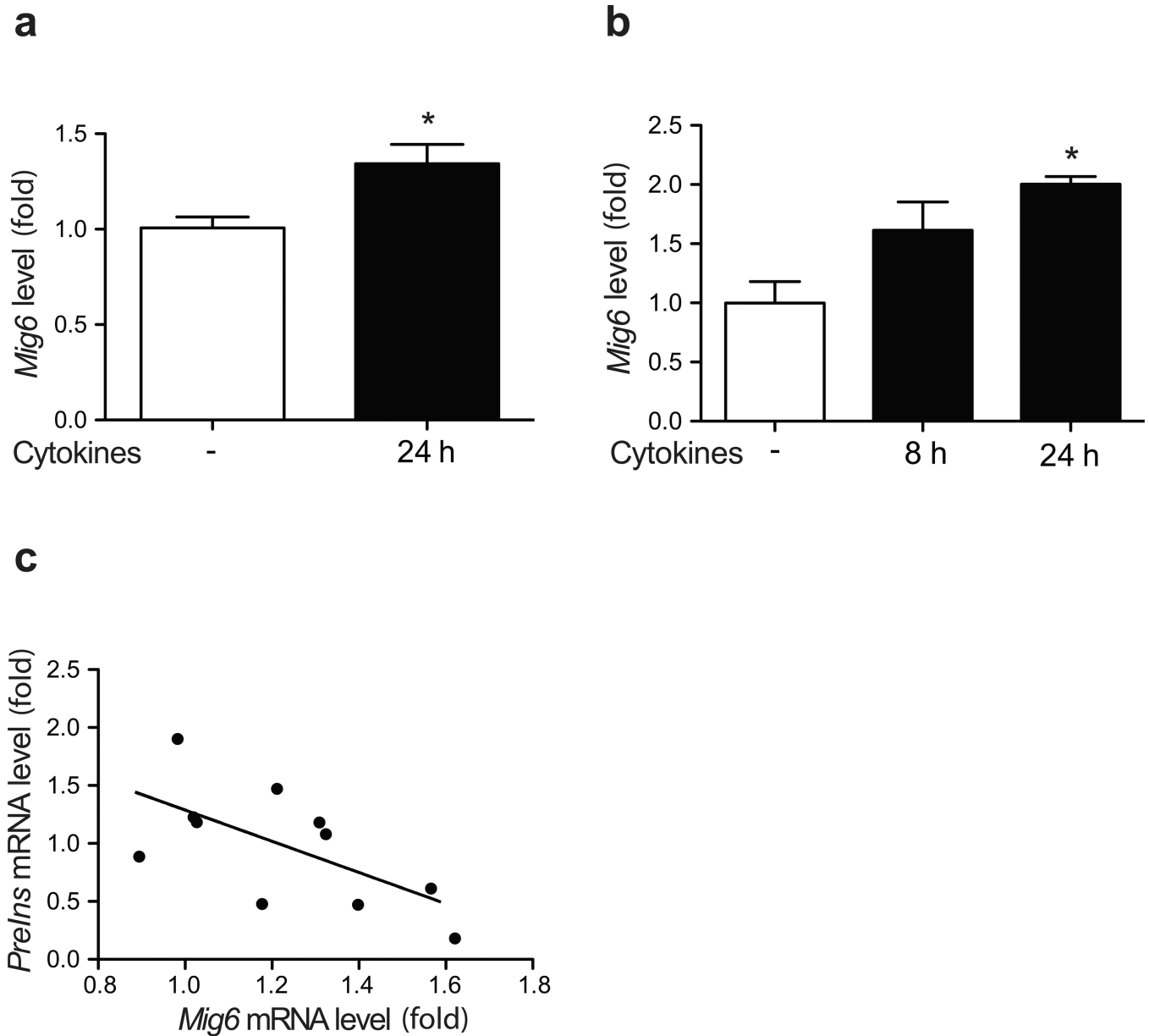
<b>CA</b>	Camptothecin
<b>CMV</b>	Cytomegalovirus
<b>EGFR</b>	Epidermal growth factor receptor
<b>ERK</b>	Extracellular signal-regulated kinase
<b>GFP</b>	Green fluorescent protein
<b>GSIS</b>	Glucose-stimulated insulin secretion
<b>GTT</b>	Glucose tolerance testing
<b>ITT</b>	Insulin tolerance testing
<b>MAPK</b>	Mitogen-activated protein kinase
<b>MIG6</b>	Mitogen-inducible gene 6 protein
<b>MLD</b>	Multiple low dose
<b>STZ</b>	Streptozotocin
<b>STZ-Mig6<sup>+/+</sup></b>	STZ-treated <i>Mig6</i> <sup>+/+</sup>
<b>STZ-Mig6<sup>+/-</sup></b>	STZ-treated <i>Mig6</i> <sup>+/-</sup>

## References

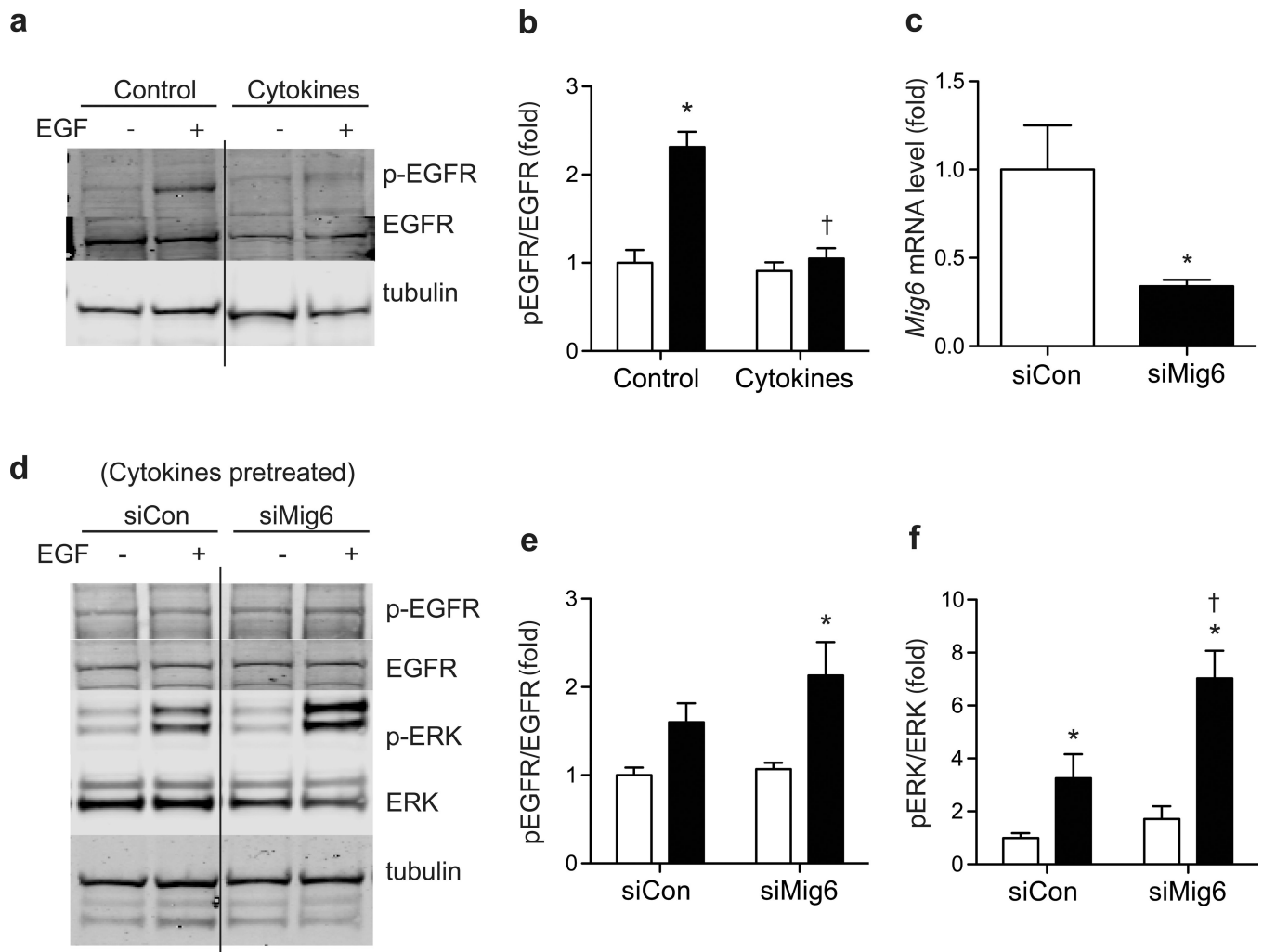
1. von Herrath M, Sanda S, Herold K. Type 1 diabetes as a relapsing-remitting disease? *Nat Rev Immunol.* 2007; 7:988–994. [PubMed: 17982429]
2. Skyler JS. The year in immune intervention for type 1 diabetes. *Diabetes Technol Ther.* 2013; 15(Suppl 1):S88–S95. [PubMed: 23441712]
3. Akirav E, Kushner JA, Herold KC. Beta-cell mass and type 1 diabetes: going, going, gone? *Diabetes.* 2008; 57:2883–2888. [PubMed: 18971435]
4. Eizirik DL, Sandler S, Palmer JP. Repair of pancreatic beta-cells. A relevant phenomenon in early IDDM? *Diabetes.* 1993; 42:1383–1391. [PubMed: 8375580]
5. Group TDCaCTR. Effect of intensive therapy on residual beta-cell function in patients with type 1 diabetes in the diabetes control and complications trial. A randomized, controlled trial. *Ann Intern Med.* 1998; 128:517–523. [PubMed: 9518395]
6. Karges B, Durinovic-Bello I, Heinze E, Boehm BO, Debatin KM, Karges W. Complete long-term recovery of beta-cell function in autoimmune type 1 diabetes after insulin treatment. *Diabetes Care.* 2004; 27:1207–1208. [PubMed: 15111548]
7. Bottino R, Criscimanna A, Casu A, et al. Recovery of endogenous beta-cell function in nonhuman primates after chemical diabetes induction and islet transplantation. *Diabetes.* 2009; 58:442–447. [PubMed: 19001183]
8. Sherry NA, Kushner JA, Glandt M, Kitamura T, Brillantes AM, Herold KC. Effects of autoimmunity and immune therapy on beta-cell turnover in type 1 diabetes. *Diabetes.* 2006; 55:3238–3245. [PubMed: 17130466]
9. Lupi R, Marselli L, Dionisi S, et al. Improved insulin secretory function and reduced chemotactic properties after tissue culture of islets from type 1 diabetic patients. *Diabetes/Metabolism Research and Reviews.* 2004; 20:246–251. [PubMed: 15133757]
10. Fiorentino L, Pertica C, Fiorini M, et al. Inhibition of ErbB-2 mitogenic and transforming activity by RALT, a mitogen-induced signal transducer which binds to the ErbB-2 kinase domain. *Mol Cell Biol.* 2000; 20:7735–7750. [PubMed: 11003669]
11. Anastasi S, Baietti MF, Frosi Y, Alema S, Segatto O. The evolutionarily conserved EBR module of RALT/MIG6 mediates suppression of the EGFR catalytic activity. *Oncogene.* 2007; 26:7833–7846. [PubMed: 17599051]
12. Zhang X, Pickin KA, Bose R, Jura N, Cole PA, Kuriyan J. Inhibition of the EGF receptor by binding of MIG6 to an activating kinase domain interface. *Nature.* 2007; 450:741–744. [PubMed: 18046415]
13. Frosi Y, Anastasi S, Ballaro C, et al. A two-tiered mechanism of EGFR inhibition by RALT/MIG6 via kinase suppression and receptor degradation. *J Cell Biol.* 2010; 189:557–571. [PubMed: 20421427]
14. Makkinje A, Quinn DA, Chen A, et al. Gene 33/Mig-6, a transcriptionally inducible adapter protein that binds GTP-Cdc42 and activates SAPK/JNK. A potential marker transcript for chronic pathologic conditions, such as diabetic nephropathy. Possible role in the response to persistent stress. *J Biol Chem.* 2000; 275:17838–17847. [PubMed: 10749885]
15. Xu D, Patten RD, Force T, Kyriakis JM. Gene 33/RALT is induced by hypoxia in cardiomyocytes, where it promotes cell death by suppressing phosphatidylinositol 3-kinase and extracellular signal-regulated kinase survival signaling. *Mol Cell Biol.* 2006; 26:5043–5054. [PubMed: 16782890]
16. Xu D, Makkinje A, Kyriakis JM. Gene 33 is an endogenous inhibitor of epidermal growth factor (EGF) receptor signaling and mediates dexamethasone-induced suppression of EGF function. *J Biol Chem.* 2005; 280:2924–2933. [PubMed: 15556944]
17. Colvin ES, Ma HY, Chen YC, Hernandez AM, Fueger PT. Glucocorticoid-induced suppression of beta-cell proliferation is mediated by Mig6. *Endocrinology.* 2013; 154:1039–1046. [PubMed: 23384834]
18. Chen YC, Colvin ES, Maier BF, Mirmira RG, Fueger PT. Mitogen-inducible gene 6 triggers apoptosis and exacerbates ER stress-induced beta-cell death. *Mol Endocrinol.* 2013; 27:162–171. [PubMed: 23204325]

19. Zhang YW, Su Y, Lanning N, et al. Targeted disruption of Mig-6 in the mouse genome leads to early onset degenerative joint disease. *Proc Natl Acad Sci U S A*. 2005; 102:11740–11745. [PubMed: 16087873]
20. Demirci C, Ernst S, Alvarez-Perez JC, et al. Loss of HGF/c-Met signaling in pancreatic beta-cells leads to incomplete maternal beta-cell adaptation and gestational diabetes mellitus. *Diabetes*. 2012; 61:1143–1152. [PubMed: 22427375]
21. Fueger PT, Hernandez AM, Chen YC, Colvin ES. Assessing replication and beta cell function in adenovirally-transduced isolated rodent islets. *J Vis Exp*. 2012; 64:e4080.
22. Collier JJ, Fueger PT, Hohmeier HE, Newgard CB. Pro- and antiapoptotic proteins regulate apoptosis but do not protect against cytokine-mediated cytotoxicity in rat islets and betacell lines. *Diabetes*. 2006; 55:1398–1406. [PubMed: 16644697]
23. Hohmeier HE, Mulder H, Chen G, Henkel-Rieger R, Prentki M, Newgard CB. Isolation of INS-1-derived cell lines with robust ATP-sensitive K<sup>+</sup> channel-dependent and - independent glucose-stimulated insulin secretion. *Diabetes*. 2000; 49:424–430. [PubMed: 10868964]
24. Evans-Molina C, Garmey JC, Ketchum R, Brayman KL, Deng S, Mirmira RG. Glucose regulation of insulin gene transcription and pre-mRNA processing in human islets. *Diabetes*. 2007; 56:827–835. [PubMed: 17327454]
25. Mohn KL, Laz TM, Melby AE, Taub R. Immediate-early gene expression differs between regenerating liver, insulin-stimulated H-35 cells, and mitogen-stimulated Balb/c 3T3 cells. Liver-specific induction patterns of gene 33, phosphoenolpyruvate carboxykinase, and the jun, fos, and egr families. *J Biol Chem*. 1990; 265:21914–21921. [PubMed: 2123877]
26. Zhang YW, Vande Woude GF. Mig-6, signal transduction, stress response and cancer. *Cell Cycle*. 2007; 6:507–513. [PubMed: 17351343]
27. Lenzen S. The mechanisms of alloxan- and streptozotocin-induced diabetes. *Diabetologia*. 2008; 51:216–226. [PubMed: 18087688]
28. Hakonen E, Ustinov J, Eizirik DL, Sariola H, Miettinen PJ, Otonkoski T. In vivo activation of the PI3K-Akt pathway in mouse beta cells by the EGFR mutation L858R protects against diabetes. *Diabetologia*. 2014; 57:970–979. [PubMed: 24493201]
29. Cnop M, Welsh N, Jonas JC, Jorns A, Lenzen S, Eizirik DL. Mechanisms of pancreatic beta-cell death in type 1 and type 2 diabetes: many differences, few similarities. *Diabetes*. 2005; 54(Suppl 2):S97–S107. [PubMed: 16306347]
30. Murillo-Carretero M, Ruano MJ, Matarredona ER, Villalobo A, Estrada C. Antiproliferative effect of nitric oxide on epidermal growth factor-responsive human neuroblastoma cells. *J Neurochem*. 2002; 83:119–131. [PubMed: 12358735]
31. Ruano MJ, Hernandez-Hernando S, Jimenez A, Estrada C, Villalobo A. Nitric oxide-induced epidermal growth factor-dependent phosphorylations in A431 tumour cells. *Eur J Biochem*. 2003; 270:1828–1837. [PubMed: 12694196]
32. Wang M, Racine JJ, Song X, et al. Mixed chimerism and growth factors augment beta cell regeneration and reverse late-stage type 1 diabetes. *Sci Transl Med*. 2012; 4:133ra159.
33. Rooman I, Bouwens L. Combined gastrin and epidermal growth factor treatment induces islet regeneration and restores normoglycaemia in C57B16/J mice treated with alloxan. *Diabetologia*. 2004; 47:259–265. [PubMed: 14666367]
34. Suarez-Pinzon WL, Lakey JR, Rabinovitch A. Combination therapy with glucagon-like peptide-1 and gastrin induces beta-cell neogenesis from pancreatic duct cells in human islets transplanted in immunodeficient diabetic mice. *Cell Transplant*. 2008; 17:631–640. [PubMed: 18819251]
35. Baeyens L, Lemper M, Leuckx G, et al. Transient cytokine treatment induces acinar cell reprogramming and regenerates functional beta cell mass in diabetic mice. *Nat Biotechnol*. 2014; 32:76–83. [PubMed: 24240391]
36. Meier JJ, Ritzel RA, Maedler K, Gurlo T, Butler PC. Increased vulnerability of newly forming beta cells to cytokine-induced cell death. *Diabetologia*. 2006; 49:83–89. [PubMed: 16323002]
37. Hopkins S, Linderth E, Hantschel O, et al. Mig6 is a sensor of EGF receptor inactivation that directly activates c-Abl to induce apoptosis during epithelial homeostasis. *Dev Cell*. 2012; 23:547–559. [PubMed: 22975324]

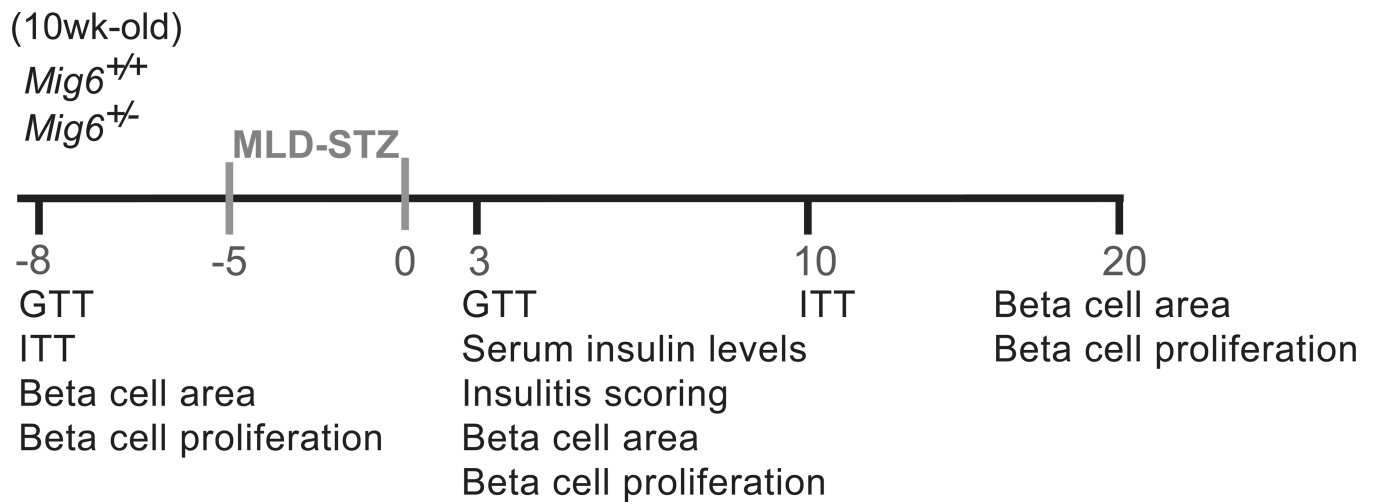
38. Meyn RE, Munshi A, Haymach JV, Milas L, Ang KK. Receptor signaling as a regulatory mechanism of DNA repair. *Radiotherapy and oncology : journal of the European Society for Therapeutic Radiology and Oncology*. 2009; 92:316–322. [PubMed: 19615770]
39. Yacoub A, McKinstry R, Hinman D, Chung T, Dent P, Hagan MP. Epidermal growth factor and ionizing radiation up-regulate the DNA repair genes XRCC1 and ERCC1 in DU145 and LNCaP prostate carcinoma through MAPK signaling. *Radiation research*. 2003; 159:439–452. [PubMed: 12643788]
40. Ko JC, Hong JH, Wang LH, et al. Role of repair protein Rad51 in regulating the response to gefitinib in human non-small cell lung cancer cells. *Mol Cancer Ther*. 2008; 7:3632–3641. [PubMed: 19001445]
41. Bandyopadhyay D, Mandal M, Adam L, Mendelsohn J, Kumar R. Physical interaction between epidermal growth factor receptor and DNA-dependent protein kinase in mammalian cells. *J Biol Chem*. 1998; 273:1568–1573. [PubMed: 9430697]
42. Golding SE, Rosenberg E, Neill S, Dent P, Povirk LF, Valerie K. Extracellular signal-related kinase positively regulates ataxia telangiectasia mutated, homologous recombination repair, and the DNA damage response. *Cancer Res*. 2007; 67:1046–1053. [PubMed: 17283137]
43. Keenan HA, Sun JK, Levine J, et al. Residual insulin production and pancreatic  $\beta$ -cell turnover after 50 years of diabetes: Joslin Medalist Study. *Diabetes*. 2010; 59:2846–2853. [PubMed: 20699420]
44. Gianani R, Campbell-Thompson M, Sarkar SA, et al. Dimorphic histopathology of long-standing childhood-onset diabetes. *Diabetologia*. 2010; 53:690–698. [PubMed: 20062967]
45. Meier JJ, Bhushan A, Butler AE, Rizza RA, Butler PC. Sustained beta cell apoptosis in patients with long-standing type 1 diabetes: indirect evidence for islet regeneration? *Diabetologia*. 2005; 48:2221–2228. [PubMed: 16205882]
46. Menge BA, Breuer TG, Ritter PR, Uhl W, Schmidt WE, Meier JJ. Long-term recovery of beta-cell function after partial pancreatectomy in humans. *Metabolism*. 2012; 61:620–624. [PubMed: 22079939]



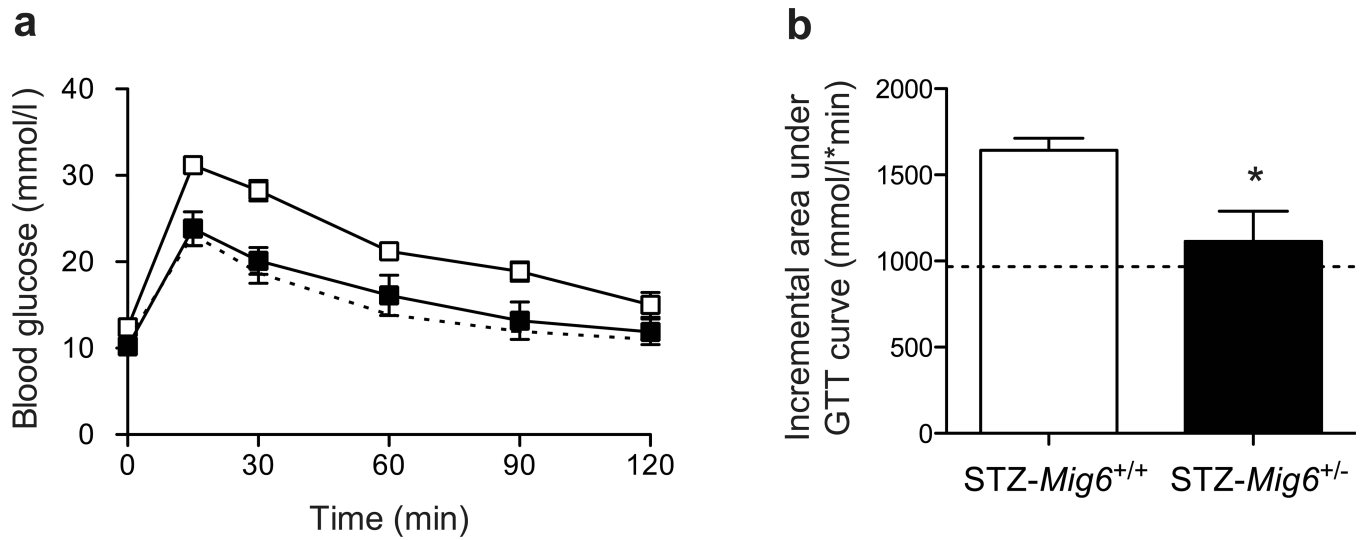
**Fig. 1.** Proinflammatory cytokines induce MIG6 expression. (a) Human islets or (b) 832/13 cells were treated with cytokines, and *MIG6/Mig6* expression was determined.  $n=4$ ;  $*p<0.05$ . (c) *INS2* mRNA levels from four human islet donors ( $\pm$  cytokines) were plotted against *MIG6* mRNA levels ( $r^2=0.40$ ,  $p<0.05$ )



**Fig. 2.** MIG6 suppression rescues cytokine inhibition of EGFR. 832/13 cells were pretreated with cytokines for 16 h and then stimulated with EGF to determine phospho (p)-EGFR, EGFR and tubulin levels: **(a)** a representative image and **(b)** quantified results (white bars, no EGF; black bars, EGF treated).  $n=3$ ,  $*p<0.05$  vs untreated,  $†p<0.05$  vs noncytokine EGF stimulated. The solid line indicates cropped lanes within the same experiment. **(c-f)** 832/13 cells were transduced with adenoviral vectors carrying either a scrambled control RNA (siCon) or shRNA sequence against *Mig6* (siMig6). **(c)** MIG6 knockdown efficiency was determined.  $n=3$ ,  $*p<0.05$  vs siCon. Following transduction, cells were treated with cytokines for 8 h and then EGF, and p-EGFR, EGFR, p-ERK, ERK and tubulin levels were determined: **(d)** a representative image and **(e-f)** quantified results.  $n=3$ ;  $*p<0.05$  vs untreated,  $†p<0.05$  vs siCon EGF stimulated

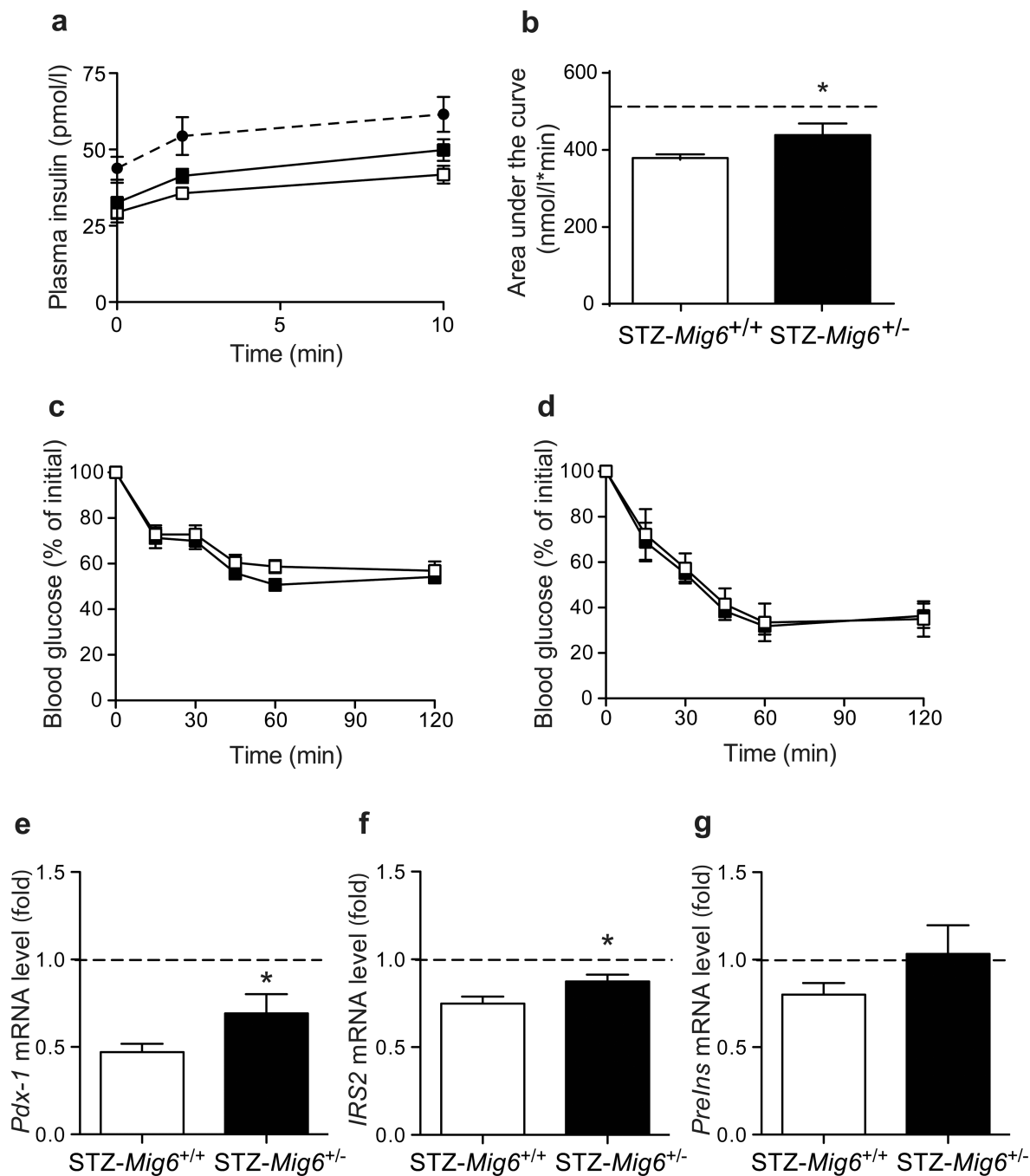


**Fig. 3.**  
 Schematic representation of the experimental timeline

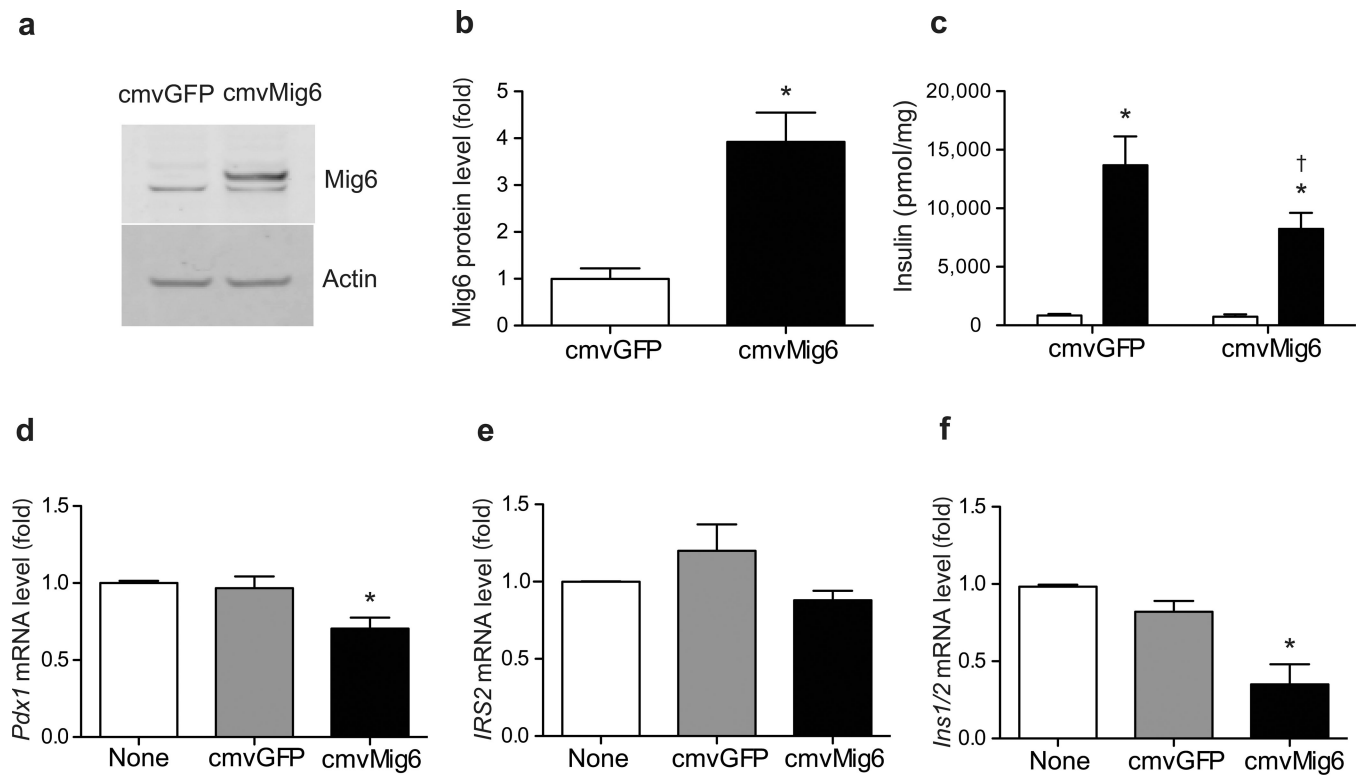


**Fig. 4.** *Mig6*<sup>+/-</sup> mice are protected from STZ-induced glucose intolerance. GTT was performed 3 days post-STZ injection. (a) Time course and (b) incremental AUC are shown. Dotted lines indicate values for saline-injected *Mig6*<sup>+/+</sup> controls. *n*=5; \**p*<0.05 vs STZ-*Mig6*<sup>+/+</sup>

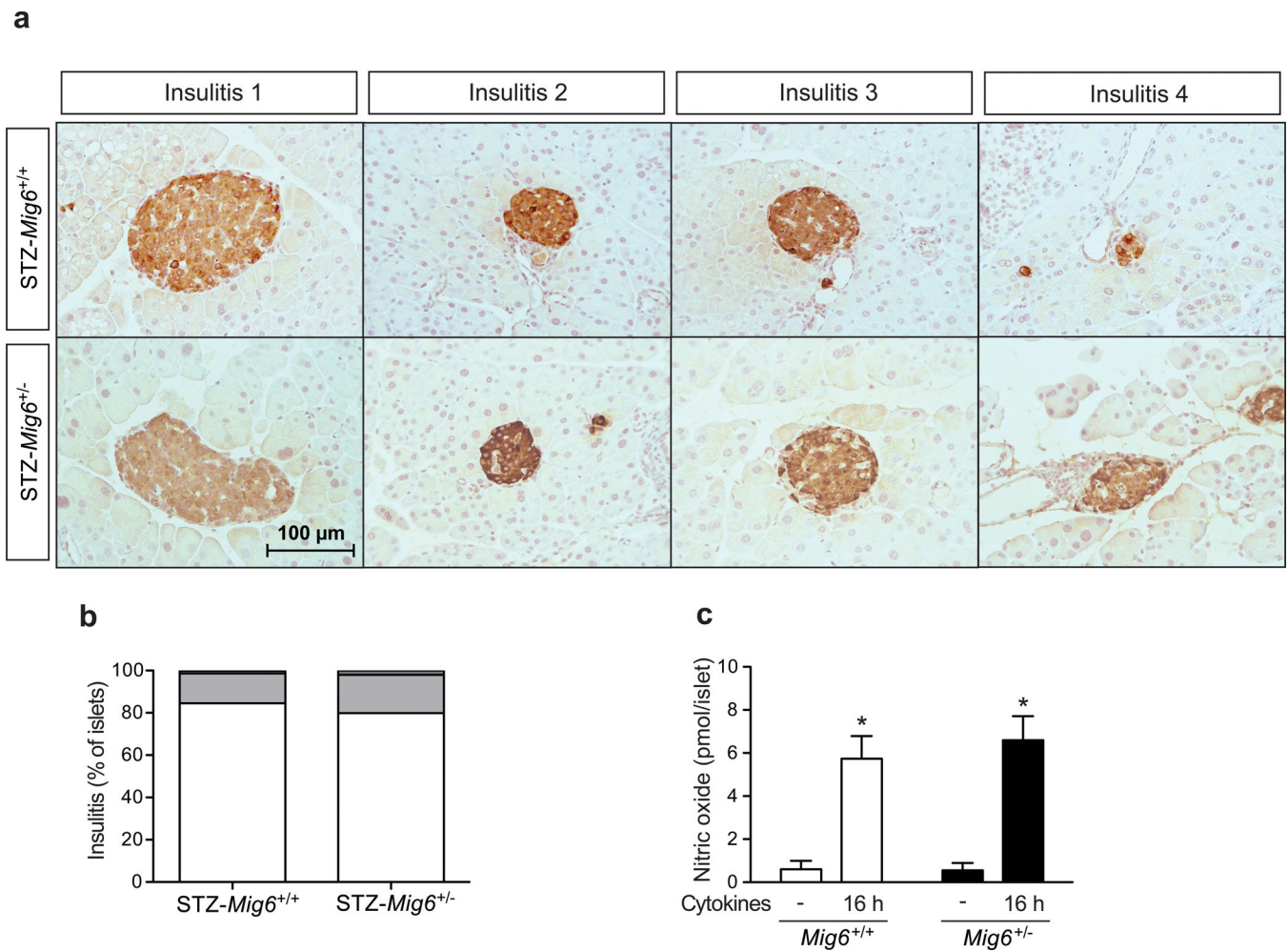


**Fig. 5.**

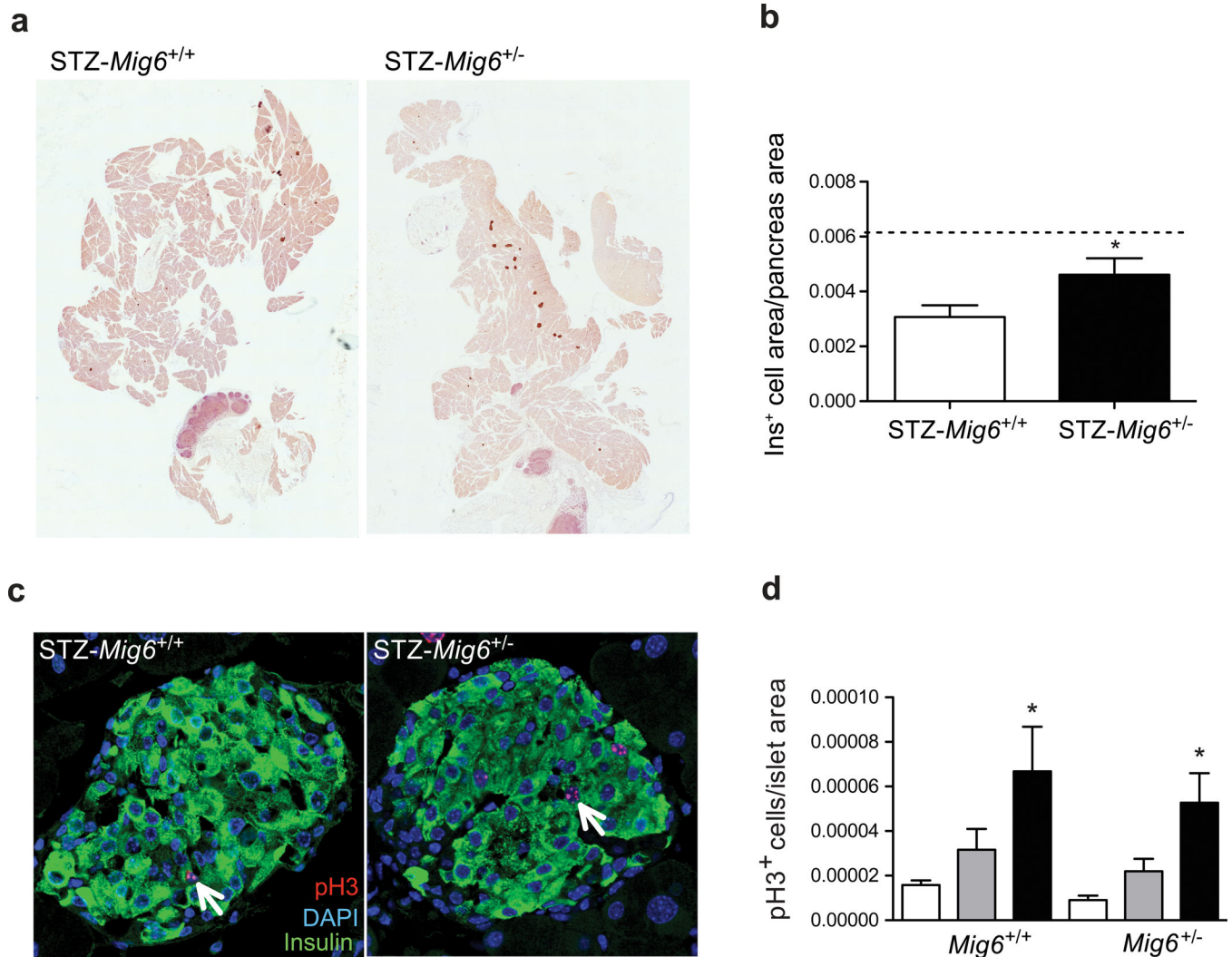
STZ-*Mig6*<sup>+/-</sup> mice have preserved beta cell function. (a, b) Circulating insulin levels during a glucose challenge (a) Time course and (b) AUC are shown.  $n=8$ ,  $*p<0.05$  vs STZ-*Mig6*<sup>+/+</sup>. (c, d) Blood glucose levels during ITT pre- and post-STZ treatment. (e-g) *Pdx1*, *IRS2*, and *Ins2* mRNA levels in islets isolated from saline-injected *Mig6*<sup>+/+</sup>, STZ-*Mig6*<sup>+/-</sup> and STZ-treated *Mig6*<sup>+/+</sup> mice. Dotted lines indicate values for saline-injected *Mig6*<sup>+/+</sup> controls.  $n>5$ ;  $*p<0.05$  vs STZ-*Mig6*<sup>+/+</sup>

**Fig. 6.**

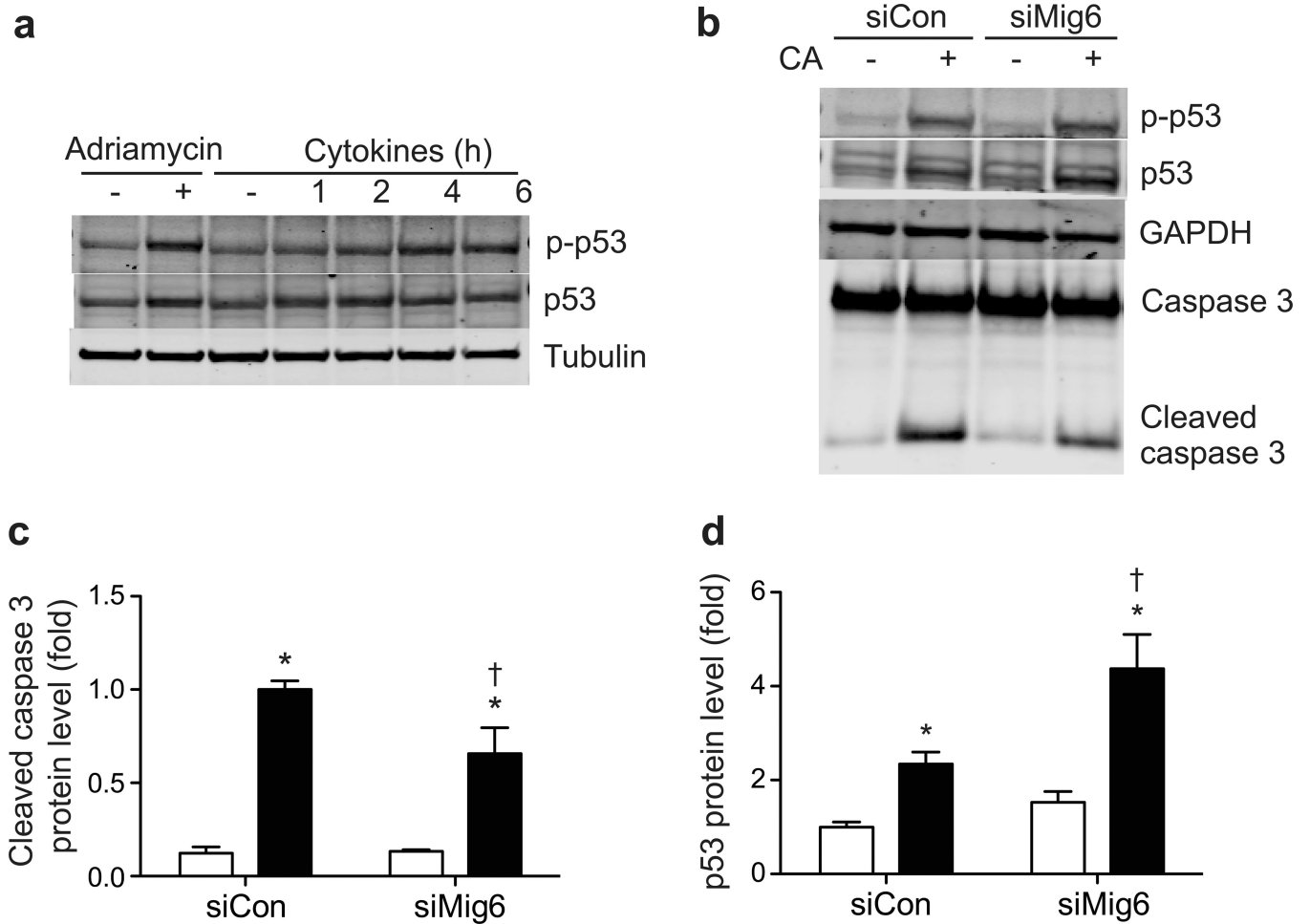
MIG6 overexpression compromises beta cell integrity and islet function. (a–c) Isolated rat islets ( $n=3$ ) were transduced with (a, b) CMV-GFP or CMV-MIG6 adenoviral vectors ( $*p<0.05$  vs CMV-GFP) and (c) GSIS was assessed (white bars, low glucose; black bars, high glucose;  $*p<0.05$  vs low glucose;  $†p<0.05$  vs high glucose-stimulated CMV-GFP). (d–f) 832/13 cells were either transduced or not with CMV-GFP or CMV-MIG6 adenoviral vectors. *Pdx1*, *IRS2* and *Ins1/2* mRNA levels were determined.  $n=5$ ,  $*p<0.05$  vs untransduced or CMV-GFP



**Fig. 7.** MIG6 does not modulate the cytokine- or STZ-induced immune response. **(a, b)** Insulinitis scoring (defined in Methods) of STZ-*Mig6*<sup>+/-</sup> and STZ-*Mig6*<sup>+/+</sup> mouse pancreases. **(a)** Representative images of islets and **(b)** quantified results (white, 0; light grey, 1; dark grey, 2; black, 3). Scale bar, 100  $\mu$ m. **(c)** Islets from *Mig6*<sup>+/+</sup> (white bars) and *Mig6*<sup>+/-</sup> (black bars) were treated with cytokines and NO levels in islet culture medium was measured.  $n=3$ , \* $p<0.05$  vs untreated



**Fig. 8.** STZ-*Mig6*<sup>+/-</sup> mice show enhanced beta cell mass recovery. **(a, b)** Beta cell area was measured and expressed relative to pancreas area. Dotted line indicates the beta cell area of non-STZ-treated mice.  $n=8$ ,  $*p<0.05$  vs STZ-*Mig6*<sup>+/+</sup>. **(c, d)** The percentage of pH3-positive (pH3<sup>+</sup>) beta cells in saline controls (white bars) and at 3 and 20 days post-STZ (grey and black bars, respectively). Arrows indicate proliferating beta cells.  $n>5$ ,  $*p<0.05$  vs non-STZ. **(a, c)** Representative images of beta cell mass at 20 days



**Fig. 9.** MIG6 promotes DNA damage-induced beta cell death. **(a)** 832/13 cells were treated with doxorubicin for 6 h or with cytokines for the indicated times. Phospho (p)-p53, p53 and tubulin protein levels were determined. **(b–d)** 832/13 cells were transduced with siCon or siMig6 adenoviral vectors, and treated with vehicle (white bars) or CA (black bars). p-p53, p53, caspase-3 and GAPDH protein levels were determined.  $n=3$ , \* $p<0.05$  vs untreated, † $p<0.05$  vs siCon+CA