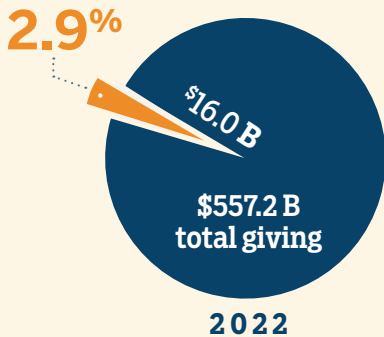


# COMMUNITIES OF COLOR INDEX: Measuring Giving to Communities of Color

The Communities of Color Index (CCI) offers the first systematically generated database of charitable organizations in the United States specifically focused on serving communities of color, revealing that these organizations receive less than 3% of total charitable giving. The inaugural CCI shows a dynamic philanthropic landscape for communities of color and can help donors, nonprofit leaders, policymakers, and scholars address equity issues in philanthropy.

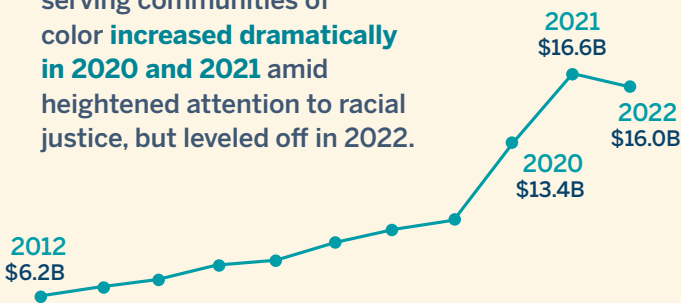


Organizations serving communities of color received **\$16.0 billion in charitable contributions in 2022**. Even following large growth in 2020 and 2021, **these organizations comprise 2.9% of overall charitable giving**.

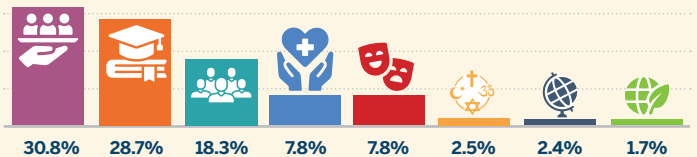


CCI organizations also disproportionately **rely on government grants**, compared to non-CCI nonprofits.

Giving to organizations serving communities of color **increased dramatically in 2020 and 2021** amid heightened attention to racial justice, but leveled off in 2022.



**Human services** and **education** organizations were the largest recipients of gifts among the CCI, at **31%** and **29%** of donations, respectively. Donations to **health organizations** represented **8%** of donations.



» **American Indian and Alaska Native communities** received \$1.2 billion, or 0.21% of total charitable giving. Government grants to these organizations, especially before COVID-19, grew at much lower rates than other nonprofits.

» **Asian-American and Pacific Islander (AAPI) communities** received \$944 million, or 0.17% of total charitable giving. Among these communities, arts organizations received particularly strong charitable support.

» **Black/African-American communities** received \$3.3 billion, or 0.61% of total charitable giving. Education organizations received the largest share, receiving 41% of all funding to these organizations.

» **Hispanic/Latino communities** received \$1.4 billion, or 0.26% of total charitable giving. From 2012 to 2022, these organizations' growth in expenses outpaced the growth in funding.

**Visit [EquitableGivingLab.org/CCI](https://EquitableGivingLab.org/CCI) for more:**

- Research report with key findings from the CCI data
- Searchable database of CCI organizations
- Downloadable dataset of CCI organizations