



Published in final edited form as:

*Nat Med.* 2023 October ; 29(10): 2438–2457. doi:10.1038/s41591-023-02502-5.

## Second international consensus report on gaps and opportunities for the clinical translation of precision diabetes medicine

*A full list of authors and affiliations appears at the end of the article.*

### Abstract

Precision medicine is part of the logical evolution of contemporary evidence-based medicine that seeks to reduce errors and optimize outcomes when making medical decisions and health recommendations. Diabetes affects hundreds of millions of people worldwide, many of whom will develop life-threatening complications and die prematurely. Precision medicine can potentially address this enormous problem by accounting for heterogeneity in the etiology, clinical presentation and pathogenesis of common forms of diabetes and risks of complications. This second international consensus report on precision diabetes medicine summarizes the findings from a systematic evidence review across the key pillars of precision medicine (prevention, diagnosis, treatment, prognosis) in four recognized forms of diabetes (monogenic, gestational, type 1, type 2). These reviews address key questions about the translation of precision medicine research into practice. Although not complete, owing to the vast literature on this topic, they revealed opportunities for the immediate or near-term clinical implementation of precision diabetes medicine; furthermore, we expose important gaps in knowledge, focusing on the need to obtain new clinically relevant evidence. Gaps include the need for common standards for clinical readiness, including consideration of cost-effectiveness, health equity, predictive accuracy, liability and accessibility. Key milestones are outlined for the broad clinical implementation of precision diabetes medicine.

---

Diabetes is a major global problem, with many hundreds of millions of people affected by the disease, many of whom are undiagnosed. The major burden of diabetes is exerted through the development of life-threatening complications, often involving damage to large

---

<sup>✉</sup> **Correspondence and requests for materials** should be addressed to Paul W. Franks. paul.franks@med.lu.se.

#### Author contributions

P.W.F. was the PMDI second international consensus report chair. R.H.E., J.J.N., L.H.P., S.R. and P.W.F. planned the work. D.K.T., C.G., S.S.R. and P.W.F. coordinated the work. D.T., R.J.dS. and D.S. provided technical guidance on systematic reviews. R.J.B., L.K.B., K.B., T.C., J.M.D., J.C.F., A.L.G., M.F.G., P.A.G., S.A.W.G., K.G., A.T.H., I.B.H., M.-F.H., K.K.H., J.L.J., S.H.K., L.M.L., S.S.L., R.J.F.L., R.C.W.M., C.M., N.M., J. Merino, S.M., V.M., R.M., R.O., K.R.O., S.E.O., E.R.P., W.P., T.I.P., R.P.-B., R.E.P., L.M.R., M.J.R., R.M.R., R.K.S., J.L.S., E.K.S., A.S., T.T., M.S.U., K.K.V., T.V. and R.W. were responsible for systematic review working group leadership. D.T., J. Merino, J.J.N., L.H.P., R.J.B., L.K.B., K.B., T.C., J.D., J.C.F., A.L.G., M.F.G., P.A.G., S.A.W.G., K.G., A.T.H., I.B.H., M.-F.H., K.K.H., J.L.J., S.H.K., L.M.L., S.S.L., R.J.F.L., R.C.W.M., C.M., N.M., J. Molnes, S.M., V.M., R.M., R.O., K.R.O., S.E.O., E.R.P., W.P., T.I.P., R.P.-B., R.E.P., L.M.R., M.J.R., R.M.R., R.K.S., J.L.S., E.K.S., A.S., T.T., M.S.U., K.K.V., T.V., R.W., S.S.R. and P.W.F. wrote the manuscript. J. Merino, M.-F.H., S.S.R. and P.W.F. revised the manuscript. All authors reviewed and approved the submitted version of this manuscript.

#### Additional information

**Peer review information** *Nature Medicine* thanks Sisse Ostrowski and the other, anonymous, reviewer(s) for their contribution to the peer review of this work. Primary Handling Editor: Joao Monteiro, in collaboration with the *Nature Medicine* team.

**Reprints and permissions information** is available at [www.nature.com/reprints](http://www.nature.com/reprints).

and small blood vessels. The disease is currently classified into several types of diabetes. The two most common forms are type 1 diabetes (T1D), an autoimmune disease accounting for ~2% of all forms of diabetes worldwide<sup>1</sup>, and type 2 diabetes (T2D), which accounts for most of the remaining cases. Rare ‘monogenic’ forms of diabetes also exist, with gestational diabetes mellitus (GDM) being an additional category (Box 1). A major challenge with most diabetes is that it is heterogeneous in etiology, clinical presentation and prognosis. Understanding and leveraging this heterogeneity is a core objective of precision diabetes medicine (Fig. 1).

This second international consensus report from the Precision Medicine in Diabetes Initiative (PMDI) summarizes the comprehensive systematic reviews and resulting consensus among the PMDI consortium for the pillars of precision medicine prevention, diagnosis, treatment and prognosis<sup>2</sup> across monogenic diabetes mellitus (MDM), GDM, T1D and T2D<sup>3–16</sup> (Fig. 2). The objectives of the PMDI consortium were to identify (1) where current evidence supports the application of precision approaches in diabetes prevention and care, and (2) key gaps where additional and/or higher quality evidence is needed before precision medicine can be implemented. Areas of consensus for these objectives are reflected in key milestones put forth to support the evidence-based and scalable implementation of precision diabetes medicine within the next decade.

The PMDI was established in 2018 by the American Diabetes Association (ADA) in partnership with the European Association for the Study of Diabetes to address the untenable health and economic burdens of diabetes prevention and care<sup>17</sup>. The first consensus report on precision medicine in diabetes published in 2020 (ref. 2) highlighted that precision medicine involves tailored diagnostics or therapeutics (for prevention or treatment) applied to population subgroups sharing similar characteristics, thereby minimizing error and risk while maximizing efficacy (Box 2). Four key pillars of precision medicine were also defined: prevention, diagnosis, treatment and prognosis, which can be applied throughout the life course (Fig. 3).

The data inputs, technologies and tools for subgroup characterization are incredibly diverse and readiness for valid and cost-effective implementation in diabetes medicine varies widely. The first consensus report concluded with a call for a rigorous review elucidating effective precision medicine strategies, areas of promise and notable gaps across MDM, GDM, T1D and T2D to inform an evidence-based road map to optimize the integration of precision medicine into the global response to the diabetes crisis.

The key findings of this second consensus report are that, within the areas examined, several actionable and near-actionable examples of precision diabetes medicine exist. However, the quality of data is generally low, and few studies have been explicitly designed to test precision medicine hypotheses. There is also a dearth of relevant, high-quality research in people of non-European ancestry, hindering the development and implementation of precision diabetes medicine in many of the most heavily burdened populations worldwide.

## Evidence evaluation process

After the first consensus report in 2020 (ref. 2), the PMDI executive committee established the PMDI consortium to represent each of the precision medicine pillars within the four types of diabetes across 15 working groups. The consortium comprises >200 clinical and research investigators across all career stages and domains of diabetes expertise, residing in 28 countries across four continents (see author list). A separate cross-cutting methodology working group provided critical training and guidance and the executive committee provided strategic direction and administrative oversight. The working groups were supported by administrative staff (C.G., E.M., P.S.) and medical librarians (M.B., K.A.).

Working groups were tasked with defining the key research questions that would need to be addressed for precision diabetes medicine to be implemented into practice by 2030. The first consensus report opted for this specific timeline to instill a sense of urgency while allowing time for proof-of-conduct research to be undertaken.

Systematic literature review protocols were developed by the working groups for the priority research questions, with principles for procedure, synthesis and consensus reporting outlined by the methodology working group to ensure a rigorous and consistent process. Working groups were permitted to generate expert opinion statements for hypotheses that did not reach the level of priority for a full systematic review. All systematic review protocols were prospectively registered on the PROSPERO database<sup>18,19</sup>. The full methods, results and working group conclusions are described in the individual systematic reviews<sup>3-16</sup>.

## Synthesis of evidence

The following summarizes the results and synthesis reported in the supporting series of systematic evidence reviews from the PMDI consortium for the second consensus report<sup>3-16</sup>.

### MDM

MDM results from a mutation in a single gene<sup>20</sup>. It can be diagnosed in the neonatal period (neonatal diabetes) or typically, but not exclusively, before the age of 45 years. MDM diagnosed outside the neonatal period has historically been known as maturity-onset diabetes of the young. There are autosomal dominant, recessive and maternally inherited forms as well as varieties that arise from de novo mutations and chromosome abnormalities<sup>20</sup>. Although MDM is rare, collectively it accounts for up to 5% of diabetes and presents opportunities for precision medicine<sup>20</sup>. Despite the clinical benefits of making a diagnosis of MDM, many patients are misdiagnosed with T1D or T2D owing to overlapping clinical features.

### Precision diagnosis.

We systematically reviewed the evidence underpinning two priority questions for precision diagnosis of MDM<sup>7</sup>: (1) who should be tested, and (2) how should they be tested? Our eligible literature review included 98 studies among pediatric or adult populations of testing criteria and 32 studies of testing methods among individuals with suspected neonatal diabetes mellitus or MDM.

Based on our evidence synthesis, the data support precision diagnostics testing for (1) neonatal diabetes in all infants aged <1 year diagnosed with diabetes, (2) MDM in individuals aged <30 years without obesity who are islet cell autoantibody-negative with detectable C-peptide, (3) *GCK*-related hyperglycemia in women with GDM without overweight or obesity and fasting glucose >5.5 mmol l<sup>-1</sup> and (4) *GCK*-related hyperglycemia in young individuals without obesity with persistent mild fasting hyperglycemia regardless of family history. Ethnic-specific body mass index (BMI) thresholds should be used to determine overweight and obesity.

Testing modalities include the use of (1) targeted next-generation sequencing for neonatal diabetes and MDM, (2) targeted genetic panels with all known causes of MDM, including mitochondrial diabetes, detection of known noncoding mutations, and copy-number variants, (3) a comprehensive panel that includes all recessively inherited genes, particularly in populations with high rates of consanguinity, (4) a separate multiplex ligation-dependent probe amplification assay for copy-number variants detection or genotyping assay (such as pyrosequencing) for detection of m.3243A>G, (5) a methylation-based assay, such as methylation-specific multiplex ligation-dependent probe amplification for neonatal diabetes testing, since 6q24 imprinting defects are a common cause of transient neonatal diabetes mellitus, and (6) rapid Sanger sequencing of *GCK* in suspected *GCK*-related hyperglycemia, and the *KCNJ11*, *ABCC8* and *INS* genes in suspected neonatal diabetes.

Additional considerations for causality, penetrance, reporting, disparities in testing access and barriers to genetic testing and follow-up of causal variant reporting were qualitatively reviewed. We noted a critical gap across the literature addressing access to genetic testing for MDM to mitigate health disparities, including concerns with replication and external validation in non-European ancestry populations. There was inconsistent measurement of islet autoantibodies and C-peptide diabetes diagnosis under the age of 45 years with ancestry-appropriate T1D genetic risk score data. We encourage the development of guidelines tailored to additional MDM types and genes, de-identified case-sharing platforms to gather the evidence to evaluate pathogenicity and deep mutational scanning maps of MDM genes for variant classification. The clinical guidance for genetic counseling, subsequent referrals and family testing, as well as research on the outcomes of implementation will also be essential to maximize precision diagnostic approaches for monogenic forms of diabetes.

### Precision treatment.

Precision treatment of MDM is potentially optimized by characterizing an individual's molecular genetic subtype and pathophysiology; thus, we reviewed the evidence for comparative effectiveness of therapies among populations with specific monogenic subtypes of  $\beta$ -cell diabetes and severe insulin resistance<sup>6</sup>.

Most diabetes that occurs at ages <6 months is monogenic neonatal diabetes. Sulfonylureas were recently established as the most effective treatment for neonatal diabetes due to a potassium channel mutation<sup>21</sup>. Our systematic review for the effects of noninsulin treatments included 19 studies in individuals with 6q24-related transient neonatal diabetes<sup>4</sup>; all studies graded as having moderate or serious risk of bias. In some, but not all, studies,

sulfonylurea use during the neonatal period improved diabetes outcomes, allowing cessation of insulin, and was well tolerated. Evidence for the efficacy of a variety of noninsulin therapies was more consistent later in life during a relapse phase. We reviewed 32 studies in individuals with *SLC19A2*-related neonatal diabetes, also known as thiamine-responsive megaloblastic anemia, all with moderate or serious risk of bias. Most studies described some potential benefits of thiamine, such as reduction or cessation of insulin use and/or improved glycemic control, with no reports of adverse effects. We concluded that the current evidence is low quality for clinical guidance on use of noninsulin therapy with 6q24-related diabetes or thiamine in thiamine-responsive megaloblastic anemia.

We evaluated the effects of therapies for *HNF1A* diabetes, *HNF4A* diabetes and *GCK*-related hyperglycemia reported in 34 studies, including four randomized controlled trials (RCTs). Sulfonylureas are effective specifically in *HNF1A* diabetes for glycemic control, more so than in individuals with T2D. For *HNF1A* and *HNF4A* diabetes, transitioning from insulin or other noninsulin therapies to sulfonylureas may improve glycemic control. Some experimental studies demonstrate glinides and glucagon-like peptide-1 receptor agonists (GLP1-RAs) may be alternatives to sulfonylureas for *HNF1A* diabetes, as well as dipeptidyl peptidase 4 inhibitors as augmentative therapy. For *GCK*-related hyperglycemia, published case series indicate that treatment should not be given and can be discontinued.

Monogenic disorders of severe insulin resistance include generalized lipodystrophy caused by mutations in *AGPAT2* and *BSCL2*, partial lipodystrophy with mutations in *LMNA* and *PPARG*, and pathogenic variants in the *INSR* gene. Safety and efficacy of recombinant human leptin (metreleptin) and thiazolidinediones were analyzed in populations with lipodystrophy syndromes and recombinant insulin-like growth factor-1 in *INSR* mutation carriers. Of 43 nonrandomized experiments and cause series included for review, most individuals had partial lipodystrophy, some had generalized lipodystrophy and few carried *INSR* mutations. This evidence had moderate or serious risk of bias. Response to metreleptin was described in subgroups with familial partial lipodystrophy and congenital generalized lipodystrophy, where treatment was related to lower triglycerides in aggregated lipodystrophy, partial lipodystrophy and generalized lipodystrophy, as well as those with *LMNA*, *PPARG*, *AGPAT2* or *BSCL2* mutations. HbA1c levels decreased in all but *AGPAT2*. Thiazolidinediones lowered triglycerides and HbA1c levels in aggregated lipodystrophy, and triglycerides in *LMNA* but not *PPARG*. Response to insulin-like growth factor-1, alone or in combination with IGFBP3, lowered HbA1c levels. There were very few adverse events reported for any therapies, possibly due to small samples sizes and underreporting.

### Precision prognosis

We reviewed evidence describing the incidence and severity of diabetes-related microvascular and macrovascular complications in populations with permanent neonatal diabetes due to pathogenic variants in *KCNJ11* and *ABCC8*, and MDM due to pathogenic variants in *HNF1A*, *HNF4A* and *GCK*<sup>6</sup>. Extra-pancreatic complications (for example, hepatic adenomas in *HNF1A* diabetes, developmental delay, epilepsy and neonatal diabetes syndrome) were beyond the scope of the review.

Individuals with most forms of MDM are at high risk of microvascular and macrovascular complications, impacted by poor glycemic control. Many studies focused on younger populations diagnosed with neonatal diabetes, where rates of severe microvascular complications were low. Their risk may be in part mitigated by improved glycemic control in neonatal diabetes related to pathogenic variants in the *KCNJ11* and *ABCC8* genes and *HNF1A* diabetes and *HNF4A* diabetes, where precision therapy with sulfonylureas is available. Additional long-term follow-up studies will be important to understand the natural progression of microvascular and macrovascular complications in permanent neonatal diabetes mellitus from mutations in *KCNJ11* and *ABCC8*.

From 78 articles, retinopathy and microalbuminuria were reported in cases with neonatal diabetes mellitus, but progressive retinopathy and severe renal disease were uncommon. Populations with isolated *GCK*-related hyperglycemia have overall very low rates of diabetes-related complications. Indeed, microvascular complications were very rare in cohort studies of populations with *GCK*-related hyperglycemia and prolonged disease duration (>50 years).

Recent studies of *HNF1A* diabetes reported lower rates of complications compared to those published earlier (for example, for retinopathy, 17% in recent versus 47% earlier; for cardiovascular disease (CVD), 7% in recent years versus 16% earlier). In recent studies, rates of microangiopathic complications observed were less than in T1D, although rates were similar or higher among these populations in older studies. More recent studies of patients with *HNF1A* diabetes and *HNF4A* diabetes show improved prognosis of diabetes microvascular and macrovascular complications, likely reflecting an earlier molecular diagnosis, tighter treatment targets and higher rates of precision therapy.

## GDM

GDM is abnormal glucose tolerance with onset or first recognition during pregnancy. GDM is the most common metabolic complication of pregnancy. Unlike most other forms of diabetes, the onset of GDM is rapid and typically resolves after delivery. Nevertheless, the short- and long-term health risks that GDM poses to the mother and offspring can be substantial, underscoring the importance of widely available screening, diagnosis and effective treatment.

**Precision prevention.**—We systematically reviewed results of 116 interventions on GDM prevention, including diet and/or exercise (diet  $n = 16$ ; exercise  $n = 17$ ; diet and exercise combined  $n = 59$ ), metformin ( $n = 13$ ) and supplements such as myoinositol/inositol, probiotics and fish oil ( $n = 12$ )<sup>9</sup>. We considered interventions initiated in the preconception or antenatal period and reporting GDM among its outcomes for prevention efficacy.

In our meta-analyses, lifestyle interventions led to lower incidence of GDM compared with control care: diet only by 25%, exercise only by 31%, and combined diet and exercise by 18% (moderate-to-low-quality evidence). Metformin reduced GDM by 34%, and myoinositol/inositol supplements by 61%; however, this evidence was rated very low quality. Only seven trials initiated interventions in the preconception period. Metformin

interventions implemented in the preconception period had better GDM risk reduction when compared to those initiated during pregnancy. For exercise-only interventions, greater risk reduction for GDM was seen in studies enrolling women with a BMI in the normal range. Combined diet and exercise interventions were more effective in GDM reduction among women with overweight or obesity, without polycystic ovary syndrome, without history of prior GDM and with advanced maternal age at pregnancy. Metformin was relatively more effective in preventing GDM among women with a history of polycystic ovary syndrome, with older maternal age and with higher fasting blood glucose at enrollment. Parity, education and employment status, race and history of having a large for gestational age infant did not appreciably impact the effectiveness of interventions. These findings came primarily from comparing effect estimates across trials with different participant characteristics rather than from within-study analyses stratified by participant characteristics. Overall, the strength of evidence for GDM risk reduction with the use of lifestyle modification, metformin and myoinositol/inositol is moderate to very low. Moreover, few data were available to determine which individual characteristics might predict who would benefit most from a given type of intervention.

Future research should include interventions in early pregnancy with sufficient sample size to assess GDM as a primary outcome as well as to provide results stratified by pertinent participant characteristics, including social and environmental factors, clinical traits and other novel risk factors to predict the effectiveness of GDM prevention programs.

**Precision diagnosis.**—The overarching goal of the GDM precision diagnosis working group was to review evidence of precision markers beyond glycemic level (that is, information about a person’s pathophysiology, environment and/or context) that might help refine the diagnosis of GDM. Through the lens of clinical translation, we investigated the evidence supporting GDM subtypes and etiologic or pathologic heterogeneity, as well as associations with adverse perinatal outcomes<sup>14</sup>. The systematic review and meta-analysis focused on observational studies evaluating maternal and fetal anthropometry, clinical and sociocultural/environmental risk factors, genetics, omics and nonglycemic biomarkers that could identify subgroups of individuals with diagnosed GDM at differentially higher risk of adverse pregnancy outcomes. Of 137 studies included, 68 studies evaluated maternal anthropometry as a potential modifier or precision marker related to pregnancy outcomes. The meta-analysis among a subset of studies reporting on maternal BMI in relation to risk for neonatal large for gestational age and/or macrosomia. Forty-nine studies evaluated maternal clinical or sociocultural factors, and 30 studies evaluated nonglycemic biomarkers, lipids and insulin sensitivity/secretion indices. Few studies incorporated fetal anthropometry (11 studies), risk-prediction models with multiple variables (six studies) or genetics/genomics and other omics (five studies).

Anthropometry measures were the most analyzed risk factor with outcomes among pregnancies complicated by GDM. Meta-analyses demonstrated that women with GDM and overweight/obesity have two to three higher risk for neonatal macrosomia or neonatal large for gestational age. Larger birth size is the leading risk factor for birth trauma (shoulder dystocia) and emergency C-section. Regarding nonglycemic biochemical markers ( $n = 33$  studies), lipids and insulin resistance or secretion indices were the most studied, with

elevated maternal triglycerides and insulin resistance generally associated with greater risk of neonatal large for gestational age and macrosomia; study findings were inconsistent. Studies reporting on genetics and omics were scarce. Few studies described risk-prediction models with multiple variables. Traditional GDM risk factors, such as advanced maternal age, parity, prior history of GDM or family history of diabetes, were not consistent markers of adverse perinatal outcomes in women with GDM. There was sparse evidence to support conclusions for the role of race, ethnicity or country of origin as precision markers, given high heterogeneity across studies, and that data interpretation is dependent on sociocultural context. Very few studies investigated diet, physical activity or psychological health as precision markers for diagnosis of GDM.

For most of the precision markers (other than BMI), it will be necessary to conduct validation and replication studies in adequately powered studies of people representing the diversity of target populations. For precision biomarkers, validated, standardized and affordable assays are required for broad adoption by clinical laboratories. There is a need to identify and test different clinical decision and management strategies if a precision diagnostic identifies a woman at high risk of perinatal complications. Finally, for modifiable precision markers (for example, lipid levels, insulin sensitivity), novel interventions should be developed and validated that specifically target these markers during pregnancy.

**Precision treatment.**—It is unknown whether precision treatment of GDM could improve maternal and/or offspring outcomes. We conducted a systematic review of evidence for precision markers of GDM treatment success to determine (1) which precision approaches in addition to standard of care can enable achievement of glucose targets with lifestyle measures alone, and (2) which characteristics predict whether glucose targets can be achieved in women treated with diet and lifestyle alone, and in women receiving oral agents<sup>10</sup>.

Only two studies reporting personalized approaches of tailoring lifestyle-based treatments in GDM met the inclusion criteria for review, with variable findings for prepregnancy BMI or excessive gestational weight gain as precision markers for intervention efficacy and implementation. For predictors of escalation with the need for pharmacological interventions, 48 studies were included, and 34 studies were included in meta-analyses. Precision markers for successful GDM management with lifestyle measures without the need for additional pharmacological therapy (insulin, metformin and/or glyburide; 34 studies) were (1) younger maternal age, (2) nulliparity, (3) lower BMI, (4) no previous history of GDM, (5) lower levels of HbA1c, fasting glucose and postchallenge glucose concentrations (at 1, 2 and 3 h), (6) no family history of diabetes, (7) later gestation of diagnosis of GDM, and (8) no previous macrosomia. Similar precision markers for successful treatment with metformin and/or glyburide without requiring supplementary insulin were found with the addition of later gestation of initiation of the oral agent (12 studies). Data were lacking to identify precision markers of responses to one agent versus another. Only two studies included genetics or omics as potential markers for treatment escalation. The studies were limited by the predominant focus on high-income settings and the small sample sizes.



Overall, based on findings from moderate-to-good quality, key maternal characteristics were identified that may be used to build prediction models for pharmacological GDM treatment. Precision markers for GDM treatment are usually available from routine clinical measures; however, it is unknown whether other precision markers could be identified (for example, genetics or omics) or whether these can be implemented in clinical practice. Future studies should be appropriately powered and designed to assess individual precision markers or algorithms incorporating multiple precision markers. Validation and replication in diverse populations are lacking and are also needed.

**Precision prognosis.**—GDM incurs health risks to both a mother and her offspring, not only during pregnancy and at delivery but also over the longer term. The systematic evidence evaluation focused on studies describing predictors of postpartum and long-term cardiometabolic outcomes in women with GDM and their offspring<sup>5</sup>. The evidence synthesis focused on prognostic endpoints of T2D and CVD for women with prior GDM, as well as anthropometric features and preclinical cardiometabolic biomarkers among offspring exposed to GDM in utero. We included 89 studies of which 55 reported on maternal outcomes (52 observational, three RCTs) and 45 reported on offspring outcomes (37 observational, eight RCTs).

Collectively, studies reported that women with a history of GDM are at higher risk of T2D and CVD, with a dose-dependent relationship between degree of pregnancy hyperglycemia and these outcomes. Similarly, offspring born to women with more severe GDM had more adiposity and higher risk of being overweight or of obesity across the life span. GDM severity was also associated with greater risk of incident T2D and CVD among women and with an unfavorable cardiometabolic profile in offspring later in life. Broadly, the relationships between GDM severity and the maternal/offspring outcomes were robust to adjustment for gestational week at diagnosis, offspring birth size and family-level socioeconomic status; however, failing to adjust for maternal BMI and lifestyle factors was a concerning source of bias for the relationships of GDM with offspring outcomes.

Some studies considered whether the type of treatment needed to achieve glycemic targets in women with GDM is a precision marker for long-term outcomes. Treatment with insulin, but not lifestyle, had a worse prognosis for both mothers and offspring; however, this apparent effect could be due to the prescription of insulin when GDM is ‘more severe’, which may be partly due to confounding by indication. Unfavorable maternal and child outcomes associated with GDM history (exposure) were modified by lifestyle. For maternal outcomes, the primary risk mitigators were healthy diet and regular moderate-to-vigorous physical activity. For offspring outcomes, the offspring’s diet and physical activity modified cardiometabolic risk. Greater exclusivity and longer duration of breastfeeding attenuated cardiometabolic risk among GDM-exposed offspring, although this literature was less robust than that for reduction of the risk for T2D in breastfeeding women with prior GDM. There is presently very limited evidence about the role of omics biomarkers and polygenic scores (for T2D or CVD) in women with prior GDM.

Despite the above insights, studies regarding GDM prognostic factors indicative of future maternal and offspring cardiometabolic health are generally low quality. Most current

literature describes retrospective studies leveraging registry data and observational cohort studies; inferring causal relationships from these data about prognostic factors is hampered by risk of confounding and reverse causation (attributable, for example, to preexisting conditions and other pregnancy characteristics).

## T1D

T1D results from autoimmune-induced destruction of the pancreatic  $\beta$ -cells, requiring insulin treatment for survival. While representing ~2% of all forms of diabetes worldwide<sup>1</sup>, T1D has a large healthcare cost owing to the early age at onset for many affected, the high cost of insulin and related technologies (insulin infusion pumps, continuous glucose monitors (CGM), hybrid closed loop systems) and elevated risk of both microvascular and macrovascular complications. Growing insights into the pathogenesis of T1D motivated the classification of the disease in different stages, with stage 0 being presence of 1 autoantibody in people at high genetic risk, stage 1 and 2 being the presence of two or more islet autoantibodies in normo- (stage 1) or dysglycemia (stage 2) and clinical diabetes (stage 3). Etiologic heterogeneity is recognized in both children and adults.

**Precision prevention.**—A key question in T1D is whether individual characteristics or biomarkers can be used to identify those most likely to respond to disease-modifying therapy before clinical T1D onset (stage 3). We conducted a systematic review of RCTs focused on the identification of features associated with treatment response published over the past 25 years<sup>13</sup>. Multiple trials were identified that compared disease-modifying agents, mostly immunotherapies, to placebo. A formal meta-analysis was not conducted given the heterogeneity of interventions and approaches. Of 75 manuscripts extracted for review, 15 described prevention trials with the remainder focused on treatment in the recent- or stage 3-onset period.

Prevention trials generally enrolled individuals at elevated genetic risk, typically based on the presence of a first-degree relative with T1D and/or with islet autoimmunity, with or without changes in  $\beta$ -cell function (stages 0 to 3). Studies commonly used time-to-diabetes as an outcome. Stage 3 studies used more consistent eligibility criteria and frequently tested C-peptide area under the curve as a primary outcome. Fifty-seven studies, including primary trials and longitudinal follow-up of trials, performed precision analyses, specifically testing features associated with treatment response. Analyses tested the associations of many features with treatment response, most commonly age, measures of  $\beta$ -cell function and/or an immune phenotype.

Overall, the RCTs received high-quality ratings and were graded to have a low risk of bias; however, precision prevention analyses had lower quality rankings. Reasons for this were that studies typically did not prespecify an analytic plan, had inconsistent reporting of key methodologic details (for example, sample size or a correction for multiple comparisons) and tended to report only positive (that is, statistically significant) findings. There is large interest in precision features associated with treatment response to disease-modifying therapy in T1D; however, most analyses were exploratory without follow-up with prespecified prospective analyses.

We recommend that future studies are powered to undertake multiple prespecified analyses to permit statistically robust testing of features associated with treatment response (for example, through stratified effects or biomarker–treatment interactions). These data will be required for the effective identification and implementation of precision approaches to disease-modifying therapies.

**Precision diagnosis.**—Islet autoantibodies are validated predictors of disease progression and are being incorporated into clinical practice. We focused this systematic evidence review<sup>13</sup> on determining whether autoantibodies help stratify subgroups across four settings: (1) disease progression before stage 3 diagnosis, (2) disease presentation/stage 3 diagnosis, (3) disease progression after stage 3 diagnosis and (4) response to disease-modifying interventions.

We identified 151 publications, 90 relevant to progression before stage 3, 44 for heterogeneity at stage 3, 11 for progression after stage 3 and 13 for interventions. While insulin autoantibodies are commonly the first to appear before diagnosis in younger children, the presence of IA-2 autoantibodies corresponds with faster disease progression. Interactions between high-risk HLA alleles (for example, HLA-DRB1\*03:01 and HLA-DRB1\*04:01), the number and types of islet autoantibodies, and age at seroconversion are most often used in models (or added to existing models) to predict disease. The replacement of traditional radio-binding assays with electrochemiluminescent assays improved the sensitivity of some autoantibody testing and identified high-risk subgroups (individuals with two or more autoantibodies) who were previously low risk (positive for a single autoantibody).

At stage 3 diagnosis, the presence of specific autoantibodies correlated with age, suggesting that the inciting antigens are different in younger, compared to older, individuals. The primary antibodies at seroconversion often disappeared at the time of stage 3 diagnosis. There was weak evidence that declining islet autoantibody titers and the number of autoantibodies after stage 3 diagnosis corresponded to preserved residual C-peptide level, thereby not supporting the use of islet autoantibodies to define heterogeneity in metabolic outcomes. Evidence of islet autoantibody features to predict response to disease-modifying therapies was modest, making the impact of a specific antigen (and its corresponding autoantibody) less significant. For clinical implementation, the grade of evidence is limited by the reports (1) being mainly from European ancestry populations, (2) rarely correcting analyses for multiple comparisons, (3) consisting of observational measurements from RCTs limited to observational endpoints and (4) inconsistently reporting on assay methods and validation.

These results suggest that islet autoantibodies are useful to define heterogeneity in T1D before stage 3 diagnosis, and that benefit will be gained by incorporating age and genetics into risk scores. Thoughtfully designed, prospective trials are needed to apply these observations and develop precision medicine approaches to diagnosis and treatment. In a corresponding paper<sup>13</sup>, a methods checklist is proposed to ensure reproducibility and applicability of islet autoantibody-based research.

**Precision treatment.**—Treatment of clinical, stage 3 T1D includes insulin therapy, adjunctive agents, nutrition, exercise, behavioral health, glycemic targets and transitions of care; however, in the last decade, the major development for people living with T1D has been in technology. This systematic evidence review focused on whether diabetes management technologies impact clinically relevant outcomes, based on differences between subpopulations<sup>11</sup>.

A systematic review of 71 peer-reviewed RCTs and related secondary/extension studies with at least 50 participants from the past 10 years concluded that novel technologies (ranging from isolated CGM, decision-support tools, continuous subcutaneous insulin infusion pumps, to advanced hybrid closed loop systems) have resulted in lower HbA1c levels, increased CGM-defined time-in-range glucose between 70–180 mg dl<sup>-1</sup>, reduced hypoglycemia risk and improved person-reported outcomes. The broad array of technologies permits the application of individualized treatment plans for people living with T1D but limits cross-trial comparisons or meta-analyses. CGM use among very young children reduced the risk of hypoglycemia and lowered parental distress while having minimal impact on HbA1c level and time-in-range when compared to self-monitoring of blood glucose. Technologies that include sensor-augmented pump therapy, predictive low glucose suspend pumps and automated insulin-delivery systems improved hypoglycemia, time-in-range and HbA1c levels across all age groups. Age of the individual should be considered in clinical decisions related to technology use. Variation in baseline glycemic status (for example, suboptimal versus targeted HbA1c level) did not consistently impact these outcomes.

Important limitations of published trials were identified. There is limited availability of preplanned or well-powered analyses in subgroups (for example, children, older adults or people with advanced complications). While the quality of evaluated RCTs is high with a low risk of bias, high-quality data related to these subpopulations is needed, and results are considered exploratory until appropriately powered studies are conducted and findings are adjusted for multiple comparisons. Confounding variables, including (1) access to technologies, (2) education with device initiation, (3) concomitant behavioral modifications and (4) frequent contact with the healthcare team are rarely described in enough detail to assess their impact.

**Precision prognosis.**—The landmark Diabetes Control and Complications Trial demonstrated that intensive glucose control effectively prevents microvascular complications in individuals with uncomplicated and recent-onset T1D (<5 years), as well as those with more than 5 years since diagnosis and mild nonproliferative diabetic retinopathy<sup>22,23</sup>. However, glucose control accounts for only 50% of T1D complication risk<sup>24–27</sup>. Moreover, certain subgroups, including the elderly, young children and people with hypoglycemia unawareness or autonomic neuropathy, may be harmed from severe hypoglycemia resulting from tight glucose control<sup>28</sup>. This highlights the importance of identifying additional nonglycemic interventions to mitigate complication risk for all people living with T1D.

Epidemiological studies have identified additional (epi-)genetic, biological and phenotypic traits in people with T1D at higher risk for kidney, eye and neurological complications

and a worse prognosis. Presence of risk factors traditionally associated with CVD and T2D such as overweight, dyslipidemia, hypertension and smoking also contribute to the development of advanced stages of kidney disease, peripheral neuropathy, retinopathy and CVD in T1D<sup>25,29–31</sup>. Although cholesterol and blood pressure levels outside of current clinical targets increase complication risk in T1D<sup>32,33</sup>, T1D-specific recommendations are lacking.

Recent evidence has identified distinct changes in lipid and amino acid metabolism that predict earlier, more rapid kidney function decline in T1D<sup>34</sup>. Additionally, socioeconomic and psychological factors play a role in microvascular complications<sup>35–38</sup>. Although evidence from RCTs is absent, blood pressure control with renin-angiotensin-aldosterone system (RAAS) inhibition and the use of statins for hyperlipidemia are promising therapies against progression to hard endpoints (for example, end-stage renal disease or CVD); however, there is a scarcity of evidence that precision medicine alters prognosis in T1D.

A rare example of precision prognosis in T1D relates to the haptoglobin (*HP*) genotype. In the Diabetes Control and Complications Trial/Epidemiology of Diabetes Interventions and Complications study, coronary artery disease (CAD) risk was comparable between the intensive and conventional therapy groups with the *HP*2–2 genotype<sup>39</sup>. CAD risk was greatly reduced with intensive therapy in noncarriers of *HP*2–2. Similarly, although better glycemic control was associated with lower CAD incidence in the EDC study, a residual risk related to *HP*2–2 was observed<sup>39,40</sup>.

After the Diabetes Control and Complications Trial, there has been little evidence from RCTs for evaluating the impact of tight glycemic control in specific subgroups with respect to complications; however, clinical precision medicine is utilized in the prognosis and choice of therapy for people with T1D. More sophisticated decision tools, based on deeper genetic and phenotypic profiling in multi-ethnic cohorts are needed to improve personalized prognosis in T1D.

## T2D

Approximately 500 million people worldwide are estimated to have T2D<sup>41</sup>, which is predicted to rise to 1.3 billion by 2050 (ref. 42). A diagnosis of T2D is one of exclusion, occurring when other plausible explanations for chronically elevated blood glucose have been considered and dismissed. This high degree of uncertainty and potential heterogeneity presents major challenges for the prevention and treatment of T2D.

**Precision prevention.**—Large-scale RCTs demonstrate that dietary or lifestyle interventions can delay the progression to T2D. However, there is large interindividual variability in response to preventive interventions<sup>43</sup>. Identifying predictors of response to interventions and the characteristics of people who would be most likely to benefit remain high priorities and are key focus areas for precision prevention in T2D<sup>15</sup>. This systematic review identified 33 trials focused on lifestyle interventions ( $n = 24$  studies), dietary modification ( $n = 4$  studies) and dietary supplementation ( $n = 5$  studies). From the 33 trials, there were 80 post hoc stratified analyses based on demographic, clinical, social or molecular factors.

Sociodemographic characteristics such as age, sex, race/ethnicity or socioeconomic status were not found to significantly affect response to intervention. We found evidence, albeit of low quality, that individuals with poorer health status at baseline, in particular prediabetes, tend to benefit more from lifestyle and dietary interventions than healthier individuals. Studies that stratified on body size at baseline reported inconsistent observations, with some showing that those with a lower BMI benefited more from intervention, whereas other studies found no difference according to body size. There was suggestive evidence that individuals who smoke and those with lower levels of physical activity at baseline benefited less from a lifestyle program, whereas no such interactions were reported for dietary or supplement interventions. There was little evidence that genetic factors or biomarkers attenuated or exacerbated the effects of these interventions.

Although our systematic review included intervention studies, most of which were RCTs with low risk of confounding, we evaluated certainty of post hoc stratification analyses. This suggested that statistical power was often limited. Further, most did not adjust for individual-level risk factors.

Although T2D can be prevented or delayed in tightly controlled clinical trials, adherence to lifestyle or diet modifications in real-world settings is often suboptimal. Thus, to maximize success of precision prevention interventions it will be important to incorporate methods tailored to the individual that enhance adherence.

**Precision diagnosis.**—In this systematic review<sup>8</sup>, evidence was assessed for optimization of T2D diagnosis through subclassification using (1) approaches involving ‘simple’ categorization of clinical characteristics such as biomarkers, imaging or other routinely available parameters and (2) ‘complex’ approaches involving machine learning applied to omic and genomic data.

Current data on the clinical value of T2D subclassification come predominantly from populations of European ancestry. Though glycemic measures are used to diagnose T2D, several nonglycemic measures were consistently applied to subclassify disease, including BMI, homeostatic model assessment of insulin resistance, C-peptide and lipid profiles.

Simple T2D subclassification approaches focused on data including pancreatic autoantibodies, BMI, measures related to pancreatic  $\beta$ -cell function, age at diagnosis, lipid profiles, oral glucose tolerance test measures and cardiovascular features. The study designs, specific cutoffs and outcomes were heterogeneous, with no study replicated or meeting high Grading of Recommendations Assessment, Development and Evaluation (GRADE) quality.

Complex approaches yielded some reproducible subtypes of T2D. The most frequently replicated subtypes were the clusters first described by Ahlqvist et al.<sup>44</sup>, which were replicated in 22 studies, including people of diverse ancestries. These studies used k-means clustering applied to exposures assessed close to diabetes diagnosis: age, HbA1c, BMI, homeostatic model assessment of  $\beta$ -cell function, homeostatic model assessment (2) of insulin resistance and GAD-65 antibody. The four nonautoimmune diabetes subtypes described were severe insulin-deficient diabetes, severe insulin-resistant diabetes, mild

obesity-related diabetes and mild age-related diabetes. Associations of these subtypes with clinical outcomes, including glycaemia, microvascular and macrovascular outcomes and death, were replicated in 12 studies. There was also replication of genetic subtypes of T2D from Udler et al.<sup>45</sup>, with associations with clinical features seen in multiple cohorts of European ancestry.

Subclassification strategies for T2D have been associated with meaningful clinical outcomes. However, evidence supporting the clinical application of these subclassification approaches is of moderate quality at best. Further ancestry-inclusive and high-quality evidence is needed. In contrast to simple approaches, the clinical application of machine-learning-derived approaches may require real-time computation of subphenotype classification of an individual with T2D, and necessary computing resources may be unavailable in some settings.

### **Precision treatment.**

This systematic evidence review<sup>3</sup> focused on two of the most recently introduced antihyperglycemic drug classes, SGLT2 inhibitors (SGLT2i) and GLP1-RAs. These drugs have been shown in RCTs to not only reduce glycemia but also to lower the risk of renal and CVD outcomes among high-risk individuals with T2D. Other therapeutics were not included in this evaluation owing to the complexity and volume of this literature.

The population of those with T2D is heterogenous in its demographics, clinical features and prognosis; thus, there may be differences in response to one or both of these drug classes. A systematic review was conducted to identify individual-level demographic, clinical or biological biomarkers associated with heterogeneous glycemia, CVD and renal outcome in individuals with T2D treated with SGLT2i or GLP1-RA.

For SGLT2i, 339 full-text articles were screened, which yielded 101 studies for evaluation; for GLP1-RA, 161 full-text articles were screened, yielding 75 studies for evaluation. These studies predominantly represent secondary analyses of industry-funded, placebo-controlled trials, or meta-analyses of these trials, with a few observational studies. The most common stratification variables were demographics, baseline HbA1c, obesity and preexisting CVD or nephropathy.

Overall, limited evidence was found for robust modification of the effects of GLP1-RA or SGLT2i on glycemia, renal or CVD outcomes by these features. For SGLT2i, reduced baseline renal function was associated with lesser glycemic response, while a higher baseline HbA1c level was associated with greater glycemic response. For GLP1-RA, a lower  $\beta$ -cell function was associated with a lesser glycemic response. Generally, the strength of evidence was modest, largely reflecting a lack of studies designed and sufficiently powered to address the question of treatment effect heterogeneity.

**Precision prognosis.**—This systematic review included a meta-analysis<sup>16</sup> to combine evidence from longitudinal studies of individuals with T2D for markers predicting CVD and evaluated their predictive utility beyond current practice. After full-text review, 416 studies

were analyzed with 77% focusing on nongenetic biomarkers, 12% on genetic biomarkers and 11% on risk scores.

There were 195 novel nongenetic biomarkers for CVD, of which 134 (69%) had a net positive number of studies showing a significant adjusted association. Of these, 12 biomarkers showed improvement in c-statistic, net reclassification index or integrated discrimination index consistently in more than one study. Considering the results of our pooled meta-analyses, nonpooled analyses, evidence for improved prediction performance indicators and risk of bias, we found high predictive utility for N-terminal pro b-type natriuretic peptide (high evidence), troponin T and triglyceride-glucose (moderate evidence), moderate predictive utility for coronary computed tomography angiography and single-photon emission computed tomography (low evidence) and pulse wave velocity (moderate evidence), and low predictive utility for C-reactive protein (moderate evidence), coronary artery calcium score, galectin-3 (Gal-3), troponin I, carotid plaque and growth differentiation factor-15 (low evidence).

Among the 48 genetics studies, 79 genetic biomarkers were evaluated for CVD outcomes, 29 having a net positive number of studies with a significant association. Three genetic biomarkers demonstrated promise: rs10911021 in *GLUL*, genetic risk score (GRS) for CAD and isoform e4 in *APOE*. Only the GRS for CAD showed improvement in all three performance indicators in a single study. A few studies employed different GRSs using up to 204 variants from 160 distinct loci derived from the general population that were externally validated, demonstrating improvements in CVD risk reclassification and significant enhancements in discrimination indices. Most studies, however, were conducted in European ancestry populations, with a few of Asian ancestry and very little or no representation of most other ethnicities. Some studies report a relative integrated discrimination index >6%, suggesting adequate predictive utility for the GRS for CAD, but this will need to be confirmed in appropriately designed ad hoc trials, to confirm clinical utility and transferability to other ancestries.

Risk scores showed overall modest discrimination, and model performance tended to decline when validated in countries that differed from the derivation cohort. Most studies focused on baseline characteristics and did not account for time-varying factors that may modify CVD risk, such as medications.

In summary, the highest predictive utility was found for N-terminal pro b-type natriuretic peptide, troponin T, triglyceride-glucose and GRS for CAD, with NT-proBNP having the highest level of evidence. Prospective studies evaluating prognostic biomarkers and risk scores as clinical decision-support tools in T2D are scarce, as is information on their cost-effectiveness. Our findings illustrate the need for development and validation of prognostic markers for CVD in diverse populations of people with T2D to promote equity in precision diabetes care.



## Consensus on implementation of precision diabetes medicine

The PMDI consortium working groups convened over two in-person meetings to deliver consensus across the precision medicine pillars and diabetes domains. Their main objectives were identifying evidence to support immediate clinical applications of precision medicine approaches and the gaps to address otherwise. Although the framework we outlined using the pillars of precision medicine may help structure approaches in research and practice, there will be overlap between pillars in some settings. For example, ‘precision diagnostics’ may focus on identifying diabetes subtypes that are treatment-dependent, and within ‘precision prognostics’ there may be elements of ‘precision prevention.’ Thus, while these pillars may help with implementation of precision medicine in both research and practice settings, they should not be considered monolithic.

### Promising applications of precision medicine in diabetes

Through the systematic reviews of prioritized diabetes research questions, we identified cases where the available evidence supports the use of a precision medicine approach. Research for MDM has witnessed progress for precision diagnosis, underscored by major advances in the availability and affordability of next-generation sequencing technologies for genetic testing.

In women with a GDM pregnancy, factors reflecting severity of GDM, including higher serum glucose values or the number of time points with elevated serum glucose at the diagnostic oral glucose tolerance test, earlier gestational age at diagnosis and insulin treatment requirement predicted GDM treatment success and risk of long-term prognostic outcomes for mother<sup>46</sup> and offspring<sup>47</sup>. Precision prevention, diagnosis and treatment research should leverage information provided by readily available clinical measures to support GDM care. Published evidence shows that maternal BMI, insulin sensitivity and secretion and dyslipidemia may enhance precision diagnostic tools<sup>14</sup>. Beyond this, there is a need for further research to develop and validate algorithms predicting GDM treatment success or risk of complications using traditional clinical factors possibly combined with novel markers such as metabolomics, paving the way for precision treatment and prognosis tools.

In T1D, clinical prevention strategies are increasingly informed by the primary etiology and progression in those at elevated genetic risk. Recent approval by the US Food and Drug Administration (FDA) of an anti-CD3 monoclonal compound (teplizumab) for use in stage 2 T1D has provided evidence of slowing, if not blocking, disease progression. Heterogeneity in response to preventive therapies represents a major opportunity for research and clinical investigation. In T1D, genetic risk has been defined largely using data from pediatric-onset populations of European ancestry individuals, aiding the development of GRS in this group that, when coupled with islet autoantibody testing, predicts disease development and aids diagnosis.

Precision medicine in T2D includes refining the subclassification of diabetes into pathophysiologically and clinically meaningful disease subtypes<sup>44</sup> or the development of probabilistic scoring algorithms to assert likely ‘archetypes’<sup>48</sup>. The methods and data

inputs to these derivations are diverse, often with machine learning unsupervised clustering methods applied to clinical and genomics or other omic data. The application of such approaches to the clinical setting is likely to require further refinement of classification models, as only about a third of people with diabetes can be reliably subclassified currently, and people tend to drift between diabetes subtypes as their disease progresses<sup>48</sup>, making longer-term prognosis challenging. The most promising precision approaches to T2D treatment, however, are to use individual patient-level features to predict differential treatment outcomes<sup>49</sup>. There is now robust evidence that routine clinical features and pharmacogenetic biomarkers alter glycemic response for all major drug classes after metformin, supported by the recent prospective TriMaster trial<sup>50</sup>. Development of treatment decision-support tools prioritizing routine clinical features would provide a low-cost and equitable approach to T2D precision treatment that may be of special utility in global regions where access to essential diabetes medications is very limited.

## Research gaps to accelerate precision medicine in diabetes

A key finding of this consensus report is that trials explicitly designed to test precision medicine hypotheses are needed, particularly those that yield clinically translatable findings. Incorporating trials explicitly designed to test precision medicine hypotheses in the drug development pipeline will be important if treatment recommendations for these drugs are to be meaningfully optimized. For this to succeed, engagement with regulatory authorities will be required. These and other supporting studies should consider whether markers of treatment heterogeneity are part of causal process, or noncause predictors of such effects. Although noncausal markers may be adequate for the purpose of prediction, where the marker is the intervention target, it should lie on the causal pathway. Determining causal mechanisms will also be important in research focused on understanding biological heterogeneity and interactions, which may, for example, include novel target discovery efforts.

As much of the current precision diabetes medicine research has been conducted in people of European ancestry living in high-income settings, there is a pressing need to broaden the scope to include other ethnic, geographic and cultural groups, particularly those who are most vulnerable. Correspondingly, there is also a need to better understand the impact of precision medicine on disparities, to help ensure gaps are closed and not inadvertently widened.

Across the pillars of MDM, there is a need to develop improved differential diagnosis of MDM that can masquerade as either T1D or T2D. As MDM encompasses several genetic variants in genes involved in glucose metabolism, it is important to consider complementary approaches for clinical translation, including genetic counseling, cascade testing and open sharing of confirmed mutations in a standardized global platform. More studies are needed to determine the efficacy of treatments for specific monogenic forms of diabetes, with focus on extra-pancreatic effects of MDM.

GDM is heterogeneous in etiology and prognosis, arguing for more precise prevention, diagnosis and treatment, as well as continued investigation of prognostic implications in

both women and offspring throughout the life course. The clinical translation of precision medicine in GDM will require new studies that test precision interventions targeting the physiological processes characterized by these biomarkers; such studies will also need to demonstrate improved health outcomes in women and/or their offspring. Dynamic biomarker assessments in pregnancy and postpartum will also be required, ideally with point-of-care testing, since GDM, unlike other types of diabetes, unfolds and exerts its effects rapidly. Many GDM prevention trials have intervened relatively late in pregnancy and reported variable outcomes on maternal and offspring health<sup>51</sup>. Interventions starting in early pregnancy or preconception may be more impactful; success in identifying who should be the focus of interventions, the specific nature of those interventions and when they should occur may be enhanced by precision prediction models. Because the impact of the intrauterine environment on the fetus is plausibly mediated by epigenetic modifications to fetal deoxyribonucleic acid, the characterization of cell-free fetal deoxyribonucleic acid using maternal plasma<sup>52</sup> may prove useful in the development of precision GDM medicine. This would also facilitate identification of fetal carrier status for pregnant women with MDM, potentially aiding management decisions.

With T1D, there is substantial heterogeneity in age, presence and type of islet autoantibodies, and genetic risk in those who transition to clinical (stage 3) disease, impacting diagnosis and prediction. Critical gaps remain in both non-European ancestry and adult-onset groups. Although improved glycemic control has aided in the reduction of proportion and impact of complications of T1D, evidence suggests that not all groups benefit from tight glycemic control, in part due to the risks associated with hypoglycemia. For T1D, the most promising areas for immediate clinical implementation include genetic risk classification, screening for islet autoantibodies (particularly at an early age and, potentially, later in life) and the ability to detect those at risk of progression, thereby affording the opportunity to utilize an immune intervention to delay or prevent progression to stage 3 T1D, recognizing that such therapies must also be cost-effective. Continued development of pharmacologic agents and technologies to minimize risk of microvascular and macrovascular complications in those living with T1D remains essential. Further, the availability of an effective and cost-effective disease-modifying intervention for early detection and prevention in those at risk, with use of better therapeutics, and recommendations for control of microvascular and macrovascular complications is essential in those living with T1D.

As with many other areas of precision diabetes medicine, much of the evidence for T2D precision medicine is of weak quality, focusing mainly on populations of European ancestry, and with a dearth of adequate validation. Papers reporting studies on precision medicine in T2D that claim translational potential often lack key metrics to allow benchmarking against current standards of care such as measures of predictive accuracy and cost-effective analyses. There is also a need for prospectively designed precision medicine trials that focus on validating key hypotheses pertaining to, for example, a stratified treatment response.

## Road map and milestones for global precision medicine in diabetes

Recommendations, derived from the systematic reviews underpinning this consensus report and through two in-person consensus meetings, are shown in Table 1.

### Reporting precision medicine research

Barriers to determining the clinical relevance of published research for precision diabetes medicine are that published reports rarely provide key details regarding a priori hypotheses, statistical tests for heterogeneity, number of events observed, statistical power to evaluate interactions, and more. Often these metrics are unclear, leading to misinterpretation of results. This has been the case with some of the diabetes subtyping that relies on hard clustering methods, where the individual-level probabilities of a person having a specific diabetes subtype are often low, such that treating a person based on their ‘subtype’ would often be ineffective. Nevertheless, much of the popular narrative has focused on using this type of subtyping to transform individual-level treatment.

Information that should be described in precision medicine research publications, particularly when citing evidence said to be of relevance for clinical translation, includes:

1. Measures of discriminative or predictive accuracy and calibration accuracy (both ideally in independent datasets) of precision medicine models
2. Measures of variance and central tendency
3. Effect estimates and risk ratios with 95% confidence intervals (not merely *P* values)
4. The units underlying effect estimates and risk ratios (for example, mmol/allele or risk/allele)
5. For unsupervised clustering, classification probabilities (for example, relative entropy statistic)

The use of machine learning and deep learning is becoming increasingly popular in precision medicine-facing research. However, as population-specific features (including prevalence of diabetes, risk factors and cultural and lifestyle features) are important in determination of diagnosis, treatment and prognosis, these algorithms need to be tailored to the community being served. In addition, it is often not possible to determine how outputs from such models were derived, which may increase the risk of misinterpretation or inadequate understanding of the potential risks associated with deployment of algorithms in clinical practice. Thus, methods to interpret and validate results from machine-/deep-learning models are likely needed for the safe and meaningful translation of precision medicine research into clinical practice.

### Regulatory requirements

The successful deployment of precision medicine may require regulatory bodies to adopt new approaches for product approval. This will entail new guidance about the processes for obtaining approval to commercialize new therapeutics and diagnostics, including when and under what circumstances the use of a new drug must be preceded by and/or accompanied

by a diagnostic or screening test. If the healthcare system is to secure the full benefits of precision medicine, it must provide full and fair reimbursement for new technologies, products and services, based on market principles to the extent possible.

Diagnostics include clinical decision-support software. In 2022, the FDA provided updated guidance on the regulation of this type of software<sup>53</sup>, which distinguishes between nondevice clinical decision-support software and software as a medical device with more stringent regulatory requirements. Software as a medical device is intended to provide high-level clinical decision-support software, have direct impacts on patient care and typically requires FDA clearance or approval before it can be marketed. On the other hand, nondevice clinical decision-support software does not require clearance; applying the criteria to distinguish between the two can be challenging. A new risk-prediction tool for CVD in people with T2D developed using machine learning in a large electronic health record dataset could qualify as either software as a medical device or nondevice clinical decision-support software. The tool may guide clinical decision-making, which would qualify more as a nondevice clinical decision-support software, but also has the potential to impact patient care by assisting in making treatment decisions for people at risk of developing CVD. If a risk score is considered nondevice clinical decision-support software, it will not require FDA clearance or approval, making the process of bringing it to market easier and faster. However, if it is considered software as a medical device, the regulatory requirements will be more stringent and the development process will likely be more costly and time consuming. Making a clear distinction between nondevice clinical decision-support software and software as a medical device is crucial for precision medicine, as the development and implementation of biomarkers, risk scores and other precision tools rely on the interpretation of the FDA guidance.

### Meeting standards of care

Diabetes is a multifaceted disease that is impacted by broad societal issues and has ramifications beyond the affected individual. Consequently, healthcare systems face significant challenges in providing effective and equitable care. While precision medicine promises to provide more personalized care for people at risk of and with diabetes, it requires effective implementation in healthcare systems to enhance disease prevention, management and prognosis. However, healthcare systems are currently struggling to provide care following current practice guidelines in diabetes. Gaps in adherence to current standards of care, which incorporate relatively simplistic personalized approaches, highlight the need for research to understand strategies for deploying precision medicine. While this may introduce additional levels of complexity if poorly managed, precision medicine may reduce complexity by improving or replacing suboptimally functioning processes and improving cost-effectiveness. Nevertheless, healthcare service optimization through precision medicine remains an understudied topic and represents an area in need of investment.

### Commercialization versus access

The commercialization of precision medicine through direct-to-consumer platforms or products for diabetes often involves complex trade-offs. Companies investing in precision

diabetes medicine need to protect their intellectual property with patents to prevent infringement. However, this can lead to high costs for recipients, potentially widening healthcare disparities. In addition, companies must ensure the financial viability of their products to continue research and development, which may lead to pricing barriers that restrict access for those most in need. To balance commercialization and accessibility, companies may need to make their products more affordable and accessible through partnerships with healthcare providers, insurers and government funding. Workflow complexity within the clinical environment is a barrier to commercialization; embedding precision medicine decision-support systems within the electronic medical record system may improve adoption by clinicians, but there may be additional proprietary considerations such as the electronic medical system record vendor requiring a share of the profits. Ultimately, achieving a balance between commercialization and accessibility is crucial, considering the ethical, social and economic implications of precision diabetes medicine approaches. The balance point will vary depending on the sociocultural setting where the product or service is deployed.

### Health equity and mitigating disparities

Precision medicine has the potential to improve health equity if the solutions it provides are optimized to the target populations, accessible to those in need, cost-effective and safe. Precision medicine solutions developed in one population may not transfer adequately to another<sup>54</sup>. Moreover, developing such solutions will require high-quality data for the target populations, as imprecise data are likely to obstruct the development of precision medicine. This is true of many technologies<sup>55</sup> and data of relevance to precision medicine. For example, at present, most genetic data and other omics data used in genome-wide studies of diabetes come from people of European ancestry living in high-income countries<sup>56</sup>, yet the burden of diabetes is growing most quickly in other regions and ethnicities<sup>41</sup>.

Although genomic medicine is an important component of precision medicine and is relatively easy to deploy owing to the robustness of deoxyribonucleic acid samples and the stability of a person's germline genetic variation across the life course<sup>57</sup>, overreliance on this single technology may contribute to inequities in health. This is because not all diabetes subtypes are equally heritable or understood<sup>58</sup>. This may be especially problematic in non-European ancestry populations, where genomics research is less advanced.

The systematic evidence reviews conducted as part of this report reinforce the need for increased ethnic, geographic and sociodemographic diversity in precision medicine research. Nevertheless, there are major genomic and precision medicine initiatives underway in some regions of Asia<sup>59</sup>, Africa<sup>60</sup> and the Middle East that will help offset this imbalance. On the other hand, most low- and middle-income countries currently lack adequately resourced and structured efforts to generate such data, despite a compelling rationale to develop precision medicine solutions for these populations. Thus, a key marker of the success of precision diabetes medicine will be its accessibility and cost-effectiveness where it is most needed; given that the burden of diabetes is growing most rapidly in the global south, the development and implementation of precision diabetes medicine in these regions should be prioritized.

## Liabilities

A precision medicine approach for diabetes should also consider potential liabilities. Liabilities could relate to both underutilizing recommendations, for example with an omission to assess for MDM in a person with a high-risk score, or potentially restricting access to certain treatments if underpowered subgroup analyses suggest limited utility. As precision medicine approaches should apply to all individuals at risk of, or living with, diabetes, the global implementation of these approaches will need to be shown as economically beneficial to the global community, a task that could be difficult in countries with historically limited resources allocated to healthcare. Further consideration of potential liability remains an area for ongoing evaluation.

## Future research priorities

Key future research priorities include (1) meta-analyses of existing clinical trials using individual-level data to ensure adequate power and re-analysis of existing trials with attention placed on determining treatment effect heterogeneity, (2) novel clinical trial designs to test a priori hypotheses regarding treatment heterogeneity, particularly those with two or more active comparators to inform clinically relevant decisions, (3) discovery and evaluation of novel genetic and nonstandard biomarkers and (4) integration of combinations of clinically accessible features to enhance prediction of response and selection of optimal therapies.

## Summary

Precision diabetes medicine is currently largely aspirational. Nevertheless, it is a potentially highly practical and economically viable alternative to current practices for diabetes prevention, diagnosis, treatment and prognostics, encompassing wide-ranging data about exposures and outcomes. In this second international consensus report, we summarize findings of 15 systematic reviews and expert opinions in prioritized areas of precision diabetes medicine. This effort was wide-reaching and multifaceted, yet of necessity not entirely comprehensive given the enormity of the diabetes field. The results show clear progress in the implementation of precision diabetes medicine, while illuminating many knowledge gaps. This review highlights the importance of specific diagnoses, and how etiological complexity and diagnostic uncertainty must be appropriately dealt with as part of this process. While precision diagnoses help determine treatment choices, there remains a great need for additional biomarkers and other signposts to guide precision prevention, therapeutics and prognostics. The dearth of data from non-European ancestry populations will need to be addressed to help ensure equity in precision diabetes medicine.

## Authors

Deirdre K. Tobias<sup>1,2,195</sup>, Jordi Merino<sup>3,4,5,195</sup>, Abrar Ahmad<sup>6,195</sup>, Catherine Aiken<sup>7,8,195</sup>, Jamie L. Benham<sup>9,195</sup>, Dhanasekaran Bodhini<sup>10,195</sup>, Amy L. Clark<sup>11</sup>, Kevin Colclough<sup>12,195</sup>, Rosa Corcoy<sup>13,14,15</sup>, Sara J. Cromer<sup>4,16,17,195</sup>, Daisy Duan<sup>18,195</sup>, Jamie L. Felton<sup>19,20,21,195</sup>, Ellen C. Francis<sup>22,195</sup>, Pieter Gillard<sup>23,195</sup>, Véronique Gingras<sup>24,25,195</sup>, Romy Gaillard<sup>26,195</sup>, Eram Haider<sup>27,195</sup>,

Alice Hughes<sup>12,195</sup>, Jennifer M. Ikle<sup>28,29,195</sup>, Laura M. Jacobsen<sup>30,195</sup>,  
 Anna R. Kahkoska<sup>31,195</sup>, Jarno L. T. Kettunen<sup>32,33,34,195</sup>, Raymond J.  
 Kreienkamp<sup>4,5,16,35,195</sup>, Lee-Ling Lim<sup>36,37,38,195</sup>, Jonna M. E. Männistö<sup>39,40,195</sup>,  
 Robert Massey<sup>27,195</sup>, Niamh-Maire Mclellan<sup>41,195</sup>, Rachel G. Miller<sup>42</sup>, Mario Luca  
 Morieri<sup>43,44,195</sup>, Jasper Most<sup>45,195</sup>, Rochelle N. Naylor<sup>46,195</sup>, Bige Ozkan<sup>47,48,195</sup>,  
 Kashyap Amratlal Patel<sup>12,195</sup>, Scott J. Pilla<sup>49,50,195</sup>, Katsiaryna Prystupa<sup>51,52,195</sup>,  
 Sridharan Raghavan<sup>53,54,195</sup>, Mary R. Rooney<sup>47,55,195</sup>, Martin Schön<sup>51,52,56,57,195</sup>,  
 Zhila Semnani-Azad<sup>2,195</sup>, Magdalena Sevilla-Gonzalez<sup>16,17,58,195</sup>, Pernille  
 Svalastoga<sup>59,60,195</sup>, Wubet Worku Takele<sup>61,195</sup>, Claudia Ha-ting Tam<sup>38,62,63,195</sup>,  
 Anne Cathrine B. Thuesen<sup>3,195</sup>, Mustafa Tosur<sup>64,65,66,195</sup>, Amelia S.  
 Wallace<sup>47,55,195</sup>, Caroline C. Wang<sup>55,195</sup>, Jessie J. Wong<sup>67,195</sup>, Jennifer  
 M. Yamamoto<sup>68,195</sup>, Katherine Young<sup>12,195</sup>, Chloé Amouyal<sup>69,70</sup>, Mette K  
 Andersen<sup>3</sup>, Maxine P. Bonham<sup>71</sup>, Mingling Chen<sup>72</sup>, Feifei Cheng<sup>73</sup>, Tinashe  
 Chikowore<sup>17,74,75,76</sup>, Sian C. Chivers<sup>77</sup>, Christoffer Clemmensen<sup>3</sup>, Dana Dabelea<sup>78</sup>,  
 Adem Y. Dawed<sup>27</sup>, Aaron J. Deutsch<sup>5,16,17</sup>, Laura T. Dickens<sup>79</sup>, Linda A.  
 DiMeglio<sup>19,20,21,80</sup>, Monika Dudenhöffer-Pfeifer<sup>6</sup>, Carmella Evans-Molina<sup>19,20,21,81</sup>,  
 María Mercè Fernández-Balsells<sup>82,83</sup>, Hugo Fitipaldi<sup>6</sup>, Stephanie L. Fitzpatrick<sup>84</sup>,  
 Stephen E. Gitelman<sup>85</sup>, Mark O. Goodarzi<sup>86,87</sup>, Jessica A. Grieger<sup>88,89</sup>, Marta  
 Guasch-Ferré<sup>2,90</sup>, Nahal Habibi<sup>88,89</sup>, Torben Hansen<sup>3</sup>, Chuiguo Huang<sup>38,62</sup>,  
 Arianna Harris-Kawano<sup>19,20,21</sup>, Heba M. Ismail<sup>19,20,21</sup>, Benjamin Hoag<sup>91,92</sup>, Randi  
 K. Johnson<sup>93,94</sup>, Angus G. Jones<sup>12,95</sup>, Robert W. Koivula<sup>96</sup>, Aaron Leong<sup>4,17,97</sup>,  
 Gloria K. W. Leung<sup>71</sup>, Ingrid M. Libman<sup>98</sup>, Kai Liu<sup>88</sup>, S. Alice Long<sup>99</sup>, William  
 L. Lowe Jr<sup>100</sup>, Robert W. Morton<sup>101,102,103</sup>, Ayesha A. Motala<sup>104</sup>, Suna Onengut-  
 Gumuscu<sup>105</sup>, James S. Pankow<sup>106</sup>, Maleesa Pathirana<sup>88,89</sup>, Sofia Pazmino<sup>107</sup>,  
 Dianna Perez<sup>19,20,21</sup>, John R. Petrie<sup>108</sup>, Camille E. Powe<sup>4,16,17,109</sup>, Alejandra  
 Quinteros<sup>88</sup>, Rashmi Jain<sup>110,111</sup>, Debashree Ray<sup>55,112</sup>, Mathias Ried-Larsen<sup>113,114</sup>,  
 Zeb Saeed<sup>115</sup>, Vanessa Santhakumar<sup>1</sup>, Sarah Kanbour<sup>49,116</sup>, Sudipa Sarkar<sup>49</sup>,  
 Gabriela S. F. Monaco<sup>19,20,21</sup>, Denise M. Scholtens<sup>117</sup>, Elizabeth Selvin<sup>47,55</sup>,  
 Wayne Huey-Herng Sheu<sup>118,119,120</sup>, Cate Speake<sup>121</sup>, Maggie A. Stanislawski<sup>93</sup>,  
 Nele Steenackers<sup>107</sup>, Andrea K. Steck<sup>122</sup>, Norbert Stefan<sup>52,56,123</sup>, Julie Støy<sup>124</sup>,  
 Rachael Taylor<sup>125</sup>, Sok Cin Tye<sup>126,127</sup>, Gebresilasea Gendisha Ukke<sup>61</sup>, Marzhan  
 Urazbayeva<sup>65,128</sup>, Bart Van der Schueren<sup>107,129</sup>, Camille Vatie<sup>130,131</sup>, John  
 M. Wentworth<sup>132,133,134</sup>, Wesley Hannah<sup>135,136</sup>, Sara L. White<sup>77,137</sup>, Gechang  
 Yu<sup>38,62</sup>, Yingchai Zhang<sup>38,62</sup>, Shao J. Zhou<sup>89,138</sup>, Jacques Beltrand<sup>139,140</sup>, Michel  
 Polak<sup>139,140</sup>, Ingvild Aukrust<sup>59,141</sup>, Elisa de Franco<sup>12</sup>, Sarah E. Flanagan<sup>12</sup>, Kristin  
 A. Maloney<sup>142</sup>, Andrew McGovern<sup>12</sup>, Janne Molnes<sup>59,141</sup>, Mariam Nakabuye<sup>3</sup>,  
 Pål Rasmus Njølstad<sup>59,60</sup>, Hugo Pomares-Millan<sup>6,143</sup>, Michele Provenzano<sup>144</sup>,  
 Cécile Saint-Martin<sup>145</sup>, Cuilin Zhang<sup>146,147</sup>, Yeyi Zhu<sup>148,149</sup>, Sungyoung Auh<sup>150</sup>,  
 Russell de Souza<sup>102,151</sup>, Andrea J. Fawcett<sup>152,153</sup>, Chandra Gruber<sup>154</sup>, Eskedar  
 Getie Mekonnen<sup>155,156</sup>, Emily Mixer<sup>157</sup>, Diana Sherifali<sup>102,158</sup>, Robert H. Eckel<sup>159</sup>,  
 John J. Nolan<sup>160,161</sup>, Louis H. Philipson<sup>157</sup>, Rebecca J. Brown<sup>150,196</sup>, Liana K.  
 Billings<sup>162,163,196</sup>, Kristen Boyle<sup>78,196</sup>, Tina Costacou<sup>42</sup>, John M. Dennis<sup>12,196</sup>, Jose  
 C. Florez<sup>4,5,16,17,196</sup>, Anna L. Gloyn<sup>28,29,164,196</sup>, Maria F. Gomez<sup>6,165,196</sup>, Peter  
 A. Gottlieb<sup>122,196</sup>, Siri Atma W. Greeley<sup>166,196</sup>, Kurt Griffin<sup>111,167,196</sup>, Andrew T.  
 Hattersley<sup>12,95,196</sup>, Irl B. Hirsch<sup>168,196</sup>, Marie-France Hivert<sup>4,169,170,196</sup>, Korey K.



Hood<sup>67,196</sup>, Jami L. Josefson<sup>152,196</sup>, Soo Heon Kwak<sup>171,196</sup>, Lori M. Laffel<sup>172,196</sup>, Siew S. Lim<sup>61,196</sup>, Ruth J. F. Loos<sup>3,173,196</sup>, Ronald C. W. Ma<sup>38,62,63,196</sup>, Chantal Mathieu<sup>23,196</sup>, Nestoras Mathioudakis<sup>49,196</sup>, James B. Meigs<sup>17,97,174,196</sup>, Shivani Misra<sup>175,176,196</sup>, Viswanathan Mohan<sup>177,196</sup>, Rinki Murphy<sup>178,179,180,196</sup>, Richard Oram<sup>12,95,196</sup>, Katharine R. Owen<sup>96,181,196</sup>, Susan E. Ozanne<sup>182,196</sup>, Ewan R. Pearson<sup>27,196</sup>, Wei Perng<sup>78,196</sup>, Toni I. Pollin<sup>142,183,196</sup>, Rodica Pop-Busui<sup>184</sup>, Richard E. Pratley<sup>185,196</sup>, Leanne M. Redman<sup>186,196</sup>, Maria J. Redondo<sup>64,65,196</sup>, Rebecca M. Reynolds<sup>41,196</sup>, Robert K. Semple<sup>41,187,196</sup>, Jennifer L. Sherr<sup>188,196</sup>, Emily K. Sims<sup>19,20,21,196</sup>, Arianne Sweeting<sup>189,190,196</sup>, Tiinamaija Tuomi<sup>32,33,34,196</sup>, Miriam S. Udler<sup>4,5,16,17,196</sup>, Kimberly K. Vesco<sup>191,196</sup>, Tina Vilsbøll<sup>192,193,196</sup>, Robert Wagner<sup>51,52,194,196</sup>, Stephen S. Rich<sup>105,196</sup>, Paul W. Franks<sup>2,6,96,103,196,∞</sup>

## Affiliations

<sup>1</sup>Division of Preventative Medicine, Department of Medicine, Brigham and Women's Hospital and Harvard Medical School, Boston, MA, USA.

<sup>2</sup>Department of Nutrition, Harvard T.H. Chan School of Public Health, Boston, MA, USA.

<sup>3</sup>Novo Nordisk Foundation Center for Basic Metabolic Research, Faculty of Health and Medical Sciences, University of Copenhagen, Copenhagen, Denmark.

<sup>4</sup>Diabetes Unit, Endocrine Division, Massachusetts General Hospital, Boston, MA, USA.

<sup>5</sup>Center for Genomic Medicine, Massachusetts General Hospital, Boston, MA, USA.

<sup>6</sup>Department of Clinical Sciences, Lund University Diabetes Centre, Lund University, Malmö, Sweden.

<sup>7</sup>Department of Obstetrics and Gynaecology, The Rosie Hospital, Cambridge, UK.

<sup>8</sup>NIHR Cambridge Biomedical Research Centre, University of Cambridge, Cambridge, UK.

<sup>9</sup>Departments of Medicine and Community Health Sciences, Cumming School of Medicine, University of Calgary, Calgary, Alberta, Canada.

<sup>10</sup>Department of Molecular Genetics, Madras Diabetes Research Foundation, Chennai, India.

<sup>11</sup>Division of Pediatric Endocrinology, Department of Pediatrics, Saint Louis University School of Medicine, SSM Health Cardinal Glennon Children's Hospital, St. Louis, MO, USA.

<sup>12</sup>Department of Clinical and Biomedical Sciences, University of Exeter Medical School, Exeter, UK.

<sup>13</sup>CIBER-BBN, ISCIII, Madrid, Spain.

<sup>14</sup>Institut d'Investigació Biomèdica Sant Pau (IIB SANT PAU), Barcelona, Spain.

<sup>15</sup>Departament de Medicina, Universitat Autònoma de Barcelona, Bellaterra, Spain.

- <sup>16</sup>Programs in Metabolism and Medical & Population Genetics, Broad Institute, Cambridge, MA, USA.
- <sup>17</sup>Department of Medicine, Harvard Medical School, Boston, MA, USA.
- <sup>18</sup>Division of Endocrinology, Diabetes and Metabolism, Johns Hopkins University School of Medicine, Baltimore, MD, USA.
- <sup>19</sup>Department of Pediatrics, Indiana University School of Medicine, Indianapolis, IN, USA.
- <sup>20</sup>Herman B Wells Center for Pediatric Research, University School of Medicine, Indianapolis, IN, USA.
- <sup>21</sup>Center for Diabetes and Metabolic Diseases, Indiana University School of Medicine, Indianapolis, IN, USA.
- <sup>22</sup>Department of Biostatistics and Epidemiology, Rutgers School of Public Health, Piscataway, NJ, USA.
- <sup>23</sup>University Hospital Leuven, Leuven, Belgium.
- <sup>24</sup>Department of Nutrition, Université de Montréal, Montreal, Quebec, Quebec, Canada.
- <sup>25</sup>Research Center, Sainte-Justine University Hospital Center, Montreal, Quebec, Quebec, Canada.
- <sup>26</sup>Department of Pediatrics, Erasmus Medical Center, Rotterdam, the Netherlands.
- <sup>27</sup>Division of Population Health & Genomics, School of Medicine, University of Dundee, Dundee, UK.
- <sup>28</sup>Department of Pediatrics, Stanford School of Medicine, Stanford University, Stanford, CA, USA.
- <sup>29</sup>Stanford Diabetes Research Center, Stanford School of Medicine, Stanford University, Stanford, CA, USA.
- <sup>30</sup>University of Florida, Gainesville, FL, USA.
- <sup>31</sup>Department of Nutrition, University of North Carolina at Chapel Hill, Chapel Hill, NC, USA.
- <sup>32</sup>Helsinki University Hospital, Abdominal Centre/Endocrinology, Helsinki, Finland.
- <sup>33</sup>Folkhalsan Research Center, Helsinki, Finland.
- <sup>34</sup>Institute for Molecular Medicine Finland FIMM, University of Helsinki, Helsinki, Finland.
- <sup>35</sup>Department of Pediatrics, Division of Endocrinology, Boston Children's Hospital, Boston, MA, USA.
- <sup>36</sup>Department of Medicine, Faculty of Medicine, University of Malaya, Kuala Lumpur, Malaysia.

- <sup>37</sup>Asia Diabetes Foundation, Hong Kong SAR, China.
- <sup>38</sup>Department of Medicine & Therapeutics, Chinese University of Hong Kong, Hong Kong SAR, China.
- <sup>39</sup>Departments of Pediatrics and Clinical Genetics, Kuopio University Hospital, Kuopio, Finland.
- <sup>40</sup>Department of Medicine, University of Eastern Finland, Kuopio, Finland.
- <sup>41</sup>Centre for Cardiovascular Science, Queen's Medical Research Institute, University of Edinburgh, Edinburgh, UK.
- <sup>42</sup>Department of Epidemiology, University of Pittsburgh, Pittsburgh, PA, USA.
- <sup>43</sup>Metabolic Disease Unit, University Hospital of Padova, Padova, Italy.
- <sup>44</sup>Department of Medicine, University of Padova, Padova, Italy.
- <sup>45</sup>Department of Orthopedics, Zuyderland Medical Center, Sittard-Geleen, The Netherlands.
- <sup>46</sup>Departments of Pediatrics and Medicine, University of Chicago, Chicago, IL, USA.
- <sup>47</sup>Welch Center for Prevention, Epidemiology, and Clinical Research, Johns Hopkins Bloomberg School of Public Health, Baltimore, MD, USA.
- <sup>48</sup>Ciccarone Center for the Prevention of Cardiovascular Disease, Johns Hopkins School of Medicine, Baltimore, MD, USA.
- <sup>49</sup>Department of Medicine, Johns Hopkins University, Baltimore, MD, USA.
- <sup>50</sup>Department of Health Policy and Management, Johns Hopkins University Bloomberg School of Public Health, Baltimore, MD, USA.
- <sup>51</sup>Institute for Clinical Diabetology, German Diabetes Center, Leibniz Center for Diabetes Research at Heinrich Heine University Düsseldorf, Düsseldorf, Germany.
- <sup>52</sup>German Center for Diabetes Research (DZD), Neuherberg, Germany.
- <sup>53</sup>Section of Academic Primary Care, US Department of Veterans Affairs Eastern Colorado Health Care System, Aurora, CO, USA.
- <sup>54</sup>Department of Medicine, University of Colorado School of Medicine, Aurora, CO, USA.
- <sup>55</sup>Department of Epidemiology, Johns Hopkins Bloomberg School of Public Health, Baltimore, MD, USA.
- <sup>56</sup>Institute of Diabetes Research and Metabolic Diseases (IDM), Helmholtz Center Munich, Neuherberg, Germany.
- <sup>57</sup>Institute of Experimental Endocrinology, Biomedical Research Center, Slovak Academy of Sciences, Bratislava, Slovakia.
- <sup>58</sup>Clinical and Translational Epidemiology Unit, Massachusetts General Hospital, Boston, MA, USA.

- <sup>59</sup>Mohn Center for Diabetes Precision Medicine, Department of Clinical Science, University of Bergen, Bergen, Norway.
- <sup>60</sup>Children and Youth Clinic, Haukeland University Hospital, Bergen, Norway.
- <sup>61</sup>Eastern Health Clinical School, Monash University, Melbourne, Victoria, Australia.
- <sup>62</sup>Laboratory for Molecular Epidemiology in Diabetes, Li Ka Shing Institute of Health Sciences, The Chinese University of Hong Kong, Hong Kong SAR, China.
- <sup>63</sup>Hong Kong Institute of Diabetes and Obesity, The Chinese University of Hong Kong, Hong Kong SAR, China.
- <sup>64</sup>Department of Pediatrics, Baylor College of Medicine, Houston, TX, USA.
- <sup>65</sup>Division of Pediatric Diabetes and Endocrinology, Texas Children's Hospital, Houston, TX, USA.
- <sup>66</sup>Children's Nutrition Research Center, USDA/ARS, Houston, TX, USA.
- <sup>67</sup>Stanford University School of Medicine, Stanford, CA, USA.
- <sup>68</sup>Internal Medicine, University of Manitoba, Winnipeg, Manitoba, Canada.
- <sup>69</sup>Department of Diabetology, APHP, Paris, France.
- <sup>70</sup>Sorbonne Université, INSERM, NutriOmic team, Paris, France.
- <sup>71</sup>Department of Nutrition, Dietetics and Food, Monash University, Melbourne, Victoria, Australia.
- <sup>72</sup>Monash Centre for Health Research and Implementation, Monash University, Clayton, Victoria, Australia.
- <sup>73</sup>Health Management Center, The Second Affiliated Hospital of Chongqing Medical University, Chongqing Medical University, Chongqing, China.
- <sup>74</sup>MRC/Wits Developmental Pathways for Health Research Unit, Department of Paediatrics, Faculty of Health Sciences, University of the Witwatersrand, Johannesburg, South Africa.
- <sup>75</sup>Channing Division of Network Medicine, Brigham and Women's Hospital, Boston, MA, USA.
- <sup>76</sup>Sydney Brenner Institute for Molecular Bioscience, Faculty of Health Sciences, University of the Witwatersrand, Johannesburg, South Africa.
- <sup>77</sup>Department of Women and Children's Health, King's College London, London, UK.
- <sup>78</sup>Lifecourse Epidemiology of Adiposity and Diabetes (LEAD) Center, University of Colorado Anschutz Medical Campus, Aurora, CO, USA.
- <sup>79</sup>Section of Adult and Pediatric Endocrinology, Diabetes and Metabolism, Kovler Diabetes Center, University of Chicago, Chicago, IL, USA.

- <sup>80</sup>Department of Pediatrics, Riley Hospital for Children, Indiana University School of Medicine, Indianapolis, IN, USA.
- <sup>81</sup>Richard L. Roudebush VAMC, Indianapolis, IN, USA.
- <sup>82</sup>Biomedical Research Institute Girona, IdIBGi, Girona, Spain.
- <sup>83</sup>Diabetes, Endocrinology and Nutrition Unit Girona, University Hospital Dr Josep Trueta, Girona, Spain.
- <sup>84</sup>Institute of Health System Science, Feinstein Institutes for Medical Research, Northwell Health, Manhasset, NY, USA.
- <sup>85</sup>University of California at San Francisco, Department of Pediatrics, Diabetes Center, San Francisco, CA, USA.
- <sup>86</sup>Division of Endocrinology, Diabetes and Metabolism, Cedars-Sinai Medical Center, Los Angeles, CA, USA.
- <sup>87</sup>Department of Medicine, Cedars-Sinai Medical Center, Los Angeles, CA, USA.
- <sup>88</sup>Adelaide Medical School, Faculty of Health and Medical Sciences, The University of Adelaide, Adelaide, South Australia, Australia.
- <sup>89</sup>Robinson Research Institute, The University of Adelaide, Adelaide, South Australia, Australia.
- <sup>90</sup>Department of Public Health and Novo Nordisk Foundation Center for Basic Metabolic Research, Faculty of Health and Medical Sciences, University of Copenhagen, Copenhagen, Denmark.
- <sup>91</sup>Division of Endocrinology and Diabetes, Department of Pediatrics, Sanford Children's Hospital, Sioux Falls, SD, USA.
- <sup>92</sup>University of South Dakota School of Medicine, E Clark St, Vermillion, SD, USA.
- <sup>93</sup>Department of Biomedical Informatics, University of Colorado Anschutz Medical Campus, Aurora, CO, USA.
- <sup>94</sup>Department of Epidemiology, Colorado School of Public Health, Aurora, CO, USA.
- <sup>95</sup>Royal Devon University Healthcare NHS Foundation Trust, Exeter, UK.
- <sup>96</sup>Oxford Centre for Diabetes, Endocrinology and Metabolism, University of Oxford, Oxford, UK.
- <sup>97</sup>Division of General Internal Medicine, Massachusetts General Hospital, Boston, MA, USA.
- <sup>98</sup>UPMC Children's Hospital of Pittsburgh, Pittsburgh, PA, USA.
- <sup>99</sup>Center for Translational Immunology, Benaroya Research Institute, Seattle, WA, USA.
- <sup>100</sup>Department of Medicine, Northwestern University Feinberg School of Medicine, Chicago, IL, USA.

- <sup>101</sup>Department of Pathology & Molecular Medicine, McMaster University, Hamilton, Ontario, Canada.
- <sup>102</sup>Population Health Research Institute, Hamilton, Ontario, Canada.
- <sup>103</sup>Department of Translational Medicine, Medical Science, Novo Nordisk Foundation, Hellerup, Denmark.
- <sup>104</sup>Department of Diabetes and Endocrinology, Nelson R. Mandela School of Medicine, University of KwaZulu-Natal, Durban, South Africa.
- <sup>105</sup>Center for Public Health Genomics, Department of Public Health Sciences, University of Virginia, Charlottesville, VA, USA.
- <sup>106</sup>Division of Epidemiology and Community Health, School of Public Health, University of Minnesota, Minneapolis, MN, USA.
- <sup>107</sup>Department of Chronic Diseases and Metabolism, Clinical and Experimental Endocrinology, KU Leuven, Leuven, Belgium.
- <sup>108</sup>School of Health and Wellbeing, College of Medical, Veterinary and Life Sciences, University of Glasgow, Glasgow, UK.
- <sup>109</sup>Department of Obstetrics, Gynecology, and Reproductive Biology, Massachusetts General Hospital and Harvard Medical School, Boston, MA, USA.
- <sup>110</sup>Sanford Children's Specialty Clinic, Sioux Falls, SD, USA.
- <sup>111</sup>Department of Pediatrics, Sanford School of Medicine, University of South Dakota, Sioux Falls, SD, USA.
- <sup>112</sup>Department of Biostatistics, Johns Hopkins Bloomberg School of Public Health, Baltimore, MD, USA.
- <sup>113</sup>Centre for Physical Activity Research, Rigshospitalet, Copenhagen, Denmark.
- <sup>114</sup>Institute for Sports and Clinical Biomechanics, University of Southern Denmark, Odense, Denmark.
- <sup>115</sup>Department of Medicine, Division of Endocrinology, Diabetes and Metabolism, Indiana University School of Medicine, Indianapolis, IN, USA.
- <sup>116</sup>AMAN Hospital, Doha, Qatar.
- <sup>117</sup>Department of Preventive Medicine, Division of Biostatistics, Northwestern University Feinberg School of Medicine, Chicago, IL, USA.
- <sup>118</sup>Institute of Molecular and Genomic Medicine, National Health Research Institutes, Zhunan, Taiwan.
- <sup>119</sup>Division of Endocrinology and Metabolism, Taichung Veterans General Hospital, Taichung, Taiwan.
- <sup>120</sup>Division of Endocrinology and Metabolism, Taipei Veterans General Hospital, Taipei, Taiwan.

- <sup>121</sup>Center for Interventional Immunology, Benaroya Research Institute, Seattle, WA, USA.
- <sup>122</sup>Barbara Davis Center for Diabetes, University of Colorado Anschutz Medical Campus, Aurora, CO, USA.
- <sup>123</sup>University Hospital of Tübingen, Tübingen, Germany.
- <sup>124</sup>Steno Diabetes Center Aarhus, Aarhus University Hospital, Aarhus, Denmark.
- <sup>125</sup>University of Newcastle, Newcastle upon Tyne, UK.
- <sup>126</sup>Sections on Genetics and Epidemiology, Joslin Diabetes Center, Harvard Medical School, Boston, MA, USA.
- <sup>127</sup>Department of Clinical Pharmacy and Pharmacology, University Medical Center Groningen, Groningen, the Netherlands.
- <sup>128</sup>Gastroenterology, Baylor College of Medicine, Houston, TX, USA.
- <sup>129</sup>Department of Endocrinology, University Hospitals Leuven, Leuven, Belgium.
- <sup>130</sup>Sorbonne University, Inserm U938, Saint-Antoine Research Centre, Institute of Cardiometabolism and Nutrition, Paris, France.
- <sup>131</sup>Department of Endocrinology, Diabetology and Reproductive Endocrinology, Assistance Publique-Hôpitaux de Paris, Saint-Antoine University Hospital, National Reference Center for Rare Diseases of Insulin Secretion and Insulin Sensitivity (PRISIS), Paris, France.
- <sup>132</sup>Royal Melbourne Hospital Department of Diabetes and Endocrinology, Parkville, Victoria, Australia.
- <sup>133</sup>Walter and Eliza Hall Institute, Parkville, Victoria, Australia.
- <sup>134</sup>University of Melbourne Department of Medicine, Parkville, Victoria, Australia.
- <sup>135</sup>Deakin University, Melbourne, Victoria, Australia.
- <sup>136</sup>Department of Epidemiology, Madras Diabetes Research Foundation, Chennai, India.
- <sup>137</sup>Department of Diabetes and Endocrinology, Guy's and St Thomas' Hospitals NHS Foundation Trust, London, UK.
- <sup>138</sup>School of Agriculture, Food and Wine, University of Adelaide, Adelaide, South Australia, Australia.
- <sup>139</sup>Institut Cochin, Inserm U 10116, Paris, France.
- <sup>140</sup>Pediatric Endocrinology and Diabetes, Hopital Necker Enfants Malades, APHP Centre, Université de Paris, Paris, France.
- <sup>141</sup>Department of Medical Genetics, Haukeland University Hospital, Bergen, Norway.
- <sup>142</sup>Department of Medicine, University of Maryland School of Medicine, Baltimore, MD, USA.

- <sup>143</sup>Department of Epidemiology, Geisel School of Medicine at Dartmouth, Hanover, NH, USA.
- <sup>144</sup>Nephrology, Dialysis and Renal Transplant Unit, IRCCS—Azienda Ospedaliero-Universitaria di Bologna, Alma Mater Studiorum University of Bologna, Bologna, Italy.
- <sup>145</sup>Department of Medical Genetics, AP-HP Pitié-Salpêtrière Hospital, Sorbonne University, Paris, France.
- <sup>146</sup>Global Center for Asian Women's Health, Yong Loo Lin School of Medicine, National University of Singapore, Singapore, Singapore.
- <sup>147</sup>Department of Obstetrics and Gynecology, Yong Loo Lin School of Medicine, National University of Singapore, Singapore, Singapore.
- <sup>148</sup>Kaiser Permanente Northern California Division of Research, Oakland, CA, USA.
- <sup>149</sup>Department of Epidemiology and Biostatistics, University of California, San Francisco, CA, USA.
- <sup>150</sup>National Institute of Diabetes and Digestive and Kidney Diseases, National Institutes of Health, Bethesda, MD, USA.
- <sup>151</sup>Department of Health Research Methods, Evidence, and Impact, Faculty of Health Sciences, McMaster University, Hamilton, Ontario, Canada.
- <sup>152</sup>Ann & Robert H. Lurie Children's Hospital of Chicago, Department of Pediatrics, Northwestern University Feinberg School of Medicine, Chicago, IL, USA.
- <sup>153</sup>Department of Clinical and Organizational Development, Chicago, IL, USA.
- <sup>154</sup>American Diabetes Association, Arlington, VA, USA.
- <sup>155</sup>College of Medicine and Health Sciences, University of Gondar, Gondar, Ethiopia.
- <sup>156</sup>Global Health Institute, Faculty of Medicine and Health Sciences, University of Antwerp, Antwerp, Belgium.
- <sup>157</sup>Department of Medicine and Kovler Diabetes Center, University of Chicago, Chicago, IL, USA.
- <sup>158</sup>School of Nursing, Faculty of Health Sciences, McMaster University, Hamilton, Ontario, Canada.
- <sup>159</sup>Division of Endocrinology, Metabolism, Diabetes, University of Colorado, Aurora, CO, USA.
- <sup>160</sup>Department of Clinical Medicine, School of Medicine, Trinity College Dublin, Dublin, Ireland.
- <sup>161</sup>Department of Endocrinology, Wexford General Hospital, Wexford, Ireland.
- <sup>162</sup>Division of Endocrinology, NorthShore University HealthSystem, Skokie, IL, USA.



- <sup>163</sup>Department of Medicine, Pritzker School of Medicine, University of Chicago, Chicago, IL, USA.
- <sup>164</sup>Department of Genetics, Stanford School of Medicine, Stanford University, Stanford, CA, USA.
- <sup>165</sup>Faculty of Health, Aarhus University, Aarhus, Denmark.
- <sup>166</sup>Departments of Pediatrics and Medicine and Kovler Diabetes Center, University of Chicago, Chicago, IL, USA.
- <sup>167</sup>Sanford Research, Sioux Falls, SD, USA.
- <sup>168</sup>University of Washington School of Medicine, Seattle, WA, USA.
- <sup>169</sup>Department of Population Medicine, Harvard Medical School, Harvard Pilgrim Health Care Institute, Boston, MA, USA.
- <sup>170</sup>Department of Medicine, Universite de Sherbrooke, Sherbrooke, Quebec, Canada.
- <sup>171</sup>Department of Internal Medicine, Seoul National University College of Medicine, Seoul National University Hospital, Seoul, Republic of Korea.
- <sup>172</sup>Joslin Diabetes Center, Harvard Medical School, Boston, MA, USA.
- <sup>173</sup>Charles Bronfman Institute for Personalized Medicine, Icahn School of Medicine at Mount Sinai, New York, NY, USA.
- <sup>174</sup>Broad Institute, Cambridge, MA, USA.
- <sup>175</sup>Division of Metabolism, Digestion and Reproduction, Imperial College London, London, UK.
- <sup>176</sup>Department of Diabetes & Endocrinology, Imperial College Healthcare NHS Trust, London, UK.
- <sup>177</sup>Department of Diabetology, Madras Diabetes Research Foundation & Dr. Mohan's Diabetes Specialities Centre, Chennai, India.
- <sup>178</sup>Department of Medicine, Faculty of Medicine and Health Sciences, University of Auckland, Auckland, New Zealand.
- <sup>179</sup>Auckland Diabetes Centre, Te Whatu Ora Health New Zealand, Auckland, New Zealand.
- <sup>180</sup>Medical Bariatric Service, Te Whatu Ora Counties, Health New Zealand, Auckland, New Zealand.
- <sup>181</sup>Oxford NIHR Biomedical Research Centre, University of Oxford, Oxford, UK.
- <sup>182</sup>University of Cambridge, Metabolic Research Laboratories and MRC Metabolic Diseases Unit, Wellcome-MRC Institute of Metabolic Science, Cambridge, UK.
- <sup>183</sup>Department of Epidemiology & Public Health, University of Maryland School of Medicine, Baltimore, MD, USA.

<sup>184</sup>Department of Internal Medicine, Division of Metabolism, Endocrinology and Diabetes, University of Michigan, Ann Arbor, MI, USA.

<sup>185</sup>AdventHealth Translational Research Institute, Orlando, FL, USA.

<sup>186</sup>Pennington Biomedical Research Center, Baton Rouge, LA, USA.

<sup>187</sup>MRC Human Genetics Unit, Institute of Genetics and Cancer, University of Edinburgh, Edinburgh, UK.

<sup>188</sup>Yale School of Medicine, New Haven, CT, USA.

<sup>189</sup>Faculty of Medicine and Health, University of Sydney, Sydney, New South Wales, Australia.

<sup>190</sup>Department of Endocrinology, Royal Prince Alfred Hospital, Sydney, New South Wales, Australia.

<sup>191</sup>Kaiser Permanente Northwest, Kaiser Permanente Center for Health Research, Portland, OR, USA.

<sup>192</sup>Clinical Research, Steno Diabetes Center Copenhagen, Herlev, Denmark.

<sup>193</sup>Department of Clinical Medicine, Faculty of Health and Medical Sciences, University of Copenhagen, Copenhagen, Denmark.

<sup>194</sup>Department of Endocrinology and Diabetology, University Hospital Düsseldorf, Heinrich Heine University Düsseldorf, Düsseldorf, Germany.

<sup>195</sup>These authors contributed equally: Deirdre K. Tobias, Jordi Merino, Abrar Ahmad, Catherine Aiken, Jamie L. Benham, Dhanasekaran Bodhini, Kevin Colclough, Sara J. Cromer, Daisy Duan, Jamie L. Felton, Ellen C. Francis, Pieter Gillard, Véronique Gingras, Romy Gaillard, Eram Haider, Alice Hughes, Jennifer M. Ikle, Laura M. Jacobsen, Anna R. Kahkoska, Jarno L. T. Kettunen, Raymond J. Kreienkamp, Lee-Ling Lim, Jonna M. E. Männistö, Robert Massey, Niamh-Maire McLennan, Mario Luca Morieri, Jasper Most, Rochelle N. Naylor, Bige Ozkan, Kashyap Amratlal Patel, Scott J. Pilla, Katsiaryna Prystupa, Sridaran Raghaven, Mary R. Rooney, Martin Schön, Zhila Semnani-Azad, Magdalena Sevilla-Gonzalez, Pernille Svalastoga, Wubet Worku Takele, Claudia Ha-ting Tam, Anne C. Baun Thuesen, Mustafa Tosur, Amelia S. Wallace, Caroline C. Wang, Jessie J. Wong, Jennifer M. Yamamoto, Katherine Young.

<sup>196</sup>These authors jointly supervised this work: Rebecca J. Brown, Liana K. Billings, Kristen Boyle, John M. Dennis, Jose C. Florez, Anna L. Gloyn, Maria F. Gomez, Peter A. Gottlieb, Siri Atma W. Greeley, Kurt Griffin, Andrew T. Hattersley, Irl B. Hirsch, Marie-France Hivert, Korey K. Hood, Jami L. Josefson, Soo Heon Kwak, Lori M. Laffel, Siew S. Lim, Ruth J. F. Loos, Ronald C. W. Ma, Chantal Mathieu, Nestoras Mathioudakis, James B. Meigs, Shivani Misra, Viswanathan Mohan, Rinki Murphy, Richard Oram, Katharine R. Owen, Susan E. Ozanne, Ewan R. Pearson, Wei Perng, Toni I. Pollin, Richard E. Pratley, Leanne M. Redman, Maria J. Redondo, Rebecca M. Reynolds, Robert K. Semple, Jennifer L. Sherr, Emily K. Sims, Arianne

Sweeting, Tiinamaija Tuomi, Miriam S. Udler, Kimberly K. Vesco, Tina Vilsbøll, Robert Wagner, Stephen S. Rich, Paul W. Franks.

## Acknowledgements

We thank P. Siming (Department of Clinical Sciences, Lund University, Malmö, Sweden) for administrative support and M. Björklund and K. Aronsson (Faculty of Medicine Library, Lund University, Sweden) for Covidence support. We thank L. Schwingshackl (University of Freiburg, Germany) for advice on systematic review methods and ADA for administrative support. Funding: The ADA/EASD Precision Diabetes Medicine Initiative, within which this work was conducted, has received the following support: The Covidence license was funded by Lund University, Sweden (PI: P.W. Franks) for which technical support was provided by M. Björklund and K. Aronsson (Faculty of Medicine Library, Lund University, Sweden). Administrative support was provided by Lund University (Malmö, Sweden), University of Chicago (IL, USA) and the American Diabetes Association (Washington DC, USA). The Novo Nordisk Foundation (Hellerup, Denmark) provided grant support for in-person consensus meetings (PI: L. Phillipson, University of Chicago, IL, USA). The opinions expressed herein do not necessarily reflect those of the American Diabetes Association, the European Association for the Study of Diabetes, Novo Nordisk Foundation, National Institutes of Health (NIH), or any other society, institute, or foundation. J. Merino was partially supported by funding from the American Diabetes Association (award no. 7-21-JDFM-005) and the NIH (grant nos. P30 DK40561 and UG1 HD107691); S.J.C. is supported by a Junior Faculty Development Award from the American Diabetes Association (award no. 7-21-JDFM-005); D. Duan is supported by NIH grant no. K23DK133690; E.C.F. received grant support from NIH/NICHD grant no. K99108272-02 and NIH/NHLBI grant no. R25HL146166-05; J.M.I. was supported by NIH (grant no. K08 DK133676-01); A.R.K. is supported by the National Center for Advancing Translational Sciences, NIH, through grant no. KL2TR002490. The content is solely the responsibility of the authors and does not necessarily represent the official views of the NIH. A.R.K. also reports receiving research grants from the Diabetes Research Connection and the American Diabetes Association, and a research prize from the National Academy of Medicine, outside the submitted work; R.J.K. is supported by NIGMS grant no. T32GM774844 and Pediatric Endocrine Society Rising Star Award; N.-M.M. is supported by grants from the NIDDK (grant nos. R01DK125780 and R01DK134955); M.L.M. is supported by the Italian Ministry of Health grant no. GR-2019-12369702; R.N.N. was supported by ADA grant nos. 7-22-ICTSPM-17, R01DK104942 and U54DK118612; B.O. is supported by American Heart Association (grant no. 20SFRN35120152); K.A.P. is funded by the Wellcome Trust (grant no. 219606/Z/19/Z) and the National Institute for Health Research (NIHR) Exeter Biomedical Research Centre, Exeter, UK; S.J.P. was supported by the National Institute of Diabetes and Digestive and Kidney Diseases (grant no. K23DK128572); S.R. is funded by US Department of Veterans Affairs Award no. IK2-CX001907 and a Webb-Waring Biomedical Research Award from the Boettcher Foundation; M.S.-G. is supported by the American Diabetes Association (grant no. 9-22-PDFPM-04) and NIH (grant no. 5UM1DK078616-14); W.W.T. has received funding from the Monash Graduate and International Tuition Scholarship and the Australian Government Research Training Program Scholarship; M.T. is supported by grant no. K23-DK129821 from NIH/NIDDK; A.S.W. is supported by NIH/NHLBI grant no. T32HL007024; M.C. has received funding from the Monash Graduate and International Tuition Scholarship and the Australian Government Research Training Program Scholarship; T.C. is an international training fellow supported by the Wellcome Trust (grant no. 214205/Z/18/Z); S.C.C. is funded by Diabetes UK Sir George Alberti fellowship (grant no. 21/0006277); A.J.D. is supported by NIH/NIDDK grant no. T32DK007028; S.E.G. currently receives research funding from the NIH: NIDDK (TrialNet, grant no. 2U01DK106993-02) and NIAID (Immune Tolerance Network, grant no. FY20ITN372), and from Provention Bio; M.O.G. is supported by the Eris M. Field Chair in Diabetes Research and NIH grant no. P30-DK063491; J.A.G. is supported by a NHMRC Ideas Grant (APP: 2000905); H.M.I. was supported by NIH/NIDDK grant no. K23DK129799; Pilot and Feasibility Award, CDMD, NIH/NIDDK grant no. P30 DK097512; grant no. 2021258 from the Doris Duke Charitable Foundation through the COVID-19 Fund to Retain Clinical Scientists collaborative grant program and grant no. 62288 from the John Templeton Foundation; R.K.J. is funded by NIH grant no. R03-DK127472 and The Leona M. and Harry B. Helmsley Charitable Trust (grant no. 2103-05094); A.L. is supported by grant no. 2020096 from the Doris Duke Foundation and the American Diabetes Association grant no. 7-22-ICTSPM-23; D.R. is supported by NIH/NIDDK grant no. R21DK125888 and other grants from the NIH; E.S. is supported by NIH/NHLBI grant no. K24 HL152440 and other grants from the NIH; W.H.-H.S. obtained funding from NHRI, Taiwan (grant nos. MG-112-PP-18 and MG-112-PP-19); M.A.S. is supported by NIH grant no. K01/NHLBI HL157658; G.G.U. is funded by the Monash Graduate Scholarship and Monash International Tuition Scholarship; J.M.W. is funded by NHMRC Ideas Grant; S.L.W. is supported by a research grant no. MR/W003740/1 from the Medical Research Council; J.B. is funded by the Intramural Research Program of the National Institute of Diabetes and Digestive and Kidney Diseases; E.D.F. is a Diabetes UK RD Lawrence Fellow (19/005971); S.E.F. has a Wellcome Trust Senior Research Fellowship (grant no. 223187/Z/21/Z); K.A.M. was supported by NIH grant no. U54DK118612 and NIH/NICHD grant no. U24HD093486; J. Molnes is funded by the Norwegian Diabetes Association; P.R.N. was supported by grants from the European Research Council (grant no. 293574), the Trond Mohn Foundation (Mohn Center for Diabetes Precision Medicine, grant no. TMS2022TMT01), the Research Council of Norway (grant no. 240413) and the Novo Nordisk Foundation (grant no. 54741); T.C. was supported by grant nos. R01HL130153 and R01DK034818; J.M.D. is supported by Research England's Expanding Excellence in England (E3) fund; J.C.F. is supported by NIH grant no. K24 HL157960; A.L.G. is a Wellcome Trust Senior Fellow (200837/Z/16/Z) and is also supported by NIDDK (award

no. UM-IDK126185); M.F.G. is supported by the Swedish Heart-Lung Foundation (grant no. 20190470), Swedish Research Council (EXODIAB, grant nos. 2009-1039 and 2018-02837), Swedish Foundation for Strategic Research (LUDC-IRC, grant no. 15-0067) and EU H2020-JTI-IMI2-2015-05 (grant agreement no. 115974 - BEAt-DKD); M.-F.H. was supported by the American Diabetes Association Pathways Award no. 1-15-ACE-26; J.L.J. is funded by the NIH (grant no. 5R01DK118403); L.M.L. is supported by National Institute of Health grant no. P30DK036836; S.S.L. is funded by the Australian National Health and Medical Research Council (NHMRC) Fellowship; C.C., J. Merino, A.C.B.T., M.K.A., M.G.-F., T.H. and R.J.F.L. acknowledge that The Novo Nordisk Foundation Center for Basic Metabolic Research is supported by and unrestricted grant from the Novo Nordisk Foundation (grant no. NNF18CC0034900); R.C.W.M. acknowledges support from the Research Grants Council of the Hong Kong Special Administrative Region (grant no. CU R4012-18), the Croucher Foundation Senior Medical Research Fellowship and University Grants Committee Research Grants Matching Scheme and Research Committee Postdoctoral Fellowship Scheme of the Chinese University of Hong Kong; J.B.M. reports funding from NIH grant nos. U01 DK078616 and R01 HL151855; S.M. has a personal award from Wellcome Trust Career Development scheme (grant no. 223024/Z/21/Z) and is supported by the NIHR Imperial Biomedical Research Centre; K.R.O. is supported by the National Institute for Health Research (NIHR) Oxford Biomedical Research Centre (BRC). The views expressed are those of the author(s) and not necessarily those of the NHS, the NIHR, or the Department of Health; S.E.O. is funded by the British Heart Foundation (grant no. RG/17/12/33167) and the Medical Research Council (grant no. MC\_UU\_00014/4); T.I.P. was supported by NIH grant nos. U54DK118612, NIH/NICHD U24HD093486 and NIH/NHGRI U01HG007775; L.M.R. is funded by the National Institute of Health (grant no. 5R01DK124806); relevant funding for M.J.R. includes NIH grant no. R01 DK124395 and NIH grant no. 1 R01 DK121843-01; R.M.R. acknowledges the support of the British Heart Foundation (grant no. RE/18/5/34216); T.T. is supported by The Folkhalsan Research Foundation and The Academy of Finland/University of Helsinki (grant nos. 312072 and 336826); M.S.U. is supported by an NIH grant no. K23DK114551 and the Doris Duke Foundation Clinical Scientist Development Award; S.S.R. is supported by NIH/NIDDK grant no. R01DK122586 and other grants from the NIH; P.W.F. is supported by research grants from the European Commission (grant no. ERC-CoG\_NASCENT-681742) and the Swedish Research Council (grant nos. 2014-03529 and 2019-01348).

### Competing interests

The following authors report unrelated disclosures. J. Merino. is an Associate Editor of *Diabetologia*; S.J.C. reports a close family member employed by a Johnson & Johnson company; A.R.K. is supported by the National Center for Advancing Translational Sciences, NIH, through grant KL2TR002490. A.R.K. also reports receiving research grants from the Diabetes Research Connection and the American Diabetes Association, and a research prize from the National Academy of Medicine, outside the submitted work; J.L.T.K. declares lecture fees from Novo Nordisk, international conference costs covered by Medtronic, AstraZeneca and Novo Nordisk; L.-L.L. reports receiving research grants via her academic institution and serving on an advisory board for Boehringer Ingelheim, Novartis, Novo Nordisk, Viatrix Pharmaceutical and Zuellig Pharma. L.-L.L. has received speaking honoraria from Abbott, Amgen, AstraZeneca, Boehringer Ingelheim, Novo Nordisk, Roche, Sanofi, Servier, Viatrix Pharmaceutical and Zuellig Pharma for scientific talks over which she had full control of the content; R.M. has received consulting or speaker honoraria from Eli Lilly, Novo Nordisk and Boehringer Ingelheim; M.L.M. has received lecture, consultancy, or advisory board fees from Amarin, Amgen, Eli Lilly, Merck Sharp & Dohme, Mylan, Novo Nordisk, Novartis, Servier and SlaPharma; C.E.-M. reports serving on advisory boards for Provention Bio, Isla Technologies, MaiCell Technologies, Avotres, DiogenyX and Neurodon; receiving in-kind research support from Bristol Myers Squibb and Nimbus Pharmaceuticals; receiving investigator-initiated grants from Lilly Pharmaceuticals and Astellas Pharmaceuticals; and having patent (16/291,668) Extracellular Vesicle Ribonucleic Acid (RNA) Cargo as a Biomarker of Hyperglycaemia and Type 1 Diabetes and provisional patent (63/285,765) Biomarker for Type 1 Diabetes (PDIA1 as a biomarker of  $\beta$  cell stress); S.E.G. has been on advisory boards for Abata, Avotres, Genentech, GentiBio, Provention Bio, Sana Biotechnology, Sanofi and is a DSMB member for INNODIA (MELD, ATG), Diamyd (DIAGNODE-3, GAD) and JDRF (TADPOL, DFMO); M.O.G. has served on an advisory board for Nestle Health Science; A.L. reports a close family member employed by Merck & Co., Inc.; C.E.P. is an Associate Editor of *Diabetes Care*, receives payments from Wolters Kluwer for UpToDate chapters on diabetes in pregnancy and has received payments for consulting and speaking from Mediflix Inc; E.S. is a Deputy Editor of *Diabetes Care* and a member of the editorial board of *Diabetologia* and receives payments from Wolters Kluwer for chapters and laboratory monographs in UpToDate on measurements of glycemic control and screening tests for type 2 diabetes; W.H.H.S. has been an Advisor and/or Speaker for AstraZeneca, Bayer HealthCare, Boehringer Ingelheim Pharmaceuticals, Daiichi Sankyo, Eli Lilly and Company, Merck Sharp & Dohme, Mitsubishi Tanabe Pharma Corporation, Novartis Pharmaceuticals, Novo Nordisk, Pfizer, Sanofi-Aventis, Takeda Pharmaceutical Company; J.M.W. reports a research collaboration with ENABLE Biosciences; R.J.B. has received research support from Amryt, Third Rock Ventures, Ionis and Regeneron; L.K.B. has received consulting honoraria from Bayer, Novo Nordisk, Sanofi, Lilly and Xeris; J.C.F. has received speaking honoraria from AstraZeneca and Novo Nordisk for scientific talks over which he had full control of content; A.L.G.'s spouse holds stock options in Roche and is an employee of Genentech; M.F.G. has received financial and nonfinancial (in kind) support from Boehringer Ingelheim Pharma GmbH, JDRF International, Eli Lilly, AbbVie, Sanofi-Aventis, Astellas, Novo Nordisk A/S, Bayer AG, within EU grant H2020-JTI-IMI2-2015-05 (grant agreement number 115974 - BEAt-DKD); and also from Novo Nordisk, Pfizer, Follicum, Coegin Pharma, Abcentra, Probi, Johnson & Johnson, within a project funded

by the Swedish Foundation for Strategic Research on precision medicine in diabetes (LUDC-IRC no. 15-0067). M.F.G. has received personal consultancy fees from Lilly and Tribune Therapeutics AB. R.d.S. has served as an external resource person to the World Health Organization's Nutrition Guidelines Advisory Group on trans fats, saturated fats, and polyunsaturated fats. The WHO paid for his travel and accommodation to attend meetings from 2012 to 2017 to present and discuss this work. He has presented updates of this work to the WHO in 2022. He has also done contract research for the Canadian Institutes of Health Research's Institute of Nutrition, Metabolism, and Diabetes, Health Canada, and the World Health Organization for which he received remuneration. He has received speaker's fees from the University of Toronto, and McMaster Children's Hospital. He has served as an independent director of the Helderleigh Foundation (Canada). He serves as a member of the Nutrition Science Advisory Committee to Health Canada (Government of Canada), co-chair of the Method working group of the ADA/EASD Precision Medicine in Diabetes group and is a co-opted member of the Scientific Advisory Committee on Nutrition (SACN) Subgroup on the Framework for the Evaluation of Evidence (Public Health England). He has held grants from the Canadian Institutes of Health Research, Canadian Foundation for Dietetic Research, Population Health Research Institute, and Hamilton Health Sciences Corporation as a principal investigator, and is a co-investigator on several funded team grants from the Canadian Institutes of Health Research. P.A.G. consults or has consulted for Provention Bio and Viacyte. He is the cofounder of IM Therapeutics and serves as CMO on the Board as well as being a shareholder. P.A.G. has also received research support from Helmsley Foundation, Nova Pharmaceuticals, Imcyse, Provention Bio, Intrexon T1D Partners and Novartis. All payments have been made to the University of Colorado; R.C.W.M. has received research grants from AstraZeneca, Bayer, Novo Nordisk, Pfizer, Roche Diagnostics (HK) Ltd, Tricida Inc, and consultancy/speaker honorarium from AstraZeneca, Boehringer Ingelheim, Bayer and Merck. All proceeds have been donated to the Chinese University of Hong Kong to support diabetes research. R.C.W.M. is a cofounder of GemVCare, a technology start-up initiated with support from the Hong Kong Government Innovation and Technology Commission and its Technology Start-up Support Scheme for Universities (TSSSU); C.M. serves or has served on the advisory panel for Novo Nordisk, Sanofi, Merck Sharp and Dohme Ltd., Eli Lilly and Company, Novartis, AstraZeneca, Boehringer Ingelheim, Roche, Medtronic, ActoBio Therapeutics, Pfizer, Imcyse, Insulet, Zealand Pharma, Avotres, Mannkind, Sandoz and Vertex. Financial compensation for these activities has been received by KU Leuven; KU Leuven has received research support for C.M. from Medtronic, Imcyse, Novo Nordisk, Sanofi and ActoBio Therapeutics; C.M. serves or has served on the speakers' bureau for Novo Nordisk, Sanofi, Eli Lilly and Company, Boehringer Ingelheim, AstraZeneca and Novartis. Financial compensation for these activities has been received by KU Leuven. C.M. has been an Advisor and/or Speaker for Boehringer Ingelheim, Eli Lilly, Novo Nordisk and Sanofi-Aventis. C.M. is president of EASD (all external support of EASD is to be found on [www.easd.org](http://www.easd.org)); N.S. is Senior Associate Editor of Diabetes and has received speaking honoraria from AstraZeneca, Boehringer Ingelheim, Eli Lilly, Merck Sharp & Dohme, Novartis, Novo Nordisk, Pfizer and Sanofi for scientific talks over which he had full control of content; J.B.M. is an Academic Associate for Quest Inc. Diagnostics R&D; S.M. has investigator-initiated funding from DexCom, has received speaker fees from Sanofi for a scientific talk over which she had full control of content and serves on the Board of Trustees for the Diabetes Research & Wellness Foundation (UK); V.M. has acted as consultant and speaker, received research or educational grants from Novo Nordisk, MSD, Eli Lilly, Novartis, Boehringer Ingelheim, Lifescan J&J, Sanofi-Aventis, Roche Diagnostics, Abbott and from several Indian pharmaceutical companies including USV, Dr. Reddy's Laboratories and Sun Pharma. E.R.P. has received speaking honoraria from Lilly, Novo Nordisk and Illumina for scientific talks over which he had full control of content; J.L.S. serves or has served on advisory panels for Bigfoot Biomedical, Cecelia Health, Insulet Corporation, Medtronic Diabetes, StartUp Health Diabetes Moonshot and Vertex. She has served as a consultant to Abbott Diabetes, Bigfoot Biomedical, Insulet, Medtronic Diabetes and Zealand. Yale School of Medicine has received research support for JLS from Abbott Diabetes, JAEB Center for Health Research, JDRF, Insulet, Medtronic, NIH and Provention Bio; M.S.U. reports an unpaid collaborator with AstraZeneca; K.K.V. reports that her institution received funding from Pfizer Independent Grants for Learning and Change for an unrelated study. R.W. declares lecture fees from Novo Nordisk, Sanofi and Eli Lilly. He served on an advisory board for Akcea Therapeutics, Daiichi Sankyo, Sanofi, Eli Lilly and Novo Nordisk; P.W.F. has received consulting fees from Zoe Ltd and research grants from multiple pharmaceutical companies; R.W.M. and P.W.F. are employees of the Novo Nordisk Foundation, a private philanthropic enterprise foundation based in Denmark supporting research and education in the life sciences. All other authors report no disclosures.

## References

1. Green A et al. Type 1 diabetes in 2017: global estimates of incident and prevalent cases in children and adults. *Diabetologia* 64, 2741–2750 (2021). [PubMed: 34599655]
2. Chung WK et al. Precision medicine in diabetes: a consensus report from the American Diabetes Association (ADA) and the European Association for the Study of Diabetes (EASD). *Diabetes Care* 43, 1617–1635 (2020). [PubMed: 32561617]
3. Young KG et al. Treatment effect heterogeneity following type 2 diabetes treatment with GLP1-receptor agonists and SGLT2- inhibitors: a systematic review. *Commun. Med.* 10.1038/s43856-023-00359-w (2023).

4. Semple RK, Patel KA, Auh S, ADA/EASD PMDI & Brown RJ. Genotype-stratified treatment for monogenic insulin resistance: a systematic review. *Commun. Med.* 10.1038/s43856-023-00368-9 (2023).
5. Semnani-Azad Z et al. Predictors and risk factors of short-term and long-term outcomes among women with gestational diabetes mellitus (GDM) and their offspring: moving toward precision prognosis? Preprint at medRxiv 10.1101/2023.04.14.23288199 (2023).
6. Naylor RN et al. Systematic review of treatment of beta-cell monogenic diabetes. Preprint at medRxiv 10.1101/2023.05.12.23289807 (2023).
7. Murphy R et al. The use of precision diagnostics for monogenic diabetes: a systematic review and expert opinion. *Commun. Med.* 10.1038/s43856-023-00369-8 (2023).
8. Misra S et al. Precision subclassification of type 2 diabetes: a systematic review. *Commun. Med.* 10.1038/s43856-023-00360-3 (2023).
9. Lim S et al. Participant characteristics in the prevention of gestational diabetes as evidence for precision medicine: a systematic review and meta-analysis. *Commun. Med.* 10.1038/s43856-023-00366-x (2023).
10. Benham JL et al. Precision gestational diabetes treatment: a systematic review and meta-analyses. *Commun. Med.* 10.1038/s43856-023-00371-0 (2023).
11. Jacobsen LM et al. Utility and precision evidence of technology in the treatment of type 1 diabetes: a systematic review. *Commun. Med.* 10.1038/s43856-023-00358-x (2023).
12. Felton JL et al. Precision diagnostics: using islet autoantibodies to characterize heterogeneity in type 1 diabetes. Preprint at medRxiv 10.1101/2023.04.18.23288756 (2023).
13. Felton JL et al. Disease-modifying therapies and features linked to treatment response in type 1 diabetes prevention: a systematic review. *Commun. Med.* 10.1038/s43856-023-00357-y (2023).
14. Francis EC et al. Refining the diagnosis of gestational diabetes mellitus: a systematic review to inform efforts in precision medicine. Preprint at medRxiv 10.1101/2023.04.19.23288627 (2023).
15. Bodhini D et al. Impact of individual and environmental factors on dietary or lifestyle interventions to prevent type 2 diabetes development: a systematic review. *Commun. Med.* 10.1038/s43856-023-00363-0 (2023).
16. Ahmad A et al. Precision prognostics for cardiovascular disease in type 2 diabetes: a systematic review and meta-analysis. Preprint at medRxiv 10.1101/2023.04.26.23289177 (2023).
17. Nolan JJ et al. ADA/EASD precision medicine in diabetes initiative: an international perspective and future vision for precision medicine in diabetes. *Diabetes Care* 45, 261–266 (2022). [PubMed: 35050364]
18. Sideri S, Papageorgiou SN & Eliades T Registration in the international prospective register of systematic reviews (PROSPERO) of systematic review protocols was associated with increased review quality. *J. Clin. Epidemiol.* 100, 103–110 (2018). [PubMed: 29339215]
19. Booth A et al. The nuts and bolts of PROSPERO: an international prospective register of systematic reviews. *Syst. Rev.* 1, 2 (2012). [PubMed: 22587842]
20. Zhang H, Colclough K, Gloyn AL & Pollin TI Monogenic diabetes: a gateway to precision medicine in diabetes. *J. Clin. Invest.* 131, e142244 (2021). [PubMed: 33529164]
21. Garcin L et al. Neonatal diabetes due to potassium channel mutation: response to sulfonylurea according to the genotype. *Pediatr. Diabetes* 21, 932–941 (2020). [PubMed: 32418263]
22. Nathan DM & Group DER The diabetes control and complications trial/epidemiology of diabetes interventions and complications study at 30 years: overview. *Diabetes Care* 37, 9–16 (2014). [PubMed: 24356592]
23. Diabetes C et al. The effect of intensive treatment of diabetes on the development and progression of long-term complications in insulin-dependent diabetes mellitus. *N. Engl. J. Med.* 329, 977–986 (1993). [PubMed: 8366922]
24. Braffett BH et al. Risk factors for diabetic peripheral neuropathy and cardiovascular autonomic neuropathy in the diabetes control and complications trial/epidemiology of diabetes interventions and complications (DCCT/EDIC) study. *Diabetes* 69, 1000–1010 (2020). [PubMed: 32051148]
25. Svensson E et al. Early glycemic control and magnitude of HbA(1c) reduction predict cardiovascular events and mortality: population-based cohort study of 24,752 metformin initiators. *Diabetes Care* 40, 800–807 (2017). [PubMed: 28404659]

26. Lachin JM et al. Effect of glycemc exposure on the risk of microvascular complications in the diabetes control and complications trial–revisited. *Diabetes* 57, 995–1001 (2008). [PubMed: 18223010]
27. The relationship of glycemc exposure (HbA1c) to the risk of development and progression of retinopathy in the diabetes control and complications trial. *Diabetes* 44, 968–983 (1995). [PubMed: 7622004]
28. McCracken A, Gilster S, Connerton E, Canfield H & Painter-Romanello M Developing a tool to measure functional changes in advanced dementia. *Nursingconnections* 6, 55–66 (1993). [PubMed: 8366932]
29. Hainsworth DP et al. Risk factors for retinopathy in type 1 diabetes: the DCCT/EDIC study. *Diabetes Care* 42, 875–882 (2019). [PubMed: 30833368]
30. Perkins BA et al. Risk factors for kidney disease in type 1 diabetes. *Diabetes Care* 42, 883–890 (2019). [PubMed: 30833370]
31. Tesfaye S et al. Vascular risk factors and diabetic neuropathy. *N. Engl. J. Med.* 352, 341–350 (2005). [PubMed: 15673800]
32. Rawshani A et al. Relative prognostic importance and optimal levels of risk factors for mortality and cardiovascular outcomes in type 1 diabetes mellitus. *Circulation* 139, 1900–1912 (2019). [PubMed: 30798638]
33. Guo J et al. Optimal blood pressure thresholds for minimal coronary artery disease risk in type 1 diabetes. *Diabetes Care* 42, 1692–1699 (2019). [PubMed: 31248910]
34. Afshinnia F et al. Circulating free fatty acid and phospholipid signature predicts early rapid kidney function decline in patients with type 1 diabetes. *Diabetes Care* 44, 2098–2106 (2021). [PubMed: 34244329]
35. Mizokami-Stout K et al. Symptomatic diabetic autonomic neuropathy in type 1 diabetes (T1D): findings from the T1D exchange. *J. Diabetes Complicat.* 36, 108148 (2022).
36. Putnam NM et al. Neuropsychological outcomes in individuals with type 1 and type 2 diabetes. *Front Endocrinol. (Lausanne)* 13, 834978 (2022). [PubMed: 35317223]
37. Jeyam A et al. Diabetic neuropathy is a substantial burden in people with type 1 diabetes and is strongly associated with socioeconomic disadvantage: a population-representative study from Scotland. *Diabetes Care* 43, 734–742 (2020). [PubMed: 31974100]
38. Mizokami-Stout KR et al. The contemporary prevalence of diabetic neuropathy in type 1 diabetes: findings from the T1D exchange. *Diabetes Care* 43, 806–812 (2020). [PubMed: 32029635]
39. Orchard TJ et al. Haptoglobin 2–2 genotype and the risk of coronary artery disease in the Diabetes Control and Complications Trial/Epidemiology of Diabetes Interventions and Complications study (DCCT/EDIC). *J. Diabetes Complicat.* 30, 1577–1584 (2016).
40. Costacou T, Evans RW & Orchard TJ Glycaemic control modifies the haptoglobin 2 allele-conferred susceptibility to coronary artery disease in Type 1 diabetes. *Diabet. Med* 33, 1524–1527 (2016). [PubMed: 27028131]
41. Sun H et al. IDF Diabetes Atlas: Global, regional and country-level diabetes prevalence estimates for 2021 and projections for 2045. *Diabetes Res Clin. Pr.* 183, 109119 (2022).
42. Global, regional, and national burden of diabetes from 1990 to 2021, with projections of prevalence to 2050: a systematic analysis for the Global Burden of Disease Study 2021. *Lancet* 402, 203–234 (2023). [PubMed: 37356446]
43. Galaviz KI et al. Global diabetes prevention interventions: a systematic review and network meta-analysis of the real-world impact on incidence, weight, and glucose. *Diabetes Care* 41, 1526–1534 (2018). [PubMed: 29934481]
44. Ahlqvist E et al. Novel subgroups of adult-onset diabetes and their association with outcomes: a data-driven cluster analysis of six variables. *Lancet Diabetes Endocrinol.* 6, 361–369 (2018). [PubMed: 29503172]
45. Udler MS et al. Type 2 diabetes genetic loci informed by multi-trait associations point to disease mechanisms and subtypes: a soft clustering analysis. *PLoS Med.* 15, e1002654 (2018). [PubMed: 30240442]
46. Farrar D et al. Hyperglycaemia and risk of adverse perinatal outcomes: systematic review and meta-analysis. *BMJ* 354, i4694 (2016). [PubMed: 27624087]

47. Hoodbhoy Z et al. The impact of maternal preeclampsia and hyperglycemia on the cardiovascular health of the offspring: a systematic review and meta-analysis. *Am. J. Perinatol.* 40, 363–374 (2023). [PubMed: 33940650]
48. Wesolowska-Andersen A et al. Four groups of type 2 diabetes contribute to the etiological and clinical heterogeneity in newly diagnosed individuals: an IMI DIRECT study. *Cell Rep. Med* 3, 100477 (2022). [PubMed: 35106505]
49. Dennis JM, Shields BM, Henley WE, Jones AG & Hattersley AT Disease progression and treatment response in data-driven subgroups of type 2 diabetes compared with models based on simple clinical features: an analysis using clinical trial data. *Lancet Diabetes Endocrinol.* 7, 442–451 (2019). [PubMed: 31047901]
50. Shields BM et al. Patient stratification for determining optimal second-line and third-line therapy for type 2 diabetes: the TriMaster study. *Nat. Med.* 29, 376–383 (2023). [PubMed: 36477733]
51. Teede HJ et al. Association of antenatal diet and physical activity-based interventions with gestational weight gain and pregnancy outcomes: a systematic review and meta-analysis. *JAMA Intern Med* 182, 106–114 (2022). [PubMed: 34928300]
52. Lo YMD, Han DSC, Jiang P & Chiu RWK Epigenetics, fragmentomics, and topology of cell-free DNA in liquid biopsies. *Science* 372, eaaw3616 (2021). [PubMed: 33833097]
53. US FDA. Guidance document: clinical decision support software – guidance for industry and food and drug administration staff. <https://www.fda.gov/media/109618/> (2022).
54. Kamiza AB et al. Transferability of genetic risk scores in African populations. *Nat. Med.* 28, 1163–1166 (2022). [PubMed: 35654908]
55. Salamanca-Buentello F & Daar AS Nanotechnology, equity and global health. *Nat. Nanotechnol.* 16, 358–361 (2021). [PubMed: 33782590]
56. Fitipaldi H & Franks PW Ethnic, gender and other sociodemographic biases in genome-wide association studies for the most burdensome non-communicable diseases: 2005–2022. *Hum. Mol. Genet* 32, 520–532 (2023). [PubMed: 36190496]
57. Franks PW et al. Technological readiness and implementation of genomic-driven precision medicine for complex diseases. *J. Intern. Med.* 290, 602–620 (2021). [PubMed: 34213793]
58. Mansour Aly D et al. Genome-wide association analyses highlight etiological differences underlying newly defined subtypes of diabetes. *Nat. Genet.* 53, 1534–1542 (2021). [PubMed: 34737425]
59. Wong E et al. The Singapore national precision medicine strategy. *Nat. Genet.* 55, 178–186 (2023). [PubMed: 36658435]
60. Chikowore T, Kamiza AB, Oduaran OH, Machipisa T & Fatumo S Non-communicable diseases pandemic and precision medicine: is Africa ready? *EBioMedicine* 65, 103260 (2021). [PubMed: 33639396]
61. Franks PW et al. Precision medicine for cardiometabolic disease: a framework for clinical translation. *Lancet Diabetes Endocrinol.* (2023). 10.1016/S2213-8587(23)00165-1



**Box 1****Contemporary diagnostic definitions of the established forms of diabetes**

Based on the ADA Standards of Care 2022, diabetes can be classified into the following general categories:

1. T1D is a disease caused by autoimmune damage of the insulin-producing  $\beta$ -cells of the pancreatic islets, usually leading to absolute endogenous insulin deficiency, including latent autoimmune diabetes of adulthood.
2. T2D is a disease characterized by a progressive loss of adequate  $\beta$ -cell insulin secretion frequently in the presence of excess adiposity and insulin resistance.
3. GDM is a disease characterized by persistent hyperglycemia, often diagnosed in the second or third trimester of pregnancy, which was not determined to be prepregnancy diabetes. Other rarer types of diabetes include:
  1. MDM, which represents a rare form of diabetes due to specific genetic defects that cause  $\beta$ -cell dysfunction with minimal or no defects in insulin action and include neonatal diabetes and maturity-onset diabetes of the young.
  2. Secondary forms of diabetes, such as diabetes due to other causes such as the exocrine pancreas (for example, cystic fibrosis) and pancreatitis and drug- or chemical-induced diabetes (such as with glucocorticoid use, in the treatment of HIV/AIDS or after organ transplantation).

**Box 2**

**Revisions to definitions described in the first PMDI consensus report**

Several definitions used in the first consensus report on precision diabetes medicine<sup>2</sup> are revised here to (1) highlight key benchmarks used to determine the success of precision diabetes medicine in practice and (2) distinguish individual-level processes that can be objectively quantified and incorporated into prediction models from those that cannot, yet are integral to the transfer of medical or health recommendations to recipients.

The following terms are revised:

Precision medicine:

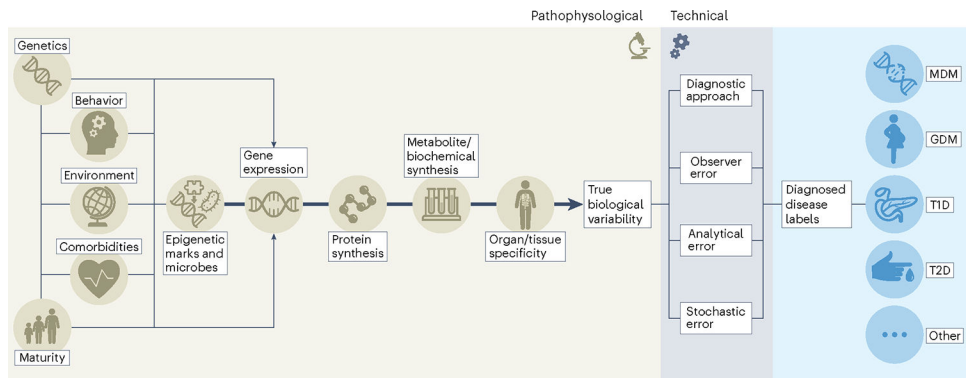
From: “Precision (or stratified) medicine emphasizes tailoring diagnostics or therapeutics (prevention or treatment) to subgroups of populations sharing similar characteristics, thereby minimizing error and risk while maximizing efficacy”<sup>2</sup>

To: “Precision medicine focuses on minimizing errors and improving accuracy in medical decisions and health recommendations. It seeks to maximize efficacy, cost-effectiveness, safety, access for those in need and compliance compared with contemporary evidence-based medicine. Precision medicine emphasizes tailoring diagnostics or therapeutics (prevention or treatment) to subgroups of populations sharing similar characteristics.”

Personalized and individualized medicine:

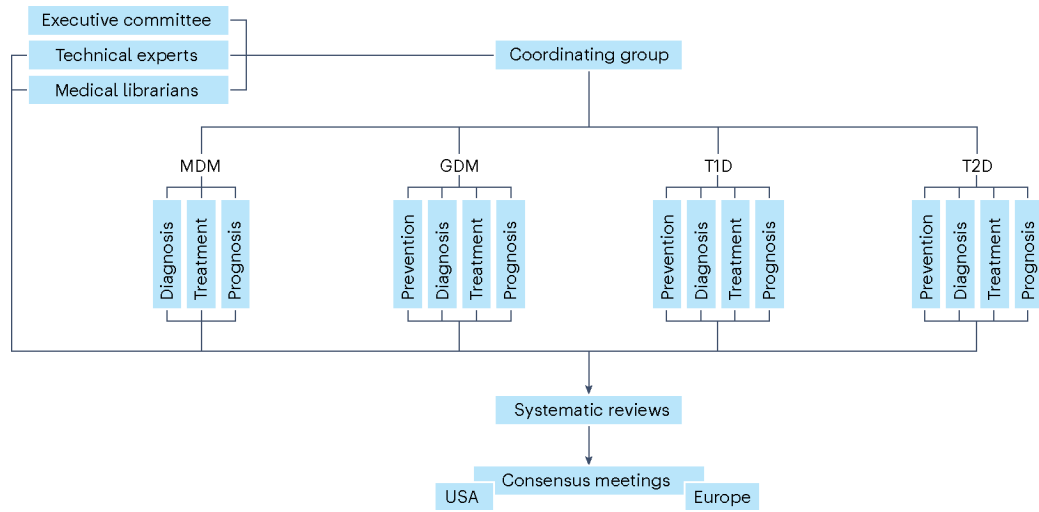
From: both terms are used interchangeably, defined as: “the final step in the process of translating knowledge into practice”<sup>2</sup>

To: “The use of a person’s own data to objectively gauge the efficacy, safety, and tolerability of therapeutics, and, subjectively, to tailor health recommendations and/or medical decisions to the individual’s preferences, circumstances, and capabilities”<sup>61</sup>.

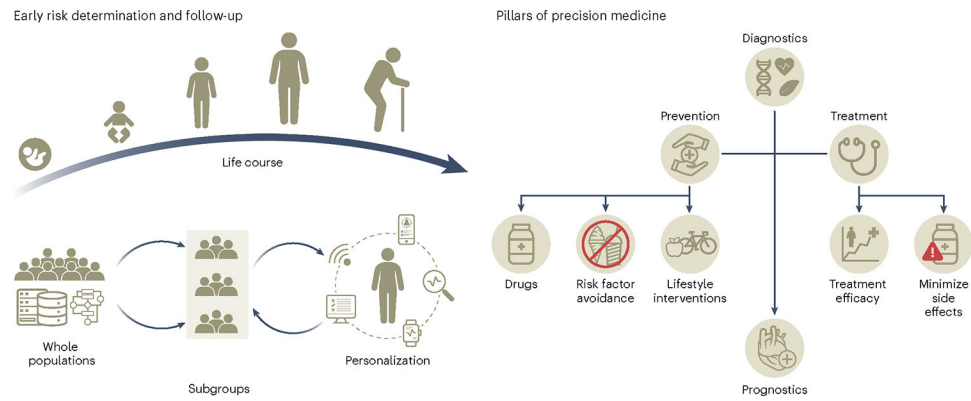


**Fig. 1 |. Sources of heterogeneity in diabetes.**

The success of precision diabetes medicine will be enhanced by successfully leveraging heterogeneity in diabetes. To do so will require parsing ‘signal’ from ‘noise’; the figure illustrates the key sources of heterogeneity within each of these domains.



**Fig. 2 |. Organogram of the PMDI consortium and workflow.**  
 Organizational structure of the PMDI consortium during the systematic review and consensus report processes.



**Fig. 3 |. Precision medicine across the life course and the role of precision diabetes medicine.** The collection of deep phenotypic, environmental and social data through the life course will allow the generation of prediction algorithms to identify individuals with shared characteristics that are more likely to benefit from targeted screening and preventive and treatment strategies for the prevention, diagnosis and management of diabetes.

**Table 1**

**Recommendations for future impact in precision diabetes medicine**

Domain	Milestones/priorities	Stakeholders
	Establishing mechanisms of research to identify novel and improved risk markers to form the basis for future clinical guidelines	Research to translation (researchers, healthcare providers)
	Developing and testing new assays for commonly used analytes with respect to sensitivity, specificity, the cost for implementation, cost of the assay to patient/ practice	Research to translation (researchers)
Benchmarking and technology	Standardization and sharing of laboratory technologies, assays and pipelines for biomarker assessment and quantification within healthcare systems and in point-of-care settings	Research to translation (researchers, healthcare providers)
	Standard reporting definitions and transparency in computational algorithms and artificial intelligence approaches to enhance access, reproducibility and transparency	Research to translation (researchers)
	Creating systems for routine assessment of heterogeneity in diabetes and revision to the current classification of diabetes across the life course concerning diagnosis, treatment, prognosis and prevention	Research to translation (researchers, healthcare providers)
	Improved estimation of the costs and benefits above current practice to translate precision medicine into approaches consistent with 'simple clinical measures'	Translation to implementation (healthcare providers, regulators, policymakers)
	A framework optimized to the target population will be necessary for moving precision diabetes research from evidence generation to clinical implementation	Research to translation to implementation (all stakeholders)
	Decision-support systems for healthcare practitioners will need to be developed, specifically for those making first contact with patients, likely in the setting of primary care	Translation to implementation (healthcare providers, regulators, policymakers)
Policy, implementation and liabilities	Forging alliances with regulatory and healthcare agencies to facilitate the coverage of precision medicine tools and decision-support aids, making them accessible and affordable, ideally with free global access	Translation to implementation (healthcare providers, regulators, policymakers, patients/relatives)
	Learning precision diabetes medicine from the MDM perspective, where rare forms may be most clinically ready but not yet widely implemented	Translation to implementation (healthcare providers, regulators, policymakers, the public, patients/relatives)
	Increase ethnic, geographic and sociodemographic diversity in biomedical research and healthcare access by addressing language barriers, cultural biases and geographical constraints	Research to translation (researchers, clinicians, the public, patients/relatives)
	Defining context-specific surveillance programs, systems and strategies to identify vulnerable and minority groups experiencing the highest burden of diabetes and related complications	Research to translation to implementation (all stakeholders)
Equity and community engagement	Evaluation of the impact of precision diabetes medicine approaches should involve patient advisory groups for impact and utility	Translation to implementation (healthcare providers, regulators, policymakers, the public, patients/relatives)
	National and international societies and advocacy groups should play an increasing and supportive role in the promotion, educational and research approaches to increase the implementation of 'standards of care' and access to precision medicine tools	Translation to implementation (healthcare providers, regulators, policymakers, the public, patients/relatives)
Commercialization and access	Generate a therapeutical framework optimized to the target populations, accessible to those in need, cost-effective and safe	Research to translation to implementation (all stakeholders)

Domain	Milestones/priorities	Stakeholders
	Recognition of the impact of precision diabetes from a 'patient journey' perspective, especially the impact of research on people living with diabetes	Translation to implementation (healthcare providers, regulators, policymakers, patients/relatives)
	Establishing open lines of communication, involving community stakeholders in decision-making processes and ensuring data privacy and security are crucial to building trust and maintaining engagement	Research to translation to implementation (all stakeholders)
	Establish programs to ensure that individuals are equipped with the knowledge and education to understand their personal risk factors, make informed decisions about preventive measures and actively engage in appropriate interventions for effective diabetes management	Translation to implementation (healthcare providers, regulators, policymakers, the public, patients/relatives)
Education	Combating digital health illiteracy. Efforts should be made to bridge the digital divide by providing resources, training and infrastructure to underserved populations, ensuring access to telemedicine, digital health tools and genetic testing services	Translation to implementation (healthcare providers, regulators, policymakers, the public, patients/relatives)
	Develop training programs for healthcare providers to equip them with the knowledge and skills necessary to effectively implement precision diabetes medicine approaches	Translation to implementation (healthcare providers, regulators, policymakers)