

What is my affiliation?

Fostering faculty engagement and institutional affiliation in publication authorship

Mirian Ramirez, *MLIS*
Elizabeth C. Whipple, *MLS, AHIP*
Ruth Lilly Medical Library
Indiana University School of Medicine, Indianapolis, IN

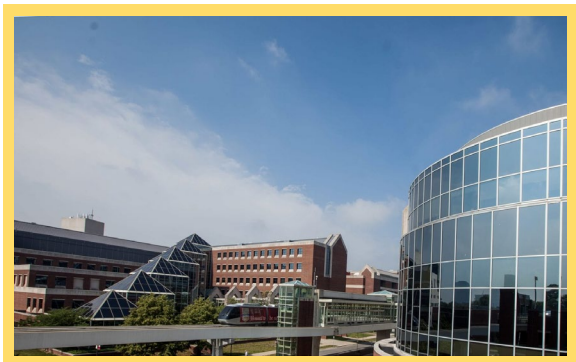
MLA | SLA'23
Professionalism & Leadership Papers 2 Session, May 18, 2023



Background

- Use of affiliations for publication authorship: acronyms, abbreviations, unit's name with or without a comma, accidental misspellings.
- Librarians search and collect bibliographic information and prepare custom reports based on the school's or department's publishing and impact.
- Librarians struggle to develop specific search strategies to find all faculty bibliographies in databases.
- Create "Affiliation lookup tool" with no coding/programming skills





Our institution

The IU Medical Library provides resources for and serves IU School of Medicine students, staff, residents and faculty at all the medical campuses.



INDIANA UNIVERSITY
SCHOOL OF MEDICINE

Academic Departments & Divisions	60
Clinical Training Facilities	60+
Centers & Institutes	13
Full-time Faculty	3,275
Volunteer Faculty	3,579
Part-time Faculty	258
Student body	1,452
Residents and Fellows	1,273

<https://medicine.iu.edu/>

The idea - first approach

- Excel slicer located in shared folder
- Searchable tool to input affiliation in OJS system for the Proceedings of IMPRS

Given Name * Family Name

How do you prefer to be addressed? Salutations, middle names and suffixes can be added here if you would like.

Preferred Public Name

Contact
 imprs@iupui.edu

Country
 United States

User Details
 https://orcid.org/0000-0002-...
 DRCID ID

Indiana University School of Medicine
 Affiliation

Proceedings of IMPRS

Current Archives About IMPRS (Program for Research and Scholarship)

Home / Archives / Vol. 5 No. 1 (2022) / Abstracts

Developing the Study Question: Relationship Between Cardiologist Age and Delivery of Aortic Valve Replacement

Alexander Shinnerl
 Indiana University School of Medicine
<https://doi.org/10.18060/2688>

Asad Torabi
 Division of Cardiology, Indiana University School of Medicine

Shannon Knapp, PhD
 Division of Cardiology, Indiana University School of Medicine

Khadajah Breathnach, MD
 Division of Cardiology, Indiana University School of Medicine

DOI: <https://doi.org/10.18060/2688>

Published: 2022-01-26

Issue: Vol. 5 No. 1 (2022)

Section: Abstracts

License

Copyright (c) 2022 Alexander Shinnerl, Asad Torabi, Shannon Knapp, PhD, Khadajah Breathnach, MD

This work is licensed under a Creative Commons Attribution 4.0 International License.

Abstract

Introduction: Aortic stenosis (AS) is the most common valve disease worldwide, but intervention for asymptomatic AS is variable and dependent on patient age, frailty, and co-morbidities. Recent studies have suggested that the greatest determinant of receipt of aortic valve replacement (AVR) is a supportive recommendation by the patient's cardiologist. Given that recommendations for cardiovascular therapies sometimes vary by clinician age, it is unclear whether cardiologist age is associated with referral for AVR.

School or Clinical Partners/Hospitals	Department	Division	Center/Institute	Campus
Clinical and Translational Sciences Insti...	Otolaryngology—Head and Neck ...	Pediatric Pulmonology, Aller...	Alcohol Research Center	Bloomington
Eskensazi Health	Pathology	Pediatric Radiology	Alzheimer's Disease Research Center	Evansville
Indiana University School of Medicine	Pediatrics	Pediatric Rheumatology	Bowen Center for Health Workforc...	Fort Wayne
ReggieStief Institute	Pharmacology and Toxicology	Pediatric Surgery	Brown Center for Immunotherapy	Gary
Richard L. Rousebosh VA Medical Center	Physical Medicine and Rehabilita...	Plastic Surgery	Center for Aging Research	Muncie
Richard M. Fairbanks School of Public H...	Psychiatry	Pulmonary Medicine, Critical...	Center for Biological Microscopy	North Bend
Riley Hospital for Children	Radiation Oncology	Radiologic Sciences	Center for Biomedical Informatics	Terre Haute
(blank)	Radiology and Imaging Sciences	Rheumatology	Center for Biomedical Innovation	West Lafayette

Affiliation name	Incorrect Use
Department of Anatomy, Cell Biology and Physiology, Indiana University School of Medicine	Use for: Department of Anatomy, Cell Biology & Physiology
Department of Anesthesia, Indiana University School of Medicine	Use for: Department of Anesthesiology
Department of Biochemistry and Molecular Biology, Indiana University School of Medicine	Use for: Department of Biochemistry & Molecular Biology
Department of Biostatistics and Health Data Science, Indiana University School of Medicine	Use for: IUSM Department of Biostatistics - Department of Biostatistics
Department of Dermatology, Indiana University School of Medicine	

Excel slicer

The idea

Affiliation Lookup tool

- Using Datawrapper (datawrapper.de) free web tool we uploaded the final version of the table.
- Table options
- Searchable dataset
- Allows recurrent updates
- Generates embeddable code



IU School of Medicine Affiliation Lookup

Affiliation lookup

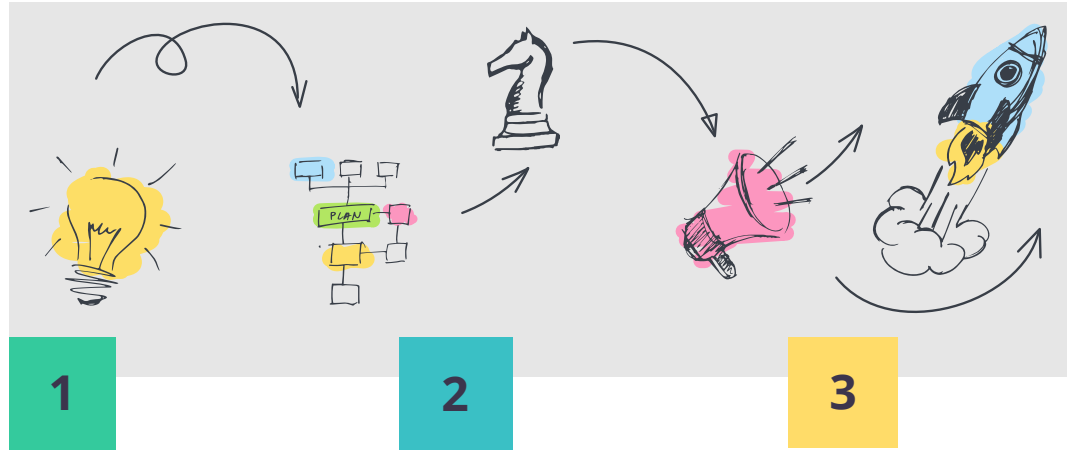
When you start typing in the search, you will see a list of auto-suggested results. Use the arrow icons to navigate the pages.

Search in table Page 1 of 13 >

Affiliation name	Incorrect Use
Department of Anatomy, Cell Biology and Physiology, Indiana University School of Medicine	Use for: Department of Anatomy, Cell Biology & Physiology
Department of Anesthesia, Indiana University School of Medicine	Use for: Department of Anesthesiology
Department of Biochemistry and Molecular Biology, Indiana University School of Medicine	Use for: Department of Biochemistry & Molecular Biology
Department of Biostatistics and Health Data Science, Indiana University School of Medicine	Use for: - IUSM Department of Biostatistics - Department of Biostatistics
Department of Dermatology, Indiana University School of Medicine	
Department of Emergency Medicine, Indiana University School of Medicine	Use for: IUSM Department of Emergency Medicine
Division of Clinical Informatics, Department of Emergency Medicine, Indiana University School of Medicine	
Division of Clinical Ultrasound, Department of Emergency Medicine, Indiana University School of Medicine	

<https://tinyurl.com/IUSMaffiliationlookup>

Our work process



1 Collect data

Collect all department, divisions, centers, hospitals names.

Create Excel spreadsheet

Using Excel slicer visual filter

2 Build table using Datawrapper

Table with searchable option

3 Display table data online

Look for options and points of access.

LibGuides embedding code <script>

Searchable option

Steps to create the affiliation search

1

Collect data and create excel spreadsheet

=CONCATENATE()

Merge/combine text from multiple strings of cells from the left

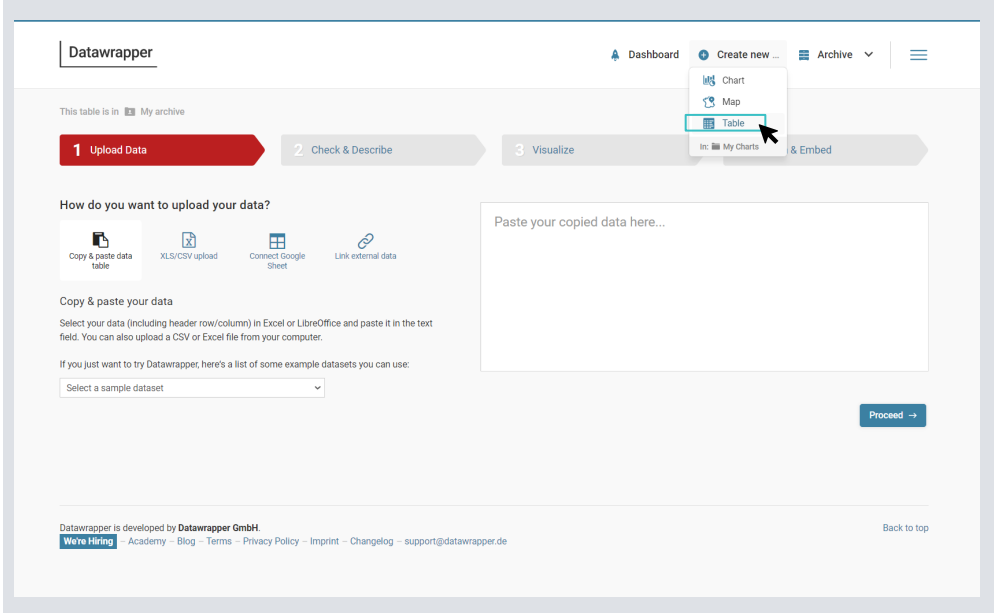
School or Clinical Partners/Hospital	Department	Division	Center/Institute	Campus	Complete Affiliation name	Incorrect Use
Indiana University School of Medicine	Pediatrics		Ryan White Center for Pediatric Infectious Disease and Global Health		Ryan White Center for Pediatric Infectious Disease and Global Health, Department of Pediatrics, Indiana University School of Medicine	Use for: - Ryan White Center
Indiana University School of Medicine				Fort Wayne	Indiana University School of Medicine-Fort Wayne	Use for: -IU School of Medicine-Fort Wayne
Indiana University School of Medicine	Pediatrics	Department of Pediatrics	Herman B Wells Center for Pediatric Research		Herman B Wells Center for Pediatric Research, Department of Pediatrics, Indiana University School of Medicine	Use for: - Wells Center - Department of Pediatrics and the Herman B Wells Center

Steps to create the affiliation search

2

Build table using Datawrapper

- Upload or connect to Google sheet or copy/paste data.
- Follow the steps in the Datawrapper Wizard to generate embedded code.
- Review the Visualization features (Searching capabilities).



The screenshot shows the Datawrapper interface. At the top, there's a navigation bar with 'Dashboard', 'Create new ...', and 'Archive'. Below that, a progress bar shows three steps: '1 Upload Data' (highlighted in red), '2 Check & Describe', and '3 Visualize'. A dropdown menu is open over the '3 Visualize' step, showing options: 'Chart', 'Map', and 'Table' (which is highlighted and has a mouse cursor over it). Below the progress bar, there's a section titled 'How do you want to upload your data?' with four options: 'Copy & paste data table', 'XLS/CSV upload', 'Connect Google Sheet', and 'Link external data'. Underneath, there's a 'Copy & paste your data' section with instructions and a 'Select a sample dataset' dropdown menu. A 'Proceed →' button is at the bottom right. At the very bottom, there's a footer with 'Datawrapper is developed by Datawrapper GmbH.' and a 'Back to top' link.

<https://www.datawrapper.de/>

Steps to create the affiliation search

3

Display of the search tool

- Decide where you want to display the final product. We chose the LibGuide *Scholarly Publishing Guide* << Authorship to make it accessible.
- Embed widget code.

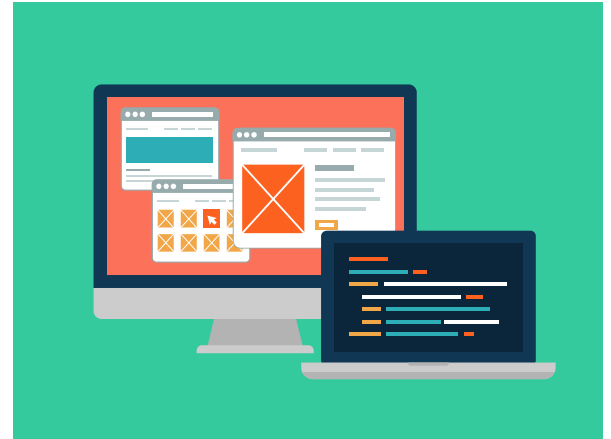
The screenshot shows the Indiana University School of Medicine LibGuide page for "Authorship & Affiliation". The page is titled "Scholarly Publishing Guide" and includes a search bar. A navigation menu on the left lists various topics, with "Authorship & Affiliation" highlighted. The main content area is divided into two sections: "Authorship Considerations" and "IU School of Medicine Affiliation Lookup". The "Authorship Considerations" section lists several topics, including "Defining the Roles of Authors and Contributors", "Authorship and Contributorship", and "Authorship & Authorship Responsibilities". The "IU School of Medicine Affiliation Lookup" section includes a search bar and a table of results.

Affiliation name	Incorrect Use
Department of Anatomy, Cell Biology and Physiology, Indiana University School of Medicine	Use for: Department of Anatomy, Cell Biology & Physiology
Department of Anesthesia, Indiana University School of Medicine	Use for: Department of Anesthesiology
Department of Biochemistry and Molecular Biology, Indiana University School of Medicine	Use for: Department of Biochemistry & Molecular Biology
Department of Biostatistics and Health Data Science, Indiana University School of Medicine	Use for: - IUSM Department of Biostatistics - Department of Biostatistics
Department of Dermatology, Indiana University School of Medicine	
Department of Emergency Medicine, Indiana University School of Medicine	Use for: IUSM Department of Emergency Medicine
Division of Clinical Informatics, Department of Emergency	

<https://iupui.libguides.com/ScholarlyPublishing/AuthorshipAffiliation>

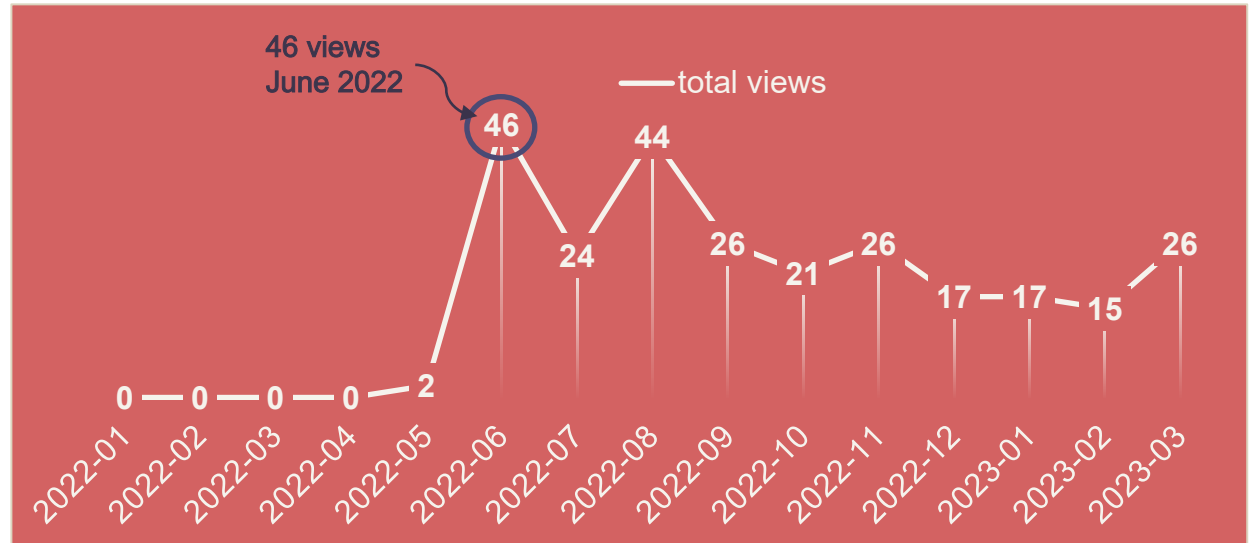
dissemination and impact

- RLML Scholarly Publishing LibGuide
<https://iupui.libguides.com/ScholarlyPublishing>
- Partnership with Faculty
- Promoting in Departments
- Promote in School's Faculty Committees
- Research consults
- Orientation sessions
- Monthly school's publications search



Statistics- LibGuide pages views

Authorship & Affiliation page 01-2022 to 03-2023 (264 total views)



Conclusions and future actions

- An affiliation tool can lead toward better consistent affiliation use
- Consistent affiliation use:
 - leads to **better tracking** of faculty productivity
 - can improve **national and international reputation** of their research
 - **reduces future indexing errors** in databases
- An affiliation tool has led to faculty engagement on an individual/departmental level
- Working to achieve greater adoption/champion from within School's Research Affairs

thank you

Contact us

Mirian Ramirez
mirirami@iu.edu

Elizabeth C. Whipple
ewhipple@iu.edu

Ruth Lilly Medical Library

*Indiana University School of Medicine,
Indianapolis, IN, USA*

<https://library.mednet.iu.edu>