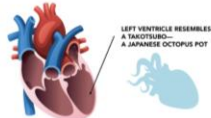
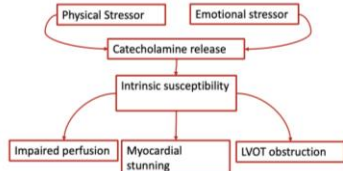




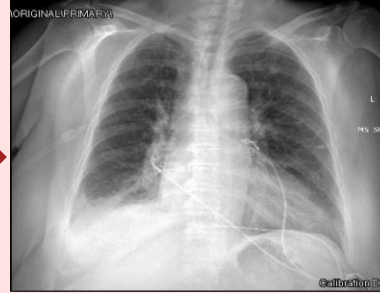
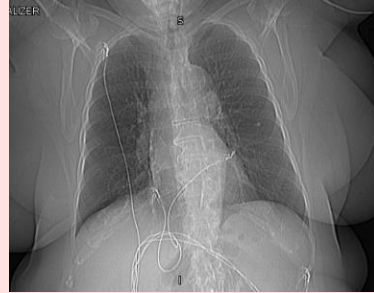
Octopus Unveiled: Sudden Onset Takotsubo Cardiomyopathy as a MI Mimic in Women

Kathleen Ho¹, Kate Adaniya¹, Brianna Bell¹, Ella Boardley¹, Mariel Luna Hinojosa, MD¹
Affiliations: Indiana University School of Medicine¹

BACKGROUND: Takotsubo Cardiomyopathy Development



This case evaluates the hospital course of a common MI mimic in women: Takotsubo Cardiomyopathy. Our patient had a unique rapid onset of less than two hours, making the inclusion on differential diagnosis integral in at risk populations for proper interventions and best outcomes.



Initial encounter

Admitted for upper respiratory symptoms, treat pneumonia

Ejection Fraction:

69%
Troponins: 9
No pertinent cardiac findings

2 Hours Later

Worsening dyspnea and diaphoresis, hypoxia requiring supplemental oxygen
EKG: Diffuse ST elevation in lateral leads
Elevated troponin to 125

STEMI Code Activated

Patient intubated and sent to cath lab, found complete occlusion of the LAD; LVEF estimated 25%; Diffuse wall motion abnormalities noted
Unsuccessful PCI ---> vessel perforation and cardiac tamponade

Follow up

Discharged after 25 days in the hospital
Repeat echo at 5 week showed recovered LVEF of 54%

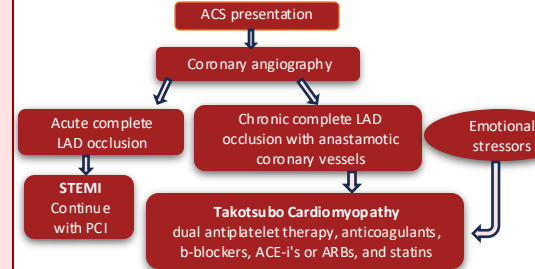
Hospital Course

ICU stay for Intra-aortic balloon pump and pericardial drain were placed; Course complicated by oliguric AKI requiring CRRT, and afib with RVR

CASE PRESENTATION

A 71-year-old female with medical history of diabetes mellitus and hypertension presenting with severe anxiety and dyspnea at one year anniversary of husband's death

DISCUSSION:



CONCLUSIONS

- TCM can mimic ACS; therefore, cardiac catheterization is indicated to rule out underlying ischemic event, especially when ST elevation is seen on EKG
- Unique case of witnessed onset of TCM while in hospital setting, showing importance of identifying diagnosis to provide correct interventions
- Postmenopausal women with comorbidities are at higher risk for TCM
- Successful intervention with IABP challenges prior studies and suggests its future utility in TCM cases

REFERENCES

"Takotsubo Cardiomyopathy." *SCAI - Seconds Count*, www.secondscount.org/condition/takotsubo-cardiomyopathy. Accessed 29 Feb. 2024.