



Published in final edited form as:

Gene. 2020 May 15; 738: 144458. doi:10.1016/j.gene.2020.144458.

## ARID3A and ARID3B induce stem promoting pathways in ovarian cancer cells

Paige Dausinas<sup>1,2</sup>, Kirthi Pulakanti<sup>3,4,5</sup>, Sridhar Rao<sup>3,4,5</sup>, Jennifer M. Cole<sup>6</sup>, Richard Dahl<sup>2,7</sup>, Karen D. Cowden Dahl<sup>1,2,6,8,9,10</sup>

<sup>1</sup>Department of Biochemistry and Molecular Biology, Indiana University School of Medicine-South Bend, South Bend, Indiana, United States of America

<sup>2</sup>Harper Cancer Research Institute, South Bend, Indiana, United States of America

<sup>3</sup>Department of Cell Biology, Neurobiology, and Anatomy, Medical College of Wisconsin, Milwaukee, WI 53226 USA

<sup>4</sup>Blood Research Institute, Versiti, Milwaukee, WI 53226 USA

<sup>5</sup>Department of Pediatrics, Medical College of Wisconsin, Milwaukee, WI 53226 USA

<sup>6</sup>Kabara Cancer Research Institute, Gundersen Medical Foundation

<sup>7</sup>Department of Microbiology and Immunology, Indiana University School of Medicine, South Bend, IN, United States of America

<sup>8</sup>Department of Chemistry and Biochemistry, University of Notre Dame, Notre Dame, Indiana, United States of America

<sup>9</sup>Indiana University Melvin and Bren Simon Cancer Center, Indianapolis, Indiana, United States of America

### Abstract

ARID3A and ARID3B are paralogs from the AT-Rich interactive Domain (ARID) family. ARID3A and ARID3B associate to regulate genes in B-cells and cancer. We were the first to demonstrate that ARID3B regulates stem cell genes and promotes the cancer stem cell phenotype. Importantly, different knockout phenotypes in mice and distinct patterns of expression in adult animals suggests that ARID3A and ARID3B may have unique functions. In addition, high levels of ARID3B but not ARID3A induce cell death. Our goal was to express ARID3A, ARID3B, or both genes at a moderate level (as can be observed in cancer) and then identify ARID3 regulated genes. We transduced ovarian cancer cells with ARID3A-GFP, ARID3B-RFP, or both. RNA-sequencing was conducted. ARID3A and ARID3B regulated nearly identical sets of genes. Few genes (<5%) were uniquely regulated by ARID3A or ARID3B. ARID3A/B induced genes involved in cancer and stem cell processes including: Twist, MYCN, MMP2, GLI2, TIMP3, and WNT5B. We found that ARID3A and ARID3B also induced expression of each other, providing evidence of the cooperativity. While ARID3A and ARID3B likely have unique functions in

<sup>10</sup>To whom correspondence should be addressed. Corresponding Author Present Address: Kabara Cancer Research Institute, Gundersen Medical Foundation, 1300 Badger Street, La Crosse, WI 54601, Phone: 608-775-3606, Fax: 608-775-6602, kdcowden@gundersenhealth.org.

distinct contexts, they are largely capable of regulating the same stem cell genes in cancer cells. This study provides a comprehensive list of genes and pathways regulated by ARID3A and ARID3B in ovarian cancer cells.

## Keywords

ARID3A; ARID3B; transcription factors; stemness; cancer

---

## 1. Introduction

The AT-Rich Interactive Domain (ARID) family of DNA binding proteins and involved in chromatin remodeling and the regulation of gene expression. These proteins are characterized by the ARID DNA-binding domain, a highly conserved sequence of ~100 amino acids (Gregory et al., 1996). ARID3B has an ARID domain that shares 89.9% amino acid identity with its paralogue ARID3A (also known as Bright) (Herrscher et al., 1995; Raney et al., 2011; Rhee et al., 2014). The ARID proteins include histone deacetylases (ARID4A/B), members of the Switch/Snf complex (ARID1A and ARID1B), and other transcriptional regulators (Wilsker et al., 2005). In particular the ARID3 subfamily acts as transcriptional regulators by binding to specific DNA consensus sites to regulate gene expression. There are 3 ARID3 proteins: ARID3A, ARID3B, and ARID3C (Kim et al., 2007b; Tidwell et al., 2011; Samyesudhas et al., 2014). ARID3A is the most widely studied of the family member and plays a role in B cell immunity (Ratliff et al., 2014). Moreover, we published that ARID3A cooperates with ARID3B in the regulation of genes in B cells (Kurkewich et al., 2016). *Arid3a* and *Arid3b* are imperative for development. *Arid3b*<sup>-/-</sup> null embryos die mid-gestation with defects the heart, neural tissue, craniofacial structures, limb buds, and the apical endodermal ridge (Takebe et al., 2006; Casanova et al., 2011; Webb et al., 2011). Nearly 100% of *Arid3a*<sup>-/-</sup> embryos die mid-gestation with hematopoietic defects (Webb et al., 2011). During embryonic development ARID3A and ARID3B are not functionally redundant (Webb et al., 2011).

ARID3A is required for placental development as *Arid3a*<sup>-/-</sup> embryos have intrauterine growth restriction and aberrant placental structures (Rhee et al., 2014; Rhee et al., 2017). ARID3A is mostly restricted to hematopoietic tissue in the adult, embryonic stem cells (ESCs), and trophectoderm (Ratliff et al., 2014; Rhee et al., 2014; Rhee et al., 2017). ARID3B is widely expressed in adult tissues including differentiated epithelium (Samyesudhas et al., 2014). Additionally, ARID3B is expressed in stem cell populations. ARID3A and ARID3B are jointly expressed stem cell populations including ESCs, induced pluripotent stem cells (iPSCs) and cancer stem cells (CSCs) (Wang et al., 2006; Kobayashi et al., 2012; Samyesudhas et al., 2014; Liao et al., 2016). In fact, both proteins are associated with pluripotency factors in ESCs specifically in Nac1 containing complexes (Wang et al., 2006). We were the first to demonstrate that ARID3B induces stemness in cancer cells by inducing expression of stem cell genes including *Prom1* (Roy et al., 2014; Bobbs et al., 2015; Roy et al., 2018). Liao et al confirmed our results and showed that ARID3A and ARID3B co-immunoprecipitate to regulatory region of stem cell genes to promote cancer stemness (Liao et al., 2016).

However, how the ARID3 proteins cooperate in regulating stemness has not been evaluated. We wanted to ascertain if co-expression of ARID3A and ARID3B is required to regulate stem cell genes or if ARID3A and ARID3B have unique functions. In this study we perform the first genome wide screen for ARID3A, ARID3B, and ARID3A/B regulated genes and pathways. We found that over 96% of the ARID3 regulated genes can be regulated by either ARID3A or ARID3B.

## 2. Materials and Methods

### Cell Culture

Cell lines were grown at 37°C with 5% CO<sub>2</sub>. OVCA429 and OVCA433 cells (provided by Dr. Bast, MD Anderson Cancer Center, Houston, TX) (Bast et al., 1981) were grown in Minimal Essential Medium (MEM);. Media was supplemented with 10% fetal bovine serum (FBS) (Atlas, Ft. Collins, CO), 0.1 mM L-glutamine, 1mM sodium pyruvate, 50 U/mL penicillin, and 50 µg/mL streptomycin. OVCA433, OVCA429, and Kuramochi cells were lentivirally transduced with ARID3A-GFP (Genecopia, Rockville, MD), ARID3B (Gentarget), both ARID3A and ARID3B, GFP (Gentarget, San Diego, CA), Red Fluorescent Protein (RFP) (Gentarget), or both RFP and GFP as previously described (Joseph et al., 2012). Kuramochi cells (provided by Anirban Mitra, Indiana University) (Hamilton et al., 1983) were grown in RPMI media with 20% FBS and 10mg/mL insulin. Cell lines were authenticated on October 1, 2018, at ATCC by STR profiling. For Figure 4, OVCA429 cells were transduced with ARID3B-GFP (ARID3B fused to GFP to monitor localization and expression).

### Fluorescence activated cell sorting (FACS)

FACS analysis was conducted at the Indiana University School of Medicine-South Bend at the Imaging and Flow cytometry Core Facility by Dr. Charles Tessier on the BD Biosciences FACSaria III cell sorter. Sorted cells were cultured and RNA was extracted with the Qiagen RNAeasy kit. For the cells used in RNA-seq, OVCA433 cells were transduced with RFP, GFP, RFP and GFP, ARID3A-GFP, ARID3B-RFP, or ARID3A and ARID3B. Cells were sorted and collected for GFP, RFP, or dual GFP and RFP fluorescence. In Figure 4, OVCA429 cells were transduced with ARID3B fused with GFP (ARID3B-GFP) in order to monitor expression and localization of ARID3B. RNA was isolated from cells using Trizol (Invitrogen, Carlsbad, CA ) 6, 8, and 12 days after sorting. RT-qPCR was conducted for TNF, TNFRSF1B, TNFSF10, and RIPK at day 6.

### RNA-seq

RNA-seq was conducted on OVCA433 cells (expressing ARID3A, ARID3B, or GFP/RFP) in triplicate. RNA-seq libraries were prepared at the University of Notre Dame Genomics and Bioinformatics Core Facility. Total RNA samples were diluted 5 times prior to analysis. Sample concentration was measured using Qubit RNA HS Assay Kit (PN: Q32855; Invitrogen, Carlsbad, CA, USA). Total RNA evaluate with Agilent Bioanalyzer 2100 System and Agilent RNA 6000 Nano Kit (PN: 5067-1511; Agilent Technologies, Santa Clara, CA, USA). Samples with an RNA Integrity Number (RIN) of 7 or higher were qualified for library preparation. Sample 2 and Sample 4 with RIN of 6.9 were included in the study.

Total RNA input was normalized to 150 ng. Polyadenylated RNA molecules were selected for using NEBNext Poly(A) mRNA Magnetic Isolation Module (PN: E7490S/L; New England BioLabs, Ipswich, MA, USA). Enriched polyadenylated RNA was converted into an Illumina library using NEBNext Ultra II RNA Library Prep with Sample Purification Beads (PN: E7775S/L; New England BioLabs, Ipswich, MA, USA) and barcoded with NEBNext Multiplex Oligos for Illumina (Index Primers Set 1) (PN: E7335S/L; New England BioLabs, Ipswich, MA, USA) or NEBNext Multiplex Oligos for Illumina (Index Primers Set 2) (PN: E7500S/L; New England BioLabs, Ipswich, MA, USA). Indexed libraries were quantitated with Qubit dsDNA HS Assay Kit (PN: Q32854; Invitrogen, Carlsbad, CA, USA). Library quality assessment with Agilent DNA 7500 Kit (PN: 5067-1506; Agilent Technologies, Santa Clara, CA, USA). The individual libraries were normalized, and equal molar amounts were multiplexed into a single pool. Molar concentration of the multiplex pool was determined with KAPA Library Quantification Kits for Illumina (PN: KK4824; KAPA Biosystems, Boston, MA, USA). Materials used:

NEBNext Ultra II RNA Library Prep with Sample Purification Beads (PN: E7775S/L; New England BioLabs, Ipswich, MA, USA), NEBNext Poly(A) mRNA Magnetic Isolation Module (PN: E7490S/L; New England BioLabs, Ipswich, MA, USA), NEBNext Multiplex Oligos for Illumina (Index Primers Set 1) (PN: E7335S/L; New England BioLabs, Ipswich, MA, USA), NEBNext Multiplex Oligos for Illumina (Index Primers Set 2) (PN: E7500S/L; New England BioLabs, Ipswich, MA, USA), Agilent RNA 6000 Nano Kit (PN: 5067-1511; Agilent Technologies, Santa Clara, CA, USA), Agilent DNA 7500 Kit (PN: 5067-1506; Agilent Technologies, Santa Clara, CA, USA), Qubit RNA HS Assay Kit (PN: Q32855; Invitrogen, Carlsbad, CA, USA), Qubit dsDNA HS Assay Kit (PN: Q32854; Invitrogen, Carlsbad, CA, USA), and KAPA Library Quantification Kits for Illumina (PN: KK4824; KAPA Biosystems, Boston, MA, USA). Libraries were sequenced on an Illumina NextSeq 500, paired-end, 75 total cycles to obtain greater than 20 million reads per sample. Reads were aligned to the human genome (hg19) using STAR (PMC3530905). Gene level expression was calculated (Fragments per Kilobase per Million-FPKM) using Cufflinks (PMC3146043) and differentially expressed genes identified using DE-seq (PMC3218662). For all algorithms, default parameters were utilized unless otherwise noted.

## Gene Expression

RNA from OVCA429, OVCA433, or Kuramochi cells was isolated using RNAeasy (Qiagen, Germantown, MD), according to the manufacturer's instructions. Complementary DNA (cDNA) for RT-qPCR was prepared from 500 ng of RNA using High Capacity cDNA Reverse Transcription Kit (Life Technologies, Waltham, MA) as directed. Reactions were run either using iTaq Universal Probes Supermix (Bio-Rad) or Sso Fast EvaGreen Supermix (Bio-Rad). All gene expression primer sets were obtained from Integrated DNA Technologies (Coralville, IA) (Table 6) quantitative reverse transcribed polymerase chain reaction (RT-qPCR) reactions were run in triplicate and normalized to expression of GAPDH. Trizol (Thermo Fisher, Waltham, MA) was used to isolate RNA from ARID3B-GFP expressing cells (Fig. 4). RT-qPCR was conducted as described for TNF, TNFRSF1B, TNFSF10, and RIPK and normalized to GAPDH.

## Western Blots

Whole-cell lysates were obtained by lysing OVCA429, OVCA433, or Kuramochi cells (parental and expressing GFP, ARID3A, or ARID3B) in RIPA (50mM Tris pH7.5, 150mM NaCl, 1% NP-40, 0.5% EDTA, and 1X Halt Protease Inhibitor Cocktail (Pierce, Rockford, IL)). Protein concentration was determined using BCA assay according to standard protocol (Pierce, Rockford, IL). Proteins were detected using the following antibodies: ARID3B (Rabbit Polyclonal, Bethyl Laboratories, Montgomery, TX), Histone H3 (Rabbit polyclonal, Cell Signaling Technology, Danvers, MA), and ARID3A (Rabbit Polyclonal, Active Motif, Carlsbad, CA) followed by a secondary anti-rabbit HRP-conjugated antibody (Cell Signaling Technology, Danvers, MA). Imaging and quantitation were conducted using a Bio-Rad ChemiDoc Touch Imaging System, running Imager Lab Software (Hercules, CA).

## Chromatin immunoprecipitation (ChIP)

ChIP was conducted on OVCA429 cells expressing GFP, ARID3A, or ARID3B using the Epikwik Chromatin Immunoprecipitation Kit (Epigentek, Farmingdale, NY). Briefly, cells were collected and chromatin-protein complexes were fixed via formaldehyde. Nuclear lysates were prepared and DNA was sheared via sonication. IPs were conducted using mouse IgG (supplied with kit), anti-ARID3B from Bethyl Laboratories (Montgomery, TX), or anti-ARID3A (Active Motif, Carlsbad, CA). After immunoprecipitation cross-links were reversed, DNA was purified, and qPCR was conducted on genes of interest including GAPDH (negative control-supplied with kit), GLI2, NES, TIMP3, and MYCN. For MYCN we used two different sets of primers that surround regions that contain either a canonical ARID3A binding motif or an ARID3B binding motif (Bobbs et al., 2015). qPCR is represented as a percentage of the total amplification of the input.

Primers for ChIP:

TIMP3 Forward 5'-TACAGACGGGGTTTCACCAT-3'

TIMP3 Reverse 5'-AAGCTAGGTGGGGTGAACCT-3'

NES Forward 5'-AGCACCTTGGAGGCTGATTA-3'

NES Reverse 5'-ATGAGACGGAGGGGATCTTT-3'

GLI2 Forward 5'-CACCATGCCAGCTAATTTT-3'

GLI2 Reverse 5'-TCCCTTCTGGCTTCCAAATA-3'

MYCN ARID3A site Forward 5'-CCCCCTTTGGTGTGAGTC-3'

MYCN ARID3A site Reverse 5'-ACCTAGACCCCAGCCAGTGT-3'

MYCN ARID3B site Forward 5'-CATCTGCCCTCCTCAGACTC-3'

MYCN ARID3B site Reverse 5'-CTGGCTAGGAGAGCAACAGC-3'

## Statistics

Statistics were conducted on qPCR (RT-qPCR and ChIP-qPCR) data using Student t-tests on Prism GraphPad . Statistical significance was assigned to comparisons with a p-value of 0.05 or lower. Over-representation of Gene Ontology (GO) terms was calculated using a Chi-Squared Test.

## 3. Results

Previously we found that ARID3A and its paralog ARID3B cooperate in gene regulation in B cells and that ARID3A and ARID3B are co-expressed in ovarian cancer cells (Bobbs et al., 2015; Kurkewich et al., 2016). Additionally, we demonstrated that ARID3A and ARID3B are co-expressed with the stem cell marker CD133 in the same regions of tumors in human ovarian cancer (Roy and Cowden Dahl, 2018). We found that ARID3A and ARID3B dimerize in order to induce expression of target genes (Kurkewich et al., 2016). Others also concluded that ARID3B is important for nuclear retention of ARID3A (Kim et al., 2007a; Liao et al., 2016). Since we showed that ARID3B regulates stem cell genes and promotes a cancer stem cell phenotype and ARID3B is also expressed in ovarian cancer cells, we tested the hypothesis that ARID3A and ARID3B both regulate stem cell genes in ovarian cancer cell lines. Importantly, we previously demonstrated that high levels of ARID3B expression induces cell death through the TNF and TRAIL pathways (Joseph et al., 2012). Therefore, we wanted to identify ARID3A and ARID3B regulated genes induced by moderate levels that do not lead to cell death in ovarian cancer cell lines. We lentivirally transduced OVCA433 cells with ARID3A fused with GFP (ARID3A-GFP) first. Then we transduced cells with ARID3B co-expressing RFP (ARID3B-RFP). The order of transductions was critical as we have reported that 70% of the cell die via the TNF/TRAIL pathways when cells are transduced with ARID3B (Joseph et al., 2012). The surviving cells have lower levels of ARID3B expression; therefore it is very high expression of ARID3B that induces cell death (Joseph et al., 2012). Cell death was not seen when cells were transduced with ARID3A (not shown), and is consistent with published data (Pratama et al., 2015). ARID3A/ARID3B expressing cells were fluorescence activated cell sorted (FACSeD) for RFP, GFP, or both RFP and GFP. Cells were expanded and RNA was collected in triplicate. We generated cDNA libraries and performed RNA-sequencing. We based our cut-off for significance genes that were significantly changed in triplicates at least 3-fold (Table 1). Surprisingly we found that ARID3A, ARID3B, and the combination of ARID3A and ARID3B resulted in activation of the same genes (391-491 genes were regulated by ARID3A or ARID3B). There were very few genes (13-23) that were induced by one protein alone (or the combination of ARID3A/B) (Table 2). Therefore, over 96% of the ARID3 regulated genes were regulated by both proteins (ARID3A and ARID3B). We are still investigating the mechanism. One possibility is that ARID3A and ARID3B induce the same genes in ovarian cancer cells and are almost completely functionally redundant. Another possibility is that ARID3A and B dimerize to regulate genes and that there is a feedforward mechanism. We found that expression of ARID3A induced ARID3B by 2.2-fold. ARID3B induced ARID3A by 8.8-fold. This implies that heterodimerization may be one mechanism for ARID3A/B target gene regulation.



We selected several genes to validate for regulation by ARID3A and ARID3B. For validation we chose to use three ovarian cancer cell lines: OVCA429, OVCA433, and Kuramochi cells. We chose cell lines that represent a couple of different types of ovarian cancer. OVCA429 and OVCA433 are likely not high-grade serous (HGSOC) as they do not have mutations in TP53. Kuramochi cells have genetic alterations consistent with HGSOC, which is the type of ovarian cancer that is most common (Mitra et al., 2015). For validation purposes we identified ten genes induced by ARID3 that ranged from highly induced to modestly induced. In particular we chose to validate the modestly induced TP53 and MYC as we have already validated those as direct ARID3B targets (Bobbs et al., 2015). Interestingly, on the RNA-seq, there was an additive effect of expressing both ARID3A and ARID3B for about half of the genes (values in red on Table 3). OVCA429, OVCA433, and Kuramochi cells were transduced with ARID3A and ARID3B. Expression was confirmed by RT-qPCR and western blot (Fig. 1 and Supplemental Fig. 1). RT-qPCR was conducted on cells for the ARID3A/B regulated genes in Table 3. For all RT-qPCR gene expression was normalized GAPDH and expressed as a fold change over the endogenous gene of interest in the vector control cells (using the  $\Delta\Delta C_T$  method). We were able to confirm that in OVCA429 cells ARID3A and ARID3B induced Twist, MYCN, MMP2, GLI2, TIMP3, and WNT5B. ARID3B, but not ARID3A, induced NES (Fig. 1). ARID3A, but not ARID3B, induced MYC (Fig. 1). In OVCA433 cells, ARID3A and ARID3B induced NES, MYCN, MMP2, GLI2, WNT5B, and SNAI2. In contrast to OVCA429 cells, TWIST was only induced by ARID3B. Like the OVCA429 cells, MYC was induced by ARID3A. We did not see an additive effect of ARID3A and ARID3B expression. One reason for this may be the way the cells were selected. For the RNA-seq experiment it took 2 rounds of FACSing to obtain enough cells that were both RFP+ and GFP+. We found that most cells preferred to express either ARID3A-GFP or ARID3B-RFP and they rarely would express both. Therefore, the cells used for validation may have had more of a mixed population than those used for RNA-seq. ARID3A/B induction of genes in Kuramochi cells varied somewhat from the OVCA429 and OVCA433 cells, suggesting that cellular context is important for the regulation of ARID3A/B target genes. MYC and NES were induced by ARID3A, ARID3B, and both proteins in Kuramochi cells (Fig. 1). Intriguingly, TIMP3 and MYCN were only induced by ARID3B. SNAI2 was only induced by ARID3A. Cellular context impacted ARID3A/B regulation of genes.

Next we determined if ARID3A and ARID3B could bind to promoter/enhancer regions of MYCN, TIMP3, NES, and GLI2. First, we identified ARID3A and ARID3B binding sites in the promoters (Fig. 2). Then we performed chromatin immunoprecipitation (ChIP) using protein-chromatin complexes isolated from OVCA429-GFP, OVCA429 ARID3A-GFP, and OVCA429 ARID3B-RFP cells (Fig. 3). We used antibodies for IgG (control IP), ARID3A, and ARID3B to immunoprecipitated protein-DNA complexes. After immunoprecipitating protein complexes, reversing crosslinks, and purifying DNA, qPCR was conducted for GAPDH (control), TIMP3, NES, GLI2, and MYCN promoter regions containing ARID3 consensus binding sites (Bobbs et al., 2015). Statistical (Student t test) comparisons are made between GFP control and ARID3A or ARID3B expressing cells. For MYCN we amplified two different promoter regions. One had a traditional ARID3A binding site and one had a more distinct ARID3B binding site as described (Bobbs et al., 2015). Of note, we

previously identified that ARID3B binds to TIMP3, NES, WNT5B, and MYC regulatory regions by ChIP followed by microarray (ChIP-CHIP) (Bobbs et al., 2015) in SKOV3IP cells. We now shown that ARID3A and ARID3B are able to bind ARID3 sites in MYCN, NES, and TIMP3 in OVCA429 cells. We did not detect binding of ARID3A or ARID3B to a binding site in GLI2 by ChIP or ChIP-CHIP (Bobbs et al., 2015). Therefore, GLI2 may be and indirect target of ARID3 regulation or more extensive ChIP studies need to be conducted to identify which binding sites are most relevant to GLI2 gene regulation.

We performed IPA analysis on the ARID3A/B regulated genes. The top 10 induced pathways are presented in Table 4. The top pathways identified were Axonal Guidance Signaling and Molecular Mechanisms of Cancer. Wnt/ $\beta$ -catenin Signaling and Human Embryonic Stem Cell Pluripotency Pathways were also found to be induced by the ARID3 family.

Some of the discrepancies between cell lines or between the RNA-seq and the validation studies may be due to the levels of ARID3A and ARID3B expression in cells. As we previously published, it is hard to maintain ARID3B levels in cells as the cells will induce TNF/TRAIL apoptosis. Interestingly, the cells that do survive long enough for us to make RNA and sequence, have reduced TNF/TRAIL pathways genes. TNFSF10, TNFRSF1B, TNFSF11B, TNFAIP2, and TNFAIP3 are all reduced in the cells used for RNA-seq (Table 5).

#### 4. Discussion

Our intent was to discover shared and unique target genes of ARID3A and ARID3B. Surprisingly we found that in ovarian cancer cells very few (13-23) genes were regulated uniquely by either ARID3A or ARID3B. In part this may be due to ARID3A and ARID3B inducing expression of each other. We did find that some genes were more induced when both ARID3A and ARID3B were co-expressed (Table 2). Additionally, in some cell lines ARID3A or ARID3B were better at regulating genes (Fig. 1). Therefore, there may be some selectivity in gene regulation by ARID3A and ARID3B that our study design did not identify.

We thought that ARID3A and ARID3B might have unique target genes because ARID3B induces cell death and ARID3A does not (Joseph et al., 2012; Pratama et al., 2015). Around seventy percent of cells with high ARID3B mRNA undergo TNF $\alpha$  induced cell death within 3 days of transduction with ARID3B lentivirus (Joseph et al., 2012). Moreover, we found that for cells overexpressing ARID3B to survive, the cells decrease expression of apoptosis promoting pathways (Table 5). Additionally, as cells adapt to high levels of ARID3B, more of the ARID3B becomes sequestered in the cytoplasm (Fig. 4A). This suggests that the net ARID3B levels available to regulate gene expression, may not be accurately reflected in RT-qPCR (Fig. 1). Importantly we found that in human ovarian tumors, ARID3B was nuclear when co-expressed with ARID3A (Roy and Cowden Dahl, 2018). Yet ARID3B was more diffuse when ARID3A was not present (Roy and Cowden Dahl, 2018). This suggests that subcellular localization of ARID3B in addition to localization of ARID3A may be important for target gene regulation *in vivo*.



In this study our goal was to analyze cells with moderately high expression of ARID3A and ARID3B that may reflect levels of ARID3B seen in ovarian cancer. Moderate, but not high levels of ARID3B correlate with increased relapse after chemotherapy in ovarian cancer (Roy et al., 2014). Additionally, we previously published that ARID3B induces cell death when overexpressed at high levels (Joseph et al., 2012). Importantly, ARID3A does promote apoptosis (Pratama et al., 2015). To further demonstrate that the levels of ARID3B are critical to target gene regulation, we transduced OVCA429 cells with ARID3B-GFP and then sorted for high and moderate expression of GFP. After 6 days, the cells selected for high ARID3B expression had a 25% higher expression of ARID3B than the cells selected for moderate expression (Fig. 4A). By day 12 there was no difference in expression of ARID3B (Fig. 4B). Additionally, cells expressing moderate ARID3B had a 6-fold increase in TNF and a 3-fold increase in pro-survival TNF receptor TNFRSF1B compared to parental cell lines. While cells with high ARID3B exhibited a 3-fold increase in proapoptotic TNFSF10 and RIPK. This data is relevant because it demonstrates that in order to see differences in gene regulation between ARID3A and ARID3B we will have to examine target gene expression with different doses of ARID3A and ARID3B and likely in different cell types. Since ARID3A does not induce cell death, apoptotic genes could be unique targets of ARID3B, that were not captured in our experimental design (due to having moderate and not high ARID3B expression). Additionally, ARID3A may regulate genes differently in different cell types such as trophoblast cells or B-cells. More studies will need to be conducted to identify differential target gene regulation by context. What this study was able to show is that moderate expression of ARID3A and ARID3B results in regulation of the same cohort of stem cell genes in ovarian cancer cell lines.

## 5. Conclusion

ARID3A and ARID3B proteins regulate cancer stem cell genes and may contribute to a stem cell phenotype.

## Supplementary Material

Refer to Web version on PubMed Central for supplementary material.

## Acknowledgements:

The authors would like Dr. Lynn Roy for reviewing statistical analysis. This publication was made possible, in part, with support from the Notre Dame Genomics and Bioinformatics Core Facility through Genomics Services utilizing Bioanalyzer analysis and Illumina Library Preparation. We specifically acknowledge the assistance of Jackie Lopez-Erickson. Fluorescence activated cell sorting (FACS) was conducted at the Indiana University School of Medicine-South Bend at the Imaging and Flow cytometry Core Facility by Dr. Charles Tessier.

**Funding:** This project was supported by the funds from the Enhanced Mentoring Program with Opportunities for Ways to Excel in Research (EMPOWER) at the Indiana University-Purdue University Indianapolis.

## Abbreviations:

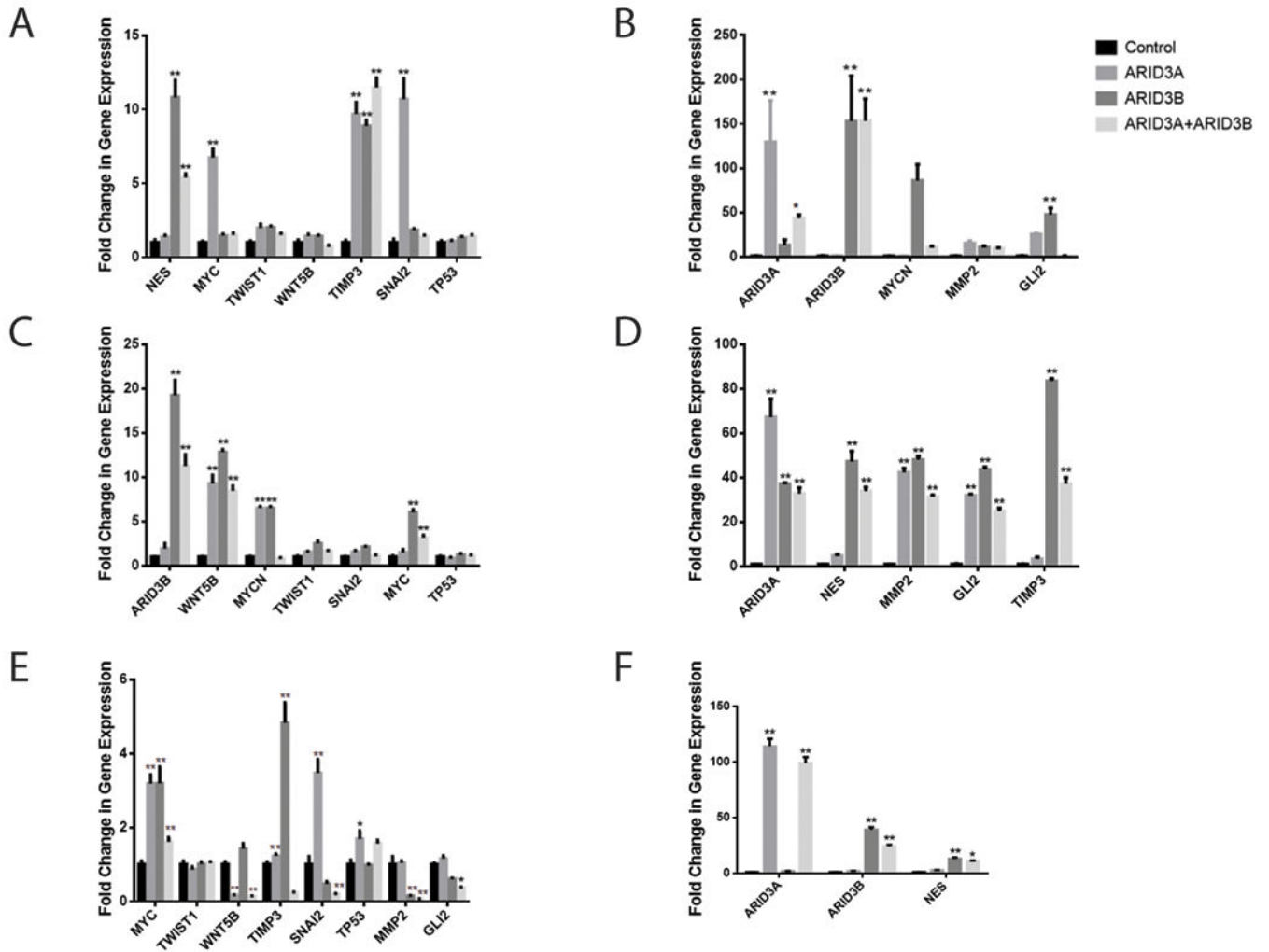
<b>ARID</b>	AT-Rich Interactive Domain
<b>GFP</b>	green fluorescent protein

<b>RFP</b>	red fluorescent protein
<b>RNA-seq</b>	ribonucleic acid sequencing
<b>RT-qPCR</b>	reverse transcribed quantitative polymerase chain reaction
<b>FACS</b>	fluorescence activated cell sorting
<b>ChIP</b>	Chromatin Immunoprecipitation

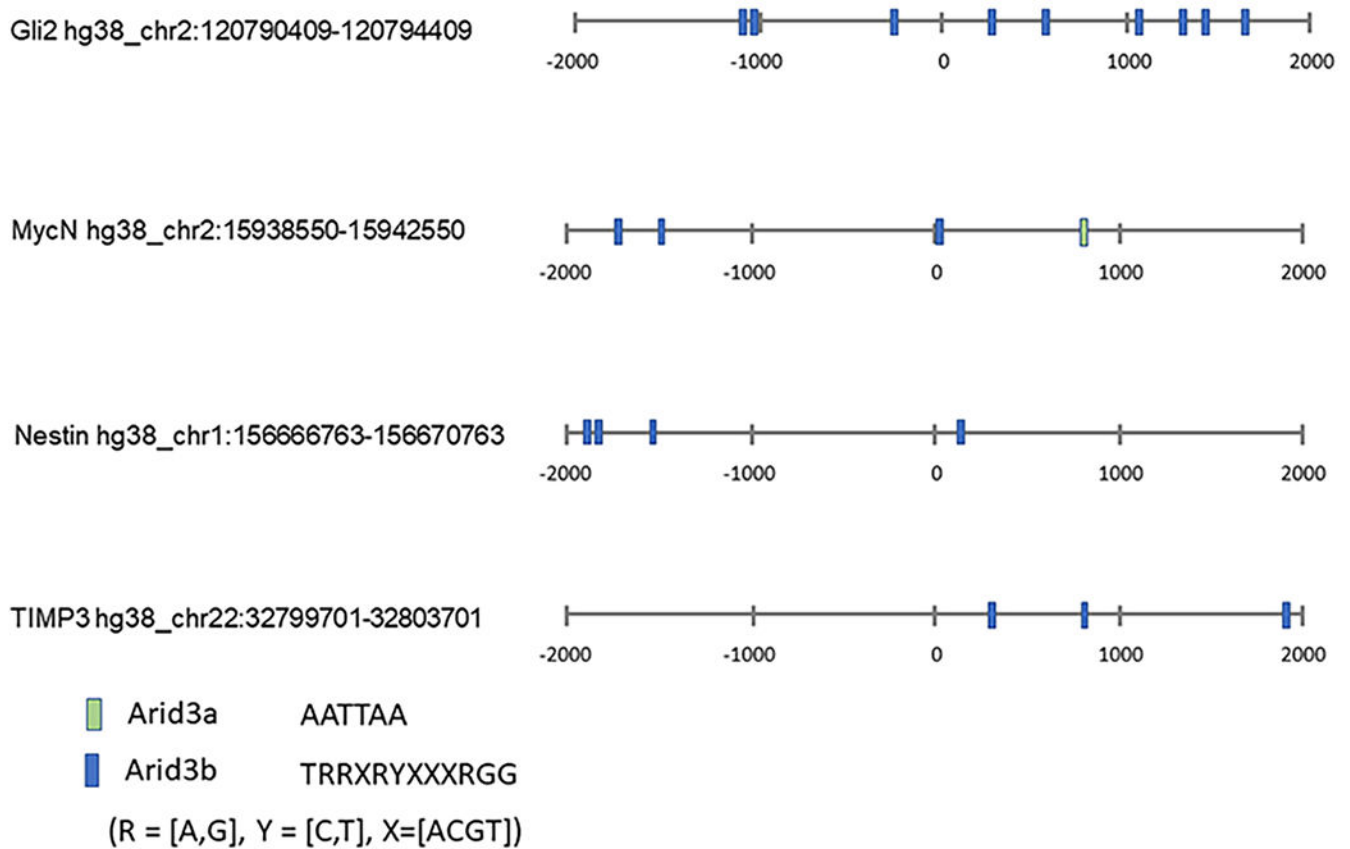
## References

- Bast RC Jr., Feeney M, Lazarus H, Nadler LM, Colvin RB and Knapp RC, 1981 Reactivity of a monoclonal antibody with human ovarian carcinoma. *J Clin Invest* 68, 1331–7. [PubMed: 7028788]
- Bobbs A, Gellerman K, Hallas WM, Joseph S, Yang C, Kurkewich J and Cowden Dahl KD, 2015 ARID3B Directly Regulates Ovarian Cancer Promoting Genes. *PLoS One* 10, e0131961. [PubMed: 26121572]
- Casanova JC, Uribe V, Badia-Careaga C, Giovinazzo G, Torres M and Sanz-Ezquerro JJ, 2011 Apical ectodermal ridge morphogenesis in limb development is controlled by Arid3b-mediated regulation of cell movements. *Development* 138, 1195–205. [PubMed: 21307092]
- Gregory SL, Kortschak RD, Kalionis B and Saint R, 1996 Characterization of the dead ringer gene identifies a novel, highly conserved family of sequence-specific DNA-binding proteins. *Mol Cell Biol* 16, 792–9. [PubMed: 8622680]
- Hamilton TC, Young RC, McKoy WM, Grotzinger KR, Green JA, Chu EW, Whang-Peng J, Rogan AM, Green WR and Ozols RF, 1983 Characterization of a human ovarian carcinoma cell line (NIH:OVCAR-3) with androgen and estrogen receptors. *Cancer Res* 43, 5379–89. [PubMed: 6604576]
- Herrscher RF, Kaplan MH, Lelsz DL, Das C, Scheuermann R and Tucker PW, 1995 The immunoglobulin heavy-chain matrix-associating regions are bound by Bright: a B cell-specific trans-activator that describes a new DNA-binding protein family. *Genes Dev* 9, 3067–82. [PubMed: 8543152]
- Joseph S, Deneke VE and Cowden Dahl KD, 2012 ARID3B Induces Tumor Necrosis Factor Alpha Mediated Apoptosis While a Novel ARID3B Splice Form Does Not Induce Cell Death. *PLoS One* 7, e42159. [PubMed: 22860069]
- Kim D, Probst L, Das C and Tucker PW, 2007a REKLES is an ARID3-restricted multifunctional domain. *J Biol Chem* 282, 15768–77. [PubMed: 17400556]
- Kim D, Probst L, Das C and Tucker PW, 2007b REKLES is an ARID3-restricted multifunctional domain. *The Journal of biological chemistry* 282, 15768–77. [PubMed: 17400556]
- Kobayashi K, Jakt LM and Nishikawa SI, 2012 Epigenetic regulation of the neuroblastoma genes, Arid3b and Mycn. *Oncogene*.
- Kurkewich JL, Klopfenstein N, Hallas WM, Wood C, Sattler RA, Das C, Tucker H, Dahl R and Cowden Dahl KD, 2016 Arid3b Is Critical for B Lymphocyte Development. *PLoS One* 11, e0161468. [PubMed: 27537840]
- Liao TT, Hsu WH, Ho CH, Hwang WL, Lan HY, Lo T, Chang CC, Tai SK and Yang MH, 2016 let-7 Modulates Chromatin Configuration and Target Gene Repression through Regulation of the ARID3B Complex. *Cell Rep* 14, 520–33. [PubMed: 26776511]
- Mitra AK, Davis DA, Tomar S, Roy L, Gurler H, Xie J, Lantvit DD, Cardenas H, Fang F, Liu Y, Loughran E, Yang J, Sharon Stack M, Emerson RE, Cowden Dahl KD, V.B M., Nephew KP, Matei D. and Burdette JE., 2015 In vivo tumor growth of high-grade serous ovarian cancer cell lines. *Gynecol Oncol* 138, 372–7. [PubMed: 26050922]
- Pratama E, Tian X, Lestari W, Iseki S, Ichwan SJ and Ikeda MA, 2015 Critical role of ARID3B in the expression of pro-apoptotic p53-target genes and apoptosis. *Biochem Biophys Res Commun* 468, 248–54. [PubMed: 26519881]

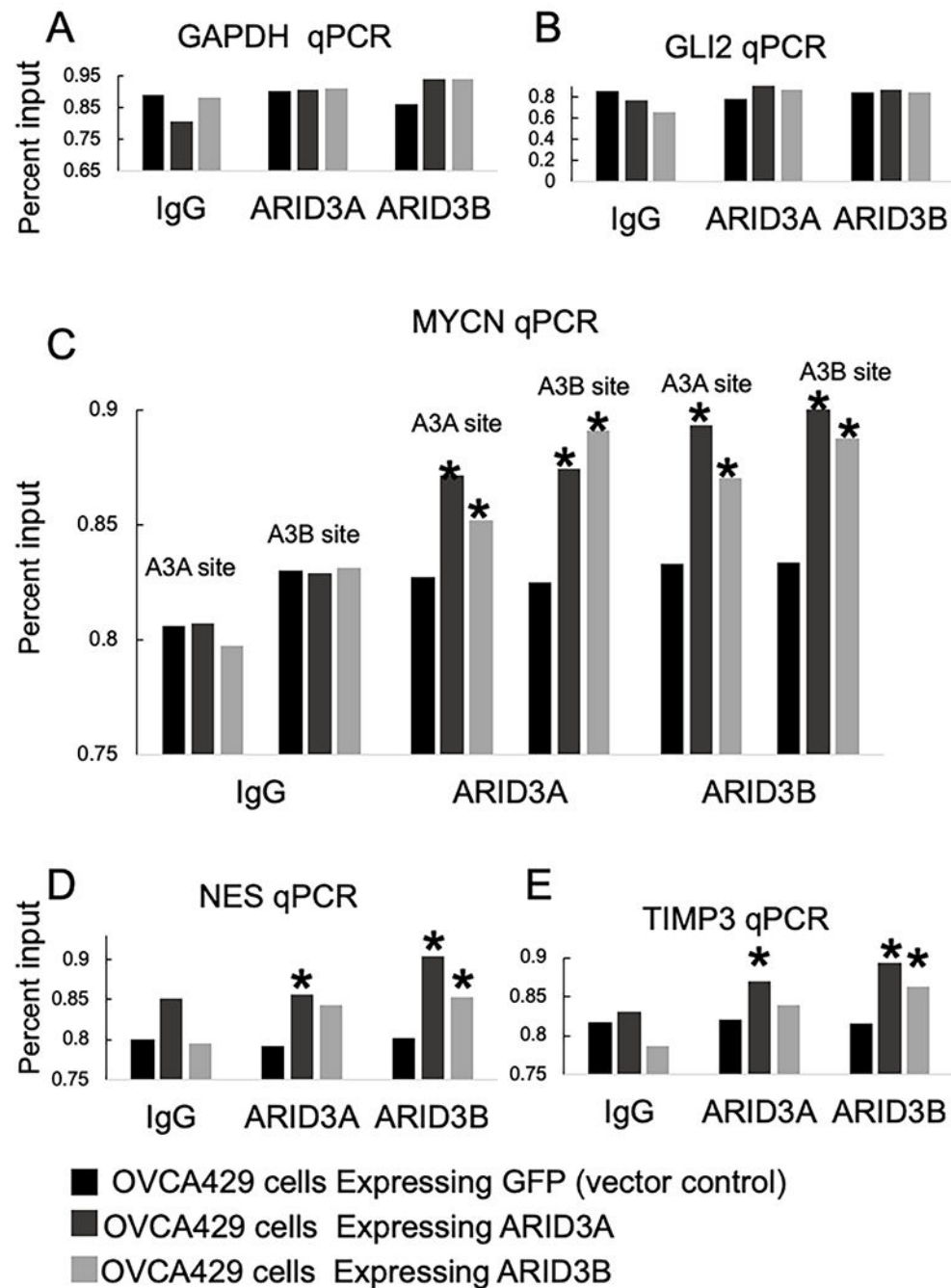
- Raney BJ, Cline MS, Rosenbloom KR, Dreszer TR, Learned K, Barber GP, Meyer LR, Sloan CA, Malladi VS, Roskin KM, Suh BB, Hinrichs AS, Clawson H, Zweig AS, Kirkup V, Fujita PA, Rhead B, Smith KE, Pohl A, Kuhn RM, Karolchik D, Haussler D and Kent WJ, 2011 ENCODE whole-genome data in the UCSC genome browser (2011 update). *Nucleic Acids Res* 39, D871–5. [PubMed: 21037257]
- Ratliff ML, Templeton TD, Ward JM and Webb CF, 2014 The Bright Side of Hematopoiesis: Regulatory Roles of ARID3a/Bright in Human and Mouse Hematopoiesis. *Front Immunol* 5, 113. [PubMed: 24678314]
- Rhee C, Edwards M, Dang C, Harris J, Brown M, Kim J and Tucker HO, 2017 ARID3A is required for mammalian placenta development. *Dev Biol* 422, 83–91. [PubMed: 27965054]
- Rhee C, Lee BK, Beck S, Anjum A, Cook KR, Popowski M, Tucker HO and Kim J, 2014 Arid3a is essential to execution of the first cell fate decision via direct embryonic and extraembryonic transcriptional regulation. *Genes Dev* 28, 2219–32. [PubMed: 25319825]
- Roy L, Bobbs A, Sattler R, Kurkewich JL, Dausinas PB, Nallathamby P and Cowden Dahl KD, 2018 CD133 Promotes Adhesion to the Ovarian Cancer Metastatic Niche. *Cancer Growth Metastasis* 11, 1179064418767882. [PubMed: 29662326]
- Roy L and Cowden Dahl KD, 2018 Can Stemness and Chemoresistance Be Therapeutically Targeted via Signaling Pathways in Ovarian Cancer? *Cancers (Basel)* 10.
- Roy L, Samyesudhas SJ, Carrasco M, Li J, Joseph S, Dahl R and Cowden Dahl KD, 2014 ARID3B increases ovarian tumor burden and is associated with a cancer stem cell gene signature. *Oncotarget* 5, 8355–66. [PubMed: 25327563]
- Samyesudhas SJ, Roy L and Cowden Dahl KD, 2014 Differential expression of ARID3B in normal adult tissue and carcinomas. *Gene* 543, 174–80. [PubMed: 24704276]
- Takebe A, Era T, Okada M, Martin Jakt L, Kuroda Y and Nishikawa S, 2006 Microarray analysis of PDGFR alpha+ populations in ES cell differentiation culture identifies genes involved in differentiation of mesoderm and mesenchyme including ARID3b that is essential for development of embryonic mesenchymal cells. *Dev Biol* 293, 25–37. [PubMed: 16530748]
- Tidwell JA, Schmidt C, Heaton P, Wilson V and Tucker PW, 2011 Characterization of a new ARID family transcription factor (Brightlike/ARID3C) that co-activates Bright/ARID3A-mediated immunoglobulin gene transcription. *Mol Immunol* 49, 260–72. [PubMed: 21955986]
- Wang J, Rao S, Chu J, Shen X, Levasseur DN, Theunissen TW and Orkin SH, 2006 A protein interaction network for pluripotency of embryonic stem cells. *Nature* 444, 364–8. [PubMed: 17093407]
- Webb CF, Bryant J, Popowski M, Allred L, Kim D, Harriss J, Schmidt C, Miner CA, Rose K, Cheng HL, Griffin C and Tucker PW, 2011 The ARID family transcription factor bright is required for both hematopoietic stem cell and B lineage development. *Mol Cell Biol* 31, 1041–53. [PubMed: 21199920]
- Wilsker D, Probst L, Wain HM, Maltais L, Tucker PW and Moran E, 2005 Nomenclature of the ARID family of DNA-binding proteins. *Genomics* 86, 242–51. [PubMed: 15922553]



**Figure 1:** Validation of RNA-seq data via RT-qPCR in three ovarian cancer cell lines. (A and B) Ovarian cancer cell line OVCA429 was lentivirally transduced with GFP, ARID3A, ARID3B or ARID3A + ARID3B. RT-qPCR was performed to verify fold change in ARID3A, ARID3B and ARID3A+ARID3B regulated genes. (C and D) Ovarian cancer cell line OVCA433 was lentivirally transduced with GFP, ARID3A, ARID3B, or ARID3A +ARID3B. RT-qPCR was performed for ARID3 regulated genes. (E and F) The ovarian cancer cell line Kuramochi was lentivirally transduced with GFP, ARID3A, ARID3B or ARID3A+ARID3B. RT-qPCR was performed for ARID3 regulated genes. Control was used to calculate relative expression over the endogenous expression of each gene of interest (control samples). Expression was normalized to GAPDH. Statistical (Student t test) comparisons are made between control and ARID3A or ARID3B expressing cells. \*P < 0.05, \*\*P < 0.001



**Figure 2:**  
 Identification of ARID3A and ARID3B binding sites in ARID3 regulated genes of interest. 2000 base pairs upstream and downstream of the transcription starts sites of the indicated genes were scanned for binding sites for Arid3a and Arid3b using DNA Pattern Find ([https://www.bioinformatics.org/sms2/dna\\_pattern.html](https://www.bioinformatics.org/sms2/dna_pattern.html)). Genomic sequences were downloaded from UCSC Genome Browser.



**Figure 3:** ARID3A and ARID3B bind gene regulatory regions. Chromatin immunoprecipitation (ChIP) followed by qPCR was performed on OVCA429 cells expressing GFP, ARID3A, or ARID3B. CHIP was conducted using antibodies for IgG (negative control), ARID3A, or ARID3B. All values are reported as a percent input of the amplification of input DNA. qPCR is conducted for (A) GAPDH (negative control), (B) GLI2, (C) MYCN (two sets of primers—one for an ARID3A specific site and one for an ARID3B specific site), (D) NES,



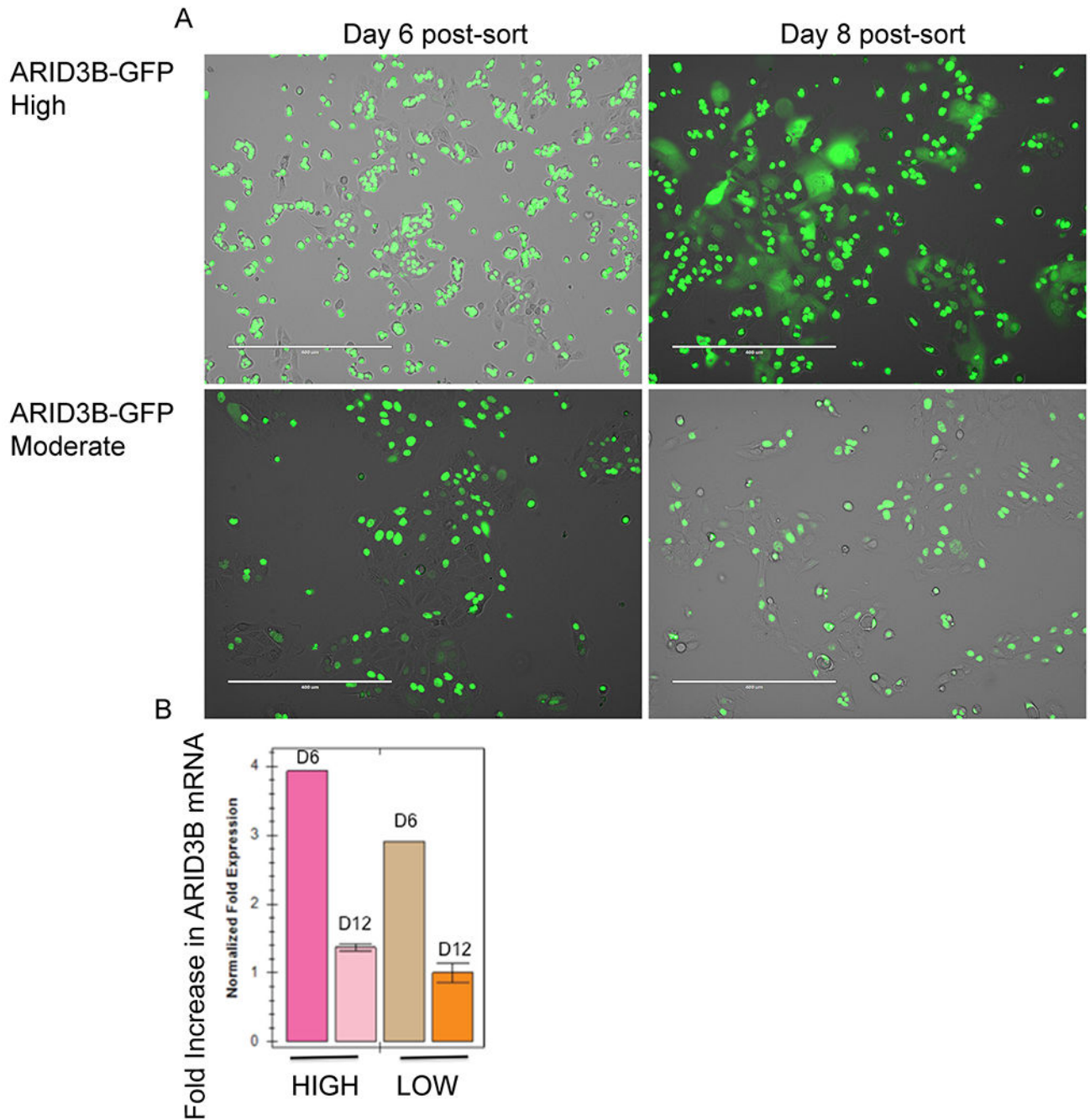
and (E) TIMP3. \*  $p < 0.05$  Statistical (Student t test) comparisons are made between GFP control and ARID3A or ARID3B expressing cells.

Author Manuscript

Author Manuscript

Author Manuscript

Author Manuscript



**Figure 4:** Ovarian cancer cells sorted for high and low expression of exogenous ARID3B. (A) OVCA429 cells were sorted for high or low expression of ARID3B-GFP. Fluorescence microscopy demonstrates localization of ARID3B 6- and 8-days post-sort. (B) RT-qPCR was conducted for ARID3B in OVCA429 cells sorted for high and low GFP after 6 and 12 days.

**Table 1:**

Genes induced by more than 3 fold by ARID3 proteins

ARID3A induced genes	log2 FC	p value	ARID3B induced genes	log2 FC2	p value3	ARID3A/B induced genes	log2 FC3	p value2
CCND2	8.320	8.33E-161	CCND2	8.962	5.818E-115	TIMP3	8.999	1.80E-51
TIMP3	8.092	1.35E-126	TIMP3	8.825	9.578E-88	GLI2	8.570	3.95E-37
GLI2	6.848	1.68E-74	GRB10	7.841	3.608E-61	CCND2	8.390	1.99E-46
GRB10	6.847	3.40E-76	GLI2	7.539	1.455E-49	GRB10	8.278	9.21E-36
ARID3A	6.658	0.00E+00	FAM155B	7.365	3.556E-65	BGN	7.956	1.24E-38
TNS1	6.351	2.98E-130	TNS1	7.138	9.825E-116	FAM155B	7.349	4.82E-28
FAM155B	6.350	2.12E-73	XYLT1	7.073	1.269E-41	XYLT1	7.230	1.49E-20
MMP2	6.126	2.19E-149	BGN	6.243	3.260E-37	TNS1	7.141	6.24E-52
VCAN	5.972	1.87E-95	UNC13A	6.216	1.189E-45	MMP2	7.050	1.10E-61
XYLT1	5.545	2.36E-41	MMP2	6.209	4.896E-118	UNC13A	6.856	1.26E-32
ALPPL2	5.540	1.71E-158	MT1E	6.116	8.096E-38	ARID3A	6.714	2.63E-97
MCF2L	5.472	1.44E-69	ARID3A	5.938	0.000E+00	TRPV3	6.512	1.92E-25
UNC13A	5.453	9.66E-52	NES	5.872	6.665E-140	MT1E	6.443	2.86E-19
BGN	5.369	3.61E-40	SLIT3	5.636	3.595E-48	SLIT3	6.357	4.86E-35
SPOCK1	5.303	4.32E-138	TRPV3	5.572	1.065E-29	CGA	6.111	3.39E-19
FGF13	5.275	2.91E-164	RUNDC3A	5.321	2.238E-35	RUNDC3A	6.028	1.58E-29
MT1E	5.241	3.37E-42	MCF2L	5.279	1.228E-39	MIR4697HG	5.982	4.88E-13
RUNDC3A	5.206	5.19E-60	CLSTN2	5.209	3.165E-45	MCF2L	5.897	1.40E-37
ALPP	5.088	0.00E+00	AOC1	5.130	3.784E-44	CELSR3	5.846	8.45E-50
SLIT3	5.069	4.79E-52	WNT5B	5.126	2.834E-61	IGSF9B	5.753	1.06E-11
TRPV3	5.021	9.84E-38	FABP5	5.069	1.226E-17	SAG	5.635	1.45E-11
NES	4.979	1.76E-205	CGA	5.047	5.258E-23	RORC	5.613	6.61E-19
SCARA3	4.844	5.35E-248	IGSF9B	5.032	2.354E-17	NES	5.404	1.06E-44
MAP1LC3C	4.842	5.29E-105	FGF13	5.001	6.051E-52	SARDH	5.403	2.06E-20
CELSR3	4.814	4.11E-78	SARDH	4.984	1.392E-28	ZNF469	5.402	1.12E-13
FLI1	4.803	9.10E-73	CELSR3	4.963	1.093E-56	CKMT1B	5.393	4.75E-15
SEMA5A	4.801	4.87E-62	SPOCK1	4.943	7.364E-34	ACKR3	5.355	7.22E-12
KRT17	4.772	2.17E-75	SCN2B	4.918	2.698E-16	NOS3	5.300	1.77E-34
CGA	4.698	2.31E-29	ACKR3	4.918	5.201E-18	KRT17	5.288	4.86E-46
FAT3	4.640	2.03E-51	SH3RF3	4.893	2.621E-53	ALOX15	5.275	6.71E-33
SFMBT2	4.566	7.29E-29	SFMBT2	4.859	1.492E-20	IGDCC3	5.262	8.57E-21
CLSTN2	4.538	6.34E-60	SYT17	4.843	4.002E-19	SYT17	5.200	1.75E-12
LOC101929331	4.478	6.60E-57	ALPPL2	4.842	7.708E-68	PHF21B	5.191	4.89E-12
ALOX15	4.434	1.70E-48	FLI1	4.833	2.432E-53	LOC101929331	5.180	1.10E-40
WNT5B	4.412	1.26E-55	SCARA3	4.829	1.886E-75	SFMBT2	5.162	6.77E-13
ACOXL	4.387	1.23E-39	ANK1	4.822	5.627E-38	PDCD1	5.152	1.14E-12

ARID3A induced genes	log2 FC	p value	ARID3B induced genes	log2 FC2	p value3	ARID3A/B induced genes	log2 FC3	p value2
KCNH7	4.338	4.42E-51	NGFR	4.791	2.882E-28	ASIC2	5.119	1.91E-18
HEPH	4.317	9.84E-22	KRT17	4.782	2.012E-40	SPOCK1	5.081	7.97E-38
SDPR	4.315	1.12E-122	C15orf48	4.747	3.059E-23	TMIGD2	4.995	2.11E-08
NRXN3	4.305	2.14E-27	MIR4697HG	4.726	1.310E-14	WNT5B	4.992	2.75E-23
PAPPA	4.301	5.15E-79	NOS3	4.722	1.199E-50	MAP1LC3C	4.978	1.45E-34
SCG2	4.291	2.28E-58	SCNN1G	4.708	1.368E-20	SCARA3	4.969	6.91E-57
SH3RF3	4.256	1.18E-51	ZNF469	4.668	4.526E-16	SH3RF3	4.964	1.17E-21
ANK1	4.233	1.12E-91	ALPP	4.663	1.804E-169	MEIS3	4.949	1.06E-16
MGP	4.211	1.12E-54	ALOX15	4.640	1.308E-37	ALPPL2	4.937	7.71E-24
AOC1	4.200	1.45E-40	LOC101929331	4.620	2.218E-44	ANK1	4.928	1.40E-20
RNF175	4.194	4.13E-42	MAP1LC3C	4.590	3.499E-59	CKMT1A	4.914	1.04E-15
MEIS3	4.126	3.60E-25	RNF175	4.574	3.731E-36	ZCCHC18	4.905	3.64E-08
SARDH	4.122	3.06E-27	CKMT1B	4.544	4.147E-17	FGF13	4.855	7.07E-24
RORC	4.068	1.46E-21	ASIC2	4.471	3.180E-26	GSTO2	4.811	2.07E-20
LRRC17	4.062	1.28E-35	MEIS3	4.437	1.714E-19	FABP5	4.809	8.44E-08
MIR4697HG	4.036	1.83E-18	CKMT1A	4.426	2.900E-21	CLSTN2	4.796	2.33E-33
SPOCK2	4.024	7.87E-291	LHX6	4.390	1.059E-106	AP3B2	4.751	4.07E-09
C15orf48	4.015	3.59E-24	HEPH	4.389	2.496E-12	CHGA	4.654	2.19E-09
ZNF469	4.007	5.34E-19	ACOXL	4.387	2.131E-27	FOXS1	4.649	1.28E-08
CKMT1B	4.007	2.90E-21	RORC	4.354	4.530E-18	AR	4.607	1.89E-07
IGDCC3	4.001	3.79E-24	APCDD1L-AS1	4.335	2.147E-33	ACOXL	4.605	3.63E-22
GSTO2	3.978	6.35E-35	PRSS3P2	4.332	9.934E-12	HIF3A	4.565	1.17E-35
OSR2	3.968	0.00E+00	VCAN	4.306	2.188E-18	ALPP	4.552	9.38E-50
PAPPA-AS1	3.963	3.03E-24	SCG2	4.260	9.455E-39	AOC1	4.469	9.56E-19
HIF3A	3.957	6.56E-35	GSTO2	4.240	3.845E-24	SYBU	4.458	7.96E-14
CKMT1A	3.863	2.98E-24	ZCCHC18	4.211	3.506E-11	RNF175	4.441	3.23E-24
RGMA	3.851	7.01E-39	CDH16	4.199	2.223E-13	ONECUT3	4.412	8.14E-20
MFSD7	3.786	2.70E-45	PHF21B	4.161	4.024E-13	CALY	4.341	2.49E-08
ELAVL2	3.745	5.81E-122	NOG	4.119	5.898E-63	LINC00885	4.327	3.90E-07
EYA1	3.745	4.73E-67	SULF2	4.117	7.327E-14	MFSD7	4.310	4.14E-24
DEPDC7	3.736	3.50E-41	MFSD7	4.080	1.306E-40	DGCR5	4.304	1.62E-06
IGSF9B	3.727	2.43E-15	NRXN3	4.071	2.845E-14	C15orf48	4.281	3.31E-11
APCDD1L-AS1	3.716	1.18E-32	PRSS2	4.049	4.464E-10	TGM4	4.281	5.09E-17
SYT17	3.698	1.63E-16	MYCN	4.043	9.632E-58	SCNN1G	4.273	1.33E-07
CACNG4	3.645	2.43E-51	LRRC17	4.043	6.739E-25	FAM178B	4.273	3.57E-18
NOS3	3.633	4.83E-25	SH3RF3-AS1	4.008	1.731E-26	BCL11A	4.268	3.27E-10
PEG10	3.626	9.57E-59	TGM4	4.004	9.888E-21	FLI1	4.252	6.19E-19
FLRT2	3.621	3.05E-70	CSF2RB	3.996	1.314E-11	OSR2	4.201	9.93E-56
NDN	3.606	1.31E-105	RGMA	3.948	8.112E-34	TMEM145	4.189	2.45E-13

ARID3A induced genes	log2 FC	p value	ARID3B induced genes	log2 FC2	p value3	ARID3A/B induced genes	log2 FC3	p value2
WNT6	3.583	3.39E-37	MN1	3.912	6.927E-21	MGP	4.189	2.75E-12
PRSS23	3.581	3.57E-156	TMC5	3.909	4.657E-14	HRK	4.178	7.33E-08
LHX6	3.551	1.14E-82	BCL11A	3.903	2.867E-16	EPDR1	4.158	8.10E-08
FIBCD1	3.547	9.67E-87	PAPPA	3.868	1.050E-19	APCDD1L-AS1	4.153	1.07E-16
ASIC2	3.544	9.59E-19	OSR2	3.852	2.266E-122	LOC283070	4.140	5.26E-13
PHF21B	3.520	2.39E-14	GDNF-AS1	3.846	6.117E-09	CACNG4	4.104	8.28E-38
CTGF	3.518	6.91E-120	VEGF	3.825	1.817E-112	RGMA	4.102	3.28E-19
FABP5	3.503	4.14E-13	DTNA	3.801	1.581E-10	SH3RF3-AS1	4.052	1.06E-12
LSAMP-AS1	3.502	7.13E-15	MGP	3.790	1.430E-26	OASL	4.004	5.39E-27
ONECUT3	3.477	2.55E-29	AR	3.785	1.983E-09	PRODH	3.936	1.64E-06
RYR2	3.474	1.24E-32	CACNG4	3.784	1.100E-52	VEGF	3.897	1.72E-16
LOC283070	3.474	1.74E-18	HIF3A	3.772	2.970E-34	C5AR1	3.885	1.10E-06
ACKR3	3.459	1.88E-13	NDN	3.769	2.845E-42	FIBCD1	3.880	1.94E-35
RTN4RL1	3.451	4.92E-24	CSF1R	3.756	5.981E-80	NDN	3.862	5.04E-26
AR	3.429	3.46E-13	LSAMP-AS1	3.749	8.379E-11	NRXN3	3.839	1.68E-05
LINC00889	3.418	1.82E-16	SDPR	3.745	2.704E-44	LHX6	3.838	2.26E-24
OASL	3.394	9.09E-102	SPOCK2	3.716	1.564E-91	TMEM240	3.821	1.68E-08
SH3RF3-AS1	3.379	5.93E-23	RPP25	3.697	4.118E-57	NEURL1	3.786	2.71E-30
FBN1	3.364	2.92E-75	NEURL1	3.693	1.914E-165	RPP25	3.779	1.67E-17
NEURL1	3.358	1.94E-206	CTGF	3.682	1.180E-61	DTNA	3.741	2.42E-05
NEBL	3.355	1.57E-44	SYBU	3.681	8.361E-14	RTN4RL1	3.733	1.09E-15
PRSS3P2	3.350	4.87E-12	ADRA1B	3.678	4.239E-50	SYT5	3.689	3.16E-10
SCNN1G	3.343	5.54E-14	LOC283070	3.661	2.038E-14	CSF1R	3.686	2.43E-18
GFRA1	3.338	1.08E-159	PDCD1	3.656	1.702E-09	LSAMP-AS1	3.681	5.66E-05
BCL11A	3.322	6.15E-19	IGDCC3	3.655	2.351E-13	INHBE	3.668	2.87E-07
TGM4	3.309	4.25E-18	FAM178B	3.621	3.939E-17	CTGF	3.655	3.19E-40
TP53I11	3.308	5.60E-65	TNS4	3.607	9.411E-26	SPOCK2	3.652	1.83E-63
TMEM145	3.300	6.54E-19	LARGE	3.573	2.130E-52	PLIN5	3.639	2.75E-06
DTNA	3.299	8.82E-14	TMEM145	3.528	1.460E-16	LARGE	3.620	1.23E-18
MYCN	3.270	1.07E-48	GPR17	3.473	2.191E-11	ADRA1B	3.598	2.02E-14
LARGE	3.269	1.46E-61	KRTAP2-3	3.464	5.371E-26	TMC5	3.595	2.57E-07
SHC3	3.234	4.05E-167	ADAMTS17	3.456	3.043E-17	TMEM158	3.566	2.11E-43
SCN8A	3.229	2.44E-54	PRSS23	3.455	4.180E-104	HES7	3.561	1.68E-07
TMEM158	3.224	2.26E-92	FBLL1	3.444	3.908E-08	S100A4	3.560	6.67E-70
ADRA1B	3.221	6.93E-67	ONECUT3	3.443	2.465E-19	SCAMP5	3.536	1.69E-21
VEGF	3.192	9.89E-107	PAPPA-AS1	3.428	9.642E-09	NDRG4	3.523	1.03E-40
ZCCHC18	3.191	1.27E-12	MUC16	3.419	8.153E-12	CAPN8	3.509	1.89E-17
NOG	3.176	2.07E-136	TP53I11	3.419	7.542E-76	TMEM105	3.501	3.23E-20
RARB	3.138	1.33E-34	CLU	3.404	1.047E-64	DHH	3.492	6.43E-05

ARID3A induced genes	log2 FC	p value	ARID3B induced genes	log2 FC2	p value3	ARID3A/B induced genes	log2 FC3	p value2
PRSS2	3.122	2.45E-10	DENND2A	3.401	6.525E-63	TP53I11	3.483	2.37E-34
NTRK2	3.111	7.41E-38	SEMA5A	3.392	4.693E-14	DENND2A	3.481	5.68E-27
LOC100506178	3.110	2.01E-80	VIM-AS1	3.373	9.451E-48	FXYD1	3.479	1.01E-09
CLU	3.106	4.04E-47	CACNA2D4	3.369	2.961E-14	OGDHL	3.472	2.05E-18
PRODH	3.078	1.23E-10	FIBCD1	3.357	3.927E-43	CHST4	3.467	1.07E-06
ACE	3.060	2.06E-21	HSD11B1	3.355	1.988E-17	SLC47A2	3.411	1.19E-14
RPP25	3.054	5.36E-49	SHC3	3.346	6.048E-128	HCAR1	3.371	2.29E-20
DGCR5	3.033	4.70E-10	TMEM158	3.344	3.098E-71	MYCN	3.371	5.37E-17
ACHE	3.030	3.01E-46	EPDR1	3.338	3.065E-08	AGAP2	3.370	3.76E-20
AP3B2	3.024	5.12E-10	HCAR1	3.336	1.903E-54	PAPPA	3.364	2.30E-08
TMC5	3.024	1.08E-11	WNT6	3.333	2.409E-27	ADSSL1	3.361	3.78E-17
S100A4	3.012	0.00E+00	KCNH7	3.319	5.377E-14	FAM71D	3.354	5.73E-07
ADSSL1	3.010	9.60E-32	VIM	3.310	5.432E-53	LHB	3.349	2.08E-05
ABAT	3.001	1.26E-42	OGDHL	3.308	1.790E-24	P2RX5	3.339	1.09E-12
CSF1R	2.987	1.30E-64	P2RX5	3.303	1.434E-58	PPFIBP2	3.335	6.70E-12
SYBU	2.985	2.49E-12	S100A4	3.287	2.551E-37	FAM115C	3.329	6.43E-12
IL7R	2.985	5.10E-27	SBK2	3.259	4.190E-07	NOG	3.325	4.70E-18
NDRG4	2.977	2.03E-108	DHH	3.257	6.933E-08	CECR6	3.301	2.16E-16
PDCD1	2.972	5.13E-10	GDNF	3.249	1.231E-29	CACNA2D4	3.298	2.17E-06
HCAR1	2.958	1.19E-51	EYA1	3.232	1.115E-21	GPR17	3.298	2.27E-05
LINC01468	2.947	1.83E-77	TRIM29	3.224	6.595E-11	ELFN1	3.289	2.02E-05
TENM1	2.943	4.90E-09	SCAMP5	3.209	9.157E-49	DYSF	3.285	8.82E-33
EPDR1	2.931	3.73E-10	OASL	3.197	5.015E-28	PRSS23	3.282	1.88E-14
DENND2A	2.917	6.07E-128	ADSSL1	3.190	3.455E-22	GDF15	3.256	1.36E-54
TMEM105	2.899	7.00E-28	NTRK2	3.159	4.005E-16	ACE	3.248	9.27E-19
SCAMP5	2.896	9.71E-86	GFRA1	3.144	6.656E-45	IGFBP3	3.242	1.11E-47
IGFBP3	2.895	0.00E+00	APLN	3.135	6.880E-09	PAPPA-AS1	3.230	0.000158502
ENOX1	2.889	6.08E-23	ARID3B	3.134	1.105E-107	LGALS7B	3.226	5.87E-14
OGDHL	2.874	2.45E-27	CRB2	3.127	2.663E-19	CPLX1	3.225	2.66E-11
CCL5	2.869	2.55E-44	TMEM105	3.116	3.330E-24	NOX5	3.219	1.93E-08
SULF2	2.864	1.46E-09	APCDD1L	3.086	4.203E-58	KRTAP2-3	3.215	1.07E-08
GUCY1A3	2.853	1.12E-65	DYSF	3.085	1.026E-48	VIM-AS1	3.210	1.22E-15
PLCE1	2.850	3.35E-76	LURAP1	3.081	1.266E-09	NUPR1	3.202	2.85E-13
KIAA1549L	2.815	9.82E-66	GGT5	3.056	2.921E-10	SHC3	3.168	3.21E-52
FBLL1	2.811	7.40E-09	SYT5	3.042	1.505E-09	ACOX2	3.165	1.03E-05
ASS1	2.808	1.18E-134	ACHE	3.032	1.988E-36	VIM	3.163	3.03E-17
FAM178B	2.796	8.35E-12	FSCN1	3.031	2.770E-69	ACHE	3.154	1.85E-23
PRR16	2.779	2.59E-43	NOX5	3.014	2.038E-13	TNIK	3.152	9.05E-09



ARID3A induced genes	log2 FC	p value	ARID3B induced genes	log2 FC2	p value3	ARID3A/B induced genes	log2 FC3	p value2
TNIK	2.777	1.33E-70	CAPN8	3.013	3.281E-16	WNT6	3.133	3.91E-12
ACSS1	2.750	4.75E-15	RTN4RL1	3.002	1.897E-12	NAT16	3.128	5.26E-05
TMEM45A	2.749	2.43E-163	LOC100506178	2.997	2.679E-48	CD22	3.127	3.10E-11
DYSF	2.746	8.57E-100	HECW1	2.994	1.001E-19	GDNF	3.126	5.25E-13
UST	2.738	2.32E-43	UNC5A	2.988	6.403E-07	MUC16	3.124	3.97E-17
ABI3BP	2.733	1.29E-24	TRIB1	2.976	1.763E-65	SCG2	3.120	8.78E-05
VIM-AS1	2.723	1.37E-107	AGAP2	2.975	2.206E-51	CLU	3.099	1.47E-25
P2RX5	2.721	1.25E-55	KIAA1549L	2.973	3.950E-21	CAMK1D	3.095	3.66E-08
FSCN1	2.716	1.29E-128	UST	2.970	1.595E-23	HECW1	3.088	2.95E-13
SNAP25	2.704	4.07E-08	CPLX1	2.968	8.179E-23	RENBP	3.077	4.50E-07
FAM115C	2.701	7.77E-16	NDRG4	2.968	5.101E-50	WIPF3	3.075	6.06E-14
FGF11	2.698	5.25E-25	RARB	2.955	8.203E-18	ACSS1	3.057	3.84E-10
CECR6	2.685	2.28E-15	FAT3	2.953	3.162E-07	CCL5	3.042	1.98E-18
HOTAIR	2.684	3.10E-11	TNIK	2.946	1.846E-11	LOC440028	3.034	6.81E-08
VIM	2.675	1.79E-185	FAM115C	2.917	7.447E-15	MN1	3.028	1.30E-09
AGAP2	2.666	3.29E-123	TMEM240	2.880	6.420E-07	KCNAB3	3.025	3.91E-07
MUC16	2.658	4.33E-09	TNNC1	2.873	9.544E-23	ANKRD24	3.024	1.03E-15
ITGB6	2.655	1.21E-61	LOC440028	2.871	5.958E-09	GPC4	3.019	2.95E-38
TMEM130	2.652	2.16E-82	LINC00889	2.870	4.576E-06	BSN	3.010	2.43E-15
HRK	2.648	4.39E-08	GDF15	2.869	2.026E-38	TRIB1	2.979	7.68E-22
HECW1	2.633	9.13E-18	GYPC	2.865	7.169E-27	FGF11	2.976	2.75E-14
LOC101929680	2.633	7.27E-30	HRK	2.853	1.828E-05	ATOH8	2.967	2.20E-09
LOC440028	2.631	1.37E-11	IFI27	2.833	1.748E-09	FSCN1	2.965	7.94E-20
CPNE4	2.630	1.97E-52	CHST4	2.826	1.444E-06	MAPK8IP2	2.958	5.01E-13
SLC47A2	2.628	1.34E-15	KCNMA1	2.817	5.679E-47	LURAP1	2.946	5.27E-06
C5AR1	2.610	8.31E-08	DEPDC7	2.816	4.467E-12	UST	2.936	3.53E-23
TRIB1	2.605	2.61E-93	CECR6	2.811	5.911E-16	CHRM4	2.933	1.43E-06
HMCN1	2.605	2.39E-36	CPNE4	2.810	2.015E-41	ANKRD13B	2.922	7.73E-17
CD180	2.605	4.74E-08	NHSL2	2.807	1.807E-10	NTN1	2.892	9.01E-18
PLIN5	2.595	6.40E-08	MFNG	2.803	4.281E-15	GFRA1	2.888	5.42E-28
CACNA2D4	2.595	8.69E-11	CHRM4	2.794	1.248E-11	ASS1	2.887	5.16E-47
PTGER4	2.592	1.70E-70	FGF11	2.792	1.014E-22	LOC100506178	2.883	1.01E-19
SBF2-AS1	2.584	2.30E-55	CDSN	2.781	8.496E-14	SPTBN4	2.881	5.97E-08
GYPC	2.581	8.34E-93	SCN8A	2.781	1.998E-11	ZFYVE28	2.880	1.37E-08
GPC4	2.580	5.11E-62	ACE	2.778	2.317E-17	INPP5D	2.876	1.08E-07
TMEM2	2.577	4.02E-219	FAM83A	2.768	1.446E-40	STAC3	2.871	2.08E-15
COL4A5	2.573	4.16E-176	ELAVL2	2.762	2.465E-19	STMN3	2.862	5.00E-10
ARMCX4	2.570	3.18E-15	WIPF3	2.754	3.531E-30	SDPR	2.852	8.42E-05
TNNC1	2.566	2.57E-64	PEG10	2.744	1.656E-12	COL4A2-AS1	2.838	4.82E-10

ARID3A induced genes	log2 FC	p value	ARID3B induced genes	log2 FC2	p value3	ARID3A/B induced genes	log2 FC3	p value2
APCDD1L	2.563	2.70E-49	LGALS7B	2.732	2.112E-09	LYPD3	2.830	8.21E-32
GDF15	2.554	2.12E-13	KPNA7	2.728	7.736E-07	HSPA2	2.822	4.37E-06
CHRM4	2.549	8.73E-12	ANKRD24	2.728	4.668E-30	LMCD1	2.816	1.16E-11
LURAP1	2.543	7.22E-09	ABAT	2.723	3.789E-27	CPNE4	2.815	7.86E-26
GDNF	2.542	1.27E-20	ACSS1	2.713	1.840E-10	KIAA1549L	2.810	1.50E-34
MN1	2.539	2.92E-10	TRPV4	2.704	4.792E-44	CRIP1	2.808	2.71E-07
CAMK1D	2.527	6.05E-12	ST3GAL1	2.696	4.022E-51	TH	2.807	3.12E-07
ELFN1	2.506	2.82E-08	LMCD1	2.689	1.032E-26	TMEM63C	2.802	9.71E-17
CAPN8	2.505	3.63E-13	SLC47A2	2.678	3.305E-13	KPNA7	2.800	0.00045 3299
FZD4	2.499	6.80E-79	SBSN	2.674	7.606E-09	COL17A1	2.787	1.22E-13
NUPR1	2.498	2.16E-11	NTN1	2.674	5.398E-102	EYA1	2.786	5.74E-05
LGALS7B	2.473	7.72E-13	PRSS1	2.672	7.233E-08	ZG16B	2.781	2.19E-07
MAPK8IP2	2.470	7.25E-19	CCL5	2.672	7.989E-17	EHD2	2.780	1.00E-20
TMEM240	2.456	3.52E-07	INHBE	2.670	1.080E-06	MAPT	2.778	8.35E-06
LINC01279	2.445	5.96E-61	MAPK8IP2	2.659	2.571E-17	TNNC1	2.752	7.62E-30
RSAD2	2.444	4.89E-77	PPARGC1B	2.657	3.947E-24	TRPV4	2.751	2.41E-11
EPHB6	2.437	2.88E-51	CAMK1D	2.649	3.417E-13	CTB-113P19.1	2.751	0.00028 7867
TRPV4	2.436	4.23E-56	RYR2	2.647	6.508E-07	KCND1	2.742	2.43E-14
NHSL2	2.431	1.44E-13	IGFBP3	2.620	1.547E-35	RCOR2	2.735	4.37E-07
CPLX1	2.422	1.08E-15	FLRT2	2.609	2.888E-10	GYPC	2.722	1.16E-16
LYPD3	2.422	1.67E-183	ANKRD13B	2.608	2.663E-57	ASAP3	2.711	1.73E-34
FXYD1	2.418	1.16E-08	GPC4	2.606	8.631E-49	APCDD1L	2.693	1.56E-10
COL5A1	2.416	7.04E-129	STMN3	2.602	6.829E-27	ADAMTS17	2.676	3.02E-06
LINC00482	2.416	3.84E-07	ATG9B	2.590	1.297E-21	SLC22A20	2.659	3.28E-07
SYT5	2.387	1.06E-07	FXYD1	2.588	2.129E-07	CDC42EP5	2.657	1.40E-22
ASAP3	2.381	5.82E-75	GOLGA7B	2.575	4.507E-12	CALHM3	2.656	8.14E-14
PNMA2	2.375	8.72E-66	BSN	2.575	1.968E-11	THBS3	2.656	1.22E-22
CNKSR3	2.368	3.76E-35	ZG16B	2.573	2.474E-09	LIMS2	2.643	6.75E-06
STAC3	2.362	3.58E-14	EPHB6	2.545	1.587E-34	COL5A1	2.622	7.28E-32
CRIP1	2.360	4.39E-09	ELFN1	2.541	1.595E-05	TMEM130	2.621	3.06E-34
NTN1	2.356	1.37E-137	ENOX1	2.541	2.343E-10	BCAN	2.615	3.34E-11
ANKRD24	2.350	7.82E-27	DPF3	2.540	2.121E-09	HOTAIR	2.613	3.94E-05
NOX5	2.334	1.62E-10	LINC01315	2.539	5.085E-07	MFNG	2.610	5.34E-09
SLC9A7P1	2.332	1.29E-08	CALHM3	2.537	2.559E-21	PRR16	2.602	7.53E-10
FAM71D	2.331	1.11E-07	KCNAB3	2.518	1.847E-06	PTGER4	2.598	1.60E-14
KRTAP2-3	2.320	2.01E-12	LOC284344	2.518	6.099E-06	RHBDL1	2.596	1.57E-08
TRPC4	2.320	6.47E-20	NCF2	2.514	1.086E-21	VSIG10L	2.595	1.33E-14
STEAP4	2.319	6.23E-21	HMOX1	2.512	4.407E-24	C2CD4C	2.586	1.49E-13

ARID3A induced genes	log2 FC	p value	ARID3B induced genes	log2 FC2	p value3	ARID3A/B induced genes	log2 FC3	p value2
INHBA	2.307	4.32E-107	LIMS2	2.508	2.901E-09	PDZD7	2.584	1.69E-07
STXBP6	2.301	1.44E-37	SPHK1	2.499	8.315E-36	AQP3	2.578	8.76E-33
WIPF3	2.300	5.89E-28	ASS1	2.482	7.836E-21	APOE	2.544	1.16E-23
CASC10	2.300	1.74E-71	COL17A1	2.480	2.972E-49	P2RX2	2.542	0.00024 3848
INPP5D	2.296	6.85E-08	NCR3LG1	2.476	3.426E-20	FLRT2	2.541	0.00292 8445
LOC284344	2.293	6.78E-07	PNMA2	2.453	2.923E-44	CNKSR3	2.527	4.47E-24
TNFSF15	2.290	2.74E-30	TMEM130	2.444	6.396E-43	SEZ6L2	2.526	5.01E-18
IFITM1	2.288	2.58E-30	FBN1	2.438	3.071E-13	KCNH7	2.522	0.01067 5877
BSN	2.276	7.56E-15	LOC102724094	2.437	3.138E-06	WTIP	2.517	4.11E-14
EPST11	2.262	1.05E-88	BCAN	2.426	4.121E-42	SLC23A3	2.515	0.00023 9171
LOC101927151	2.261	1.68E-33	TBC1D30	2.424	2.893E-28	FAT3	2.507	0.01535 6083
ANKRD13B	2.254	5.96E-58	STAC3	2.421	7.111E-12	PPARGC1B	2.501	1.28E-12
AQP3	2.253	4.89E-44	G0S2	2.415	1.199E-21	MIR4709	2.496	0.00170 4675
UNC5A	2.251	5.07E-06	INPP5D	2.403	5.552E-07	FZD8	2.493	2.93E-06
HES7	2.226	2.24E-06	WNT4	2.401	7.704E-10	AIFM3	2.484	1.98E-05
MFNG	2.220	2.11E-11	SLC25A53	2.398	1.325E-09	KCNC3	2.484	8.43E-15
INHBE	2.215	7.46E-06	TMEM63C	2.397	5.329E-28	SPHK1	2.472	1.85E-06
SNTB1	2.203	1.68E-09	CORO6	2.393	5.623E-23	ATF3	2.458	8.48E-15
PRSS1	2.203	4.76E-08	CTB-113P19.1	2.388	1.196E-05	NCF2	2.448	2.33E-08
COL17A1	2.202	1.99E-53	FZD8	2.383	1.295E-14	PRRT4	2.441	3.53E-30
SLC23A3	2.200	1.07E-06	MAPT	2.379	7.237E-07	ABAT	2.437	2.34E-09
PSG8	2.191	3.13E-06	TMEM45A	2.373	5.632E-68	NDRG1	2.434	5.37E-10
LMCD1	2.187	2.50E-37	COL4A5	2.362	1.695E-76	ARTN	2.428	9.50E-10
KCND1	2.181	2.62E-17	IL7R	2.360	4.644E-08	CDK5R2	2.425	3.81E-12
PPFIBP2	2.171	9.04E-09	LINC01468	2.349	1.378E-22	EPHB6	2.422	2.26E-21
APLN	2.167	5.57E-06	TH	2.337	4.316E-06	CASC10	2.421	5.68E-27
CDC42EP5	2.160	1.07E-50	SPARC	2.335	1.778E-32	CCR10	2.418	8.24E-05
ITGBL1	2.160	1.22E-72	PRR16	2.327	3.527E-21	DMPK	2.403	4.38E-31
THBS3	2.148	2.61E-51	C2orf54	2.324	3.754E-29	COL4A1	2.399	7.67E-12
ADAMTS17	2.148	1.93E-07	SPTBN5	2.323	2.546E-11	ST3GAL1	2.398	1.88E-07
IL1RAP	2.147	5.56E-58	EHD2	2.322	1.153E-71	COL7A1	2.395	2.58E-05
NCR3LG1	2.146	6.16E-22	GUCY1A3	2.311	2.297E-15	EDA	2.394	1.99E-06
FGFR3	2.141	1.30E-38	NDRG1	2.305	1.261E-24	C19orf83	2.392	9.58E-06
PPARGC1B	2.124	7.85E-30	IFITM1	2.303	3.333E-18	BTBD19	2.391	1.04E-16
FILIP1L	2.124	2.13E-08	FZD4	2.299	1.812E-40	SAMD14	2.377	1.24E-10
TMEM63C	2.123	1.13E-24	COL5A1	2.297	2.294E-34	KALRN	2.375	3.49E-09

ARID3A induced genes	log2 FC	p value	ARID3B induced genes	log2 FC2	p value3	ARID3A/B induced genes	log2 FC3	p value2
SPTBN5	2.118	1.79E-17	PVRL1	2.292	7.128E-16	ASPHD1	2.369	1.58E-10
CALHM3	2.116	3.68E-29	PPFIBP2	2.290	7.189E-07	FGFR3	2.361	5.89E-21
LINC00662	2.115	3.12E-26	ASAP3	2.285	4.523E-29	CYP26B1	2.358	3.20E-34
APOE	2.105	3.86E-139	TNFSF15	2.282	3.172E-12	LOC101927911	2.355	4.60E-05
KALRN	2.099	5.69E-13	STAC	2.273	4.712E-26	TUBA4A	2.354	1.97E-08
LINC00346	2.096	2.67E-64	APOE	2.261	1.630E-21	ANGPT4	2.350	0.00040507
PRRT4	2.096	3.61E-71	HOTAIR	2.261	1.229E-05	SERPINF2	2.347	3.65E-06
C9orf84	2.095	1.10E-24	OAS2	2.261	3.281E-23	KLHDC7B	2.343	7.13E-07
TRHDE	2.086	8.90E-32	LYPD3	2.244	1.223E-35	DOK3	2.341	1.11E-06
SH3BGRL	2.082	3.83E-47	LINC00346	2.238	1.593E-29	SCN8A	2.326	0.000310342
LBH	2.080	1.52E-11	CD22	2.233	2.649E-07	FAM83A	2.325	2.80E-06
ZFYVE28	2.078	6.98E-10	COL4A1	2.230	2.955E-96	PARVG	2.325	0.000517755
EHD2	2.069	4.77E-33	ACTL8	2.229	9.231E-05	PRSS1	2.322	0.00025244
ZNF711	2.066	1.68E-16	CNKSR3	2.226	9.289E-25	CNTNAP1	2.308	1.17E-10
WTIP	2.065	1.75E-60	GSN-AS1	2.221	5.165E-14	EFNA2	2.308	8.73E-10
SLC16A12	2.061	4.87E-07	RAMP1	2.221	9.535E-17	DNAJC22	2.307	1.24E-21
TNS4	2.060	3.85E-09	DLL1	2.220	1.047E-27	LOC284344	2.305	0.020386634
RASSF2	2.058	5.31E-81	TUBA4A	2.211	8.574E-22	CPAMD8	2.296	4.90E-14
TIAM2	2.057	4.16E-49	NUPR1	2.194	1.166E-06	CORO6	2.293	1.17E-09
SKIDA1	2.056	4.69E-15	SLC23A3	2.187	2.715E-04	GSN	2.288	7.21E-30
ZNF365	2.051	1.46E-42	LOC101929680	2.187	1.780E-16	BTG2	2.285	1.01E-12
CD22	2.042	1.16E-07	PRCD	2.185	8.559E-05	COL4A5	2.279	1.59E-28
CPAMD8	2.036	1.79E-14	CPAMD8	2.179	4.209E-22	NNMT	2.270	6.40E-07
FLRT3	2.034	4.97E-05	THBS3	2.173	4.449E-41	KCNMA1	2.267	1.14E-05
GPR17	2.033	1.59E-05	GSN	2.171	6.781E-18	COL4A2	2.266	3.62E-08
GSN	2.032	1.10E-95	KCNK3	2.159	2.403E-07	HCN2	2.265	2.67E-11
DMPK	2.032	1.12E-52	AQP1	2.159	9.584E-09	TNFRSF21	2.251	1.11E-53
DPP4	2.031	3.96E-12	PARVG	2.158	5.175E-05	FBXO27	2.250	7.23E-10
LEPREL1	2.031	7.42E-175	DOK3	2.156	2.830E-07	LEPREL1	2.249	3.36E-47
GUCY1B2	2.030	4.56E-09	KCND1	2.150	7.458E-14	IFITM2	2.248	2.15E-09
VSIG10L	2.028	3.07E-21	SAMD14	2.134	1.409E-25	GSN-AS1	2.244	4.62E-11
LINC00052	2.027	1.01E-07	HSPA2	2.129	8.340E-05	DLL1	2.243	6.87E-08
PTCH1	2.025	4.79E-46	CD79A	2.128	1.280E-05	TGFBI	2.236	4.51E-12
FAM198B	2.025	3.99E-48	RASSF2	2.127	4.097E-23	DNM1	2.226	1.97E-12
ZG16B	2.024	2.83E-07	COL4A2-AS1	2.124	5.839E-18	HDAC5	2.224	4.91E-11
ST3GAL1	2.020	1.23E-32	COL7A1	2.121	3.312E-05	SH2B2	2.216	5.74E-18

ARID3A induced genes	log2 FC	p value	ARID3B induced genes	log2 FC2	p value3	ARID3A/B induced genes	log2 FC3	p value2
NCF2	2.006	1.00E-24	ADPRHL1	2.115	1.296E-11	ETHE1	2.212	2.51E-13
IFIT2	2.005	4.59E-45	CCR1	2.105	2.739E-04	STAC	2.212	4.95E-11
DNAJC22	2.000	1.84E-52	PDZD7	2.105	1.265E-10	SPARC	2.209	2.27E-14
DLL1	2.000	2.85E-29	SBF2-AS1	2.097	3.055E-26	C9orf3	2.199	2.92E-25
GS1-259H13.2	1.997	4.27E-09	CASC10	2.096	2.205E-21	CEL	2.196	3.17E-05
AIFM3	1.990	3.42E-08	LOC101927911	2.094	7.370E-08	PNMA2	2.193	4.75E-14
SPARC	1.990	9.38E-103	HDAC5	2.089	3.935E-20	LINC00346	2.189	2.51E-27
C9orf3	1.987	7.21E-68	ZFYVE28	2.087	9.868E-09	ATG9B	2.187	1.29E-12
SLC25A53	1.984	1.86E-08	PPP2R2C	2.082	8.097E-18	ATP1A3	2.184	4.88E-07
RCOR2	1.984	1.35E-06	EDA	2.081	7.417E-07	FLJ42969	2.180	1.34E-05
TH	1.982	2.41E-06	SLC22A20	2.079	3.761E-06	RASSF2	2.177	6.30E-32
BCAS1	1.975	1.27E-09	PRPS1	2.079	1.472E-19	ARHGEF19	2.175	3.16E-13
ATOH8	1.973	3.99E-08	ARHGAP44	2.079	6.824E-08	TIMP4	2.171	2.66E-06
ADAM22	1.973	1.65E-38	SERPINF2	2.078	4.186E-07	BEGAIN	2.168	8.80E-06
KCNMA1	1.970	1.44E-25	TRHDE-AS1	2.078	6.720E-11	LTBP4	2.167	6.81E-20
CORO6	1.968	2.03E-16	GSDMA	2.073	1.086E-04	UCN	2.164	1.85E-05
TRHDE-AS1	1.966	1.60E-19	CDC42EP5	2.071	1.516E-17	ARID3B	2.162	8.10E-09
HSD11B1	1.965	2.01E-06	RENBP	2.046	2.318E-04	ADM	2.161	1.99E-16
C2CD4C	1.964	2.54E-22	SFTA1P	2.044	3.568E-13	HSD11B1	2.159	0.00019 1586
STMN3	1.963	7.63E-32	FBXO27	2.044	1.974E-20	ENOX1	2.147	0.00424 9116
BCAN	1.962	5.18E-20	PTGER4	2.044	1.026E-27	PVRL1	2.145	7.21E-05
ARID5B	1.962	6.98E-39	KALRN	2.043	5.820E-09	PPP2R2C	2.137	2.79E-06
TBC1D30	1.961	1.20E-21	MYO7B	2.041	1.652E-04	HMOX1	2.131	1.66E-05
OAS2	1.958	4.14E-23	COL4A2	2.029	2.533E-96	PTCH1	2.128	1.74E-26
PDE1C	1.957	1.12E-64	NEBL	2.027	1.149E-06	PITPNM3	2.126	1.32E-13
PIK3AP1	1.956	1.73E-69	TIMP4	2.024	3.546E-07	LINC01315	2.123	0.00261 6831
FZD8	1.949	1.42E-10	EDN2	2.012	4.343E-20	LOC101927151	2.121	2.56E-22
CYP26B1	1.945	5.90E-68	BTBD19	2.007	9.534E-10	SPTBN5	2.120	2.72E-07
MST4	1.943	3.17E-89	SLC9A7P1	2.006	3.429E-04	ADAMTS15	2.116	2.02E-06
PSG5	1.942	1.73E-17	ARMCX4	2.004	8.240E-05	ST6GALNAC1	2.111	5.71E-05
ADPRHL1	1.936	8.74E-13	SYT7	2.003	3.863E-17	TMEM255B	2.110	4.61E-08
EFHD1	1.935	2.38E-07	FAM71D	2.001	6.576E-04	STXBP6	2.110	3.33E-13
EML6	1.931	2.24E-16	HTR1D	1.997	1.756E-08	RAMP1	2.109	1.26E-05
CDK5R2	1.929	3.60E-18	TRPC4	1.996	1.697E-08	ADPRHL1	2.106	2.24E-09
SERPINF2	1.923	1.53E-09	FGFR1	1.993	7.616E-35	GRIN1	2.105	4.00E-05
ARMCX3	1.914	9.50E-63	SEZ6L2	1.992	6.372E-54	NXPH4	2.104	1.68E-12
GSN-AS1	1.908	5.72E-15	ETHE1	1.989	1.120E-11	APLP1	2.102	5.72E-16

ARID3A induced genes	log2 FC	p value	ARID3B induced genes	log2 FC2	p value3	ARID3A/B induced genes	log2 FC3	p value2
COL4A6	1.906	1.71E-35	ITGBL1	1.984	2.224E-33	BEX5	2.089	0.00126 9072
TNFRSF21	1.905	3.34E-27	LOC100507346	1.984	7.261E-10	BCAS1	2.086	0.00020 1639
INHBA-AS1	1.902	3.59E-05	STXBP6	1.982	1.831E-21	RAP1GAP	2.084	2.51E-06
PLLP	1.901	7.91E-25	CACNA1H	1.981	1.672E-07	LOC100507346	2.082	3.91E-08
ST6GALNAC5	1.894	8.69E-57	TPM1	1.981	4.329E-62	PRPS1	2.075	7.79E-09
KCNAB3	1.893	4.83E-05	C19orf83	1.981	1.513E-09	MEF2B	2.075	1.74E-09
ANKDD1A	1.892	3.01E-18	LBH	1.981	7.375E-09	LOC102724094	2.073	0.03892 1813
SEZ6L2	1.890	3.82E-41	C2CD4C	1.977	1.908E-16	IGF1R	2.073	6.61E-32
TPM1	1.887	3.90E-111	TAGLN3	1.977	7.680E-07	GOLGA7B	2.070	0.00083 6578
LIPA	1.885	7.95E-99	RRAD	1.977	4.595E-08	LRG1	2.067	1.39E-11
HDAC5	1.885	2.95E-52	DNAJC22	1.975	2.213E-25	MSI1	2.065	5.44E-09
LIMS2	1.883	1.29E-06	LY6D	1.972	4.469E-07	DPF3	2.063	0.00825 8627
POF1B	1.883	1.05E-13	VSIG10L	1.968	1.797E-13	CCDC64	2.062	6.08E-10
SCN9A	1.876	4.76E-29	CNTNAP1	1.965	1.218E-15	ECSIT	2.061	1.48E-06
MAMDC2	1.868	9.73E-44	PLXNA2	1.965	1.184E-18	CCDC159	2.055	4.34E-05
ATF3	1.866	1.06E-35	CDK5R2	1.964	2.639E-20	FBXL16	2.052	6.99E-09
PDE1A	1.863	3.08E-05	RCOR2	1.956	4.797E-05	G0S2	2.051	4.67E-05
SH2B2	1.855	3.74E-22	DMPK	1.954	3.723E-49	CHADL	2.050	0.00900 4621
FBXO27	1.853	9.57E-59	ADAMTS2	1.948	2.870E-05	GS1-259H13.2	2.049	7.51E-06
MAPT	1.852	3.66E-05	SPTBN4	1.937	7.331E-05	PDLIM1	2.046	2.44E-15
NDUFA4L2	1.850	3.59E-06	AQP3	1.936	2.149E-18	CAMK2N2	2.043	8.64E-09
STAC	1.850	9.18E-43	DNM1	1.932	2.082E-58	HSD11B2	2.041	0.00012 3533
ETHE1	1.849	1.65E-52	ENDOD1	1.929	5.924E-37	FBN1	2.040	0.00398 1023
MIR24-1	1.844	1.09E-04	SNTB1	1.927	4.355E-05	RBAKDN	2.039	2.35E-08
SLC22A20	1.838	5.97E-07	AVIL	1.926	9.816E-09	AVIL	2.038	4.35E-07
TUBA4A	1.835	7.42E-35	ECSIT	1.923	1.581E-13	SLC25A53	2.033	0.00015 7179
RHBDL1	1.835	5.14E-06	TMEM255B	1.922	1.926E-08	C1QTNF6	2.030	1.67E-12
COL4A1	1.834	1.40E-97	OAS1	1.921	8.163E-11	SLC7A7	2.029	1.24E-06
IFIT1	1.828	7.04E-43	ESPN	1.914	2.296E-07	ARMCX6	2.023	2.40E-10
C8orf46	1.819	4.05E-17	BEGAIN	1.914	1.263E-15	CYP27B1	2.021	7.90E-06
KCNC3	1.817	8.41E-07	TGFBI	1.907	2.598E-24	CSDC2	2.001	3.49E-11
PTHLH	1.803	1.18E-08	ATP1A3	1.901	1.846E-20	IL6R	1.991	3.35E-08
IGF1R	1.801	1.04E-76	ZDHHC9	1.893	1.001E-29	TWIST1	1.988	4.09E-10
TNFSF18	1.796	3.13E-04	TNC	1.892	1.711E-48	SH3PXD2B	1.985	1.02E-08



ARID3A induced genes	log2 FC	p value	ARID3B induced genes	log2 FC2	p value3	ARID3A/B induced genes	log2 FC3	p value2
COL4A2-AS1	1.790	1.43E-14	CDHR5	1.890	2.355E-03	TAGLN3	1.985	0.00010 3474
EFEMP1	1.788	4.31E-191	ATF3	1.889	6.527E-24	LMF1	1.978	3.59E-12
FMNL2	1.788	8.57E-26	ARTN	1.885	4.997E-25	SERPINE1	1.974	1.49E-08
BTBD19	1.781	3.49E-12	TMEM2	1.883	2.146E-12	LBH	1.971	1.03E-06
SNAI2	1.779	2.75E-68	MTRNR2L9	1.882	1.005E-03	B3GNT3	1.964	3.64E-09
SPTBN4	1.778	2.47E-05	PDE1A	1.880	5.923E-04	ARMCX4	1.964	0.00307 5744
LOC100507346	1.774	9.71E-10	PLCE1	1.876	5.659E-06	ATP2A1	1.959	9.60E-05
CCDC85A	1.772	4.16E-06	EML6	1.867	8.562E-07	MAG	1.958	0.00613 6636
SAMD14	1.770	1.14E-21	CALHM1	1.859	2.843E-04	ACTA2-AS1	1.955	0.00038 6814
BTG2	1.766	3.86E-15	LINC00052	1.857	5.046E-05	DDIT4	1.954	1.16E-26
SYT1	1.760	7.28E-19	PTCH1	1.856	1.307E-20	SLC22A18	1.952	2.53E-12
LINC01315	1.756	5.89E-05	EPSTI1	1.855	4.789E-38	TMEM159	1.950	8.51E-09
TMEM64	1.756	4.93E-76	ST6GALNAC5	1.851	9.169E-32	DGCR6	1.946	3.79E-13
TGFBI	1.745	6.17E-162	PYGL	1.849	8.612E-35	C1orf226	1.946	4.57E-07
METTL7A	1.744	8.45E-38	LINC01272	1.849	5.539E-05	SLC9A7P1	1.944	0.01816 8032
PVRL1	1.743	2.09E-10	TRAF1	1.846	9.404E-13	NHSL2	1.943	7.32E-05
PPP2R2C	1.737	8.71E-17	IGF1R	1.845	2.357E-20	FARP1	1.941	7.45E-08
LHX9	1.734	2.65E-04	C8orf46	1.843	1.010E-14	PTPRH	1.940	6.40E-07
AVIL	1.731	3.55E-08	COL4A6	1.842	3.265E-32	BNIP1	1.940	0.00981 5729
OAS1	1.725	3.22E-43	ARHGEF19	1.841	2.035E-24	IFITM1	1.939	6.24E-08
MYPN	1.718	5.71E-19	DPH6-AS1	1.841	4.116E-04	HSF4	1.937	1.27E-11
ARHGEF19	1.708	2.78E-68	LOC100128531	1.839	1.088E-04	ZDHHC9	1.936	3.48E-08
BNIP1	1.707	9.28E-05	PTPRB	1.838	2.739E-14	STAB1	1.933	0.00108 1894
TBC1D4	1.706	1.28E-35	TNFRSF21	1.838	4.518E-51	SLC29A3	1.925	3.80E-19
ANTXR1	1.705	1.27E-112	SYNPO2L	1.838	6.003E-04	VAV2	1.918	1.42E-08
DOK3	1.704	4.04E-06	PIK3AP1	1.838	4.525E-38	ABI3BP	1.917	0.00593 6399
ST6GALNAC1	1.700	1.33E-05	PRRT4	1.835	1.812E-31	ANKRD2	1.911	4.69E-07
			PLLP	1.824	1.058E-07	ADAMTS10	1.903	2.88E-10
			SH3PXD2B	1.824	5.193E-51	CYP2S1	1.903	4.00E-08
			LIPA	1.822	1.217E-37	RARB	1.898	0.01291 0091
			LINC00341	1.821	1.550E-04	TNC	1.896	3.18E-17
			ELF4	1.820	3.753E-65	ENO3	1.887	6.74E-05
			TIAM2	1.818	2.586E-22	EBI3	1.887	2.22E-06

ARID3A induced genes	log2 FC	p value	ARID3B induced genes	log2 FC2	p value3	ARID3A/B induced genes	log2 FC3	p value2
			SPNS2	1.818	1.382E-29	TRPC4	1.885	0.00240 4155
			SFN	1.817	3.061E-16	PNPLA7	1.883	0.00033 5928
			AIFM3	1.816	9.545E-05	ADM5	1.882	2.02E-05
			CYP27B1	1.815	1.279E-06	SFTA1P	1.876	2.45E-05
			WTIP	1.815	2.382E-27	RNF113A	1.876	1.23E-08
			ASPHD1	1.813	5.493E-21	SKIDA1	1.874	8.80E-06
			C1QTNF6	1.812	1.164E-30	GCHFR	1.860	7.79E-07
			PTHLH	1.811	1.501E-06	RNF139-AS1	1.860	0.01080 1165
			JAG1	1.810	2.609E-37	SOX12	1.857	5.66E-09
			LMF1	1.810	4.159E-16	ELF4	1.853	6.84E-06
			GS1-259H13.2	1.809	2.053E-04	NRARP	1.849	1.20E-05
			CYFIP1	1.805	2.113E-18	CYFIP1	1.844	2.47E-08
			PITPNM3	1.802	1.026E-22	PPP1R26-AS1	1.843	4.34E-08
			DUSP5	1.799	5.678E-11	NGF	1.843	0.03913 7171
			RASSF4	1.799	2.197E-17	GSDMA	1.840	0.02960 6583
			LTBP2	1.795	2.285E-14	SFN	1.839	3.02E-05
			ITPRIPL1	1.792	2.775E-13	LRP1	1.836	2.34E-14
			ACTA2-AS1	1.790	9.696E-05	TMEM253	1.830	0.02810 4575
			C9orf3	1.789	1.733E-17	SNORD86	1.829	9.59E-05
			ABI3BP	1.784	3.155E-04	MIR3074	1.820	0.01737 5964
			CCR10	1.775	3.213E-04	METTL7B	1.820	0.00016 621
			HSD11B2	1.765	6.776E-06	TPM1	1.819	2.11E-19
			KCNC3	1.757	1.385E-04	COL4A6	1.817	4.29E-10
			MYD88	1.753	1.148E-13	METTL7A	1.815	1.83E-10
			MIR4709	1.752	2.117E-03	LRRC26	1.814	0.00048 3156
			EBI3	1.751	5.364E-20	SEMA7A	1.813	4.01E-06
			ZNF488	1.751	3.568E-13	SLC12A8	1.805	5.92E-07
			DIRAS1	1.749	2.942E-10	AHNAK2	1.803	2.66E-14
			TRHDE	1.749	1.417E-06	LOXL1	1.803	5.02E-06
			BEX5	1.748	1.922E-03	ITGB5	1.802	3.80E-06
			SNAI2	1.747	3.800E-36	IQCH-AS1	1.802	0.00214 0359
			TAS1R3	1.742	1.034E-06	LYPD1	1.802	3.92E-08
			SLC12A8	1.738	4.678E-20	EFHD1	1.799	0.00544 1587

ARID3A induced genes	log2 FC	p value	ARID3B induced genes	log2 FC2	p value3	ARID3A/B induced genes	log2 FC3	p value2
			ACVR2B-AS1	1.734	3.285E-04	SSC5D	1.797	0.000578189
			CCDC64	1.733	2.855E-35	FAM110D	1.795	6.79E-06
			SLAIN1	1.728	1.867E-04	TM4SF19	1.791	0.012297142
			SERPINE1	1.728	5.438E-36	PKD1L2	1.789	0.000723345
			ASIC3	1.727	5.340E-06	LOC102723703	1.786	0.001389492
			GRAMD2	1.725	3.863E-06	IGSF1	1.786	3.67E-06
			APLP1	1.721	1.397E-27	RYR2	1.783	0.081712464
			MAMDC2	1.721	7.870E-16	TRHDE-AS1	1.783	1.25E-05
			CYP2S1	1.720	7.774E-24	LINC01123	1.781	6.93E-07
			BNIP1	1.717	4.095E-04	TMEM198	1.778	1.84E-08
			VAV2	1.716	1.420E-46	NPM2	1.776	1.32E-05
			CEL	1.715	7.378E-05	C10orf11	1.776	9.20E-08
			DOCK2	1.711	3.371E-06	ACVR2B-AS1	1.774	0.003545902
			IL6R	1.704	7.098E-09	MIR3615	1.774	0.006410784
			F12	1.703	3.151E-08	ACTA2	1.773	5.26E-06
			SHISA9	1.703	7.226E-38	METRNL	1.773	1.34E-09
						TMEM190	1.770	0.00868946
						CYP1A1	1.767	0.000333413
						TMEM45A	1.761	0.001012484
						LOC284837	1.761	0.01050783
						LINC00662	1.759	8.47E-06
						TUBB3	1.758	1.99E-05
						MANEAL	1.756	1.55E-05
						TBC1D30	1.755	9.03E-09
						LOC100128531	1.752	0.004519439
						QTRT1	1.752	2.38E-05
						SPR	1.749	7.14E-06
						SDSL	1.748	6.79E-07
						SNORA65	1.748	0.007575303
						LTBP3	1.744	1.31E-06
						ITGBL1	1.737	4.58E-07
						CPT1B	1.737	3.95E-07

ARID3A induced genes	log2 FC	p value	ARID3B induced genes	log2 FC2	p value3	ARID3A/B induced genes	log2 FC3	p value2
						PCBP3	1.736	1.11E-05
						F12	1.736	0.00038732
						KRT13	1.732	0.00217359
						GFAP	1.731	0.000186248
						FZD4	1.729	0.004625213
						DIRAS1	1.729	3.03E-06
						GLA	1.726	1.27E-05
						MYD88	1.725	6.11E-07
						NDUFA4L2	1.721	0.010881735
						SPNS2	1.717	2.19E-05
						KREMEN2	1.716	5.26E-06
						SH2D3C	1.715	0.008907916
						NXP3	1.710	0.000609435
						LOC101928525	1.709	0.000208399
						DOCK2	1.706	9.41E-06
						RTN2	1.704	2.87E-08
						ANO2	1.703	2.34E-05
						PLXNA2	1.702	0.000659444
						KIRREL3	1.701	7.84E-05
						PLL	1.701	1.08E-07
						SLC25A5-AS1	1.700	6.78E-06

Author Manuscript

Author Manuscript

Author Manuscript

Author Manuscript

**Table 2:**

## Uniquely induced genes

ARID3A only	ARID3B only	ARID3A/B only
TENM1	SCN2B	SAG
SNAP25	NGFR	TMIGD2
NMCN1	CDH16	CHGA
CD180	CSF2RB	FOXS1
LINC00482	GDNF-AS1	CALY
PSG8	SBK2	LINC00885
SLC16A12	TRIM29	LHB
FLRT3	GGT5	ACOX2
ARID5B	CDSN	NAT16
INHBA-AS1	SBSN	P2RX2
MIR24-1	ACTL8	CHADL
TNFSF18	PRCD	IQCH-AS1
CCDC85A	KCNK3	TM4SF19
	AQP1	MIR3615
	CD79A	CYP1A1
	CCR1	LOC284837
	MYO7B	SNORA65
	RRAD	
	ADAMTS2	
	ESPN	
	CDHR5	
	LINC01272	
	SYNPO2L	
	RASSF4	

**Table 3:**

Genes selected for validation:

Gene	Fold induction by ARID3A	Fold induction by ARID3B	Fold induction by ARID3A/B	Identified by ChIP-CHIP
TIMP3	272	453	511	Yes
GLI2	115	186	380	No
MMP2	70	74	132	No
NES	32	59	42	Yes
WNT5B	21	35	32	Yes
MYCN	9.6	16.5	10.3	No
SNAI2	3.4	3.4	2.44	No
TWIST	2.6	2.5	4	No
TP53	1.7	1.8	2.4	No
MYC	1.39	1.6	2.2	Yes
ARID3A	101	61	105	No
ARID3B	2.2	8.8	4.5	No

**Table 4:**

## IPA Pathways

<b>Top ARID3A/B IPA iduced pathways</b>
Axonal Guidance Signaling
Molecular Mechanisms of Cancer
EIF2 Signaling
Wnt/ $\beta$ -catenin Signaling
Sirtuin Signaling Pathway
Basal Cell Carcinoma Signaling
Cell Cycle: G1/S Checkpoint Regulation
Human Embryonic Stem Cell Pluripotency
Ephrin B Signaling
Integrin Signaling

Author Manuscript

Author Manuscript

Author Manuscript

Author Manuscript



**Table 5:**

ARID3A/B represses TNF/TRAIL pathways

Gene	Fold decrease by ARID3A	Fold decrease by ARID3B	Fold decrease by ARID3A/B
TNFSF10 (TRAIL)	2.193	4.739	4.167
TNFRSF1b (TNFR2)	5.236	3.030	5.556
TNFRSF11b	8.065	12.987	27.778
TNFAIP2	5.556	5.000	4.545
TNFAIP3	1.471	1.266	1.832

Author Manuscript

Author Manuscript

Author Manuscript

Author Manuscript

**Table 6:**

## QRT-PCR Primer Information

NCBI Gene Symbol	IDT Assay ID	Transcript	Location
ARID3A	Hs.PT.58.21479602	NM_005224	exon 4-5
ARID3B	Hs.PT.58.40614873	NM_006465	exon 7-9
GAPDH	Hs.PT.39a.22214836	NM_002046(1)	exon 2-3
GLI2	Hs.PT.58.3039554	NM_005270(1)	exon 10-11
MMP2	Hs.PT.58.39114006	NM_001127891(2)	exon 6-7
MYC	Hs.PT.58.26770695	NM_002467	exon 2-3
MYCN	Hs.PT.58.23025106	NM_005378(1)	exon 2-3
NES	Hs.PT.58.40894423	NM_006617	exon 1-2
RIPK1	Hs.PT.58.15545621	NM_003804	exon 7-8
SNAI2	Hs.PT.58.1772559	NM_003068	exon 2-3
TIMP3	Hs.PT.58.1756331	NM_000362	exon 1-3
TNF	Hs.PT.58.45380900	NM_000594(1)	exon 1b - 4a
TNFRSF1B	Hs.PT.58.40638488	NM_001066	exon 2-3
TNFSF10	Hs.PT.58.20372853	NM_001190943(1)	exon 1b - 2
TP53	Hs.PT.58.39676686	NM_001126113	exon 1-2
TWIST1	Hs.PT.58.18940950	NM_000474	exon 1-2
WNT5B	Hs.PT.58.40348451	NM_030775	exon 4-5